

Feedback Specifications

Encoder Specifications

Mechanical

Electrical

Accuracy	±2 min of arc
Input power	5 VDC ±5%, 135 mA
Operating frequency	100 kHz max
Output device	26LS31
Sink/Source, nominal	20 mA
Suggested user interface	26LS32

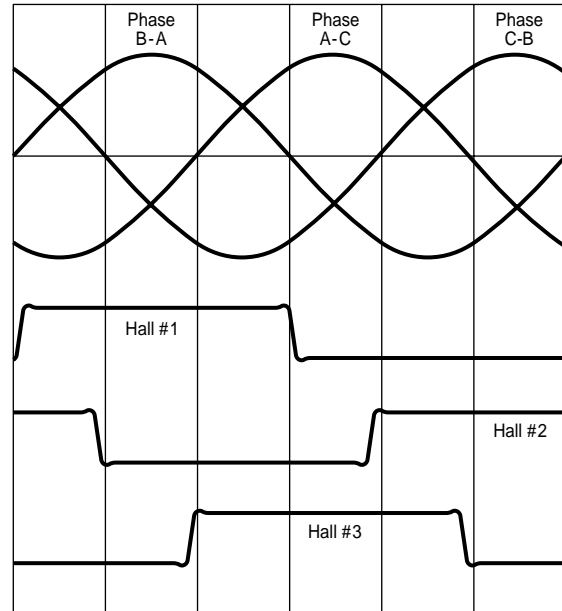
Hall-Effect Specifications

Electrical

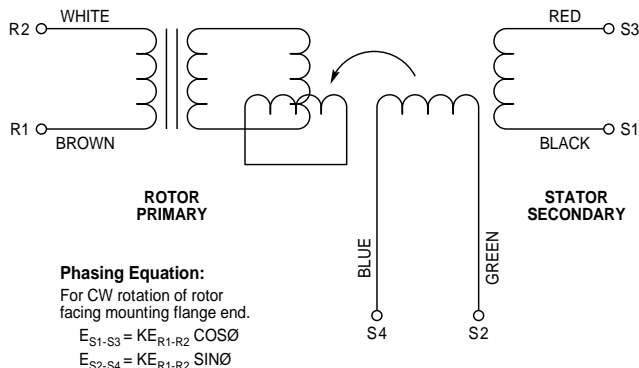
Input power	5 VDC ±5%, 80 mA
Output device (open collector)	LM339
Maximum pull up Sink	12 VDC 16 mA

Commutation Chart

Clockwise rotation as viewed from front shaft.



Resolver Schematic Diagram



Resolver Specifications

Parameter	Value
Input voltage @ 7 kHz	4.25 volts
Input current, max	55 mA
Input power, nominal	0.12 watts
Impedance Z _{SO} (@ 90°)	58+j145 ohms
Impedance Z _{RO}	53+j72 ohms
Impedance Z _{RS}	42+j55 ohms
Transformation ratio	0.470 ±5%
Output voltage	2.0 ±5% volts
DC rotor resistance	23 ±10% ohms
DC stator resistance	19 ±10% ohms
Sensitivity	35 mV/degree
Max error from EZ	±10 minutes
Phase shift, open circuit	5° leading, ±3"
Null voltage, total	20 mV rms
Impedance Z _{SS}	50+j128 ohms
Inertia	Incl. with motor spec.

Custom Designed Servo Motors For Your Specific Application. Call 1-800-358-9070 Today.