

MOTOR DATA @ 230 VAC (TRAP)

MOTOR PARAMETERS	UNITS	VALUE
HORSEPOWER	HP	1.96
KILOWATTS	KW	1.46
MAX. OPERATING SPEED	N. MAX RPM	4100
SPEED @ RATED TORQUE	N RATED RPM	3600
* CONTINUOUS RATED TORQUE @ 3600 RPM	IN-LBS[Nm]	34.4[3.8]
* CONTINUOUS STALL TORQUE	IN-LBS[Nm]	39.0[4.4]
CONTINUOUS LINE CURRENT	AMPS	6.3
PEAK TORQUE	IN-LBS[Nm]	137.0[15.5]
PEAK CURRENT	AMPS	23.1
MAX. THEORETICAL ACCEL.	RAD/SEC ²	100,000
TORQUE SENSITIVITY	K[IN-LBS/AMP][Nm/AMP]	6.2[0.7]
BACK EMF (LINE TO LINE)	Vrms/Krpm	55.0
D.C. RESISTANCE (P-P)	OHMS	1.9
INDUCTANCE (P-P)	MILLIHENRIES	7.5
ROTOR INERTIA	Jm IN-LBS-SEC ² [Kg-M ²]	.00137[.000154]
STATIC FRICTION	Tf IN-LBS[Nm]	0.6[0.07]

*25°C AMBIENT WITH A MAXIMUM CASE TEMPERATURE OF 100°C ON MOTOR. MOTOR MOUNTED ON A 10" X 10" X 10" X 1/4" ALUMINUM HEATSINK. THERMOSTAT IN STATOR WINDINGS WILL OPEN IF WINDING TEMPERATURE EXCEEDS 155°C. THIS ALLOWS FOR AN APPROXIMATE +10% HEADROOM IN THE CONTINUOUS TORQUE RATING BEFORE THERMOSTAT OPENS.

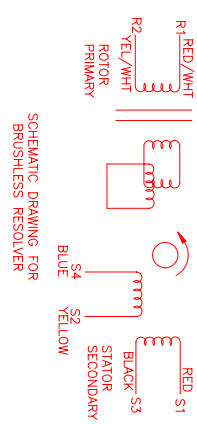
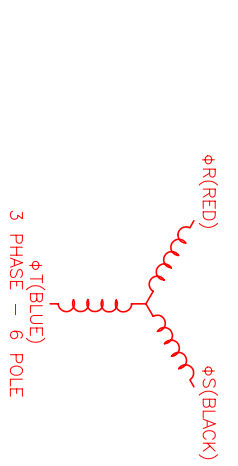
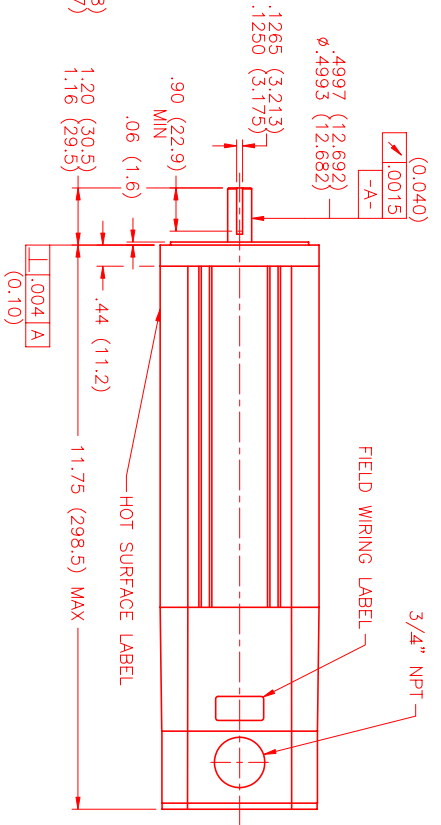
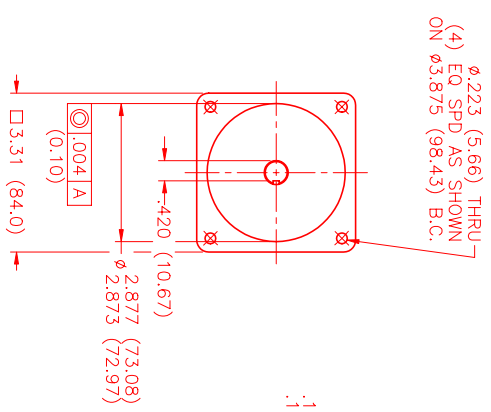
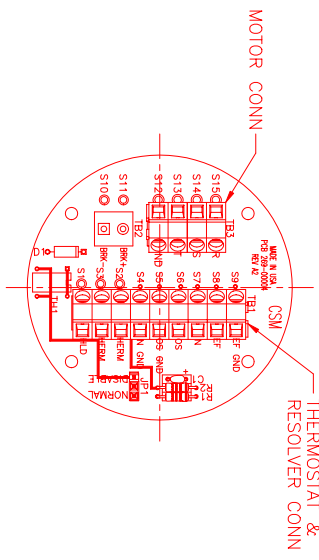
MECHANICAL NOTES:

1. AXIAL LOAD: 25 LBS MAX
2. RADIAL LOAD: 40 LBS MAX @ 1" FROM FACE
3. MOTOR SEALED TO IP65.
4. MOTOR WEIGHT: 13 LBS. [5.9 Kg]
5. MOTOR FINISH: BLACK EPOXY
6. MOTOR OUTPUT SHAFT: STAINLESS STEEL
7. INCHES (MILLIMETERS)

CONNECTION CHART

MOTOR WIRE LEADS	RES/THERM WIRE LEADS
TERMINAL FUNCTION	WIRE COLOR
S15	RED
S14	BLACK
S13	BLUE
S12	GRN/YEL

TERMINAL FUNCTION	WIRE COLOR
S9	YEL/WHI
S8	RED/WHI
S7	YELLOW
S6	RED
S5	BLACK
S4	BLUE
S3	BLACK
S2	BLACK
S1	GRN/YEL



NO. 1	PART NUMBER	DESCRIPTION	QTY.
UNLESS SPECIFIED			
DECIMAL ANGLES	30°		
DECIMAL ANGLES	1/2°		
DECIMAL ANGLES	1/4°		
DECIMAL ANGLES	1/8°		
DATE:	7/22/99	TITLE:	"A"/TRAP/230/ENG/RES/NPT
DRAWN:	MVS	CHECKED:	
APPROVED:		MATERIAL:	
SCALE:	1/2:1		

REV.	DESCRIPTION	DATE	APP.
PRELIMINARY		9/15/00	LIN

DATE: * /TRAP/230/ENG/RES/NPT DRAWING NUMBER: MPM893ATG6G3N

MTS Systems Corporation
Automation Division