

MOTOR DATA @ 85 VDC (TRAP)

MOTOR PARAMETERS	UNITS	VALUE
HORSEPOWER	HP	0.19
KILOWATTS	KW	0.14
MAX. OPERATING SPEED	N MAX RPM	750
SPEED @ RATED TORQUE	N RATED RPM	400
* CONTINUOUS RATED TORQUE @ 400 RPM	IN-LBS[INm]	29.0 [3.30]
* CONTINUOUS STALL TORQUE	IN-LBS[INm]	30.0 [3.39]
CONTINUOUS LINE CURRENT	AMPS	3.7
PEAK TORQUE	IN-LBS[INm]	75.0 [8.50]
PEAK CURRENT	AMPS	9.1
MAX. THEORETICAL ACCEL.	RAD/SEC ²	65,732
TORQUE SENSITIVITY	K[IN-LBS/AMP][Nm/AMP]	8.2 [0.93]
BACK EMF (LINE TO LINE)	Vrms/Krpm	73
D.C. RESISTANCE (P-P)	OHMS	6.0
INDUCTANCE (P-P)	MILLIHENRIES	20.2
ROTOR INERTIA W./BRAKE	Jm [IN-LBS-SEC ²][Kg-M ²]	.00114 [1.0001285]
STATIC FRICTION	Tf [IN-LBS][Nm]	0.5 [0.06]

*25°C AMBIENT WITH A MAXIMUM CASE TEMPERATURE OF 100°C ON MOTOR. MOTOR MOUNTED ON A 10" X 10" X 1/4" ALUMINUM HEATSINK. THERMOSTAT IN STATOR WINDINGS WILL OPEN IF WINDING TEMPERATURE EXCEEDS 155°C. THIS ALLOWS FOR AN APPROXIMATE +10% HEADROOM IN THE CONTINUOUS TORQUE RATING BEFORE THERMOSTAT OPENS.

MECHANICAL NOTES:

- AXIAL LOAD: 25 LBS MAX
- RADIAL LOAD: 40 LBS MAX @ 1" FROM FACE
- MOTOR SEALED TO IP65.
- MOTOR WEIGHT: 11.5 LBS. [5.2 Kg]
- MOTOR FINISH: BLACK EPOXY
- MOTOR OUTPUT SHAFT: STAINLESS STEEL
- INCHES (MILLIMETERS)

ENCODER: (290-00052)

OH48-2000P6-L6-5V

FAILSAFE BRAKE:

MIN HOLDING TORQUE: 60 IN-LBS
INPUT VOLTAGE: 24 VOLTS

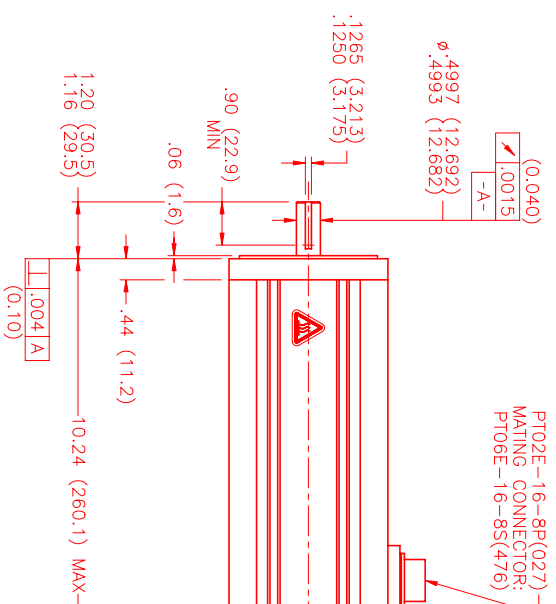
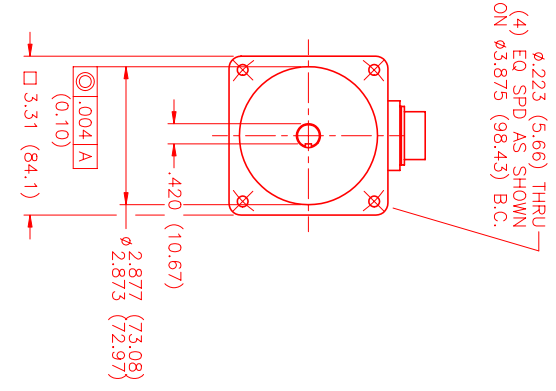
CONNECTION CHART

MOTOR CONNECTOR:
PT02E-16-8P(027)
(270-00032)

ENCODER/THERM CONNECTOR:
PT02E-14-18P(027)
(270-00024)

MOTOR/BRAKE WIRE LEADS	PIN	WIRE FUNCTION	WIRE COLOR
A	φR	RED	RED
B	φS	BLACK	RED
C	φT	BLUE	BLUE
D	PE GND	GRN/YEL	BLUE/BLK
E	BRK SHLD	-	GREEN
F	BRK (+)	DIODE	GRN/BLK
G	BRK (-)	1N4007	YELLOW
H	-	-	YEL/BLK

ENC/THERM WIRE LEADS	PIN	WIRE FUNCTION	WIRE COLOR
T	GROUND	BLACK	BLACK
K	+5VDC	RED	RED
B	CH A	BLUE	BLUE
C	CH A\	BLUE/BLK	BLUE/BLK
N	CH B	GREEN	GREEN
P	CH B\	GRN/BLK	GRN/BLK
M	CH Z	YELLOW	YELLOW
U	CH Z\	YEL/BLK	YEL/BLK
E	CH U	BROWN	BROWN
R	CH U\	BRN/BLK	BRN/BLK
F	CH V	GRAY	GRAY
S	CH V\	GRAY/BLK	GRAY/BLK
G	CH W	WHITE	WHITE
H	CH W\	WHT/BLK	WHT/BLK
D	GND/CABLE	SHLD	SHLD
A	THERM	BLACK	BLACK
L	THERM	BLACK	BLACK
J	GND	GRN/YEL	GRN/YEL

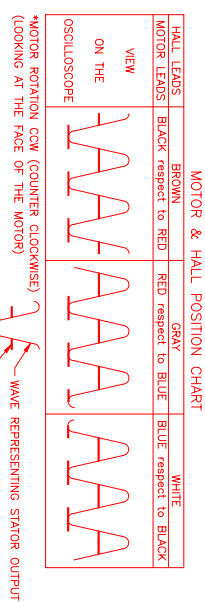


PT02E-16-8P(027)
MATING CONNECTOR:
PT06E-16-8S(476)

PT02E-14-18P(027)
MATING CONNECTOR:
PT06E-14-18S(476)

φR(RED) φS(BLACK)

φT(BLUE)
3 PHASE - 6 POLE



MOTOR & HALL POSITION CHART

HALL LEADS	BROWN	GRAY	WHITE
MOTOR LEADS	BLACK respect to RED	RED respect to BLUE	BLUE respect to BLACK

NO.	PART NUMBER	DESCRIPTION	QTY.
1	MPM892BTM6JN1R	MOTOR	1

REV.	DESCRIPTION	DATE	APP.
PRELIMINARY		10/30/00	AJS

UNLESS SPECIFIED	DESCRIPTION
DRILL: .004 A	DRILL: .004 A
FINISH: .0005 A	FINISH: .0005 A
ANGLE: 1/2°	ANGLE: 1/2°

DATE	BY	CHECKED	APPROVED
10/30/00	AJS		

NO.	PART NUMBER	DESCRIPTION	QTY.
1	MPM892BTM6JN1R	MOTOR	1

NO.	PART NUMBER	DESCRIPTION	QTY.
1	MPM892BTM6JN1R	MOTOR	1

NO.	PART NUMBER	DESCRIPTION	QTY.
1	MPM892BTM6JN1R	MOTOR	1

NO.	PART NUMBER	DESCRIPTION	QTY.
1	MPM892BTM6JN1R	MOTOR	1

NO.	PART NUMBER	DESCRIPTION	QTY.
1	MPM892BTM6JN1R	MOTOR	1

NO.	PART NUMBER	DESCRIPTION	QTY.
1	MPM892BTM6JN1R	MOTOR	1

NO.	PART NUMBER	DESCRIPTION	QTY.
1	MPM892BTM6JN1R	MOTOR	1

NO.	PART NUMBER	DESCRIPTION	QTY.
1	MPM892BTM6JN1R	MOTOR	1

NO.	PART NUMBER	DESCRIPTION	QTY.
1	MPM892BTM6JN1R	MOTOR	1

NO.	PART NUMBER	DESCRIPTION	QTY.
1	MPM892BTM6JN1R	MOTOR	1

NO.	PART NUMBER	DESCRIPTION	QTY.
1	MPM892BTM6JN1R	MOTOR	1

NO.	PART NUMBER	DESCRIPTION	QTY.
1	MPM892BTM6JN1R	MOTOR	1

NO.	PART NUMBER	DESCRIPTION	QTY.
1	MPM892BTM6JN1R	MOTOR	1

NO.	PART NUMBER	DESCRIPTION	QTY.
1	MPM892BTM6JN1R	MOTOR	1

NO.	PART NUMBER	DESCRIPTION	QTY.
1	MPM892BTM6JN1R	MOTOR	1

NO.	PART NUMBER	DESCRIPTION	QTY.
1	MPM892BTM6JN1R	MOTOR	1

NO.	PART NUMBER	DESCRIPTION	QTY.
1	MPM892BTM6JN1R	MOTOR	1

NO.	PART NUMBER	DESCRIPTION	QTY.
1	MPM892BTM6JN1R	MOTOR	1

NO.	PART NUMBER	DESCRIPTION	QTY.
1	MPM892BTM6JN1R	MOTOR	1

NO.	PART NUMBER	DESCRIPTION	QTY.
1	MPM892BTM6JN1R	MOTOR	1

NO.	PART NUMBER	DESCRIPTION	QTY.
1	MPM892BTM6JN1R	MOTOR	1

NO.	PART NUMBER	DESCRIPTION	QTY.
1	MPM892BTM6JN1R	MOTOR	1

NO.	PART NUMBER	DESCRIPTION	QTY.
1	MPM892BTM6JN1R	MOTOR	1

NO.	PART NUMBER	DESCRIPTION	QTY.
1	MPM892BTM6JN1R	MOTOR	1

NO.	PART NUMBER	DESCRIPTION	QTY.
1	MPM892BTM6JN1R	MOTOR	1

NO.	PART NUMBER	DESCRIPTION	QTY.
1	MPM892BTM6JN1R	MOTOR	1

NO.	PART NUMBER	DESCRIPTION	QTY.
1	MPM892BTM6JN1R	MOTOR	1

NO.	PART NUMBER	DESCRIPTION	QTY.
1	MPM892BTM6JN1R	MOTOR	1

NO.	PART NUMBER	DESCRIPTION	QTY.
1	MPM892BTM6JN1R	MOTOR	1

NO.	PART NUMBER	DESCRIPTION	QTY.
1	MPM892BTM6JN1R	MOTOR	1

NO.	PART NUMBER	DESCRIPTION	QTY.
1	MPM892BTM6JN1R	MOTOR	1

NO.	PART NUMBER	DESCRIPTION	QTY.
1	MPM892BTM6JN1R	MOTOR	1

NO.	PART NUMBER	DESCRIPTION	QTY.
1	MPM892BTM6JN1R	MOTOR	1

NO.	PART NUMBER	DESCRIPTION	QTY.
1	MPM892BTM6JN1R	MOTOR	1

NO.	PART NUMBER	DESCRIPTION	QTY.
1	MPM892BTM6JN1R	MOTOR	1

NO.	PART NUMBER	DESCRIPTION	QTY.
1	MPM892BTM6JN1R	MOTOR	1

NO.	PART NUMBER	DESCRIPTION	QTY.
1	MPM892BTM6JN1R	MOTOR	1

NO.	PART NUMBER	DESCRIPTION	QTY.
1	MPM892BTM6JN1R	MOTOR	1

NO.	PART NUMBER	DESCRIPTION	QTY.
1	MPM892BTM6JN1R	MOTOR	1

NO.	PART NUMBER	DESCRIPTION	QTY.
1	MPM892BTM6JN1R	MOTOR	1

NO.	PART NUMBER	DESCRIPTION	QTY.
1	MPM892BTM6JN1R	MOTOR	1

NO.	PART NUMBER	DESCRIPTION	QTY.
1	MPM892BTM6JN1R	MOTOR	1

NO.	PART NUMBER	DESCRIPTION	QTY.
1	MPM892BTM6JN1R	MOTOR	1

NO.	PART NUMBER	DESCRIPTION	QTY.
1	MPM892BTM6JN1R	MOTOR	1

NO.	PART NUMBER	DESCRIPTION	QTY.
1	MPM892BTM6JN1R	MOTOR	1

NO.	PART NUMBER	DESCRIPTION	QTY.
1	MPM892BTM6JN1R	MOTOR	1

NO.	PART NUMBER	DESCRIPTION	QTY.
1	MPM892BTM6JN1R	MOTOR	1

NO.	PART NUMBER	DESCRIPTION	QTY.
1	MPM892BTM6JN1R	MOTOR	1

NO.	PART NUMBER	DESCRIPTION	QTY.
1	MPM892BTM6JN1R	MOTOR	1

NO.	PART NUMBER	DESCRIPTION	QTY.
1	MPM892BTM6JN1R	MOTOR	1

NO.	PART NUMBER	DESCRIPTION	QTY.
1	MPM892BTM6JN1R	MOTOR	1

NO.	PART NUMBER	DESCRIPTION	QTY.
1	MPM892BTM6JN1R	MOTOR	1

NO.	PART NUMBER	DESCRIPTION	QTY.
1	MPM892BTM6JN1R	MOTOR	1

NO.	PART NUMBER	DESCRIPTION	QTY.
1	MPM892BTM6JN1R	MOTOR	1

NO.	PART NUMBER	DESCRIPTION	QTY.
1	MPM892BTM6JN1R	MOTOR	1

NO.	PART NUMBER	DESCRIPTION	QTY.
1	MPM892BTM6JN1R	MOTOR	1

NO.	PART NUMBER	DESCRIPTION	QTY.
1	MPM892BTM6JN1R	MOTOR	1

NO.	PART NUMBER	DESCRIPTION	QTY.
1	MPM892BTM6JN1R	MOTOR	1

NO.	PART NUMBER	DESCRIPTION	QTY.
1	MPM892BTM6JN1R	MOTOR	1

NO.	PART NUMBER	
-----	-------------	--