

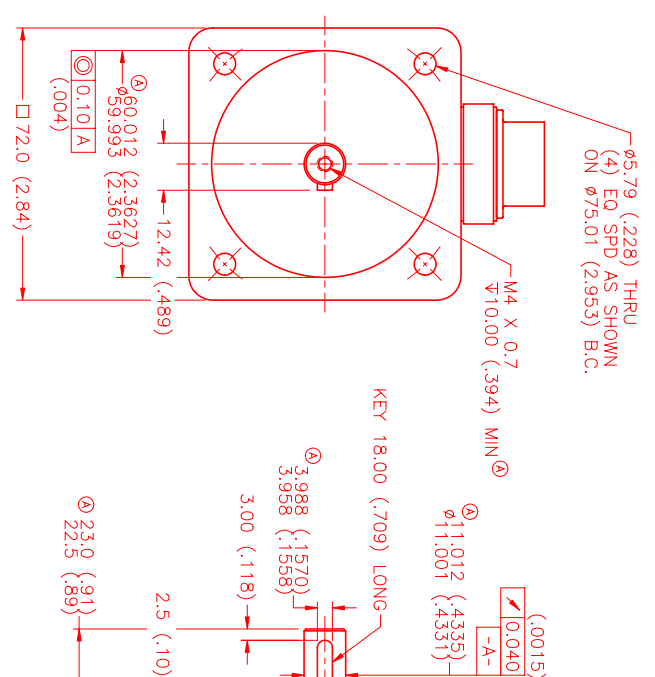
② MOTOR DATA @ 230 VAC (SINE)

MOTOR PARAMETERS	UNITS	VALUE
HORSEPOWER	Hp	0.79
KILOWATTS	KW RATED	0.58
MAX. OPERATING SPEED	N. MAX RPM	4000
SPEED @ RATED TORQUE	N RATED RPM	3000
* CONTINUOUS RATED TORQUE @ 3500 RPM	IN-LBS[Nm]	16.6[1.88]
* CONTINUOUS STALL TORQUE	IN-LBS[Nm]	18.8[2.12]
CONTINUOUS LINE CURRENT	AMPS(RMS/Φ)	2.3
PEAK TORQUE	IN-LBS[Nm]	56.0[6.4]
PEAK CURRENT	AMPS(RMS/Φ)	6.9
MAX. THEORETICAL ACCEL.	RAD/SEC ²	114,286
TORQUE SENSITIVITY	Kt IN-LBS/AMPER(S/Φ) [Nm/AMPER(S/Φ)]	8.2[0.93]
BACK EMF (LINE TO LINE)	±10% Vrms/Krpm	51.8
D.C. RESISTANCE (P-P)	±10% OHMS	5.5
INDUCTANCE (P-P)	±10% MILLIHENRIES	13.0
ROTOR INERTIA	Jm [IN-LBS-SEC ²] [Kg-M ²]	0.00049[0.000055]
STATIC FRICTION	Tf [IN-LBS] [Nm]	1.2[0.14]

*25°C AMBIENT WITH A MAXIMUM CASE TEMPERATURE OF 85°C ON MOTOR. MOTOR MOUNTED ON A 1/2" X 1/2" X 1/2" ALUMINUM HEATSINK. THERMOSTAT IN STATOR WINDINGS WILL OPEN IF WINDING TEMPERATURE EXCEEDS 155°C. THIS ALLOWS FOR AN APPROXIMATE +10% HEADROOM IN THE CONTINUOUS TORQUE RATING BEFORE THERMOSTAT OPENS.

MECHANICAL NOTES:

- AXIAL LOAD: 20 LBS. MAX
- RADIAL LOAD: 35 LBS. MAX @ 1" FROM FACE
- MOTOR SEALED TO IP65.
- MOTOR WEIGHT: 6.1 LBS. [2.8 Kg]
- MOTOR FINISH: BLACK EPOXY
- MOTOR OUTPUT SHAFT: STAINLESS STEEL
- MILLIMETERS (INCHES)
- THIS MOTOR'S OUTPUT KEY IS A PRESS FIT.

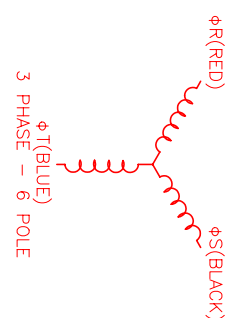
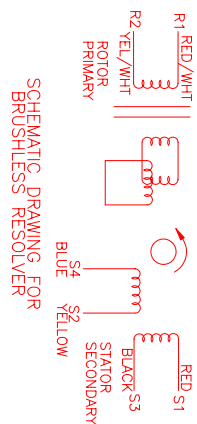
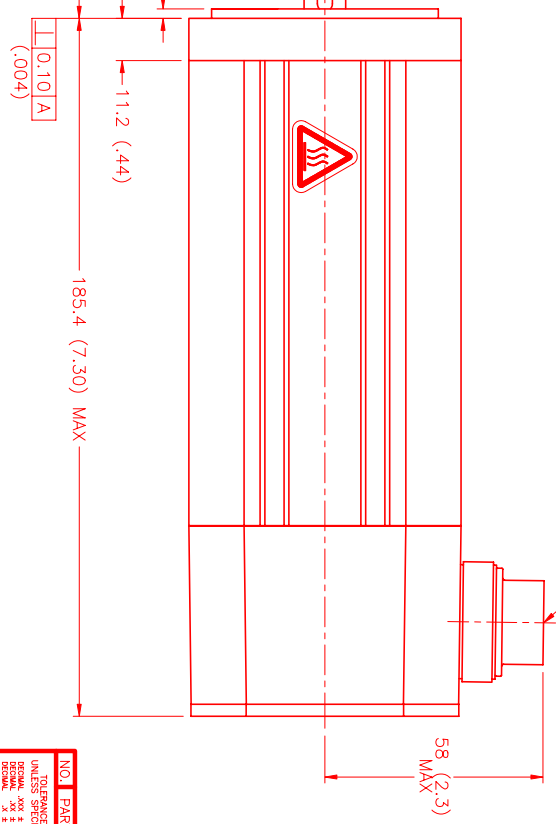


CONNECTION CHART

MOTOR/THERM/RESOLVER CONNECTOR:
PT02E-14-18P (027)
(270-00024)

MTR./RES./THERM WIRE LEADS	WIRE FUNCTION	WIRE COLOR
A	ΦR	RED
B	ΦS	BLACK
C	ΦT	BLUE
D	PE GND	GRN/YEL
U	THERM	BLACK
N	THERM	BLACK
H	SIN	YELLOW
G	COS GND	BLACK
S	COS	RED
F	SIN GND	BLUE
R	REF GND	YEL/WHI
E	REF	RED/WHI
J	RES SHLD	GRN/YEL
K	-	-
L	-	-
M	-	-
P	-	-
T	-	-

PT02E-14-18P (027)
MATING CONNECTOR:
PT06E-14-18S (476)



REV.	DESCRIPTION	DATE	APP.
A	PRELIMINARY	12/10/98	LIN
A	E.C.O. - 558	2/2/00	AJS

NO.	PART NUMBER	DESCRIPTION	QTY.
1	MPM724CSG7G1N	230VAC/MET/RES/CONN	1

DATE	BY	CHKD	APPD.
12/10/98	LIN	LIN	LIN

UNLESS SPECIFIED OTHERWISE, ALL DIMENSIONS ARE IN INCHES AND DECIMAL FRACTIONS ARE TO THE NEAREST THOUSANDTH UNLESS OTHERWISE SPECIFIED. DIMENSIONS IN PARENTHESES ARE METRIC EQUIVALENTS. THIS DRAWING IS THE PROPERTY OF MTS. IT IS TO BE USED ONLY FOR THE PROJECT AND QUANTITY SPECIFIED. IT IS TO BE RETURNED TO MTS UPON COMPLETION OF THE PROJECT. NO PARTS ARE TO BE REPRODUCED OR COPIED WITHOUT THE WRITTEN PERMISSION OF MTS. THIS DRAWING IS THE PROPERTY OF MTS. IT IS TO BE USED ONLY FOR THE PROJECT AND QUANTITY SPECIFIED. IT IS TO BE RETURNED TO MTS UPON COMPLETION OF THE PROJECT. NO PARTS ARE TO BE REPRODUCED OR COPIED WITHOUT THE WRITTEN PERMISSION OF MTS.