

# MOTOR DATA @ 110 VAC (TRAP)

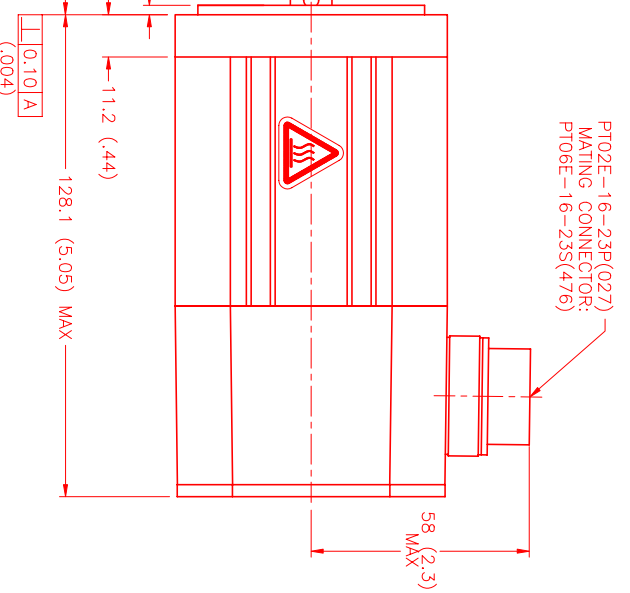
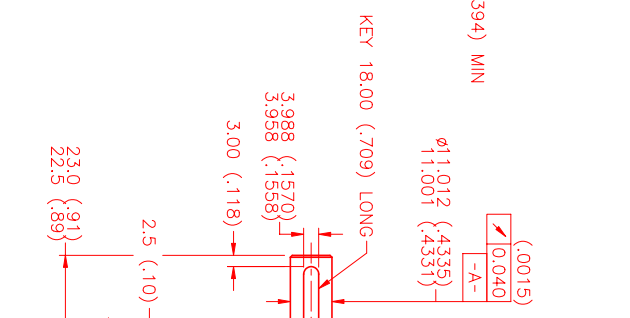
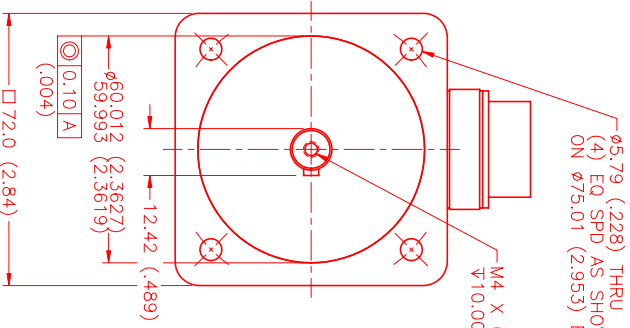
MOTOR PARAMETERS	UNITS	VALUE
HORSEPOWER	HP	.16
KILOWATTS	KW RATED	.12
MAX. OPERATING SPEED	N. MAX RPM	2300
SPEED @ RATED TORQUE	N RATED RPM	1900
* CONTINUOUS RATED TORQUE @ 100 RPM	IN-LBS[ Nm ]	5.4[0.61]
* CONTINUOUS STALL TORQUE	IN-LBS[ Nm ]	5.8[0.66]
CONTINUOUS LINE CURRENT	AMPS	2.0
PEAK TORQUE	IN-LBS[ Nm ]	17.0[1.92]
PEAK CURRENT	AMPS	6.0
MAX. THEORETICAL ACCEL.	RAD/SEC <sup>2</sup>	113,333
TORQUE SENSITIVITY	Kt [IN-LBS/A] / [Nm/A]	2.92[0.330]
BACK EMF (LINE TO LINE)	Vrms/Krpm	26.0
D.C. RESISTANCE (P-P)	OHMS	11.0
INDUCTANCE (P-P)	MILLIHENRIES	17.0
ROTOR INERTIA	Jm [IN-LBS-SEC <sup>2</sup> ] / [Kg-M <sup>2</sup> ]	0.00015[0.000017]
STATIC FRICTION	Tf	0.6[0.07]

\*25°C AMBIENT WITH A MAXIMUM CASE TEMPERATURE OF 85°C ON MOTOR. MOTOR MOUNTED ON A 1/2" X 1/2" X 1/2" ALUMINUM HEATSINK. THERMOSTAT IN STATOR WINDINGS WILL OPEN IF WINDING TEMPERATURE EXCEEDS 155°C. THIS ALLOWS FOR AN APPROXIMATE +10% HEADROOM IN THE CONTINUOUS TORQUE RATING BEFORE THERMOSTAT OPENS.

### MECHANICAL NOTES:

- AXIAL LOAD: 20 LBS MAX
- RADIAL LOAD: 35 LBS MAX @ 1" FROM FACE
- MOTOR SEALED TO IP65.
- MOTOR WEIGHT: 3.2 LBS. [ 1.5 Kg ]
- MOTOR FINISH: BLACK EPOXY
- MOTOR OUTPUT SHAFT: STAINLESS STEEL
- MILLIMETERS (INCHES)
- THIS MOTOR'S OUTPUT KEY IS A PRESS FIT.

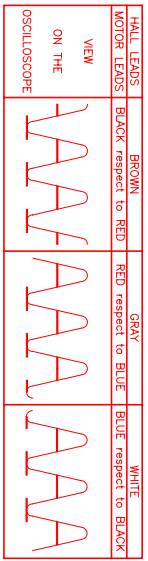
ENCODER: (290-0015Z)  
OH35-2000P6-L6-5V



### CONNECTION CHART MOTOR/ENCODER/THERM CONNECTOR: PT02E-16-23P(027) (270-00219)

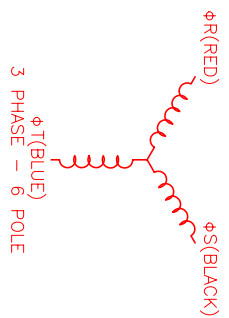
ENC/THERM WIRE LEADS	WIRE FUNCTION	WIRE COLOR
T	GROUND	BLACK
E	+5VDC	RED
F	CH A	BLUE
U	CH A	BLUE/BLK
G	CH B	GREEN
V	CH B	GRN/BLK
H	CH Z	YELLOW
W	CH Z	YEL/BLK
J	CH U	BROWN
K	CH U	BRN/BLK
X	CH V	GRAY
L	CH V	GRAY/BLK
Y	CH W	WHITE
M	CH W	WHT/BLK
N	GND/CABLE	SHLD
S	THERM	BLACK
R	THERM	BLACK
P	-	-
Z	-	-

MOTOR WIRE LEADS	PIN	WIRE FUNCTION	WIRE COLOR
A	φR	RED	RED
B	φS	BLACK	BLACK
C	φT	BLUE	BLUE
D	PE GND	GRN/YEL	GRN/YEL



MOTOR ROTATION CCW (COUNTER CLOCKWISE)  
\*LOOKING AT THE FACE OF THE MOTOR

WAVE REPRESENTING STATOR OUTPUT  
WAVE REPRESENTING HALL SENSOR



REV#	DESCRIPTION	DATE	APPD.
PRELIMINARY		2/21/00	LIN

NO.	PART NUMBER	DESCRIPTION	QTY.
1	PT02E-16-23P(027)	MOTOR/ENCODER/THERM CONNECTOR	1

NO.	PART NUMBER	DESCRIPTION	QTY.
1	PT02E-16-23P(027)	MOTOR/ENCODER/THERM CONNECTOR	1

NO.	PART NUMBER	DESCRIPTION	QTY.
1	PT02E-16-23P(027)	MOTOR/ENCODER/THERM CONNECTOR	1

NO.	PART NUMBER	DESCRIPTION	QTY.
1	PT02E-16-23P(027)	MOTOR/ENCODER/THERM CONNECTOR	1