

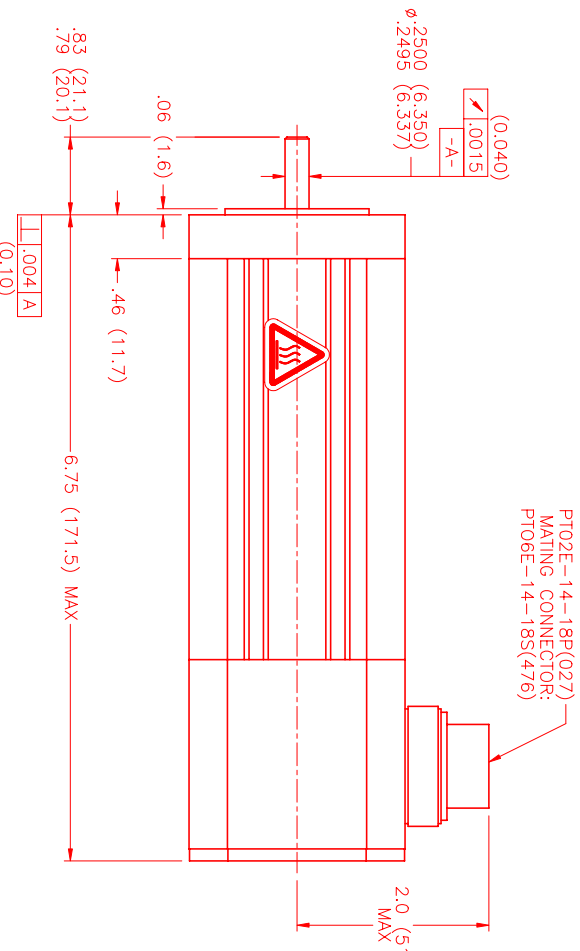
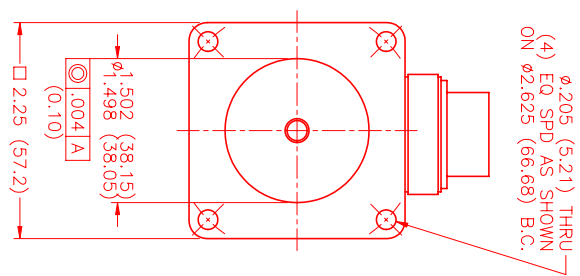
MOTOR DATA @ 230 VAC (SINE)

MOTOR PARAMETERS	UNITS	VALUE
HORSEPOWER	HP	0.48
KILOWATTS	KW	0.35
MAX. OPERATING SPEED	N. MAX RPM	6000
SPEED @ RATED TORQUE	N RATED RPM	5000
* CONTINUOUS RATED TORQUE @ 5000 RPM	IN-LBS[Nm]	6.0[0.68]
* CONTINUOUS STALL TORQUE	IN-LBS[Nm]	10.0[1.13]
CONTINUOUS LINE CURRENT	AMPS[RMS/φ]	2.2
PEAK TORQUE	IN-LBS[Nm]	30.0[3.4]
PEAK CURRENT	AMPS[RMS/φ]	6.6
MAX. THEORETICAL ACCEL.	RAD/SEC ²	188,679
TORQUE SENSITIVITY	Kt IN-LBS/AMP[RMS/φ]/Nm/AMP[RMS/φ]	4.5[0.51]
BACK EMF (LINE TO LINE)	Vrms/Krpm	28.3
D.C. RESISTANCE (P-P)	OHMS	7.0
INDUCTANCE (P-P)	MILLIHENRIES	11.0
ROTOR INERTIA	Jm[IN-LBS-SEC ²]Kg-M ²	0.000159[0.0000179]
STATIC FRICTION	Tf IN-LBS[Nm]	0.8[0.09]

*25°C AMBIENT WITH A MAXIMUM CASE TEMPERATURE OF 100°C ON MOTOR. MOTOR MOUNTED ON A 10" X 10" X 1/4" ALUMINUM HEATSINK. THERMOSTAT IN STATOR WINDINGS WILL OPEN IF WINDING TEMPERATURE EXCEEDS 155°C. THIS ALLOWS FOR AN APPROXIMATE +10% HEADROOM IN THE CONTINUOUS TORQUE RATING BEFORE THERMOSTAT OPENS.

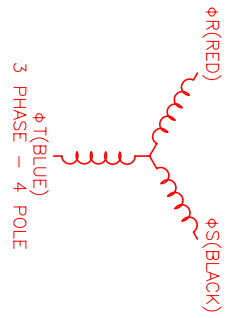
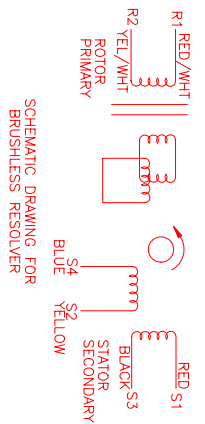
MECHANICAL NOTES:

1. AXIAL LOAD: 15 LBS MAX
2. RADIAL LOAD: 20 LBS MAX @ 1" FROM FACE
3. MOTOR SEALED TO IP65.
4. MOTOR WEIGHT: 3.8 LBS [1.7 Kg]
5. MOTOR FINISH: BLACK EPOXY
6. MOTOR OUTPUT SHAFT: STAINLESS STEEL
7. INCHES (MILLIMETERS)



CONNECTION CHART MOTOR/THERM/RESOLVER CONNECTOR: PT02E-14-18P(027) (270-00024)

MTR/THERM/RES	WIRE FUNCTION	WIRE COLOR	LEADS
A	φR	RED	-
B	φS	BLACK	-
C	φT	BLUE	-
D	PE GND	GRN/YEL	-
U	THERM	BLACK	-
N	THERM	BLACK	-
H	SIN	YELLOW	-
G	COS GND	BLACK	-
S	COS	RED	-
F	SIN GND	BLUE	-
R	REF GND	YEL/WHI	-
E	REF	RED/WHI	-
J	RES SHLD	GRN/YEL	-
K	-	-	-
L	-	-	-
M	-	-	-
P	-	-	-
T	-	-	-



TITLE: "B"/SINE/230/ENG/RES/CONN DRAWING NUMBER: MPM664BSG6G1N SCALE: 1:1		REVISIONS REV. 1 DESCRIPTION DATE APPD. PRELIMINARY 9/25/00 MVS	
NO. PART NUMBER DESCRIPTION QTY. 1 UNLESS SPECIFIED	MTS Systems Corporation Automation Division 10000 W. 15th Ave., Suite 100 Denver, CO 80202 PHONE: 303.751.1272 FAX: 303.751.1273 WWW: MVS		
DATE: 9/25/00 DRAWN: MVS CHECKED:	MATERIAL:		