

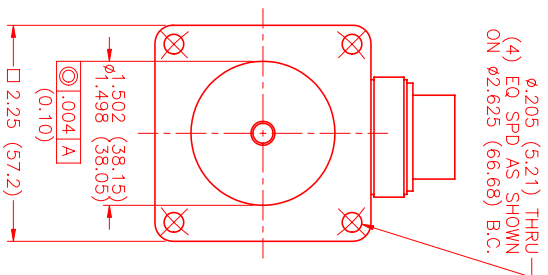
**MOTOR DATA @ 110 VAC (SINE)**

MOTOR PARAMETERS	UNITS	VALUE
HORSEPOWER	HP	.34
KILOWATTS	KW	.26
MAX. OPERATING SPEED	N MAX	3600
SPEED @ RATED TORQUE	N RATED	3000
* CONTINUOUS RATED TORQUE @ 3000 RPM	IN-LBS [Nm]	8.0 [ .90]
* CONTINUOUS LINE TORQUE	IN-LBS [Nm]	10.0 [ 1.13]
CONTINUOUS LINE CURRENT	AMPS (RMS/φ)	2.2
PEAK TORQUE	IN-LBS [Nm]	30.0 [ 3.4]
PEAK CURRENT	AMPS (RMS/φ)	6.6
MAX. THEORETICAL ACCEL.	RAD/SEC <sup>2</sup>	188,679
TORQUE SENSITIVITY	K1	4.5 [ .51]
BACK EMF (LINE TO LINE)	Vrms/Krpm	28.3
D.C. RESISTANCE (P-P)	OHMS	7.0
INDUCTANCE (P-P)	MILLIHENRIES	11.0
ROTOR INERTIA	Jm	1000159 [ .0000179]
STATIC FRICTION	Tf	.8 [ .09]

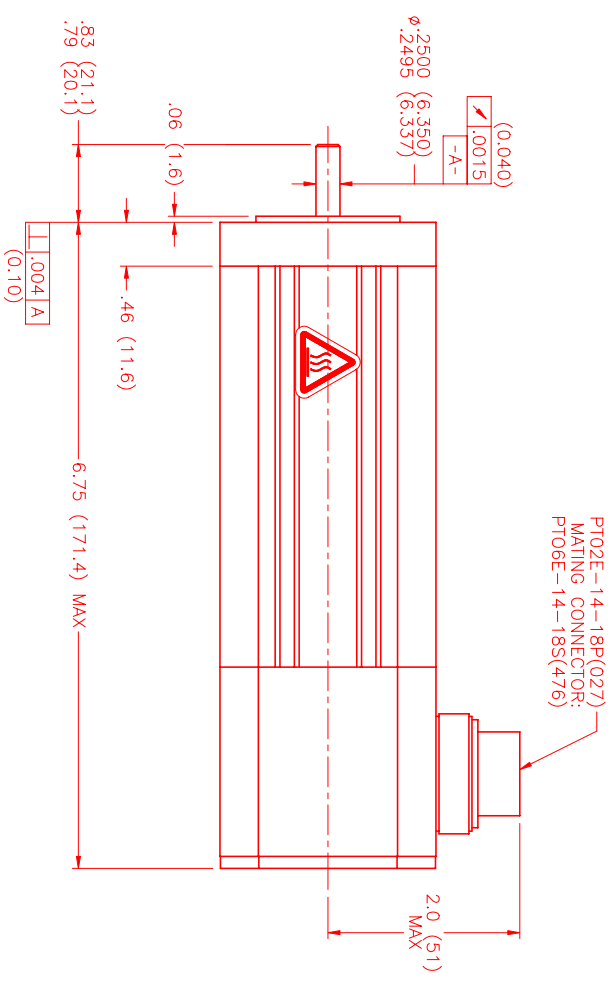
\*25°C AMBIENT WITH A MAXIMUM CASE TEMPERATURE OF 100°C ON MOTOR. MOTOR MOUNTED ON A 10" X 10" X 1/4" ALUMINUM HEAT SINK. THERMOSTAT IN STATOR WINDINGS WILL OPEN IF WINDING TEMPERATURE EXCEEDS 155°C. THIS ALLOWS FOR AN APPROXIMATE +10% HEADROOM IN THE CONTINUOUS TORQUE RATING BEFORE THERMOSTAT OPENS.

**MECHANICAL NOTES:**

1. AXIAL LOAD: 15 LBS MAX
2. RADIAL LOAD: 20 LBS MAX @ 1" FROM FACE
3. MOTOR SEALED TO IP65.
4. MOTOR WEIGHT: 3.8 LBS [ 1.7 kg]
5. MOTOR FINISH: BLACK EPOXY
6. MOTOR OUTPUT SHAFT: STAINLESS STEEL
7. MILLIMETERS (INCHES)

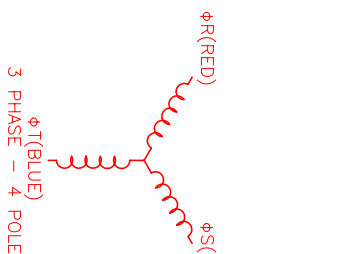
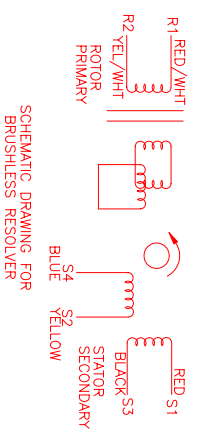


φ.205 (5.21) THRU-  
(4) EQ SPD AS SHOWN  
ON φ2.625 (66.68) B.C.



**CONNECTION CHART**  
MOTOR/THERM/RESOLVER CONNECTOR:  
PT02E-14-18P(027)  
(270-00024)

MTR/THERM/RES	WIRE	WIRE	LEADS
PIN	FUNCTION	WIRE COLOR	
A	φR	RED	
B	φS	BLACK	
C	φT	BLUE	
D	PE GND	GRN/YEL	
U	THERM	BLACK	
N	THERM	BLACK	
H	SIN	YELLOW	
G	COS GND	BLACK	
S	COS	RED	
F	SIN GND	BLUE	
R	REF GND	YEL/WHT	
E	REF	RED/WHT	
J	RES SHLD	GRN/YEL	
K	-	-	
L	-	-	
M	-	-	
P	-	-	
T	-	-	



NO.	PART NUMBER	DESCRIPTION	QTY.
UNLESS SPECIFIED			
DECIMAL ANGLES ± .005			
ANGLES ± .002			
ANGLES ± .001			
ANGLES ± .0005			
ANGLES ± .0002			
ANGLES ± .0001			
ANGLES ± .00005			
ANGLES ± .00002			
ANGLES ± .00001			
ANGLES ± .000005			
ANGLES ± .000002			
ANGLES ± .000001			
ANGLES ± .0000005			
ANGLES ± .0000002			
ANGLES ± .0000001			
ANGLES ± .00000005			
ANGLES ± .00000002			
ANGLES ± .00000001			
ANGLES ± .000000005			
ANGLES ± .000000002			
ANGLES ± .000000001			
ANGLES ± .0000000005			
ANGLES ± .0000000002			
ANGLES ± .0000000001			
ANGLES ± .00000000005			
ANGLES ± .00000000002			
ANGLES ± .00000000001			
ANGLES ± .000000000005			
ANGLES ± .000000000002			
ANGLES ± .000000000001			
ANGLES ± .0000000000005			
ANGLES ± .0000000000002			
ANGLES ± .0000000000001			
ANGLES ± .00000000000005			
ANGLES ± .00000000000002			
ANGLES ± .00000000000001			
ANGLES ± .000000000000005			
ANGLES ± .000000000000002			
ANGLES ± .000000000000001			
ANGLES ± .0000000000000005			
ANGLES ± .0000000000000002			
ANGLES ± .0000000000000001			
ANGLES ± .00000000000000005			
ANGLES ± .00000000000000002			
ANGLES ± .00000000000000001			
ANGLES ± .000000000000000005			
ANGLES ± .000000000000000002			
ANGLES ± .000000000000000001			
ANGLES ± .0000000000000000005			
ANGLES ± .0000000000000000002			
ANGLES ± .0000000000000000001			
ANGLES ± .00000000000000000005			
ANGLES ± .00000000000000000002			
ANGLES ± .00000000000000000001			
ANGLES ± .000000000000000000005			
ANGLES ± .000000000000000000002			
ANGLES ± .000000000000000000001			
ANGLES ± .0000000000000000000005			
ANGLES ± .0000000000000000000002			
ANGLES ± .0000000000000000000001			
ANGLES ± .00000000000000000000005			
ANGLES ± .00000000000000000000002			
ANGLES ± .00000000000000000000001			
ANGLES ± .000000000000000000000005			
ANGLES ± .000000000000000000000002			
ANGLES ± .000000000000000000000001			
ANGLES ± .0000000000000000000000005			
ANGLES ± .0000000000000000000000002			
ANGLES ± .0000000000000000000000001			
ANGLES ± .00000000000000000000000005			
ANGLES ± .00000000000000000000000002			
ANGLES ± .00000000000000000000000001			
ANGLES ± .000000000000000000000000005			
ANGLES ± .000000000000000000000000002			
ANGLES ± .000000000000000000000000001			
ANGLES ± .0000000000000000000000000005			
ANGLES ± .0000000000000000000000000002			
ANGLES ± .0000000000000000000000000001			
ANGLES ± .00000000000000000000000000005			
ANGLES ± .00000000000000000000000000002			
ANGLES ± .00000000000000000000000000001			
ANGLES ± .000000000000000000000000000005			
ANGLES ± .000000000000000000000000000002			
ANGLES ± .000000000000000000000000000001			
ANGLES ± .0000000000000000000000000000005			
ANGLES ± .0000000000000000000000000000002			
ANGLES ± .0000000000000000000000000000001			
ANGLES ± .00000000000000000000000000000005			
ANGLES ± .00000000000000000000000000000002			
ANGLES ± .00000000000000000000000000000001			
ANGLES ± .000000000000000000000000000000005			
ANGLES ± .000000000000000000000000000000002			
ANGLES ± .000000000000000000000000000000001			
ANGLES ± .0000000000000000000000000000000005			
ANGLES ± .0000000000000000000000000000000002			
ANGLES ± .0000000000000000000000000000000001			
ANGLES ± .00000000000000000000000000000000005			
ANGLES ± .00000000000000000000000000000000002			
ANGLES ± .00000000000000000000000000000000001			
ANGLES ± .000000000000000000000000000000000005			
ANGLES ± .000000000000000000000000000000000002			
ANGLES ± .000000000000000000000000000000000001			
ANGLES ± .0000000000000000000000000000000000005			
ANGLES ± .0000000000000000000000000000000000002			
ANGLES ± .0000000000000000000000000000000000001			
ANGLES ± .00000000000000000000000000000000000005			
ANGLES ± .00000000000000000000000000000000000002			
ANGLES ± .00000000000000000000000000000000000001			
ANGLES ± .000000000000000000000000000000000000005			
ANGLES ± .000000000000000000000000000000000000002			
ANGLES ± .000000000000000000000000000000000000001			
ANGLES ± .0000000000000000000000000000000000000005			
ANGLES ± .0000000000000000000000000000000000000002			
ANGLES ± .0000000000000000000000000000000000000001			
ANGLES ± .005			
ANGLES ± .002			
ANGLES ± .001			
ANGLES ± .0005			
ANGLES ± .0002			
ANGLES ± .0001			
ANGLES ± .005			
ANGLES ± .002			
ANGLES ± .001			
ANGLES ± .0005			
ANGLES ± .0002			
ANGLES ± .0001			
ANGLES ± .005			
ANGLES ± .002			
ANGLES ± .001			
ANGLES ± .0005			
ANGLES ± .0002			
ANGLES ± .0001			
ANGLES ± .005			
ANGLES ± .002			
ANGLES ± .001			
ANGLES ± .0005			
ANGLES ± .0002			
ANGLES ± .0001			
ANGLES ± .005			
ANGLES ± .002			
ANGLES ± .001			
ANGLES ± .0005			
ANGLES ± .0002			
ANGLES ± .0001			
ANGLES ± .005			
ANGLES ± .002			
ANGLES ± .001			
ANGLES ± .0005			
ANGLES ± .0002			
ANGLES ± .0001			
ANGLES ± .005			
ANGLES ± .002			
ANGLES ± .001			
ANGLES ± .0005			
ANGLES ± .0002			
ANGLES ± .0001			
ANGLES ± .005			
ANGLES ± .002			
ANGLES ± .001			
ANGLES ± .0005			
ANGLES ± .0002			
ANGLES ± .			