

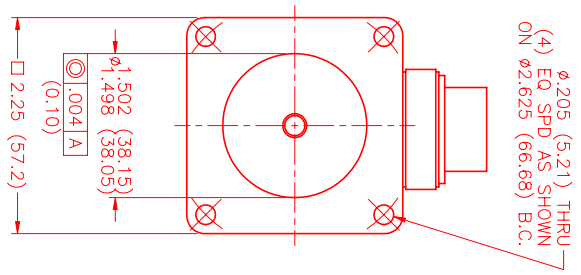
# MOTOR DATA @ 110 VAC (SINE)

MOTOR PARAMETERS	UNITS	VALUE
HORSEPOWER	HP	.48
KILOWATTS	KW RATED	.35
MAX. OPERATING SPEED	N. MAX RPM	6500
SPEED @ RATED TORQUE	N RATED RPM	5000
* CONTINUOUS RATED TORQUE @ 5000 RPM	IN-LBS[Nm]	6.0[.67]
* CONTINUOUS STALL TORQUE	IN-LBS[Nm]	10.0[1.12]
CONTINUOUS LINE CURRENT	AMPS[RMS/φ]	3.5
PEAK TORQUE	IN-LBS[Nm]	30.0[3.4]
PEAK CURRENT	AMPS[RMS/φ]	10.6
MAX. THEORETICAL ACCEL.	RAD/SEC <sup>2</sup>	188,679
TORQUE SENSITIVITY	Kt IN-LBS/AMP[RMS/φ] / Nm/AMP[RMS/φ]	2.83[0.32]
BACK EMF (LINE TO LINE)	Vrms/Krpm	17.8
D.C. RESISTANCE (P-P)	OHMS	3.1
INDUCTANCE (P-P)	MILLIHENRIES	5.1
ROTOR INERTIA	Jm [IN-LBS-SEC <sup>2</sup> ] / Kg-M <sup>2</sup>	.000159[.0000179]
STATIC FRICTION	Tf [IN-LBS] / Nm	.8[.09]

\*25°C AMBIENT WITH A MAXIMUM CASE TEMPERATURE OF 100°C ON MOTOR. MOTOR MOUNTED ON A 10" X 10" X 1/4" ALUMINUM HEATSINK. THERMOSTAT IN STATOR WINDINGS WILL OPEN IF WINDING TEMPERATURE EXCEEDS 155°C. THIS ALLOWS FOR AN APPROXIMATE +10% HEADROOM IN THE CONTINUOUS TORQUE RATING BEFORE THERMOSTAT OPENS.

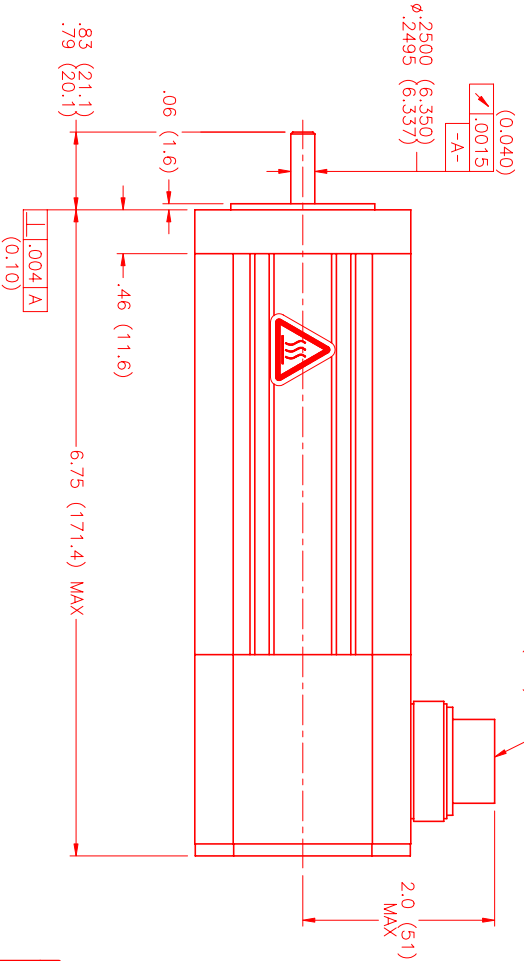
### MECHANICAL NOTES:

1. AXIAL LOAD: 15 LBS MAX
2. RADIAL LOAD: 20 LBS MAX @ 1" FROM FACE
3. MOTOR SEALED TO IP65.
4. MOTOR WEIGHT: 3.8 LBS [ 1.7 Kg ]
5. MOTOR FINISH: BLACK EPOXY
6. MOTOR OUTPUT SHAFT: STAINLESS STEEL
7. INCHES (MILLIMETERS)

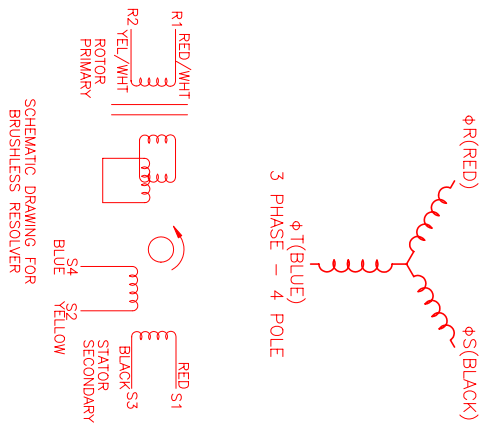


### CONNECTION CHART MOTOR/THERM/RESOLVER CONNECTOR: PT02E-14-18P(027) (270-00024)

MTR/THERM/RES	WIRE FUNCTION	WIRE COLOR	LEADS
PIN			
A	φR	RED	
B	φS	BLACK	
C	φT	BLUE	
D	PE GND	GRN/YEL	
U	THERM	BLACK	
N	THERM	BLACK	
H	SIN	YELLOW	
G	COS GND	BLACK	
S	COS	RED	
F	SIN GND	BLUE	
R	REF GND	YEL/WHI	
E	REF	RED/WHI	
J	RES SHLD	GRN/YEL	
K	-	-	
L	-	-	
M	-	-	
P	-	-	
T	-	-	



PT02E-14-18P(027)  
MATING CONNECTOR:  
PT06E-14-18S(476)



SCHEMATIC DRAWING FOR BRUSHLESS RESOLVER

REV#	DESCRIPTION	DATE	APPD.
PRELIMINARY		4/17/00	LIN

MTS #A/CONN/ENG/RES DRAWING NUMBER MPM664ASF6G1N

NO. PART NUMBER	DESCRIPTION	QTY.
UNLESS SPECIFIED		
DECIMAL ANG # 205	MTS Automation Division	
DECIMAL ANG # 200		
DECIMAL ANG # 175		
DATE: 7/10/02	TITLE: "A" /SINE/110/ENG/RES/CONN	REV:
DRAWN: LIN	CHECKED:	APPROVED:
DRAWING NUMBER: MPM664ASF6G1N	MATERIAL:	SCALE: 1:1