

MOTOR DATA @ 110 VAC (TRAP)

MOTOR PARAMETERS	UNITS	VALUE
HORSEPOWER	HP RATED	.22
KILOWATTS	KW RATED	.16
MAX. OPERATING SPEED	N MAX	5000
SPEED @ RATED TORQUE	RPM	4000
* CONTINUOUS RATED TORQUE @ 4000 RPM	IN-LBS [Nm]	3.4 [3.8]
* CONTINUOUS STALL TORQUE	IN-LBS [Nm]	5.0 [5.6]
CONTINUOUS LINE CURRENT	AMPS	2.5
PEAK TORQUE	IN-LBS [Nm]	15.1 [1.7]
PEAK CURRENT	AMPS	7.6
MAX. THEORETICAL ACCEL.	RAD/SEC ²	155,670
TORQUE SENSITIVITY	KT [IN-LBS/AMP] [Nm/AMP]	2.0 [2.3]
BACK EMF (LINE TO LINE)	Vrms/Krpm	17.8
D.C. RESISTANCE (P-P)	OHMS	8.4
INDUCTANCE (P-P)	MILLIHENRIES	11.6
ROTOR INERTIA	Jm [IN-LBS-SEC ²] [Kg-M ²]	.000097 [0.0000109]
STATIC FRICTION	Tf [IN-LBS] [Nm]	.5 [0.6]

*25°C AMBIENT WITH A MAXIMUM CASE TEMPERATURE OF 100°C ON MOTOR. MOTOR MOUNTED ON A 10" X 10" X 10" X 1 1/4" ALUMINUM HEATSINK. THERMOSTAT IN STATOR WINDINGS WILL OPEN IF WINDING TEMPERATURE EXCEEDS 155°C. THIS ALLOWS FOR AN APPROXIMATE +10% HEADROOM IN THE CONTINUOUS TORQUE RATING BEFORE THERMOSTAT OPENS.

MECHANICAL NOTES:

- AXIAL LOAD: 15 LBS MAX
- RADIAL LOAD: 20 LBS MAX @ 1" FROM FACE
- MOTOR SEALED TO IP65.
- MOTOR WEIGHT: 2.6 LBS. [1.2 Kg]
- MOTOR FINISH: BLACK EPOXY
- MOTOR OUTPUT SHAFT: STAINLESS STEEL
- INCHES (MILLIMETERS)

ENCODER: (290-00056)

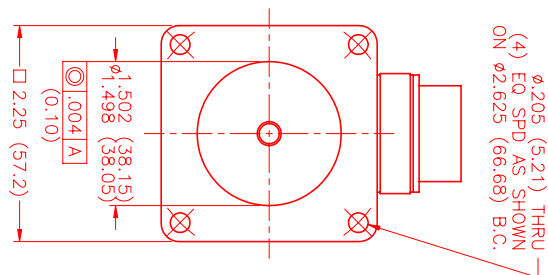
OH35-2000P4-L6-SV

CONNECTION CHART

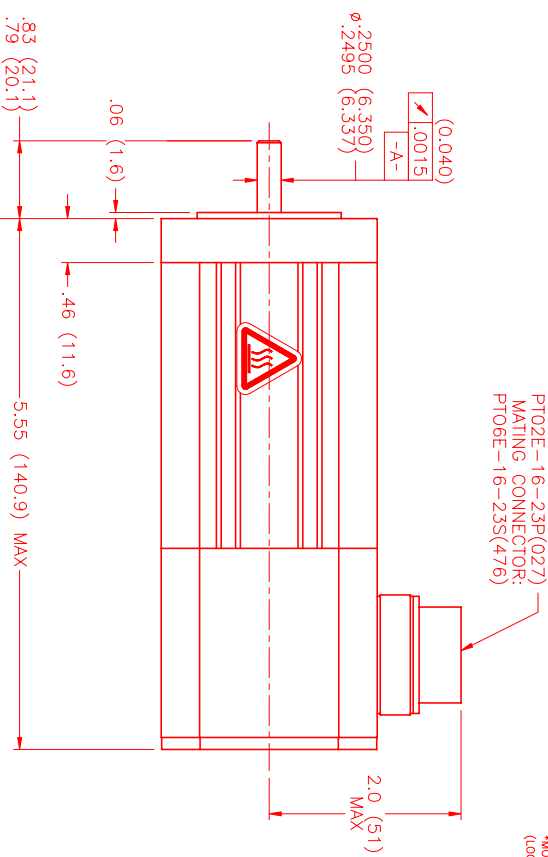
MOTOR/ENCODER/THERM CONNECTOR:
PT02E-16-23P(027)
(270-00219)

MOTOR WIRE LEADS	WIRE	WIRE COLOR
A	φR	RED
B	φS	BLACK
C	φT	BLUE
D	PE GND	GRN/YEL

ENC/THERM WIRE LEADS	PIN	WIRE FUNCTION	WIRE COLOR
	T	GROUND	BLACK
	E	+5VDC	RED
	F	CH A	BLUE
	U	CH A \	BLUE/BLK
	G	CH B	GREEN
	V	CH B \	GRN/BLK
	H	CH Z	YELLOW
	W	CH Z \	YEL/BLK
	J	CH U	BROWN
	K	CH U \	BRN/BLK
	X	CH V	GRAY
	L	CH V \	GRAY/BLK
	Y	CH W	WHITE
	M	CH W \	WHT/BLK
	N	GND/CABLE	SHLD
	S	THERM	BLACK
	R	THERM	BLACK
	P	-	-
	Z	-	-



(4) φ.205 (5.21) THRU EQ SPD AS SHOWN ON φ2.625 (66.68) B.C.

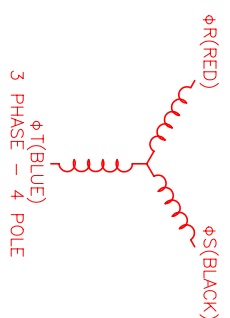


PT02E-16-23P(027) MATING CONNECTOR: PT02E-16-23S(476)

VIEW	HALL LEADS	BROWN	GRAY	WHITE
ON THE OSCILLOSCOPE	BLACK respect to RED	RED respect to BLUE	BLUE respect to BLACK	

MOTOR & HALL POSITION CHART

*MOTOR ROTATION CW (COUNTER CLOCKWISE) (LOOKING AT THE FACE OF THE MOTOR)



NO. PART NUMBER	DESCRIPTION	QTY.
UNLESS SPECIFIED		
DESIGNED BY: MVS	DATE: 5/25/99	APPROVED: MVS
CHECKED BY: MVS	TITLE: "A" TRAP/110/ENG/72/CONN	SCALE: 1:1
DRAWN BY: MPM62ATF6UN1N		

REV. 1	DESCRIPTION	DATE	APP'D.
PRELIMINARY		5/25/99	MVS

FORM 5-A TRAP/110/ENG/72/CONN DRAWING NUMBER: MPM62ATF6UN1N

REVISIONS