

MOTOR DATA @ 230 VAC (SINE)

MOTOR PARAMETERS	UNITS	VALUE
MOTOR HORSEPOWER	HP	0.21
KILOWATTS	KW	0.16
MAX. OPERATING SPEED	N MAX RPM	5000
SPEED @ RATED TORQUE	N RATED RPM	4000
* CONTINUOUS RATED TORQUE @ 4000 RPM	IN-LBS [Nm]	3.4 [0.38]
* CONTINUOUS STALL TORQUE	IN-LBS [Nm]	5.0 [0.56]
CONTINUOUS LINE CURRENT	AMPS (RMS/Φ)	1.8
PEAK TORQUE	IN-LBS [Nm]	15.1 [1.7]
PEAK CURRENT	AMPS (RMS/Φ)	5.4
MAX. THEORETICAL ACCEL.	RAD/SEC ²	155.670
TORQUE SENSITIVITY	Kt IN-LBS/AMP [Nm/Φ] / (Nm/AMP [RMS/Φ])	2.89 [0.33]
BACK EMF (LINE TO LINE)	Vrms /Krpm	18.2
D.C. RESISTANCE (P-P)	OHMS	8.4
INDUCTANCE (P-P)	±10% MILLIHENRIES	11.6
ROTOR INERTIA	Jm IN-LBS-SEC ² [Kg-M ²]	0.000097 [0.0000109]
STATIC FRICTION	Tf IN-LBS [Nm]	0.5 [0.06]

CONNECTION CHART

MOTOR/THERM CONNECTOR:
 @ BEGA089NN00000007000
 (270-00236)

PIN	WIRE FUNCTION	WIRE COLOR
1	ΦR(U1)	RED
2	PE GND	GRN/YEL
3	ΦS(W1)	BLACK
4	ΦT(V1)	BLUE
A	-	-
B	-	-
C	THERM	BLACK
D	THERM	BLACK

ENCODER CONNECTOR:
 @ AEGA052NN00000020000
 (270-00257)

PIN	WIRE FUNCTION	WIRE COLOR
1	GND(OV)	BLACK
2	CH A(A)	BLUE/BLK
3	CH A(A)	BLUE
4	CH B(B)	GREEN
5	CH B(B)	GRN/BLK
6	CH Z(Z)	YELLOW
7	CH Z(Z)	YEL/BLK
8	+5V(+5V)	RED
9	-	-
10	CH U(ULG U)	BROWN
11	CH V(VLG V)	GRAY
12	CH W(WLG W)	WHITE

MOTOR & HALL POSITION CHART

HALL LEADS	BROWN	GRAY	WHITE
MOTOR LEADS	BLACK respect to RED	RED respect to BLUE	BLUE respect to BLACK
VIEW ON THE OSCILLOSCOPE	AAAF	AAAA	AAAA

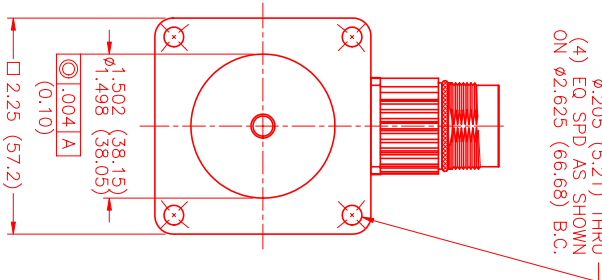
*MOTOR ROTATION Ccw (COUNTER CLOCKWISE)
 (LOOKING AT THE FACE OF THE MOTOR)



- MECHANICAL NOTES:**
- AXIAL LOAD: 15 LBS MAX
 - RADIAL LOAD: 20 LBS MAX @ 1" FROM FACE
 - MOTOR SEALED TO IP65.
 - MOTOR WEIGHT: 2.6 LBS [1.2 Kg]
 - MOTOR FINISH: BLACK EPOXY
 - MOTOR OUTPUT SHAFT: STAINLESS STEEL
 - MILLIMETERS (INCHES)

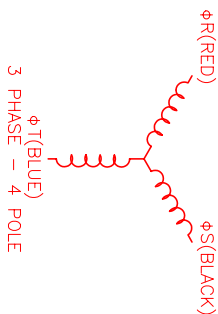
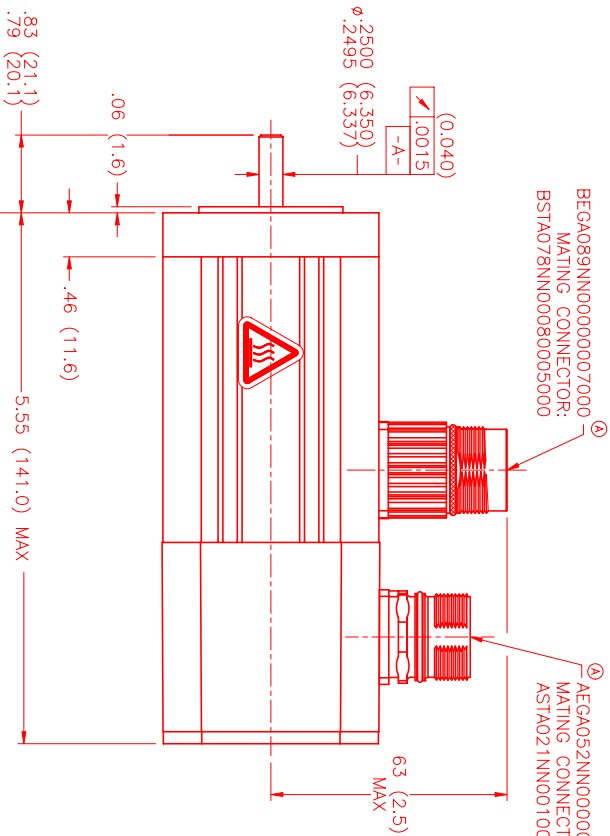
ENCODER: (290-00108)
 OH35-2046P4-L6-SV

φ2.05 (5.21) THRU
 (4) EO SPD AS SHOWN
 ON φ2.625 (66.68) B.C.



BEGA089NN00000007000
 MATING CONNECTOR:
 BSTA078NN00080005000

AEGA052NN00000020000
 MATING CONNECTOR:
 ASTA021NN00100005000



NO.	PART NUMBER	DESCRIPTION	QTY.
UNLESS SPECIFIED			
DECIMAL: .005			
FRACTIONAL: 1/32			
DATE: 10/19/00			
CHECKED: MVS			
APPROVED: MVS			
DATE: 10/19/00			
CHECKED: MVS			
APPROVED: MVS			

REV.	DESCRIPTION	DATE	APPD.
A	PRELIMINARY	10/26/00	MVS
A	E.C.O. - 620	4/9/01	AJS

REV.	DESCRIPTION	DATE	APPD.
A	PRELIMINARY	10/26/00	MVS
A	E.C.O. - 620	4/9/01	AJS

MTS Systems Corporation
 Automation Division

SCALE: 1:1