

MOTOR DATA @ 230 VAC (TRAP)

MOTOR PARAMETERS	UNITS	VALUE
HORSEPOWER	HP	35.7
KILOWATTS	KW	26.7
MAX. OPERATING SPEED	N MAX RPM	3000
SPEED @ RATED TORQUE	N RATED RPM	2400
* CONTINUOUS RATED TORQUE @ 2400 RPM	IN-LBS[Nm]	939.0[105.0]
* CONTINUOUS STALL TORQUE	IN-LBS[Nm]	1092.0[122.7]
CONTINUOUS LINE CURRENT	AMPS	123.0
PEAK TORQUE	IN-LBS[Nm]	1780.0[200.0]
PEAK CURRENT	AMPS	200.0
MAX. THEORETICAL ACCEL.	RAD/SEC ²	13,383
TORQUE SENSITIVITY	Kt[IN-LBS/AMP][Nm/AMP]	8.9[1.0]
BACK EMF (LINE TO LINE)	Vrms/Krpm	79.0
D.C. RESISTANCE (P-P)	OHMS	0.05
INDUCTANCE (P-P)	MILLIHENRIES	0.96
ROTOR INERTIA	Jm[IN-LBS-SEC ²][Kg-M ²]	.133[.0150]
STATIC FRICTION	Tf[IN-LBS][Nm]	13.0[1.5]

*25°C AMBIENT WITH A MAXIMUM CASE TEMPERATURE OF 100°C ON MOTOR. MOTOR MOUNTED ON A 14" X 14" X 3/4" ALUMINUM HEATSINK. THERMOSTAT IN STATOR WINDINGS WILL OPEN IF WINDING TEMPERATURE EXCEEDS 155°C. THIS ALLOWS FOR AN APPROXIMATE +10% HEADROOM IN THE CONTINUOUS TORQUE RATING BEFORE THERMOSTAT OPENS.

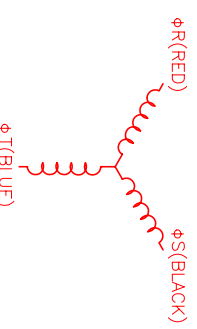
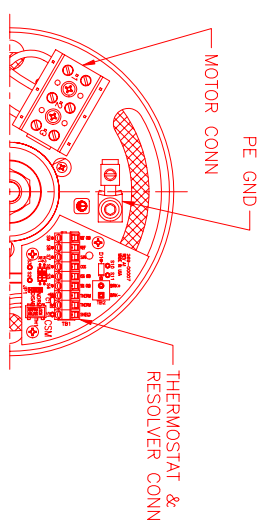
MECHANICAL NOTES:

- AXIAL LOAD: 100 LBS MAX
- RADIAL LOAD: 250 LBS MAX @ 1" FROM FACE
- MOTOR SEALED TO IP65.
- MOTOR WEIGHT: 161 LBS. [73.0 kg]
- MOTOR FINISH: BLACK EPOXY
- MILLIMETERS (INCHES)

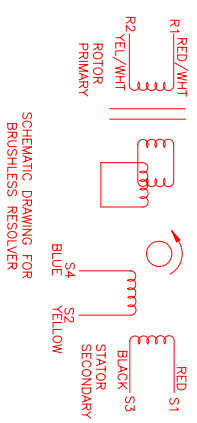
CONNECTION CHART

MOTOR WIRE LEADS	WIRE FUNCTION	WIRE COLOR
1	ΦS	BLACK
2	ΦT	BLUE
3	PE GND	-

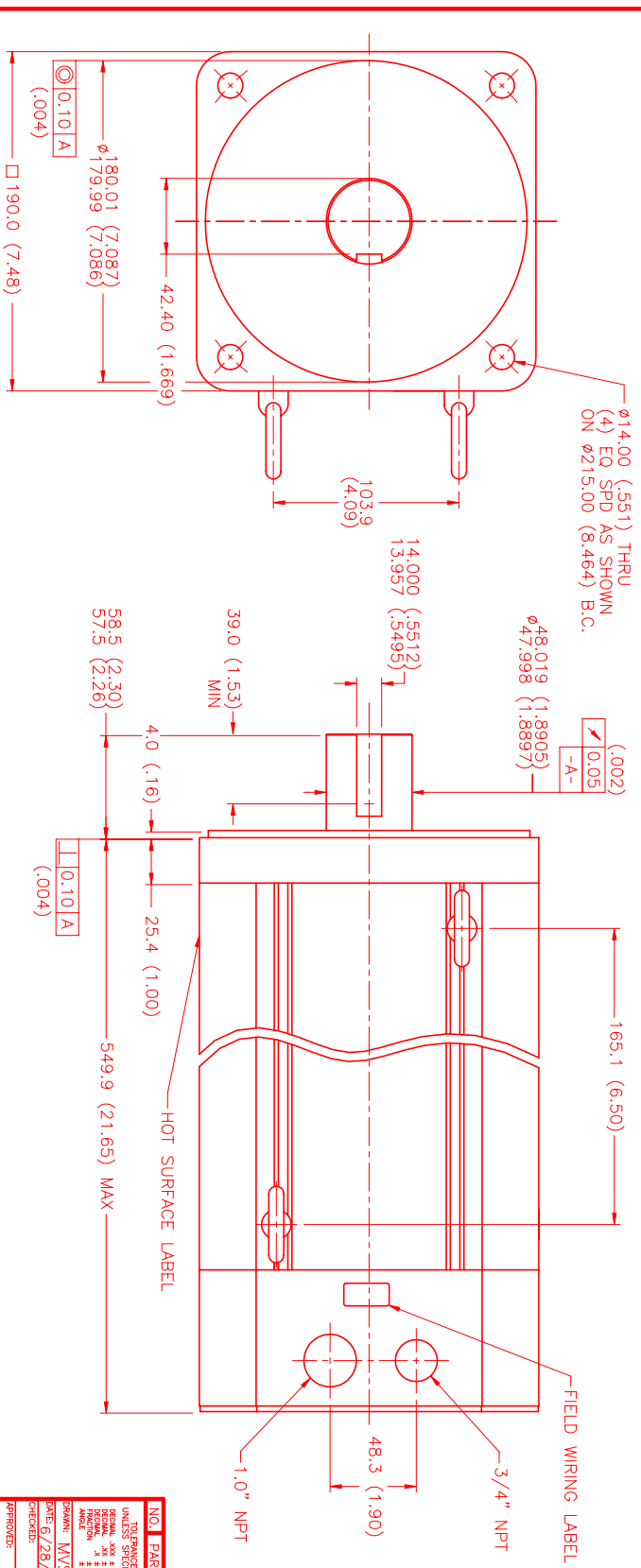
RES/THERM WIRE LEADS	WIRE FUNCTION	WIRE COLOR
S9	REF GND	YEL/WHI
S8	REF	RED/WHI
S7	SIN	YELLOW
S6	COS	RED
S5	COS GND	BLACK
S4	SIN GND	BLUE
S3	THERM	BLACK
S2	THERM	BLACK
S1	RES SHLD	GRN/YEL



3 PHASE - 6 POLE



SCHEMATIC DRAWING FOR BRUSHLESS RESOLVER



NO.	PART NUMBER	DESCRIPTION	QTY.
1	MPM1904ATG7G3N	Brushless Resolver	1

REV.	DESCRIPTION	DATE	APP.
PRELIMINARY		8/12/99	MVS

MTS Automation Division
 MTS Systems Corporation
 1400 S. 10th St.
 Phoenix, AZ 85064
 PHONE: 602.972.1000
 FAX: 602.972.1001
 E-MAIL: MVS@MTS.COM
 DATE: 6/28/99
 DRAWN: MVS
 CHECKED: MVS
 TITLE: "A" TRAP / 230/MET/RES/NPT
 MATERIAL: ALUMINUM
 QUANTITY: 1/2:1