

### MOTOR DATA @ 230 VAC (TRAP)

MOTOR PARAMETERS	UNITS	VALUE
HORSEPOWER	HP	14.4
KILOWATTS	KW	10.7
MAX. OPERATING SPEED	N. MAX RPM	1500
SPEED @ RATED TORQUE	N. RATED RPM	1200
* CONTINUOUS RATED TORQUE @ 1200 RPM	IN-LBS[Nm]	757.0[85.0]
* CONTINUOUS STALL TORQUE	IN-LBS[Nm]	880.0[98.8]
CONTINUOUS LINE CURRENT	AMPS	49.0
PEAK TORQUE	IN-LBS[Nm]	2640.0[296.0]
PEAK CURRENT	AMPS	148.0
MAX. THEORETICAL ACCEL.	RAD/SEC <sup>2</sup>	25.631
TORQUE SENSITIVITY	Kt[IN-LBS/AMP][Nm/AMP]	17.6[2.0]
BACK-EMF (LINE TO LINE)	Vrms/Krpm	158.0
D.C. RESISTANCE (P-P)	OHMS	.29
INDUCTANCE (P-P)	MILLIHENRIES	4.8
ROTOR INERTIA	Jm[IN-LBS-SEC <sup>2</sup> ][Kg-M <sup>2</sup> ]	.103[.0116]
STATIC FRICTION	Tf[IN-LBS][Nm]	11.4[1.3]

\*25°C AMBIENT WITH A MAXIMUM CASE TEMPERATURE OF 100°C ON MOTOR. MOTOR MOUNTED ON A 14" X 14" X 14" X 3/4" ALUMINUM HEATSINK. THERMOSTAT IN STATOR WINDINGS WILL OPEN IF WINDING TEMPERATURE EXCEEDS 155°C. THIS ALLOWS FOR AN APPROXIMATE +10% HEADROOM IN THE CONTINUOUS TORQUE RATING BEFORE THERMOSTAT OPENS.

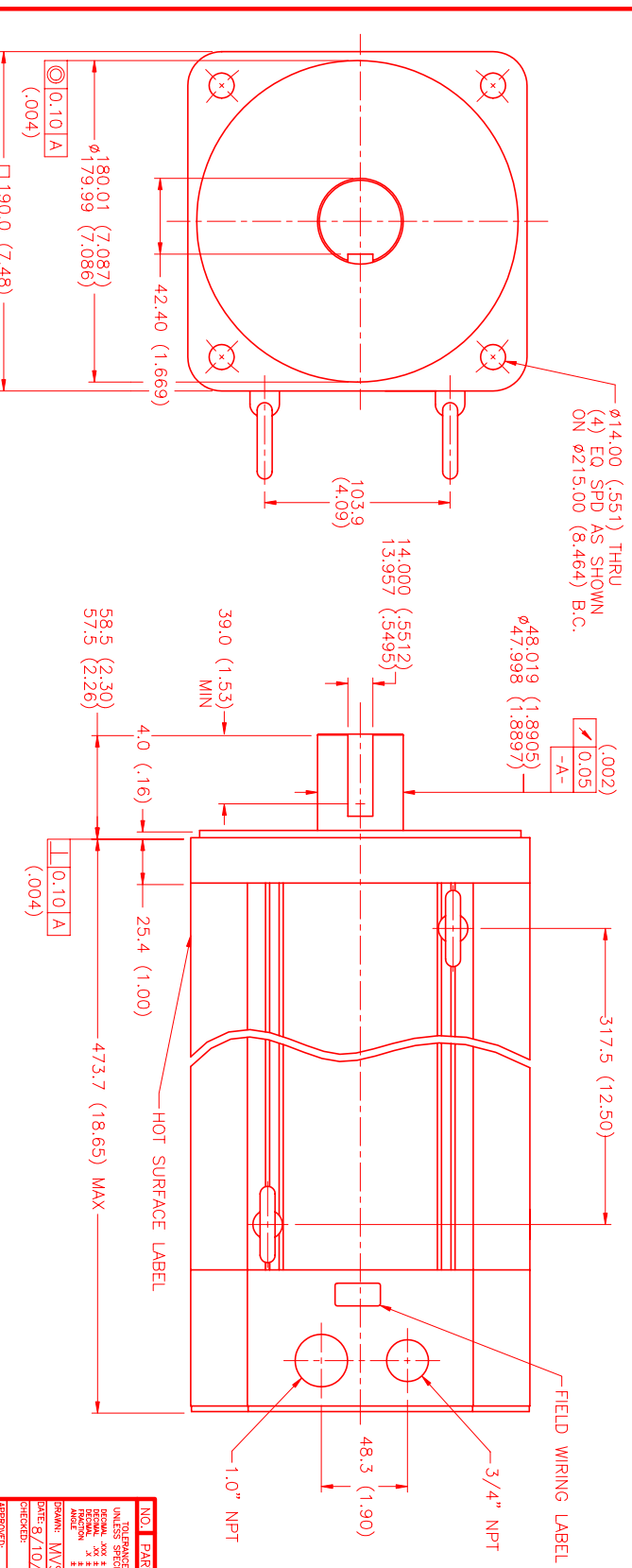
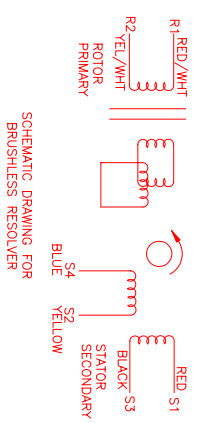
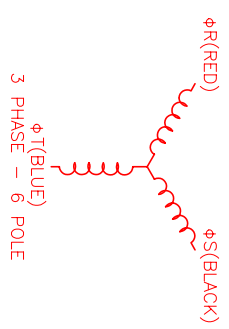
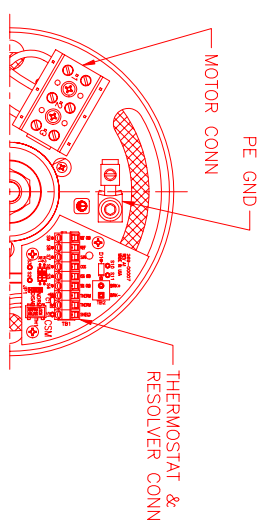
#### MECHANICAL NOTES:

1. AXIAL LOAD: 100 LBS MAX
2. RADIAL LOAD: 250 LBS MAX @ 1" FROM FACE
3. MOTOR SEALED TO IP65.
4. MOTOR WEIGHT: 130 LBS. [ 59.0 kg]
5. MOTOR FINISH: BLACK EPOXY
6. MILLIMETERS (INCHES)

### CONNECTION CHART

MOTOR WIRE LEADS	WIRE FUNCTION	WIRE COLOR
1	ΦS	BLACK
2	ΦT	BLUE
3	PE GND	-

RES/THERM WIRE LEADS	WIRE FUNCTION	WIRE COLOR
S9	REF GND	YEL/WHIT
S8	REF	RED/WHIT
S7	SIN	YELLOW
S6	COS	RED
S5	COS GND	BLACK
S4	SIN GND	BLUE
S3	THERM	BLACK
S2	THERM	BLACK
S1	RES SHLD	GRN/YEL



NO.	PART NUMBER	DESCRIPTION	QTY.
1	MTS	MTS Systems Corporation Automation Division	
2	DATE: 8/10/99	TITLE: "B"/TRAP/230/MET/RES/NPT	REV: 1/2-1
3	DATE: 8/10/99	TITLE: "B"/TRAP/230/MET/RES/NPT	REV: 1/2-1
4	DATE: 8/10/99	TITLE: "B"/TRAP/230/MET/RES/NPT	REV: 1/2-1
5	DATE: 8/10/99	TITLE: "B"/TRAP/230/MET/RES/NPT	REV: 1/2-1
6	DATE: 8/10/99	TITLE: "B"/TRAP/230/MET/RES/NPT	REV: 1/2-1
7	DATE: 8/10/99	TITLE: "B"/TRAP/230/MET/RES/NPT	REV: 1/2-1
8	DATE: 8/10/99	TITLE: "B"/TRAP/230/MET/RES/NPT	REV: 1/2-1
9	DATE: 8/10/99	TITLE: "B"/TRAP/230/MET/RES/NPT	REV: 1/2-1
10	DATE: 8/10/99	TITLE: "B"/TRAP/230/MET/RES/NPT	REV: 1/2-1
11	DATE: 8/10/99	TITLE: "B"/TRAP/230/MET/RES/NPT	REV: 1/2-1
12	DATE: 8/10/99	TITLE: "B"/TRAP/230/MET/RES/NPT	REV: 1/2-1
13	DATE: 8/10/99	TITLE: "B"/TRAP/230/MET/RES/NPT	REV: 1/2-1
14	DATE: 8/10/99	TITLE: "B"/TRAP/230/MET/RES/NPT	REV: 1/2-1
15	DATE: 8/10/99	TITLE: "B"/TRAP/230/MET/RES/NPT	REV: 1/2-1
16	DATE: 8/10/99	TITLE: "B"/TRAP/230/MET/RES/NPT	REV: 1/2-1
17	DATE: 8/10/99	TITLE: "B"/TRAP/230/MET/RES/NPT	REV: 1/2-1
18	DATE: 8/10/99	TITLE: "B"/TRAP/230/MET/RES/NPT	REV: 1/2-1
19	DATE: 8/10/99	TITLE: "B"/TRAP/230/MET/RES/NPT	REV: 1/2-1
20	DATE: 8/10/99	TITLE: "B"/TRAP/230/MET/RES/NPT	REV: 1/2-1
21	DATE: 8/10/99	TITLE: "B"/TRAP/230/MET/RES/NPT	REV: 1/2-1
22	DATE: 8/10/99	TITLE: "B"/TRAP/230/MET/RES/NPT	REV: 1/2-1
23	DATE: 8/10/99	TITLE: "B"/TRAP/230/MET/RES/NPT	REV: 1/2-1
24	DATE: 8/10/99	TITLE: "B"/TRAP/230/MET/RES/NPT	REV: 1/2-1
25	DATE: 8/10/99	TITLE: "B"/TRAP/230/MET/RES/NPT	REV: 1/2-1
26	DATE: 8/10/99	TITLE: "B"/TRAP/230/MET/RES/NPT	REV: 1/2-1
27	DATE: 8/10/99	TITLE: "B"/TRAP/230/MET/RES/NPT	REV: 1/2-1
28	DATE: 8/10/99	TITLE: "B"/TRAP/230/MET/RES/NPT	REV: 1/2-1
29	DATE: 8/10/99	TITLE: "B"/TRAP/230/MET/RES/NPT	REV: 1/2-1
30	DATE: 8/10/99	TITLE: "B"/TRAP/230/MET/RES/NPT	REV: 1/2-1
31	DATE: 8/10/99	TITLE: "B"/TRAP/230/MET/RES/NPT	REV: 1/2-1
32	DATE: 8/10/99	TITLE: "B"/TRAP/230/MET/RES/NPT	REV: 1/2-1
33	DATE: 8/10/99	TITLE: "B"/TRAP/230/MET/RES/NPT	REV: 1/2-1
34	DATE: 8/10/99	TITLE: "B"/TRAP/230/MET/RES/NPT	REV: 1/2-1
35	DATE: 8/10/99	TITLE: "B"/TRAP/230/MET/RES/NPT	REV: 1/2-1
36	DATE: 8/10/99	TITLE: "B"/TRAP/230/MET/RES/NPT	REV: 1/2-1
37	DATE: 8/10/99	TITLE: "B"/TRAP/230/MET/RES/NPT	REV: 1/2-1
38	DATE: 8/10/99	TITLE: "B"/TRAP/230/MET/RES/NPT	REV: 1/2-1
39	DATE: 8/10/99	TITLE: "B"/TRAP/230/MET/RES/NPT	REV: 1/2-1
40	DATE: 8/10/99	TITLE: "B"/TRAP/230/MET/RES/NPT	REV: 1/2-1
41	DATE: 8/10/99	TITLE: "B"/TRAP/230/MET/RES/NPT	REV: 1/2-1
42	DATE: 8/10/99	TITLE: "B"/TRAP/230/MET/RES/NPT	REV: 1/2-1
43	DATE: 8/10/99	TITLE: "B"/TRAP/230/MET/RES/NPT	REV: 1/2-1
44	DATE: 8/10/99	TITLE: "B"/TRAP/230/MET/RES/NPT	REV: 1/2-1
45	DATE: 8/10/99	TITLE: "B"/TRAP/230/MET/RES/NPT	REV: 1/2-1
46	DATE: 8/10/99	TITLE: "B"/TRAP/230/MET/RES/NPT	REV: 1/2-1
47	DATE: 8/10/99	TITLE: "B"/TRAP/230/MET/RES/NPT	REV: 1/2-1
48	DATE: 8/10/99	TITLE: "B"/TRAP/230/MET/RES/NPT	REV: 1/2-1
49	DATE: 8/10/99	TITLE: "B"/TRAP/230/MET/RES/NPT	REV: 1/2-1
50	DATE: 8/10/99	TITLE: "B"/TRAP/230/MET/RES/NPT	REV: 1/2-1
51	DATE: 8/10/99	TITLE: "B"/TRAP/230/MET/RES/NPT	REV: 1/2-1
52	DATE: 8/10/99	TITLE: "B"/TRAP/230/MET/RES/NPT	REV: 1/2-1
53	DATE: 8/10/99	TITLE: "B"/TRAP/230/MET/RES/NPT	REV: 1/2-1
54	DATE: 8/10/99	TITLE: "B"/TRAP/230/MET/RES/NPT	REV: 1/2-1
55	DATE: 8/10/99	TITLE: "B"/TRAP/230/MET/RES/NPT	REV: 1/2-1
56	DATE: 8/10/99	TITLE: "B"/TRAP/230/MET/RES/NPT	REV: 1/2-1
57	DATE: 8/10/99	TITLE: "B"/TRAP/230/MET/RES/NPT	REV: 1/2-1
58	DATE: 8/10/99	TITLE: "B"/TRAP/230/MET/RES/NPT	REV: 1/2-1
59	DATE: 8/10/99	TITLE: "B"/TRAP/230/MET/RES/NPT	REV: 1/2-1
60	DATE: 8/10/99	TITLE: "B"/TRAP/230/MET/RES/NPT	REV: 1/2-1
61	DATE: 8/10/99	TITLE: "B"/TRAP/230/MET/RES/NPT	REV: 1/2-1
62	DATE: 8/10/99	TITLE: "B"/TRAP/230/MET/RES/NPT	REV: 1/2-1
63	DATE: 8/10/99	TITLE: "B"/TRAP/230/MET/RES/NPT	REV: 1/2-1
64	DATE: 8/10/99	TITLE: "B"/TRAP/230/MET/RES/NPT	REV: 1/2-1
65	DATE: 8/10/99	TITLE: "B"/TRAP/230/MET/RES/NPT	REV: 1/2-1
66	DATE: 8/10/99	TITLE: "B"/TRAP/230/MET/RES/NPT	REV: 1/2-1
67	DATE: 8/10/99	TITLE: "B"/TRAP/230/MET/RES/NPT	REV: 1/2-1
68	DATE: 8/10/99	TITLE: "B"/TRAP/230/MET/RES/NPT	REV: 1/2-1
69	DATE: 8/10/99	TITLE: "B"/TRAP/230/MET/RES/NPT	REV: 1/2-1
70	DATE: 8/10/99	TITLE: "B"/TRAP/230/MET/RES/NPT	REV: 1/2-1
71	DATE: 8/10/99	TITLE: "B"/TRAP/230/MET/RES/NPT	REV: 1/2-1
72	DATE: 8/10/99	TITLE: "B"/TRAP/230/MET/RES/NPT	REV: 1/2-1
73	DATE: 8/10/99	TITLE: "B"/TRAP/230/MET/RES/NPT	REV: 1/2-1
74	DATE: 8/10/99	TITLE: "B"/TRAP/230/MET/RES/NPT	REV: 1/2-1
75	DATE: 8/10/99	TITLE: "B"/TRAP/230/MET/RES/NPT	REV: 1/2-1
76	DATE: 8/10/99	TITLE: "B"/TRAP/230/MET/RES/NPT	REV: 1/2-1
77	DATE: 8/10/99	TITLE: "B"/TRAP/230/MET/RES/NPT	REV: 1/2-1
78	DATE: 8/10/99	TITLE: "B"/TRAP/230/MET/RES/NPT	REV: 1/2-1
79	DATE: 8/10/99	TITLE: "B"/TRAP/230/MET/RES/NPT	REV: 1/2-1
80	DATE: 8/10/99	TITLE: "B"/TRAP/230/MET/RES/NPT	REV: 1/2-1
81	DATE: 8/10/99	TITLE: "B"/TRAP/230/MET/RES/NPT	REV: 1/2-1
82	DATE: 8/10/99	TITLE: "B"/TRAP/230/MET/RES/NPT	REV: 1/2-1
83	DATE: 8/10/99	TITLE: "B"/TRAP/230/MET/RES/NPT	REV: 1/2-1
84	DATE: 8/10/99	TITLE: "B"/TRAP/230/MET/RES/NPT	REV: 1/2-1
85	DATE: 8/10/99	TITLE: "B"/TRAP/230/MET/RES/NPT	REV: 1/2-1
86	DATE: 8/10/99	TITLE: "B"/TRAP/230/MET/RES/NPT	REV: 1/2-1
87	DATE: 8/10/99	TITLE: "B"/TRAP/230/MET/RES/NPT	REV: 1/2-1
88	DATE: 8/10/99	TITLE: "B"/TRAP/230/MET/RES/NPT	REV: 1/2-1
89	DATE: 8/10/99	TITLE: "B"/TRAP/230/MET/RES/NPT	REV: 1/2-1
90	DATE: 8/10/99	TITLE: "B"/TRAP/230/MET/RES/NPT	REV: 1/2-1
91	DATE: 8/10/99	TITLE: "B"/TRAP/230/MET/RES/NPT	REV: 1/2-1
92	DATE: 8/10/99	TITLE: "B"/TRAP/230/MET/RES/NPT	REV: 1/2-1
93	DATE: 8/10/99	TITLE: "B"/TRAP/230/MET/RES/NPT	REV: 1/2-1
94	DATE: 8/10/99	TITLE: "B"/TRAP/230/MET/RES/NPT	REV: 1/2-1
95	DATE: 8/10/99	TITLE: "B"/TRAP/230/MET/RES/NPT	REV: 1/2-1
96	DATE: 8/10/99	TITLE: "B"/TRAP/230/MET/RES/NPT	REV: 1/2-1
97	DATE: 8/10/99	TITLE: "B"/TRAP/230/MET/RES/NPT	REV: 1/2-1
98	DATE: 8/10/99	TITLE: "B"/TRAP/230/MET/RES/NPT	REV: 1/2-1
99	DATE: 8/10/99	TITLE: "B"/TRAP/230/MET/RES/NPT	REV: 1/2-1
100	DATE: 8/10/99	TITLE: "B"/TRAP/230/MET/RES/NPT	REV: 1/2-1