

MOTOR DATA @ 230 VAC (TRAP)

MOTOR PARAMETERS	UNITS	VALUE
HORSEPOWER	HP	9.1
KILOWATTS	KW	6.8
MAX. OPERATING SPEED	N MAX	2700
SPEED @ RATED TORQUE	N RATED	2400
* CONTINUOUS RATED TORQUE @ 2400 RPM	IN-LBS [Nm]	238.0 [26.9]
* CONTINUOUS STALL TORQUE	IN-LBS [Nm]	280.0 [31.5]
CONTINUOUS LINE CURRENT	AMPS	35.4
PEAK TORQUE	IN-LBS [Nm]	840.0 [94.4]
PEAK CURRENT	AMPS	106.3
MAX. THEORETICAL ACCEL.	RAD/SEC ²	30,769
TORQUE SENSITIVITY	Kt [IN-LBS/AMP] [Nm/AMP]	7.9 [0.89]
BACK EMF (LINE TO LINE)	Vrms/Krpm	70.0
D.C. RESISTANCE (P-P)	OHMS	0.13
INDUCTANCE (P-P)	MILLIHENRIES	1.4
ROTOR INERTIA	Jm [IN-LBS-SEC ²] [Kg-M ²]	.0273 [0.0308]
STATIC FRICTION	Tf [IN-LBS] [Nm]	3.6 [.41]

*25C AMBIENT WITH A MAXIMUM CASE TEMPERATURE OF 100°C ON MOTOR. MOTOR MOUNTED ON A 12" X 12" X 1/2" ALUMINUM HEATSINK. THERMOSTAT IN STATOR WINDINGS WILL OPEN IF WINDING TEMPERATURE EXCEEDS 155°C. THIS ALLOWS FOR AN APPROXIMATE +10% HEADROOM IN THE CONTINUOUS TORQUE RATING BEFORE THERMOSTAT OPENS.

MECHANICAL NOTES:

1. AXIAL LOAD: 50 LBS MAX
2. RADIAL LOAD: 150 LBS MAX @ 1" FROM FACE
3. MOTOR SEALED TO IP65.
4. MOTOR WEIGHT: 65 LBS. [29.5 Kg]
5. MOTOR FINISH: BLACK EPOXY
6. MOTOR OUTPUT SHAFT: STAINLESS STEEL
7. MILLIMETERS (INCHES)

ENCODER: (290-00107)
OH48-4096P6-L6-5V

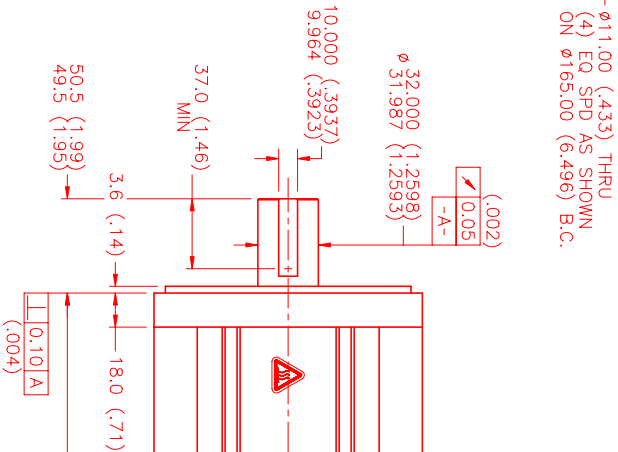
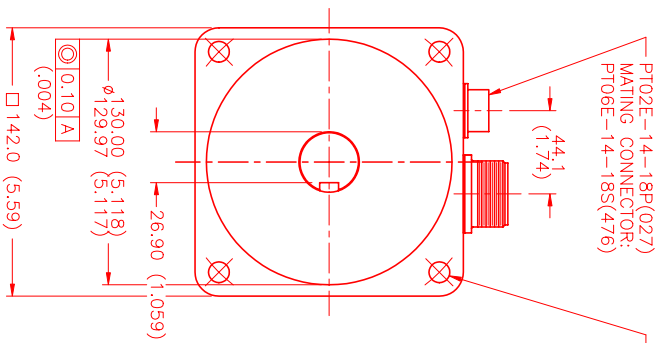
CONNECTION CHART

MOTOR CONNECTOR:
SG3102E-22-22P(027)
(270-00017)

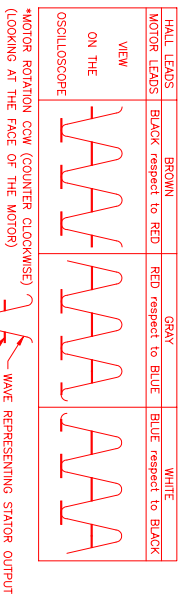
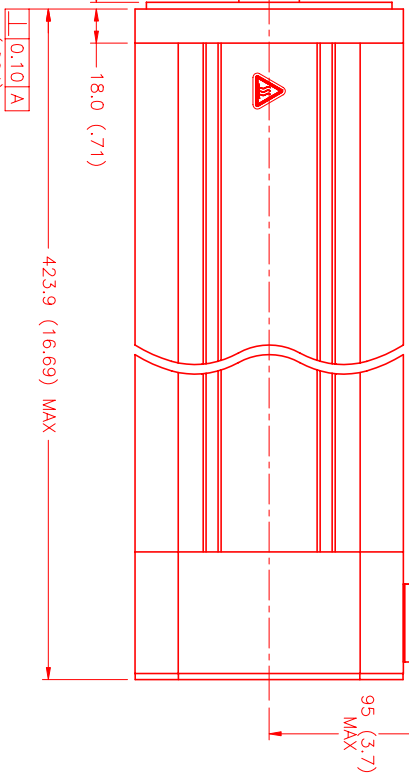
PIN	WIRE FUNCTION	WIRE COLOR
A	ΦR	RED
B	ΦS	BLACK
C	ΦT	BLUE
D	PE_GND	GRN/YEL

ENCODER/THERM CONNECTOR:
PT02E-14-18P(027)
(270-00024)

PIN	WIRE FUNCTION	WIRE COLOR
T	GROUND	BLACK
K	+5VDC	RED
B	CH A	BLUE
C	CH A	BLUE/BLK
N	CH B	GREEN
P	CH B	GRN/BLK
M	CH Z	YELLOW
U	CH Z	YEL/BLK
E	CH U	BROWN
R	CH U	BRN/BLK
F	CH V	GRAY
S	CH V	GRAY/BLK
G	CH W	WHITE
H	CH W	WHT/BLK
D	GND/CABLE SHLD	BLACK
A	THERM	BLACK
L	THERM	BLACK
J	GND	GRN/YEL

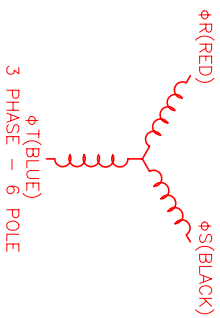


SG3102E-22-22P(027)
MATING CONNECTOR:
SG3106E-22-22S(476)



MOTOR & HALL POSITION CHART

HALL LEADS	BROWN	GRAY	WHITE
MOTOR LEADS	BLACK respect to RED	RED respect to BLUE	BLUE respect to BLACK



NO.	PART NUMBER	DESCRIPTION	QTY
1	MPM1423ATG7JZ1N	MOTOR	1

DESIGNER: MTS	DATE: 10/25/01
CHECKED: MTS	DATE: 10/25/01
APPROVED: MTS	DATE: 10/25/01

REV	DESCRIPTION	DATE	APPD.
PRELIMINARY		10/25/01	AJS