

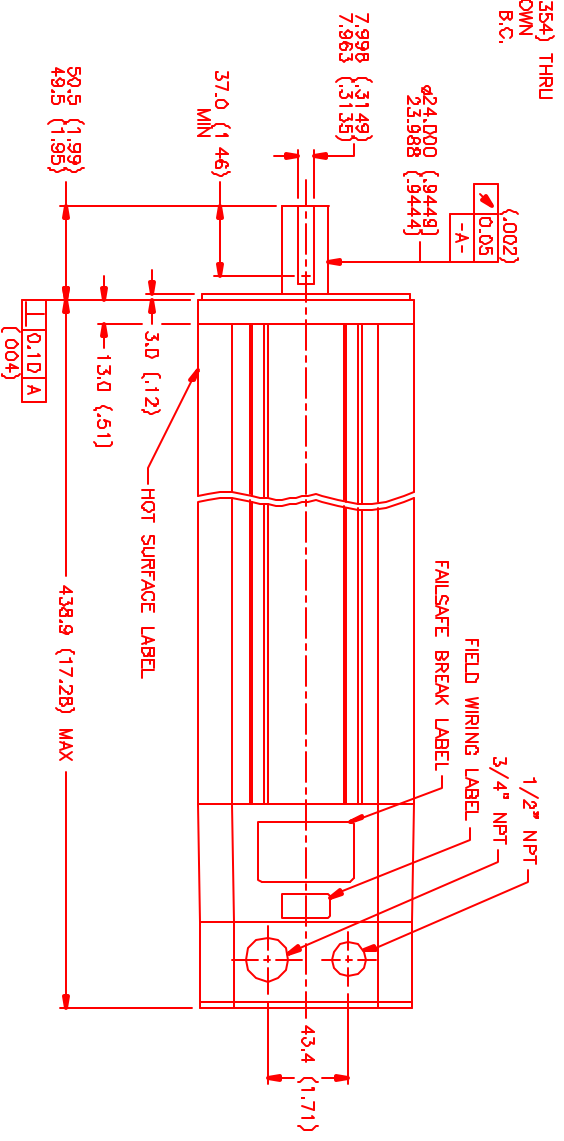
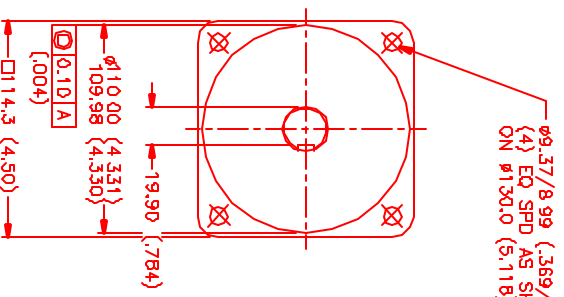
⊙ MOTOR DATA @ 460 VAC (TRAP)

MOTOR PARAMETERS	UNITS	VALUE
HORSEPOWER	HP	4.6
KILOWATTS	KW RATED	3.4
MAX. OPERATING SPEED	N MAX	4200
SPEED @ RATED TORQUE	RPM	3000
* CONTINUOUS RATED TORQUE	IN-LBS [Nm]	96.8 [10.8]
* CONTINUOUS STALL TORQUE	IN-LBS [Nm]	116.2 [13.1]
CONTINUOUS LINE CURRENT	AMPS	9.4
PEAK TORQUE	IN-LBS [Nm]	406.7 [45.7]
PEAK CURRENT	AMPS	32.8
MAX. THEORETICAL ACCEL	RAD/SEC <sup>2</sup>	41,081
TORQUE SENSITIVITY	K IN-LBS/AMF [Nm/AMP]	12.4 [1.42]
BACK EMF (LINE TO LINE)	Vrms/Krpm	110.0
D.C. RESISTANCE (P-P)	OHMS	.95
INDUCTANCE (P-P)	MILLIHENRIES	8.0
ROTOR INERTIA W/BRAKE	Jm [IN-LBS-SEC <sup>2</sup> ] Kg-M <sup>2</sup>	.00991 [0.012]
STATIC FRICTION	Tl [IN-LBS] [Nm]	1.8 [2]

\*25°C AMBIENT WITH A MAXIMUM CASE TEMPERATURE OF 100°C ON MOTOR. MOTOR MOUNTED ON A 12" X 12" X 1/2" ALUMINUM HEATSINK. THERMOSTAT IN STATOR WINDINGS WILL OPEN IF WINDING TEMPERATURE EXCEEDS 155°C. THIS ALLOWS FOR AN APPROXIMATE +10% HEADROOM IN THE CONTINUOUS TORQUE RATING BEFORE THERMOSTAT OPENS.

- MECHANICAL NOTES:
- AXIAL LOAD: 50 LBS MAX
  - RADIAL LOAD: 100 LBS MAX @ 1" FROM FACE
  - MOTOR SEALED TO IP65.
  - MOTOR WEIGHT: 42.4 LBS. [19.2 Kg]
  - MOTOR FINISH: BLACK EPOXY
  - MOTOR OUTPUT SHAFT: STAINLESS STEEL
  - MILLIMETERS (INCHES)

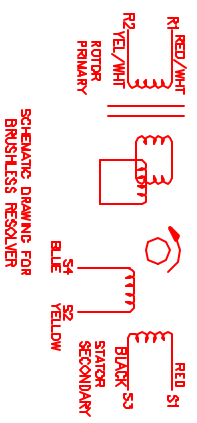
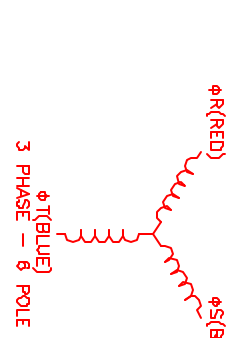
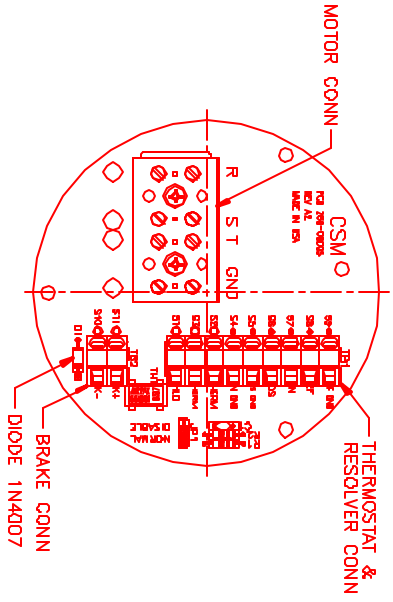
FAILSAFE BRAKE:  
MIN HOLDING TORQUE: 240 IN-LBS  
INPUT VOLTAGE: 24 VOLTS



CONNECTION CHART

MOTOR WIRE LEADS	WIRE FUNCTION	WIRE COLOR
RES	RES SHLD	GRN/YEL
S1	RES SHLD	GRN/YEL
S2	THERM	BLACK
S3	THERM	BLACK
S4	SIN GND	BLUE
S5	COS GND	BLACK
S6	COS	RED
S7	SIN	YELLOW
S8	REF	RED/WHI
S9	REF GND	YEL/WHI
S10	BRK (-)	BLUE
S11	BRK (+)	BLUE

RES/THERM/BRK WIRE LEADS	WIRE FUNCTION	WIRE COLOR
RES	RES SHLD	GRN/YEL
S1	RES SHLD	GRN/YEL
S2	THERM	BLACK
S3	THERM	BLACK
S4	SIN GND	BLUE
S5	COS GND	BLACK
S6	COS	RED
S7	SIN	YELLOW
S8	REF	RED/WHI
S9	REF GND	YEL/WHI
S10	BRK (-)	BLUE
S11	BRK (+)	BLUE



REV	REVISION	DATE	APP'D.
1	PRELIMINARY	9/17/01	AJS
A	E.C.O. - 2023	4/3/02	AJS

NO.	PART NUMBER	DESCRIPTION	QTY.
1	MPM1143CTJG3R	MPS Systems Corporation Automation Division	1

TITLE: 460V/RES/NET/NPT/BRK  
 DATE: 9/17/01  
 DRAWN: AJS  
 APPROVED: [Signature]  
 PART NUMBER: MPM1143CTJG3R  
 QUANTITY: 1/21