

MOTOR DATA @ 230 VAC (TRAP)

MOTOR PARAMETERS	UNITS	VALUE
HORSEPOWER	HP RATED	2.4
KILOWATTS	KW RATED	1.8
MAX. OPERATING SPEED	N MAX	2100
SPEED @ RATED TORQUE	RPM	1500
* CONTINUOUS RATED TORQUE @ 1500 RPM	IN-LBS [Nm]	104.0 [11.7]
* CONTINUOUS STALL TORQUE	IN-LBS [Nm]	116.2 [13.1]
CONTINUOUS LINE CURRENT	AMPS	9.4
PEAK CURRENT	AMPS	406.7 [45.7]
MAX. THEORETICAL ACCEL.	RAD/SEC ²	32.8
TORQUE SENSITIVITY	Kt [IN-LBS/AMP] [Nm/AMP]	41.081
BACK EMF (LINE TO LINE)	Vrms/Krpm	12.4 [1.42]
D.C. RESISTANCE (P-P)	OHMS	110.0
INDUCTANCE (P-P)	MIHLENRIES	1.1
ROTOR INERTIA W/BRAKE	Jm [IN-LBS-SEC ²] [Kg-M ²]	8.1
STATIC FRICTION	Tf [IN-LBS] [Nm]	.0099 [0.0112]

*25°C AMBIENT WITH A MAXIMUM CASE TEMPERATURE OF 100°C ON MOTOR. MOTOR MOUNTED ON A 12" X 12" X 1/2" ALUMINUM HEATSINK. THERMOSTAT IN STATOR WINDINGS WILL OPEN IF WINDING TEMPERATURE EXCEEDS 155°C. THIS ALLOWS FOR AN APPROXIMATE +10% HEADROOM IN THE CONTINUOUS TORQUE RATING BEFORE THERMOSTAT OPENS.

- MECHANICAL NOTES:**
- AXIAL LOAD: 50 LBS MAX
 - RADIAL LOAD: 100 LBS MAX @ 1" FROM FACE
 - MOTOR SEALED TO IP65.
 - MOTOR WEIGHT: 41.1 LBS. [18.6 kg]
 - MOTOR FINISH: BLACK EPOXY
 - MOTOR OUTPUT SHAFT: STAINLESS STEEL
 - INCHES (MILLIMETERS)

ENCODER: (290-00052)
 OIH48-2000P6-L6-5V
FAILSAFE BRAKE:
 MIN HOLDING TORQUE: 240 IN-LBS
 INPUT VOLTAGE: 24 VOLTS

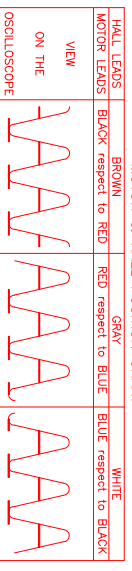
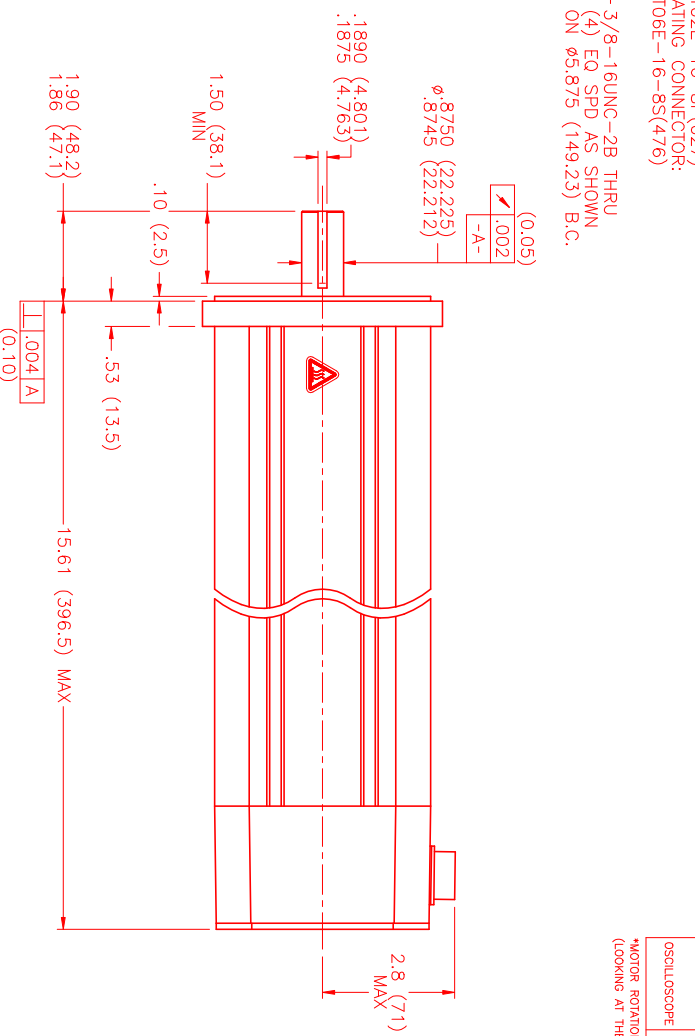
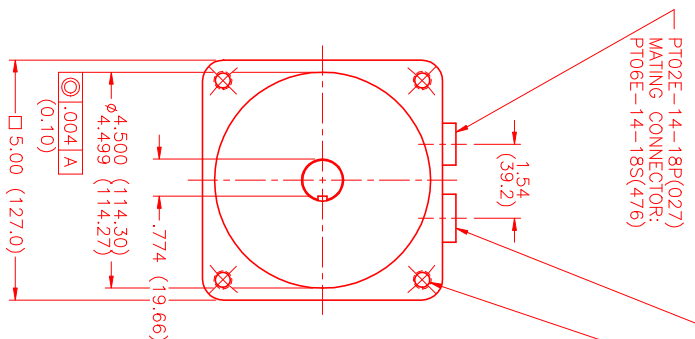
CONNECTION CHART

MOTOR/BRAKE CONNECTOR:
 PT02E-16-8P(027)
 (270-00032)

MOTOR/BRAKE	WIRE	WIRE LEADS
PIN	FUNCTION	WIRE COLOR
A	ΦR	RED
B	ΦS	BLACK
C	ΦT	BLUE
D	PE GND	GRN/YEL
E	BRK SHLD	—
F	BRK (+)	DIODE
G	BRK (-)	IN4007
H	—	—

ENCODER/THERM CONNECTOR:
 PT02E-14-18P(027)
 (270-00024)

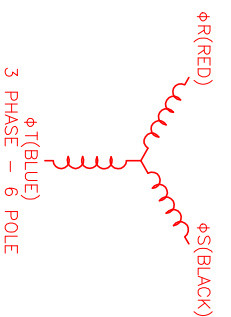
ENC/THERM	WIRE	WIRE LEADS
PIN	FUNCTION	WIRE COLOR
T	GROUND	BLACK
K	+5VDC	RED
B	CH A	BLUE
C	CH A \	BLUE/BLK
N	CH B	GREEN
P	CH B \	GRN/BLK
M	CH Z	YELLOW
U	CH Z \	YEL/BLK
E	CH U	BROWN
R	CH U \	BRN/BLK
F	CH V	GRAY
S	CH V \	GRAY/BLK
G	CH W	WHITE
H	CH W \	WHT/BLK
D	GND/CABLE	SHLD
A	THERM	BLACK
L	THERM	BLACK
J	GND	GRN/YEL



*MOTOR ROTATION C/W (COUNTER CLOCKWISE) (LOOKING AT THE FACE OF THE MOTOR)

MOTOR & HALL POSITION CHART

HALL LEADS	BROWN	GRAY	WHITE
MOTOR LEADS	BLACK respect to RED	RED respect to BLUE	BLUE respect to BLACK



NO.	PART NUMBER	DESCRIPTION	QTY.
UNLESS SPECIFIED			
DESIGNAL	XXX # 200		
REVISION	1		
DATE	7/20/99		
DESIGNED BY	MVS		
CHECKED BY			
APPROVED BY			
DATE	7/20/99		
SCALE	1/2:1		

MTS
 Automation Division

REV.	DESCRIPTION	DATE	APPD.
PRELIMINARY		7/20/99	MVS

MPM1143BTG6JN1R