

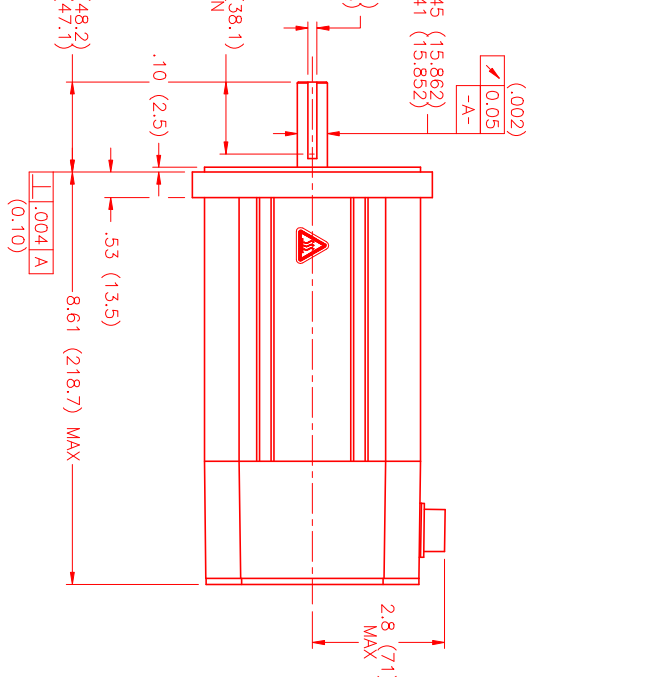
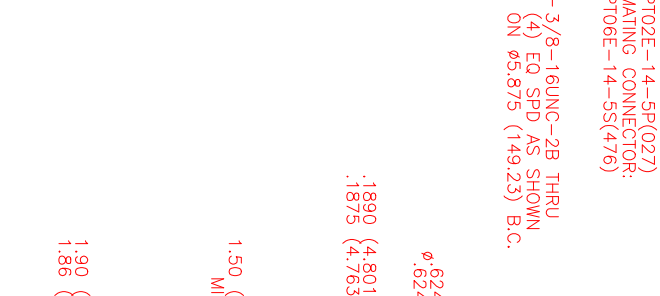
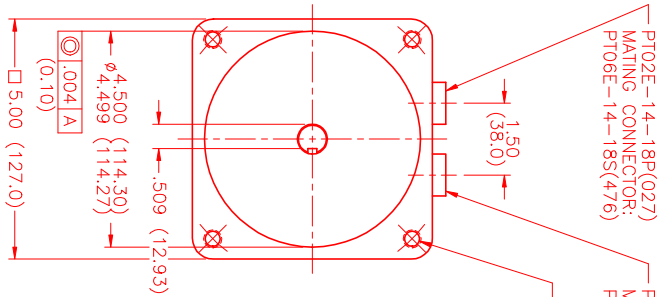
MOTOR DATA @ 230 VAC (TRAP)

MOTOR PARAMETERS	UNITS	VALUE
MOTOR HORSEPOWER	HP RATED	2.1
	KW	1.6
MAX. OPERATING SPEED	N MAX	4200
SPEED @ RATED TORQUE	RPM	3000
* CONTINUOUS RATED TORQUE @ 3000 RPM	IN-LBS [Nm]	45.0 [5.1]
* CONTINUOUS STALL TORQUE	IN-LBS [Nm]	54.0 [6.1]
CONTINUOUS LINE CURRENT	AMPS	8.7
PEAK TORQUE	IN-LBS [Nm]	189.1 [21.3]
PEAK CURRENT	AMPS	30.5
MAX. THEORETICAL ACCEL.	RAD/SEC ²	54,028
TORQUE SENSITIVITY	Kt [IN-LBS/AMP] [Nm/AMP]	6.2 [.71]
BACK EMF (LINE TO LINE)	Vrms/Krpm	55.0
D.C. RESISTANCE (P-P)	OHMS	.82
INDUCTANCE (P-P)	MILLIHENRIES	6.1
ROTOR INERTIA	Jm [IN-LBS-SEC ²] [Kg-M ²]	.0035 [0.00039]
STATIC FRICTION	Tf [IN-LBS] [Nm]	1.0 [.11]

*25°C AMBIENT WITH A MAXIMUM CASE TEMPERATURE OF 100°C ON MOTOR. MOTOR MOUNTED ON A 12" X 12" X 1/2" ALUMINUM HEATSINK. THERMOSTAT IN STATOR WINDINGS WILL OPEN IF WINDING TEMPERATURE EXCEEDS 155°C. THIS ALLOWS FOR AN APPROXIMATE +10% HEADROOM IN THE CONTINUOUS TORQUE RATING BEFORE THERMOSTAT OPENS.

MECHANICAL NOTES:

1. AXIAL LOAD: 50 LBS MAX
2. RADIAL LOAD: 100 LBS MAX @ 1" FROM FACE
3. MOTOR SEALED TO IP65.
4. MOTOR WEIGHT: 18.4 LBS. [8.3 kg]
5. MOTOR FINISH: BLACK EPOXY
6. MOTOR OUTPUT SHAFT: STAINLESS STEEL
7. INCHES (MILLIMETERS)



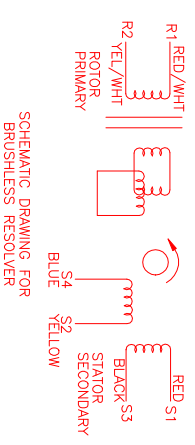
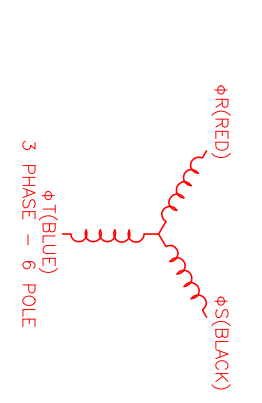
CONNECTION CHART

MOTOR CONNECTOR:
PT02E-14-5P(027)
(270-00026)

MOTOR WIRE LEADS	WIRE FUNCTION	WIRE COLOR
A	ΦR	RED
B	ΦS	BLACK
C	ΦT	BLUE
D	PE GND	GRN/YEL
E	-	-

RESOLVER/THERM CONNECTOR:
PT02E-14-18P(027)
(270-00024)

RES/THERM WIRE LEADS	WIRE FUNCTION	WIRE COLOR
U	THERM	BLACK
N	THERM	BLACK
H	SIN	YELLOW
G	COS GND	BLACK
S	COS	RED
F	SIN GND	BLUE
R	REF GND	YEL/WHI
E	REF	RED/WHI
D	RES SHLD	GRN/YEL
P	GND	GRN/YEL
A	-	-
B	-	-
C	-	-
J	-	-
K	-	-
L	-	-
M	-	-
T	-	-



SCHEMATIC DRAWING FOR BRUSHLESS RESOLVER

DATE: 1/14/00
DRAWING NUMBER: MPM1141ATG6C1N

REV.	DESCRIPTION	DATE	APPD.
1	PRELIMINARY	1/14/00	LIN

NO.	PART NUMBER	DESCRIPTION	QTY.
UNLESS SPECIFIED			
DRAWN: JMS			
CHECKED: MVS			
DATE: 1/8/99			
TITLE: "A" /TRAP /230/ENG /RES/CONN			
MATERIAL:			
APPROVED:			
DRAWING NUMBER: MPM1141ATG6C1N			
SCALE: 1/2:1			

MTS
Automation Division

RESOLVER ASSEMBLY FOR 230VAC MOTOR. SEE DRAWING FOR DIMENSIONS AND CONNECTIONS. THIS DRAWING IS THE PROPERTY OF MTS. IT IS TO BE USED ONLY FOR THE PURPOSES SPECIFIED. IT IS NOT TO BE REPRODUCED OR TRANSMITTED IN ANY FORM OR BY ANY MEANS, ELECTRONIC OR MECHANICAL, INCLUDING PHOTOCOPYING, RECORDING, OR BY ANY INFORMATION STORAGE AND RETRIEVAL SYSTEM.