
230 Series
TORQUE RANGE: 38-116.2 IN-LBS
4.3-13.1 Nm
Motor Data (Trap)

Motor Parameters		Units	1140ATG****	1140BTG****	1141ATG****	1141BTG****
Horsepower	Hp Rated	Hp	1.3	.76	2.1	1.2
Kilowatts	KW Rated	KW	1.0	.56	1.6	.88
Max. Operating Speed	N Max	RPM	3800	1900	4200	2100
Speed @ Rated Torque	N Rated	RPM	3000	1400	3000	1500
*Continuous Rated Torque @ Rated Speed		IN-LBS[Nm]	28.0[3.2]	34.0[3.8]	45.0[5.1]	50.0[5.6]
*Continuous Stall Torque		IN-LBS[Nm]	38.0[4.3]	38.0[4.3]	54.0[6.1]	54.0[6.1]
Continuous Line Current		AMPS	6.0	3.0	8.7	4.4
Peak Torque	Tpk	IN-LBS[Nm]	114.0[12.9]	114.0[12.9]	189.0[21.3]	189.0[21.3]
Peak Current		AMPS	18.0	9.0	30.5	15.3
Max. Theoretical Accel.		RAD/SEC ²	60,000	60,000	54,000	54,000
Torque Sensitivity	Kt	IN-LBS/AMP[Nm/AMP]	6.2[.71]	12.4[1.40]	6.2[0.71]	12.4[1.40]
Back EMF (Line to Line)	±10%	Vrms/Krpm	55.0	110.0	55.0	110.0
D.C. Resistance (P-P)	±10%	OHMS	3.2	13.1	.82	3.3
Inductance (P-P)	±10%	MILLIHENRIES	15.3	64.6	6.1	24.4
Rotor Inertia	Jm	IN-LBS-SEC ² [Kg-M ²]	.0019[.00021]	.0019[.00021]	.0035[.00039]	.0035[.00039]
Static Friction	Tf	IN-LBS[Nm]	.8[.09]	.8[.09]	1.0[0.11]	1.0[0.11]
Motor Weight		LBS[Kg]	13.2[6.0]	13.2[6.0]	19.4[8.8]	19.4[8.8]
Line Voltage		VAC	230	230	230	230

Motor Parameters		Units	1142ATG****	1142BTG****	1143ATG****	1143BTG****
Horsepower	Hp Rated	Hp	3.3	1.8	4.6	2.4
Kilowatts	KW Rated	KW	2.5	1.3	3.4	1.8
Max. Operating Speed	N Max	RPM	4200	2100	4200	2100
Speed @ Rated Torque	N Rated	RPM	3000	1500	3000	1500
*Continuous Rated Torque @ Rated Speed		IN-LBS[Nm]	69.1[7.8]	75.0[8.4]	96.8[10.9]	104.0[11.7]
*Continuous Stall Torque		IN-LBS[Nm]	83.0[9.3]	83.0[9.3]	116.2[13.1]	116.2[13.1]
Continuous Line Current		AMPS	13.4	6.7	18.7	9.4
Peak Torque	Tpk	IN-LBS[Nm]	290.5[32.7]	290.5[32.7]	406.7[45.7]	406.7[45.7]
Peak Current		AMPS	46.8	23.4	65.6	32.8
Max. Theoretical Accel.		RAD/SEC ²	44,015	44,015	42,811	42,811
Torque Sensitivity	Kt	IN-LBS/AMP[Nm/AMP]	6.2[0.71]	12.4[1.40]	6.2[0.71]	12.4[1.40]
Back EMF (Line to Line)	±10%	Vrms/Krpm	55.0	110.0	55.0	110.0
D.C. Resistance (P-P)	±10%	OHMS	.40	1.8	.27	1.1
Inductance (P-P)	±10%	MILLIHENRIES	2.8	12.6	2.0	8.1
Rotor Inertia	Jm	IN-LBS-SEC ² [Kg-M ²]	.0066[.00074]	.0066[.00074]	.0095[.00107]	.0095[.00107]
Static Friction	Tf	IN-LBS[Nm]	1.4[0.16]	1.4[0.16]	1.8[0.2]	1.8[0.2]
Motor Weight		LBS[Kg]	27.6[12.5]	27.6[12.5]	37.0[16.8]	37.0[16.8]
Line Voltage		VAC	230	230	230	230

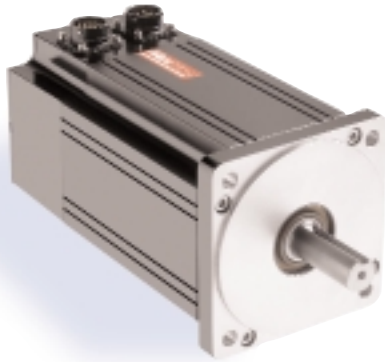
Brake Info:

Min. Holding Torque: 240 IN-LBS
Input Voltage: 24VDC
Current : .88 AMPS
Inertia : .000412 IN-LB-SEC²
Weight Adder: 6 LBS

*25° C Ambient with a maximum case temperature of 100° C on motor. Motor mounted on a 12" x 12" x 1/2" aluminum heatsink. Thermostat in stator windings will open if winding temperature exceeds 155° C. This allows +10% headroom in the continuous torque rating before thermostat opens.

Mechanical Notes:

1. Axial Load: 50 LBS. Max.
2. Radial Load: 100 LBS. Max. @ 1" from face
3. Motor Sealed to IP65


230 Series
TORQUE RANGE: 38-116.2 IN-LBS
4.3-13.1 Nm
Motor Data (Sine)

Motor Parameters		Units	1140ASG****	1140BSG****	1141ASG****	1141BSG****
Horsepower	Hp Rated	Hp	1.3	.76	2.1	1.2
Kilowatts	KW Rated	KW	1.0	.56	1.60	.88
Max. Operating Speed	N Max	RPM	3800	1900	4200	2100
Speed @ Rated Torque	N Rated	RPM	3000	1400	3000	1500
*Continuous Rated Torque @ Rated Speed		IN-LBS[Nm]	28.0[3.2]	34.0[3.8]	45.0[5.1]	50.0[5.6]
*Continuous Stall Torque		IN-LBS[Nm]	38.0[4.3]	38.0[4.3]	54.0[6.1]	54.0[6.1]
Continuous Line Current		AMPS(RMS/φ)	4.2	2.1	6.2	3.1
Peak Torque	Tpk	IN-LBS[Nm]	114.0[12.9]	114.0[12.9]	189.0[21.3]	189.0[21.3]
Peak Current		AMPS(RMS/φ)	12.7	6.4	21.6	10.8
Max. Theoretical Accel.		RAD/SEC ²	60,000	60,000	54,000	54,000
Torque Sensitivity	Kt	IN-LBS/AMP(RMS/φ)[Nm/AMP(RMS/φ)]	8.8[.99]	17.5[1.98]	8.8[.99]	17.5[1.98]
Back EMF (Line to Line)	±10%	Vrms/Krpm	55.0	110.0	55.0	110.0
D.C. Resistance (P-P)	±10%	OHMS	3.2	13.1	0.83	3.3
Inductance (P-P)	±10%	MILLIHENRIES	15.3	64.6	6.1	24.4
Rotor Inertia	Jm	IN-LBS-SEC ² [Kg-M ²]	.0019[.00021]	.0019[.00021]	.0035[.00039]	.0035[.00039]
Static Friction	Tf	IN-LBS[Nm]	.8[.09]	.8[.09]	1.0[0.11]	1.0[0.11]
Motor Weight		LBS[Kg]	13.2[6.0]	13.2[6.0]	19.4[8.8]	19.4[8.8]
Line Voltage		VAC	230	230	230	230

Motor Parameters		Units	1142ASG****	1142BSG****	1143ASG****	1143BSG****
Horsepower	Hp Rated	Hp	3.3	1.8	4.6	2.4
Kilowatts	KW Rated	KW	2.5	1.33	3.4	1.8
Max. Operating Speed	N Max	RPM	4200	2100	4200	2100
Speed @ Rated Torque	N Rated	RPM	3000	1500	3000	1500
*Continuous Rated Torque @ Rated Speed		IN-LBS[Nm]	69.1[7.8]	75.0[8.4]	96.8[10.9]	104.0[11.7]
*Continuous Stall Torque		IN-LBS[Nm]	83.0[9.3]	83.0[9.3]	116.2[13.1]	116.2[13.1]
Continuous Line Current		AMPS(RMS/φ)	9.5	4.7	13.2	6.6
Peak Torque	Tpk	IN-LBS[Nm]	290.5[32.7]	290.5[32.7]	406.7[45.7]	406.7[45.7]
Peak Current		AMPS(RMS/φ)	33.1	16.5	46.4	23.2
Max. Theoretical Accel.		RAD/SEC ²	44,015	44,015	42,811	42,811
Torque Sensitivity	Kt	IN-LBS/AMP(RMS/φ)[Nm/AMP(RMS/φ)]	8.8[.99]	17.5[1.98]	8.8[.99]	17.5[1.98]
Back EMF (Line to Line)	±10%	Vrms/Krpm	55.0	110.0	55.0	110.0
D.C. Resistance (P-P)	±10%	OHMS	.40	1.8	.27	1.1
Inductance (P-P)	±10%	MILLIHENRIES	2.8	12.6	2.0	8.1
Rotor Inertia	Jm	IN-LBS-SEC ² [Kg-M ²]	.0066[.00074]	.0066[.00074]	.0095[.00107]	.0095[.00107]
Static Friction	Tf	IN-LBS[Nm]	1.4[0.16]	1.4[0.16]	1.8[0.2]	1.8[0.2]
Motor Weight		LBS[Kg]	27.6[12.5]	27.6[12.5]	37.0[16.8]	37.0[16.8]
Line Voltage		VAC	230	230	230	230

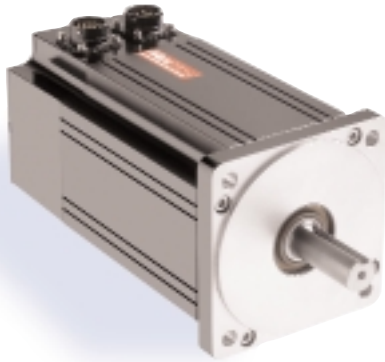
Brake Info:

Min. Holding Torque: 240 IN-LBS
Input Voltage: 24VDC
Current: .88 AMPS
Inertia: .000412 IN-LB-SEC²
Weight Adder: 6 LBS

*25° C Ambient with a maximum case temperature of 100° C on motor. Motor mounted on a 12" x 12" x 1/2" aluminum heatsink. Thermostat in stator windings will open if winding temperature exceeds 155° C. This allows +10% headroom in the continuous torque rating before thermostat opens.

Mechanical Notes:

1. Axial Load: 50 LBS. Max.
2. Radial Load: 100 LBS. Max. @ 1" from face
3. Motor Sealed to IP65


460 Series
TORQUE RANGE: 38-116.2 IN-LBS
4.3-13.1 Nm
Motor Data (Trap)

Motor Parameters		Units	1140CTJ****	1140DTJ****	1141CTJ****	1141DTJ****
Horsepower	Hp Rated	Hp	1.3	.76	2.1	1.2
Kilowatts	KW Rated	KW	1.0	.56	1.6	.88
Max. Operating Speed	N Max	RPM	3800	1900	4200	2100
Speed @ Rated Torque	N Rated	RPM	3000	1400	3000	1500
*Continuous Rated Torque @ Rated Speed		IN-LBS[Nm]	28.0[3.2]	34.0[3.8]	45.0[5.1]	50.0[5.6]
*Continuous Stall Torque		IN-LBS[Nm]	38.0[4.3]	38.0[4.3]	54.0[6.1]	54.0[6.1]
Continuous Line Current		AMPS	3.0	1.5	4.4	2.2
Peak Torque	Tpk	IN-LBS[Nm]	114.0[12.9]	114.0[12.9]	189.0[21.3]	189.0[21.3]
Peak Current		AMPS	9.0	4.5	15.3	7.6
Max. Theoretical Accel.		RAD/SEC ²	60,000	60,000	54,000	54,000
Torque Sensitivity		Kt	12.4[1.40]	24.7[2.79]	12.4[1.40]	24.7[2.79]
Back EMF (Line to Line)		±10% Vrms/Krpm	110.0	220.0	110.0	220.0
D.C. Resistance (P-P)		±10% OHMS	12.0	49.0	3.2	13.3
Inductance (P-P)		±10% MILLIHENRIES	64.0	255.0	24.0	99.0
Rotor Inertia		Jm	.0019[.00021]	.0019[.00021]	.0035[.00039]	.0035[.00039]
Static Friction		Tf	8[.09]	.8[.09]	1.0[0.11]	1.0[0.11]
Motor Weight		LBS[Kg]	13.2[6.0]	13.2[6.0]	19.4[8.8]	19.4[8.8]
Line Voltage		VAC	460	460	460	460

Motor Parameters		Units	1142CTJ****	1142DTJ****	1143CTJ****	1143DTJ****
Horsepower	Hp Rated	Hp	3.3	1.8	4.6	2.4
Kilowatts	KW Rated	KW	2.5	1.3	3.4	1.8
Max. Operating Speed	N Max	RPM	4200	2100	4200	2100
Speed @ Rated Torque	N Rated	RPM	3000	1500	3000	1500
*Continuous Rated Torque @ Rated Speed		IN-LBS[Nm]	69.1[7.8]	75.0[8.4]	96.8[10.9]	104.0[11.7]
*Continuous Stall Torque		IN-LBS[Nm]	83.0[9.3]	83.0[9.3]	116.2[13.1]	116.2[13.1]
Continuous Line Current		AMPS	6.7	3.3	9.4	4.7
Peak Torque	Tpk	IN-LBS[Nm]	290.5[32.7]	290.5[32.7]	406.7[45.7]	406.7[45.7]
Peak Current		AMPS	23.4	11.7	32.8	16.4
Max. Theoretical Accel.		RAD/SEC ²	44,015	44,015	42,811	42,811
Torque Sensitivity		Kt	12.4[1.40]	24.7[2.79]	12.4[1.40]	24.7[2.79]
Back EMF (Line to Line)		±10% Vrms/Krpm	110.0	220.0	110.0	220.0
D.C. Resistance (P-P)		±10% OHMS	1.8	6.3	1.0	3.9
Inductance (P-P)		±10% MILLIHENRIES	12.1	47.4	7.8	29.6
Rotor Inertia		Jm	.0066[.00074]	.0066[.00074]	.0095[.00107]	.0095[.00107]
Static Friction		Tf	1.40[.16]	1.4[0.16]	1.8[0.2]	1.8[0.2]
Motor Weight		LBS[Kg]	27.6[12.5]	27.6[12.5]	37.0[16.8]	37.0[16.8]
Line Voltage		VAC	460	460	460	460

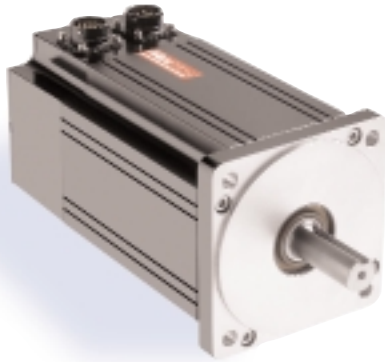
Brake Info:

Min. Holding Torque: 240 IN-LBS
Input Voltage: 24VDC
Current: .88 AMPS
Inertia: .000412 IN-LB-SEC²
Weight Adder: 6 LBS

*25° C Ambient with a maximum case temperature of 100° C on motor. Motor mounted on a 12" x 12" x 1/2" aluminum heatsink. Thermostat in stator windings will open if winding temperature exceeds 155° C. This allows +10% headroom in the continuous torque rating before thermostat opens.

Mechanical Notes:

1. Axial Load: 50 LBS. Max.
2. Radial Load: 100 LBS. Max. @ 1" from face
3. Motor Sealed to IP65


460 Series
TORQUE RANGE: 38-116.2 IN-LBS
4.3-13.1 Nm
Motor Data (Sine)

Motor Parameters		Units	1140CSJ****	1140DSJ****	1141CSJ****	1141DSJ****
Horsepower	Hp Rated	Hp	1.3	.76	2.1	1.2
Kilowatts	KW Rated	KW	1.0	.56	1.6	.88
Max. Operating Speed	N Max	RPM	3800	1900	4200	2100
Speed @ Rated Torque	N Rated	RPM	3000	1400	3000	1500
*Continuous Rated Torque @ Rated Speed		IN-LBS[Nm]	28.0[3.2]	34.0[3.8]	45.0[5.1]	50.0[5.6]
*Continuous Stall Torque		IN-LBS[Nm]	38.0[4.3]	38.0[4.3]	54.0[6.1]	54.0[6.1]
Continuous Line Current		AMPS(RMS/φ)	2.1	1.1	3.1	1.6
Peak Torque	Tpk	IN-LBS[Nm]	114.0[12.9]	114.0[12.9]	189.0[21.3]	189.0[21.3]
Peak Current		AMPS(RMS/φ)	6.4	3.2	10.8	5.4
Max. Theoretical Accel.		RAD/SEC ²	60,000	60,000	54,000	54,000
Torque Sensitivity		Kt IN-LBS/AMP(RMS/φ)[Nm/AMP(RMS/φ)]	17.5[1.98]	34.9[3.94]	17.5[1.98]	34.9[3.94]
Back EMF (Line to Line)		±10% Vrms/Krpm	110.0	222.0	110.0	220.0
D.C. Resistance (P-P)		±10% OHMS	12.0	49.0	3.2	13.3
Inductance (P-P)		±10% MILLIHENRIES	64.0	255.0	24.0	99.0
Rotor Inertia		Jm IN-LBS-SEC ² [Kg-M ²]	.0019[.00021]	.0019[.00021]	.0035[.00039]	.0035[.00039]
Static Friction		Tf IN-LBS[Nm]	.8[.09]	.8[.09]	1.0[0.11]	1.0[0.11]
Motor Weight		LBS[Kg]	13.2[6.0]	13.2[6.0]	19.4[8.8]	19.4[8.8]
Line Voltage		VAC	460	460	460	460

Motor Parameters		Units	1142CSJ****	1142DSJ****	1143CSJ****	1143DSJ****
Horsepower	Hp Rated	Hp	3.3	1.8	4.6	2.4
Kilowatts	KW Rated	KW	2.5	1.3	3.4	1.8
Max. Operating Speed	N Max	RPM	4200	2100	4200	2100
Speed @ Rated Torque	N Rated	RPM	3000	1500	3000	1500
*Continuous Rated Torque @ Rated Speed		IN-LBS[Nm]	69.1[7.8]	75.0[8.4]	96.8[10.9]	104.0[11.7]
*Continuous Stall Torque		IN-LBS[Nm]	83.0[9.3]	83.0[9.3]	116.2[13.1]	116.2[13.1]
Continuous Line Current		AMPS(RMS/φ)	4.7	2.3	6.6	3.3
Peak Torque	Tpk	IN-LBS[Nm]	290.5[32.7]	290.5[32.7]	406.7[45.7]	406.7[45.7]
Peak Current		AMPS(RMS/φ)	16.5	8.3	23.2	11.6
Max. Theoretical Accel.		RAD/SEC ²	44,015	44,015	42,811	42,811
Torque Sensitivity		Kt IN-LBS/AMP(RMS/φ)[Nm/AMP(RMS/φ)]	17.5[1.98]	34.9[3.94]	17.5[1.98]	34.9[3.94]
Back EMF (Line to Line)		±10% Vrms/Krpm	110.0	220.0	110.0	220.0
D.C. Resistance (P-P)		±10% OHMS	1.8	6.3	1.0	3.9
Inductance (P-P)		±10% MILLIHENRIES	12.1	47.4	7.8	29.6
Rotor Inertia		Jm IN-LBS-SEC ² [Kg-M ²]	.0066[.00074]	.0066[.00074]	.0095[.00107]	.0095[.00107]
Static Friction		Tf IN-LBS[Nm]	1.4[0.16]	1.4[0.16]	1.8[0.2]	1.8[0.2]
Motor Weight		LBS[Kg]	27.6[12.5]	27.6[12.5]	37.0[16.8]	37.0[16.8]
Line Voltage		VAC	460	460	460	460

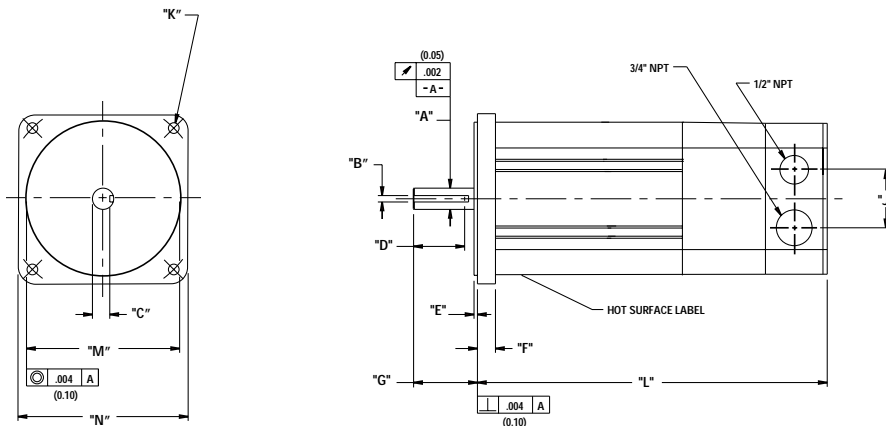
Brake Info:

Min. Holding Torque: 240 IN-LBS
Input Voltage: 24VDC
Current: .88 AMPS
Inertia: .000412 IN-LB-SEC²
Weight Adder: 6 LBS

*25° C Ambient with a maximum case temperature of 100° C on motor. Motor mounted on a 12" x 12" x 1/2" aluminum heatsink. Thermostat in stator windings will open if winding temperature exceeds 155° C. This allows +10% headroom in the continuous torque rating before thermostat opens.

Mechanical Notes:

1. Axial Load: 50 LBS. Max.
2. Radial Load: 100 LBS. Max. @ 1" from face
3. Motor Sealed to IP65



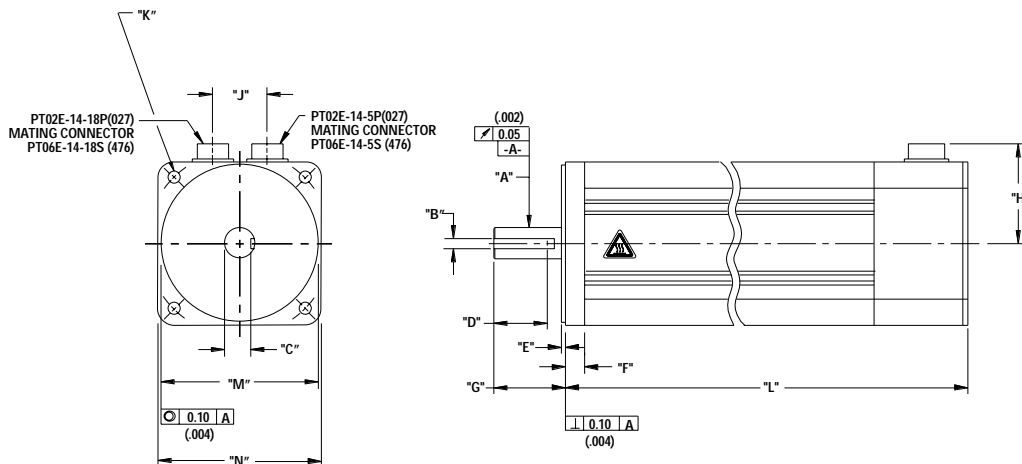
4" (114) English and Metric NPT Termination-Option 3 Motors

Model	"A"	"B"	"C"	"D"	"E"	"F"	"G"
MPM1140***6***	∅ .6245 (15.862) .6241 (15.852)	.1890 (4.801) .1875 (4.763)	.509 (12.93)	1.5 (38.1) Min	.10 (2.5)	.53 (13.5)	1.90 (48.2) 1.86 (47.1)
MPM1140***7***	∅ 18.999 (.7480) 18.987 (.7475)	5.99 (.236) 5.97 (.235)	15.49 (.610)	37.0 (1.46) Min	3.0 (.12)	13.0 (.51)	50.5 (1.99) 49.5 (1.95)
MPM1141***6***	∅ .6245 (15.862) .6241 (15.852)	.1890 (4.801) .1875 (4.763)	.509 (12.93)	1.5 (38.1) Min	.10 (2.5)	.53 (13.5)	1.90 (48.2) 1.86 (47.1)
MPM1141***7***	∅ 18.999 (.7480) 18.987 (.7475)	5.99 (.236) 5.97 (.235)	15.49 (.610)	37.0 (1.46) Min	3.0 (.12)	13.0 (.51)	50.5 (1.99) 49.5 (1.95)
MPM1142***6***	∅ .8750 (22.225) .8745 (22.212)	.1890 (4.801) .1875 (4.763)	.774 (19.65)	1.5 (38.1) Min	.10 (2.5)	.53 (13.5)	1.90 (48.2) 1.86 (47.1)
MPM1142***7***	∅ 24.000 (.9449) 23.988 (.9444)	7.998 (.3149) 7.963 (.3135)	19.90 (.784)	37.0 (1.46) Min	3.0 (.12)	13.0 (.51)	50.5 (1.99) 49.5 (1.95)
MPM1143***6***	∅ .8750 (22.225) .8745 (22.212)	.1890 (4.801) .1875 (4.763)	.774 (19.65)	1.5 (38.1) Min	.10 (2.5)	.53 (13.5)	1.90 (48.2) 1.86 (47.1)
MPM1143***7***	∅ 24.000 (.9449) 23.988 (.9444)	7.998 (.3149) 7.963 (.3135)	19.90 (.784)	37.0 (1.46) Min	3.0 (.12)	13.0 (.51)	50.5 (1.99) 49.5 (1.95)

Model	"J"	"K"	"L"	"L" w/ Brake	"M"	"N"
MPM1140***6***	1.71 (43.4)	3/8-16 UNC-2B THRU (4) EQ SPD AS SHOWN ON Ø5.875 (149.23) B.C.	9.05 (229.9) Max	11.05 (280.7)	∅ 4.500 (114.30) 4.499 (114.27)	□ 5.00 (127.0)
MPM1140***7***	43.4 (1.71)	Ø9.18 (.362) THRU (4) EQ SPD AS SHOWN ON Ø130.00 (5.118) B.C.	229.4 (9.03) Max	280.2 (11.03)	∅ 110.00 (4.331) 109.98 (4.330)	□ 114.3 (4.50)
MPM1141***6***	1.71 (43.4)	3/8-16 UNC-2B THRU (4) EQ SPD AS SHOWN ON Ø5.875 (149.23) B.C.	10.30 (261.6) Max	12.30 (312.42)	∅ 4.500 (114.30) 4.499 (114.27)	□ 5.00 (127.0)
MPM1141***7***	43.4 (1.71)	Ø9.18 (.362) THRU (4) EQ SPD AS SHOWN ON Ø130.00 (5.118) B.C.	261.0 (10.28) Max	311.9 (12.28)	∅ 110.00 (4.331) 109.98 (4.330)	□ 114.3 (4.50)
MPM1142***6***	1.71 (43.4)	3/8-16 UNC-2B THRU (4) EQ SPD AS SHOWN ON Ø5.875 (149.23) B.C.	12.80 (325.1) Max	14.80 (375.92)	∅ 4.500 (114.30) 4.499 (114.27)	□ 5.00 (127.0)
MPM1142***7***	43.4 (1.71)	Ø9.18 (.362) THRU (4) EQ SPD AS SHOWN ON Ø130.00 (5.118) B.C.	324.5 (12.78) Max	375.4 (14.78)	∅ 110.00 (4.331) 109.98 (4.330)	□ 114.3 (4.50)
MPM1143***6***	1.71 (43.4)	3/8-16 UNC-2B THRU (4) EQ SPD AS SHOWN ON Ø5.875 (149.23) B.C.	15.30 (388.6) Max	17.30 (439.42)	∅ 4.500 (114.30) 4.499 (114.27)	□ 5.00 (127.0)
MPM1143***7***	43.4 (1.71)	Ø9.18 (.362) THRU (4) EQ SPD AS SHOWN ON Ø130.00 (5.118) B.C.	388.0 (15.28) max	438.9 (17.28)	∅ 110.00 (4.331) 109.98 (4.330)	□ 114.3 (4.50)

English = 6
Metric = 7

For Mechanical Dimensions on Termination Option 2 Consult Factory.



4" (114) English and Metric Connectorized Termination-Option 1 Motors

Model	"A"	"B"	"C"	"D"	"E"	"F"	"G"
MPM1140***6***	∅ .6245 (15.862) .6241 (15.852)	.1890 (4.801) .1875 (4.763)	.509 (12.93)	1.5 (38.1) Min	.10 (2.5)	.53 (13.5)	1.90 (48.2) 1.86 (47.1)
MPM1140***7***	∅ 18.999 (.7480) 18.987 (.7475)	5.99 (.236) 5.97 (.235)	15.49 (.610)	37.0 (1.46) Min	3.0 (.12)	13.0 (.51)	50.5 (1.99) 49.5 (1.95)
MPM1141***6***	∅ .6245 (15.862) .6241 (15.852)	.1890 (4.801) .1875 (4.763)	.509 (12.93)	1.5 (38.1) Min	.10 (2.5)	.53 (13.5)	1.90 (48.2) 1.86 (47.1)
MPM1141***7***	∅ 18.999 (.7480) 18.987 (.7475)	5.99 (.236) 5.97 (.235)	15.49 (.610)	37.0 (1.46) Min	3.0 (.12)	13.0 (.51)	50.5 (1.99) 49.5 (1.95)
MPM1142***6***	∅ .8750 (22.225) .8745 (22.212)	.1890 (4.801) .1875 (4.763)	.774 (19.65)	1.5 (38.1) Min	.10 (2.5)	.53 (13.5)	1.90 (48.2) 1.86 (47.1)
MPM1142***7***	∅ 24.000 (.9449) 23.988 (.9444)	7.998 (.3149) 7.963 (.3135)	19.90 (.784)	37.0 (1.46) Min	3.0 (.12)	13.0 (.51)	50.5 (1.99) 49.5 (1.95)
MPM1143***6***	∅ .8750 (22.225) .8745 (22.212)	.1890 (4.801) .1875 (4.763)	.774 (19.65)	1.5 (38.1) Min	.10 (2.5)	.53 (13.5)	1.90 (48.2) 1.86 (47.1)
MPM1143***7***	∅ 24.000 (.9449) 23.988 (.9444)	7.998 (.3149) 7.963 (.3135)	19.90 (.784)	37.0 (1.46) Min	3.0 (.12)	13.0 (.51)	50.5 (1.99) 49.5 (1.95)

Model	"H"	"J"	"K"	"L"	"L" w/ Brake	"M"	"N"
MPM1140***6***	2.8 (71) Max	1.5 (38.0)	3/8-16 UNC-2B THRU (4) EQ SPD AS SHOWN ON Ø5.875 (149.23) B.C.	7.36 (186.9) Max	9.36 (237.7)	∅ 4.500 (114.30) 4.499 (114.27)	□ 5.00 (127.0)
MPM1140***7***	71 (2.8) Max	38.0 (1.5)	Ø9.18 (.362) THRU (4) EQ SPD AS SHOWN ON Ø130.00 (5.118) B.C.	186.4 (7.34) Max	237.2 (9.34)	∅ 110.01 (4.331) 109.98 (4.330)	□ 114.3 (4.50)
MPM1141***6***	2.8 (71) Max	1.5 (38.0)	3/8-16 UNC-2B THRU (4) EQ SPD AS SHOWN ON Ø5.875 (149.23) B.C.	8.61 (218.7) Max	10.61 (269.5)	∅ 4.500 (114.30) 4.499 (114.27)	□ 5.00 (127.0)
MPM1141***7***	71 (2.8) Max	38.0 (1.5)	Ø9.18 (.362) THRU (4) EQ SPD AS SHOWN ON Ø130.00 (5.118) B.C.	218.2 (8.59) Max	269.0 (10.59)	∅ 110.01 (4.331) 109.98 (4.330)	□ 114.3 (4.50)
MPM1142***6***	2.8 (71) Max	1.5 (38.0)	3/8-16 UNC-2B THRU (4) EQ SPD AS SHOWN ON Ø5.875 (149.23) B.C.	11.11 (282.2) Max	13.11 (333.0)	∅ 4.500 (114.30) 4.499 (114.27)	□ 5.00 (127.0)
MPM1142***7***	71 (2.8) Max	38.0 (1.5)	Ø9.18 (.362) THRU (4) EQ SPD AS SHOWN ON Ø130.00 (5.118) B.C.	281.7 (11.09) Max	332.5 (13.09)	∅ 110.01 (4.331) 109.98 (4.330)	□ 114.3 (4.50)
MPM1143***6***	2.8 (71) Max	1.5 (38.0)	3/8-16 UNC-2B THRU (4) EQ SPD AS SHOWN ON Ø5.875 (149.23) B.C.	13.61 (345.7) Max	15.61 (396.5)	∅ 4.500 (114.30) 4.499 (114.27)	□ 5.00 (127.0)
MPM1143***7***	71 (2.8) Max	38.0 (1.5)	Ø9.18 (.362) THRU (4) EQ SPD AS SHOWN ON Ø130.00 (5.118) B.C.	345.2 (13.59) Max	396.0 (15.59)	∅ 110.01 (4.331) 109.98 (4.330)	□ 114.3 (4.50)

English = 6
Metric = 7

For Mechanical Dimensions on Termination Option 2 Consult Factory.

4" Motor with Encoder Feedback

Option 1

Motor Connector 270-00026 (PT02E-14-5P(027))

Pin	Function	Wire Color
A	ϕ R	RED
B	ϕ S	BLACK
C	ϕ T	BLUE
D	PE GND	GRN/YEL
E	-	-

Encoder Connector 270-00024 (PT02E-14-18P(027))

Pin	Function	Wire Color
T	GND	BLACK
K	+5VDC	RED
B	CH A	BLUE
C	CH A\	BLUE/BLK
N	CH B	GREEN
P	CH B\	GRN/BLK
M	CH Z	YELLOW
U	CH Z\	YEL/BLK
E	CH U	BROWN
R	CH U\	BRN/BLK
F	CH V	GRAY
S	CH V\	GRAY/BLK
G	CH W	WHITE
H	CH W\	WHT/BLK
D	GND/CABLE	SHLD
A	THERM	BLACK
L	THERM	BLACK
J	GND	GRN/YEL

Option 1 with brake

Motor Brake Connector 270-00032 (PT02E-16-8P(027))

Pin	Function	Wire Color
A	ϕ R	RED
B	ϕ S	BLACK
C	ϕ T	BLUE
D	PE GND	GRN/YEL
E	BRK SHLD	-
F	BRK (+)	DIODE
G	BRK (-)	1N4007
H	-	-

Option 3-Consult Factory

Option 2

Motor Brake Connector 270-00256 (BEGA089NN00000013000)

Pin	Function	Wire Color
1	ϕ R (U1)	RED
2	PE GND	GRN/YEL
3	ϕ T (W1)	BLUE
4	ϕ S (V1)	BLACK
*A	BRK (+)	DIODE
*B	BRK (-)	1N4007
C	THERM	BLACK
D	THERM	BLACK

*USE ONLY WITH BRAKE OPTION

Encoder Connector 270-00257 (AEGA052NN00000013000)

Pin	Function	Wire Color
1	GND (0V)	BLACK
2	CH A\ (A)	BLUE/BLK
3	CH A (A\)	BLUE
4	CH B (B)	GREEN
5	CH B\ (B\)	GRN/BLK
6	CH Z (Z)	YELLOW
7	CH Z\ (Z\)	YEL/BLK
8	+5V (+5V)	RED
9	-	-
10	CH U (RLG U)	BROWN
11	CH V (RLG V)	GRAY
12	CH W (RLG W)	WHITE

4" Motor with Resolver Feedback

Option 1

Motor Connector 270-00026 (PT02E-14-5P(027))

Pin	Function	Wire Color
A	ϕ R	RED
B	ϕ S	BLACK
C	ϕ T	BLUE
D	PE GND	GRN/YEL
E	-	-

Resolver Connector 270-00024 (PT02E-14-18P(027))

Pin	Function	Wire Color
U	THERM	BLACK
N	THERM	BLACK
H	SIN	YELLOW
G	COS GND	BLACK
S	COS	RED
F	SIN GND	BLUE
R	REF GND	YEL/WHT
E	REF	RED/WHT
D	RES SHLD	GRN/YEL
P	GND	GRN/YEL
A	-	-
B	-	-
C	-	-
J	-	-
K	-	-
L	-	-
M	-	-
T	-	-

* Option 1 with brake

Motor Brake Connector 270-00032 (PT02E-16-8P(027))

Pin	Function	Wire Color
A	ϕ R	RED
B	ϕ S	BLACK
C	ϕ T	BLUE
D	PE GND	GRN/YEL
E	BRK SHLD	-
F	BRK (+)	DIODE
G	BRK (-)	1N4007
H	-	-

Option 2

Motor Brake Connector 270-00256 (BEGA0589NN0000009000)

Pin	Function	Wire Color
1	ϕ R (U1)	RED
2	PE GND	GRN/YEL
3	ϕ T (W1)	BLUE
4	ϕ S (V1)	BLACK
*A	BRK (+)	DIODE
*B	BRK (-)	1N4007
C	THERM	BLACK
D	THERM	BLACK

* USE ONLY WITH BRAKE OPTION

Resolver Connector 270-00257 (AEGA052NN00000013000)

Pin	Function	Wire Color
1	-	-
2	REF (R1)	RED/WHT
3	REF GND (R2)	YEL/WHT
4	COS GND (S1)	BLACK
5	COS (S3)	RED
6	SIN (S2)	YELLOW
7	SIN GND (S4)	BLUE
8	-	-
9	-	-
10	-	-
11	-	-
12	-	-

Option 3

Connection Chart (NPT) Resolver

Terminal	Function	Wire Color	Terminal Block
1	ϕ R	RED	TB3 (MOTOR CONN)
2	ϕ S	BLACK	
3	ϕ T	BLUE	
4	PE GND	GRN/YEL	
*S11	BRK (+)	BLUE	TB2 (BRAKE CONN)
*S10	BRK (-)	BLUE	
S9	REF GND	YEL/WHT	TB1 (RESOLVER & THERM CONN)
S8	REF	RED/WHT	
S7	SIN	YELLOW	
S6	COS	RED	
S5	COS GND	BLACK	
S4	SIN GND	BLUE	
S3	THERM	BLACK	
S2	THERM	BLACK	
S1	RES SHLD	GRN/YEL	

* USE ONLY WITH BRAKE OPTION

