



Document Number:
File Name: SQL Express AppNote.doc
Date: 07/21/2008
Product: InteractX, SQL Express

Application Note

Associated Project:

Related Documents:

KEYWORDS

Database, InteractX, SQL Express

While precautions have been taken in the preparation of this note, CTC and the author assume no responsibility for errors or omissions. Neither is any liability assumed for damages resulting from the use of the information contained herein.

All data contained in this Application is valid as of the time of its writing: 10/16/2008. The data contained within is subject to change at any time. Since SQL Express is obtained through Microsoft's website, they can change or move links and invalidate this application note. This application note is only designed to get SQL Express installed on a machine and get InteractX to log records to a Database created in SQL Express. This is not a troubleshooting application note.

1. Please check your system to determine whether or not the pre-requisite applications are installed. If they are not already installed on your system, please visit the following links and install the SQL Server Express pre-requisite applications (.net 3.5, Windows Installer 4.5 and Windows PowerShell).

.net 3.5 SP1 Link: <http://www.microsoft.com/downloads/details.aspx?FamilyId=AB99342F-5D1A-413D-8319-81DA479AB0D7&displaylang=en> (Click the Download Link)

Windows Installer 4.5 Link: <http://www.microsoft.com/downloads/details.aspx?FamilyId=5A58B56F-60B6-4412-95B9-54D056D6F9F4&displaylang=en> be sure to select the correct version for your Operating System. Most of our customers are currently running Windows XP Service Pack 2 or 3 – If you are running XP SP 2 or 3 the appropriate file is:

WindowsXP-KB942288-v3-x86.exe	3.2 MB	Download
-------------------------------	--------	--------------------------

Windows PowerShell Link:

<http://www.microsoft.com/windowsserver2003/technologies/management/powershell/download.msp>

(Please select the version appropriate for your system – Again, most of our customers require the X86 version) This download will require Authentication of your O/S by Microsoft.

File:

Date: November 3, 2008

Page: 1



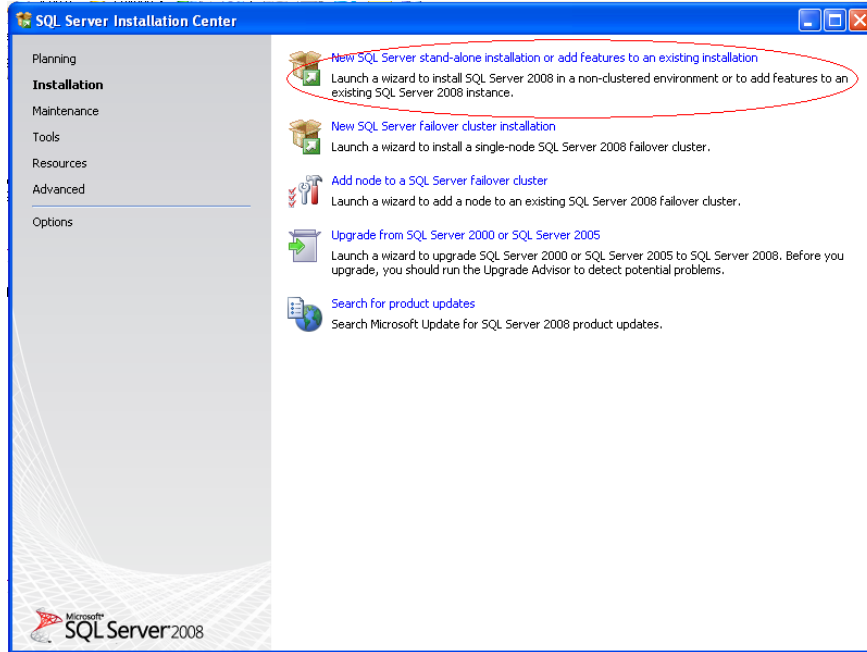
2. Once you have insured the pre-requisite software is installed, you can download the SQL Server Express installation from this Link: <http://www.microsoft.com/downloads/details.aspx?FamilyId=B5D1B8C3-FDA5-4508-B0D0-1311D670E336&displaylang=en> (Most of our customers require the X86 version – but install the appropriate version for your system) (Active as of 10/16/08 – Try a Search if the link has been moved). This link does not require registration.

The screenshot shows the Microsoft download page for SQL Server 2008 Express with Advanced Services in English. It includes a search bar at the top, a brief description, and a 'Download files below' section. Under 'Quick Details', the version is 10.00.1600.22, published on 8/22/2008, in English, with a download size of 502.7 MB - 1049.2 MB*. A language dropdown is set to English. The 'Overview' section states that this is a free, easy-to-use version of SQL Server Express that includes a graphical management tool and powerful features for reporting and advanced task-based searches. It is ideal for small server applications and local data stores. A bullet point lists: 'Easily manage and administer SQL Server 2008 Express with a easy-to-use graphical management tool - SQL Server 2008 Management Studio Basic.'

Select either the 64 Bit or X86 version as applicable for your machine: (Any Parker supplied system is currently X86, if you are running a 64 Bit O/S on a 3rd party system, please download the appropriate version.

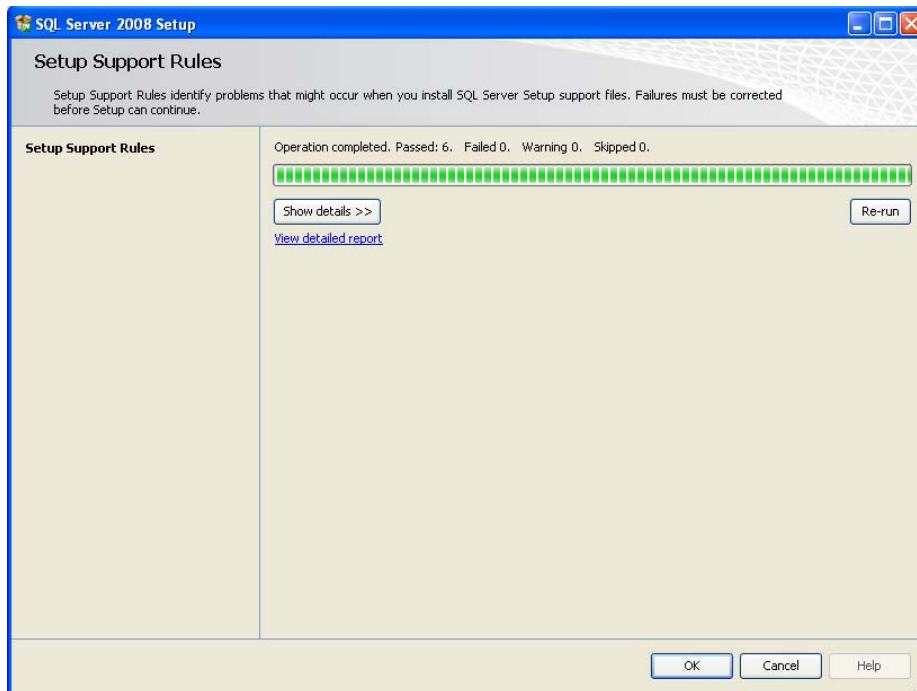
The screenshot shows the 'Files in This Download' section of the Microsoft download page. It contains a table with two columns: 'File Name' and 'File Size'. There are two entries: 'SQLEXPRAV_x64_ENU.exe' (546.5 MB) and 'SQLEXPRAV_x86_ENU.exe' (502.7 MB). Both entries have a 'Download' button next to them. Below the table, there are sections for 'Related Resources' (listing links to Microsoft SQL Server home page, developer center, and sample databases) and 'What Others Are Downloading' (listing various related software like Microsoft SQL Server 2008 Express, Windows Installer 4.5, and Visual Studio 2008).

3. Install SQL Express. (Double check the Pre-Requisites first) This installation includes the Database, the Management Studio and Reporting Capabilities. (It is a 500MB+ download)
4. Select the “New SQL Server stand-alone option.”



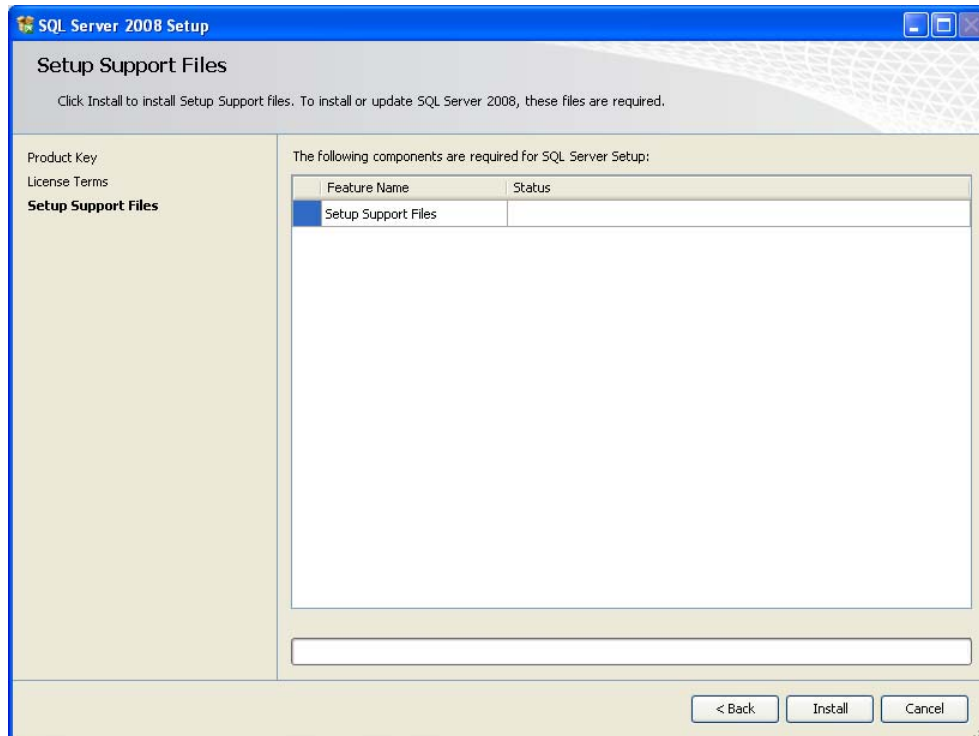
Follow the menus from the Microsoft install in order to install SQL Server Express with Advanced Tools.

5. The Setup Support Rules will run, and then choose OK.

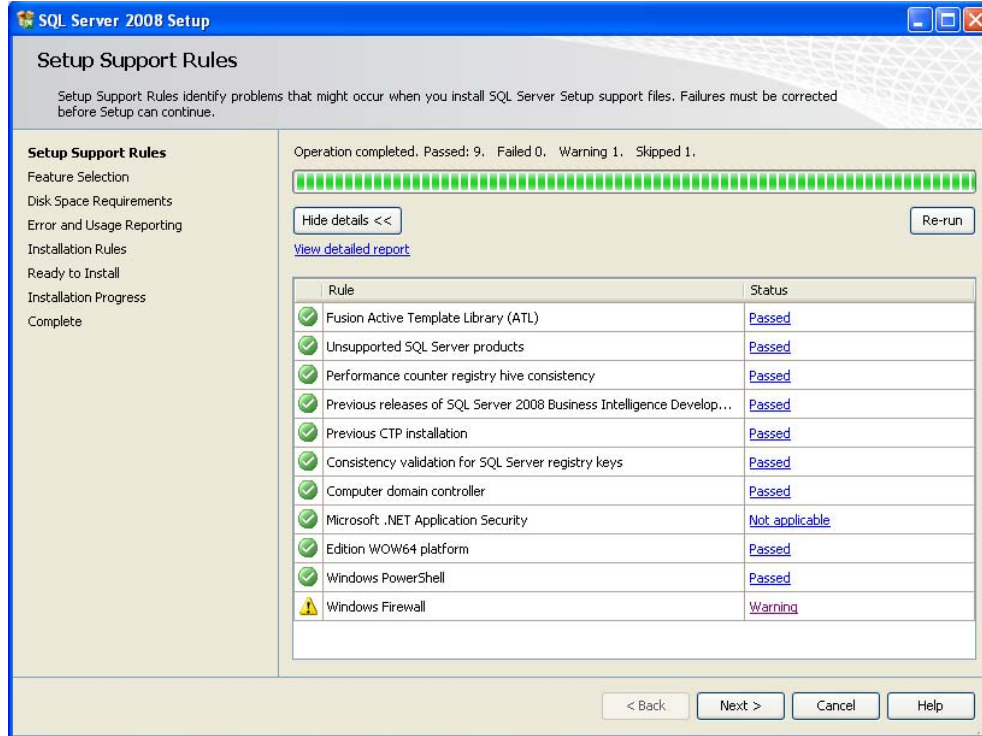




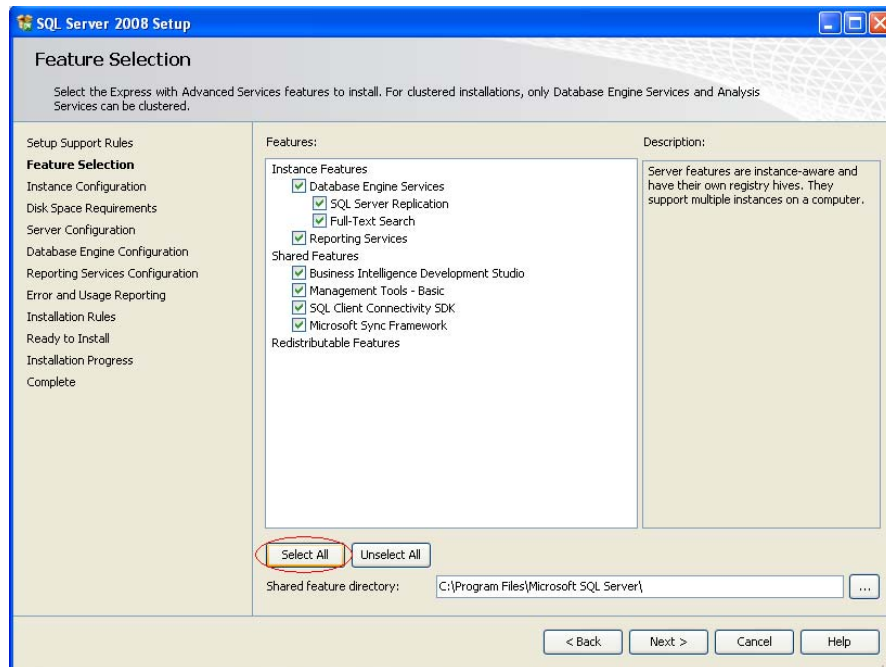
6. From the Product Key Window choose Next>
7. License Terms window will appear. Check the box for I accept and continue.
8. From the Setup Support Files Window choose Install. This will take a few moments.



9. Once complete you will see a Setup Support Rules window that may give a warning for the Windows Firewall (This is ok due to the fact ports may not be open to allow remote connections).



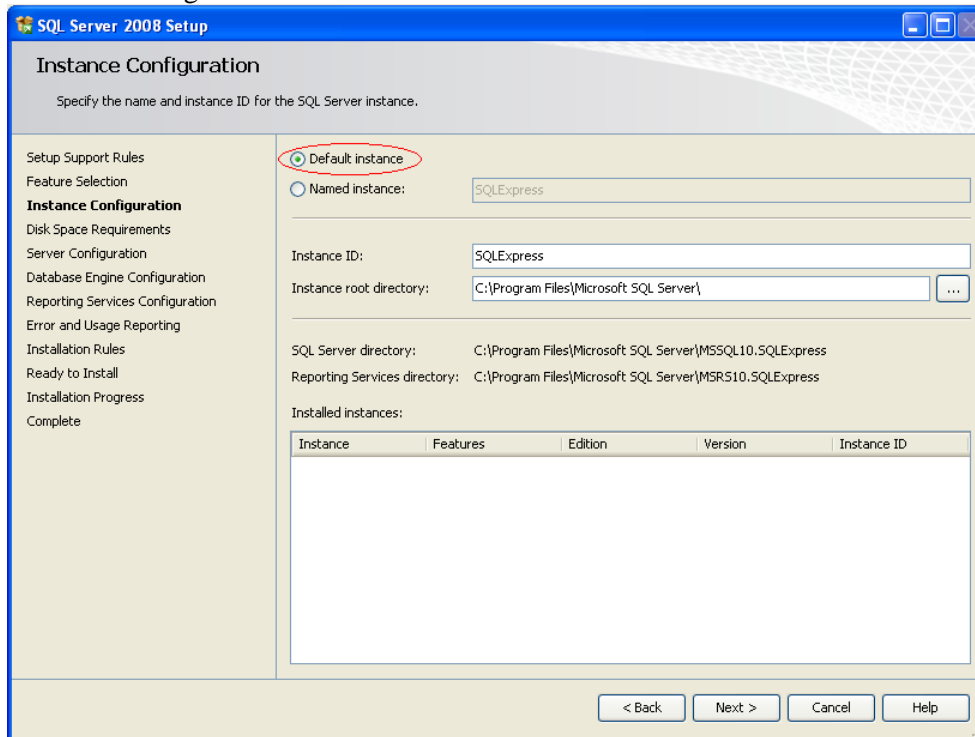
10. From the Feature Selection Window choose Select All then Next>



File:
Date: November 3, 2008
Page: 5

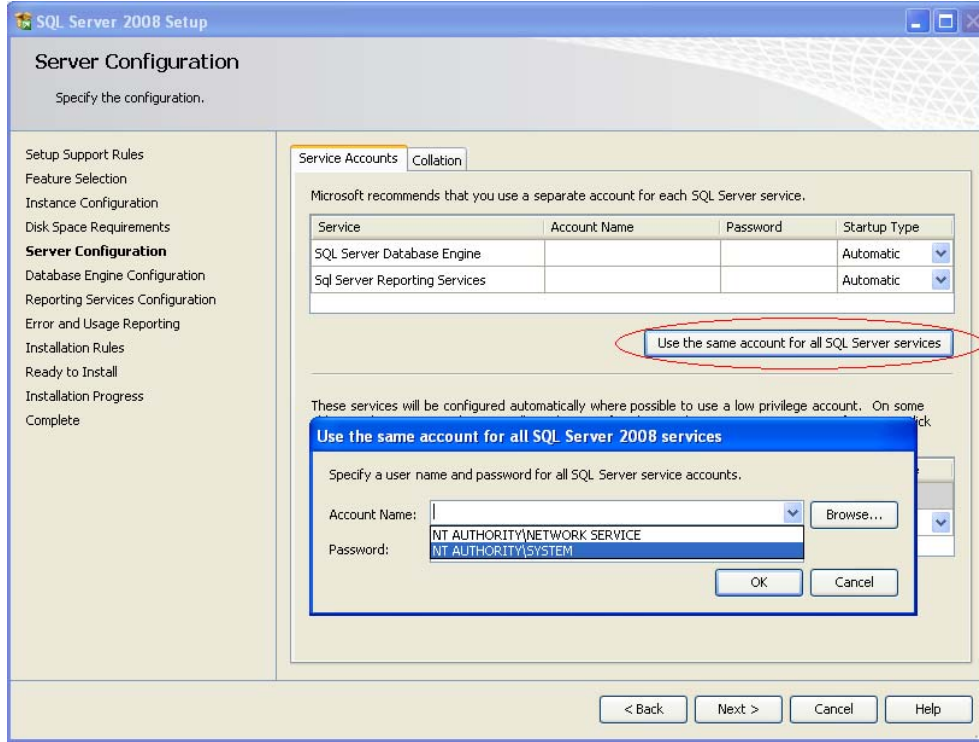


11. From the Instance Configuration Window select Default Instance then Next >

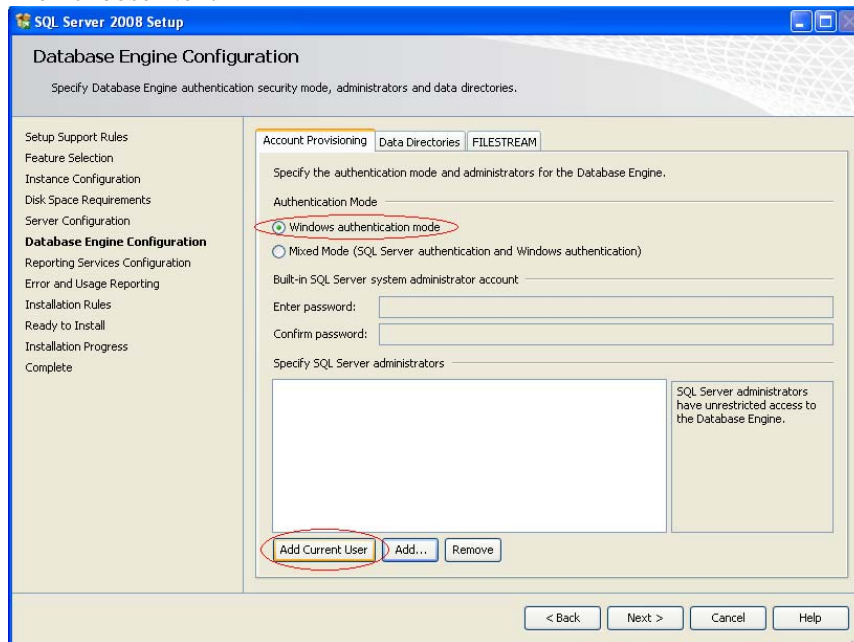


12. From Disk Space Requirements choose Next>

13. From the Server Configuration Window choose the Use the same account for all SQL Server services. Then from the popup, use the drop down to select NT AUTHORITY\SYSTEM then OK then Next> (This will use the local security profile settings)

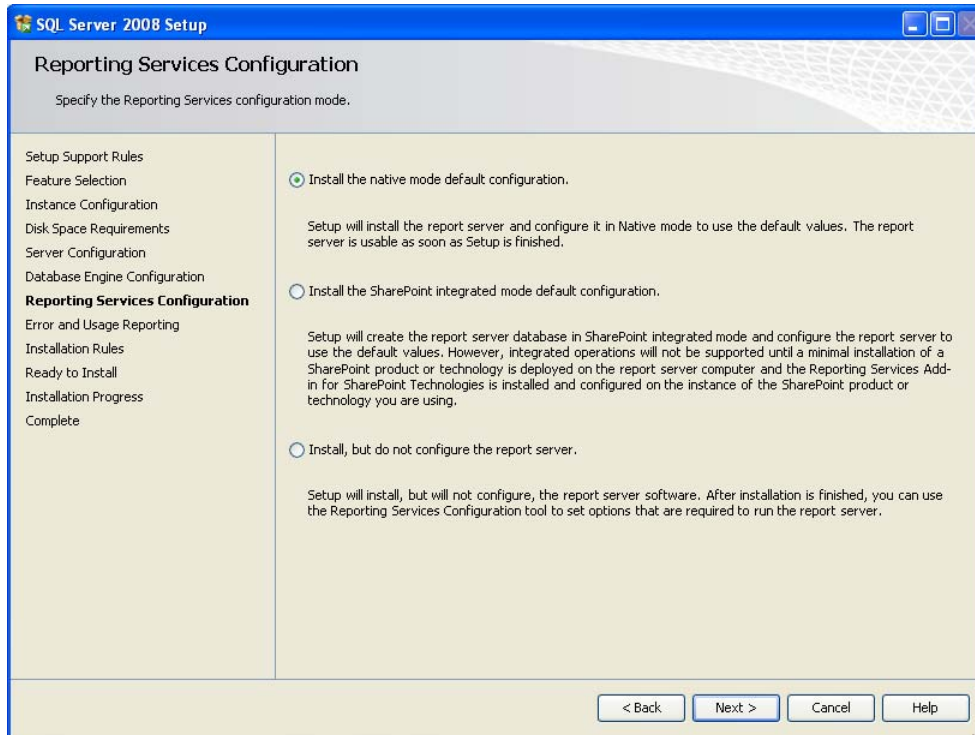


14. From the Database Engine Configuration window choose Windows Authentication Mode then Add Current User. Then choose Next>

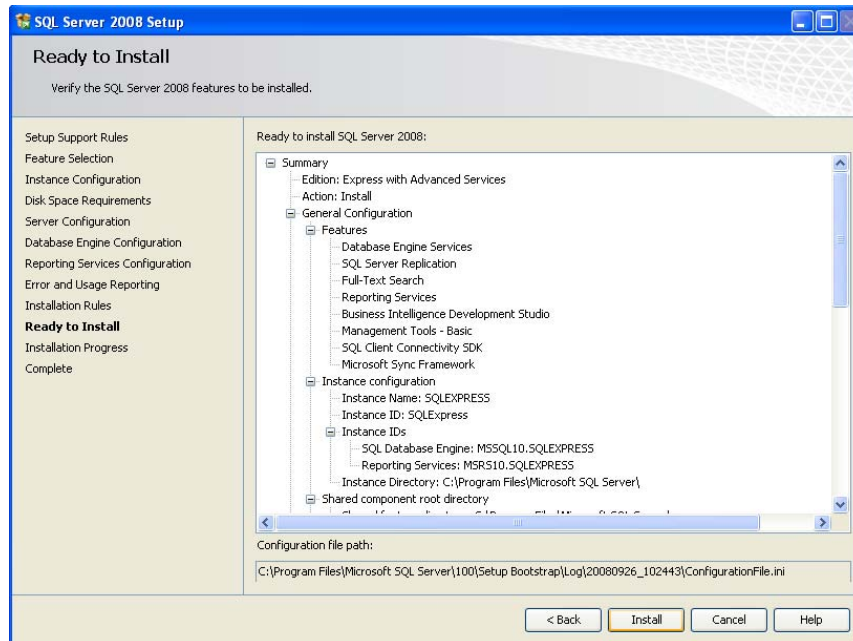




- From the Reporting Services Window, make sure Install the Native Mode Default Configuration is selected and choose Next>

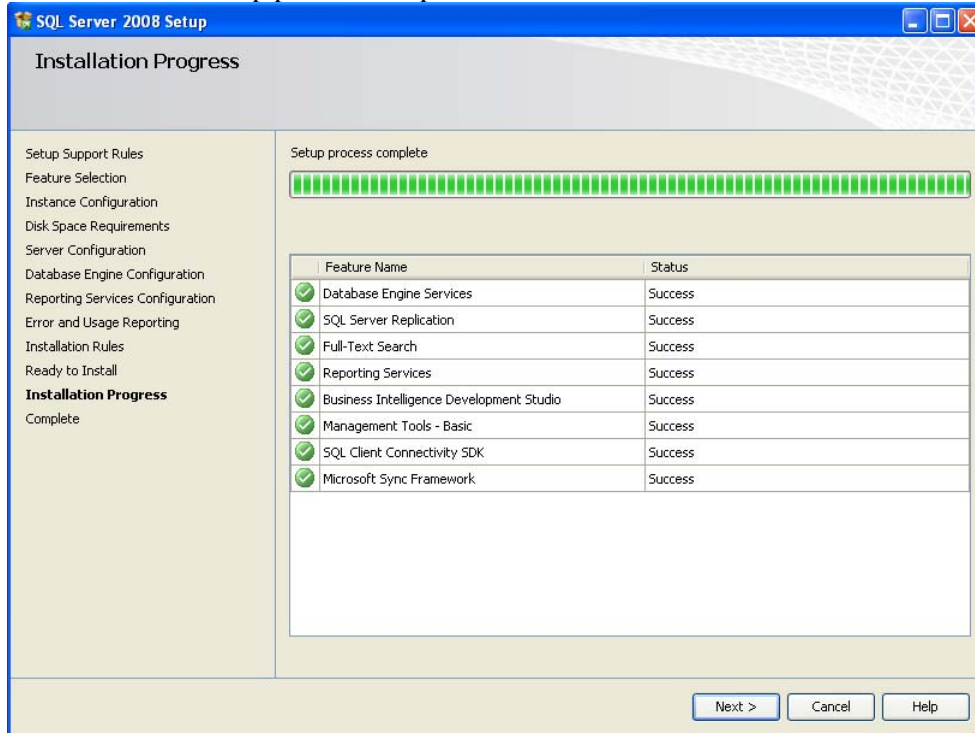


- From the Error and Usage Reporting Choose Next>
- From Installation Rules Choose Next>
- From Ready to Install window choose Install





19. The Installation Progress Window will now appear. This step can take approximately 45 minutes to 1 Hour and will result with Setup process complete.

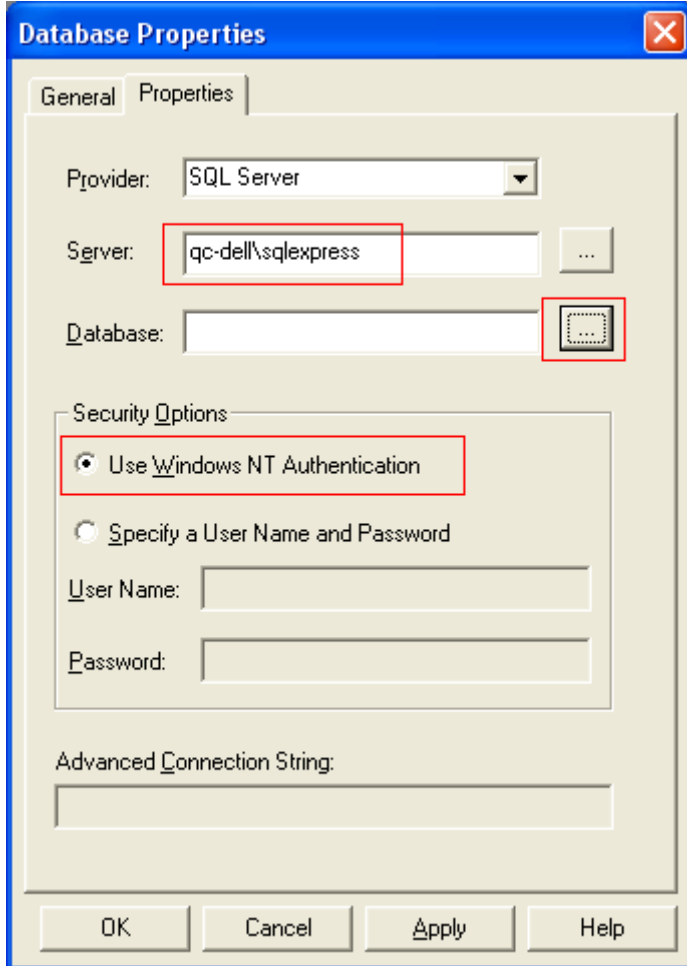


20. The Complete window will appear denoting the successful install then choose close.
21. Close the SQL Server Installation Center Window with the Red X.
22. You must launch the SQL Server once to complete the configuration.
Start -> All Programs -> Microsoft SQL Server 2008 -> SQL Server Management Studio
Then Connect

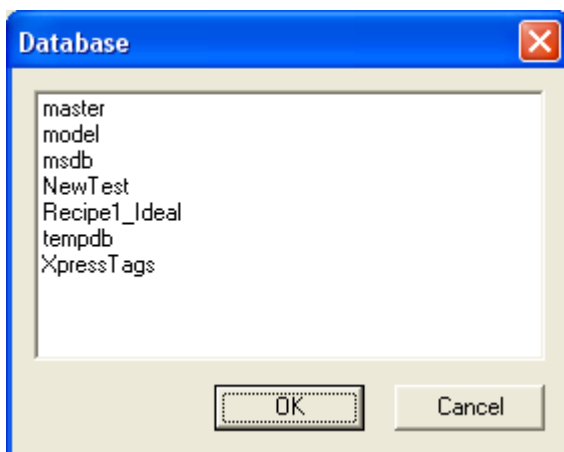


Launch InteractX.

Add a database to the application. In the Database Properties dialog select: SQL Server as the provider. In the Server dialog type the name of the computer that has SQL Express installed, followed by a \, followed by SQLExpress. (See the screen capture below). In Security Options, select 'Use Windows NT Authentication.' Press the ... button next to the Database text box. A list of Databases in SQL Server Express should be listed. A Database from the list does not have to be the database chosen to be used by the application. If the dialog appears showing the list of created database's it's a confirmation that InteractX is talking to SQL Express. InteractX will create a SQL Express database in runtime if that database does not already exist.



(Database Properties Dialog)



(The list of SQL Express Databases on the QC-DELL machine.)