

MOTOR DATA @ 230 VAC (TRAP)

MOTOR PARAMETERS	UNITS	VALUE
HORSEPOWER	HP RATED	1.05
KILOWATTS	KW RATED	0.78
MAX. OPERATING SPEED	N MAX RPM	3000
SPEED @ RATED TORQUE	N RATED RPM	2400
* CONTINUOUS RATED TORQUE @ 2400 RPM	IN-LBS[Nm]	27.5[3.1]
* CONTINUOUS STALL TORQUE	IN-LBS[Nm]	30.0[3.4]
CONTINUOUS LINE CURRENT	AMPS	3.7
PEAK TORQUE	IN-LBS[Nm]	111.5[12.6]
PEAK CURRENT	AMPS	13.6
MAX. THEORETICAL ACCEL.	RAD/SEC ²	112,513
TORQUE SENSITIVITY	Kt [IN-LBS/AMP][Nm/AMP]	8.2[0.94]
BACK EMF (LINE TO LINE)	Vrms/Krpm	73.2
D.C. RESISTANCE (P-P)	OHMS	8.4
INDUCTANCE (P-P)	MILLIHENRIES	27.0
ROTOR INERTIA	Jm [IN-LBS-SEC ²][Kg-M ²]	0.000991[0.0001116]
STATIC FRICTION	Tf [IN-LBS][Nm]	0.5[0.06]

*25°C AMBIENT WITH A MAXIMUM CASE TEMPERATURE OF 100°C ON MOTOR. MOTOR MOUNTED ON A 10" X 10" X 1/4" ALUMINUM HEATSINK. THERMOSTAT IN STATOR WINDINGS WILL OPEN IF WINDING TEMPERATURE EXCEEDS 155°C. THIS ALLOWS FOR AN APPROXIMATE +10% HEADROOM IN THE CONTINUOUS TORQUE RATING BEFORE THERMOSTAT OPENS.

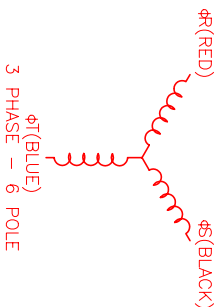
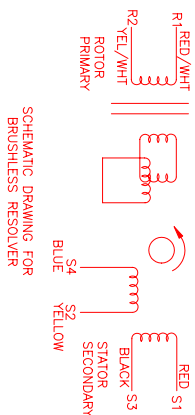
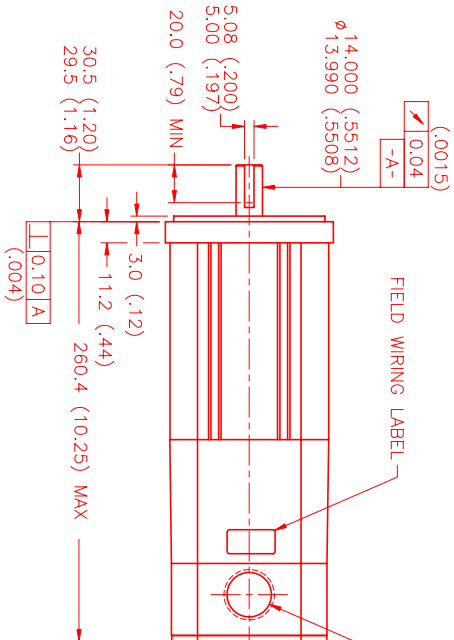
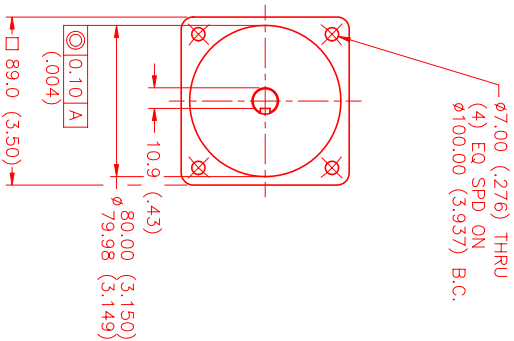
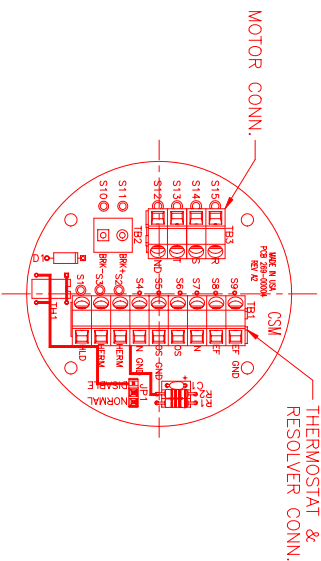
MECHANICAL NOTES:

1. AXIAL LOAD: 25 LBS MAX
2. RADIAL LOAD: 40 LBS MAX @ 1" FROM FACE
3. MOTOR SEALED TO IP65.
4. MOTOR WEIGHT: 10.4 LBS. [4.7 Kg]
5. MOTOR FINISH: BLACK EPOXY
6. MOTOR OUTPUT SHAFT: STAINLESS STEEL
7. MILLIMETERS (INCHES)

CONNECTION CHART

MOTOR WIRE LEADS	RESOLVER WIRE LEADS	
TERM	WIRE FUNCTION	WIRE COLOR
S15	φR	RED
S14	φS	BLACK
S13	φT	BLUE
S12	PE GND	GRN/YEL

RESOLVER WIRE LEADS	MOTOR WIRE LEADS	
TERM	WIRE FUNCTION	WIRE COLOR
S9	REF GND	YEL/WHIT
S8	REF	RED/WHIT
S7	SIN	YELLOW
S6	COS	RED
S5	COS GND	BLACK
S4	SIN GND	BLUE
S3	THERM	BLACK
S2	THERM	BLACK
S1	GND/SHLD	GRN/YEL



REV#	DESCRIPTION	DATE	APPD.
1	PRELIMINARY	3/24/99	MVS

NO.	PART NUMBER	DESCRIPTION	QTY.
1	MPM892BTG7G3N	Brushless Resolver	1

NO.	REV#	DATE	APPD.
1	1	3/24/99	MVS

NO.	REV#	DATE	APPD.
1	1	3/24/99	MVS

MTS Systems Corporation
Automation Division

DATE: 3/24/99
DRAWN: MVS
CHECKED: MVS
APPROVED: MVS