

MOTOR DATA @ 230 VAC (TRAP)

MOTOR PARAMETERS	UNITS	VALUE
HORSEPOWER	HP	1.62
KILOWATTS	KW	1.20
MAX. OPERATING SPEED	N. MAX RPM	5000
SPEED @ RATED TORQUE	N RATED RPM	4000
* CONTINUOUS RATED TORQUE @ 4000 RPM	IN-LBS[INm]	25.5[2.9]
* CONTINUOUS STALL TORQUE	IN-LBS[INm]	30.0[3.4]
CONTINUOUS LINE CURRENT	AMPS	7.3
PEAK TORQUE	IN-LBS[INm]	105.0[11.9]
PEAK CURRENT	AMPS	26.8
MAX. THEORETICAL ACCEL.	RAD/SEC ²	105,954
TORQUE SENSITIVITY	K[IN-LBS/AMP][Nm/AMP]	4.1[.47]
BACK EMF (LINE TO LINE)	Vrms/Krpm	36.6
D.C. RESISTANCE (P-P)	OHMS	1.5
INDUCTANCE (P-P)	MILLIHENRIES	5.1
ROTOR INERTIA	Jm[IN-LBS-SEC ²][Kg-M ²]	.000991[.000116]
STATIC FRICTION	Tf[IN-LBS[INm]]	.5[.06]

*25°C AMBIENT WITH A MAXIMUM CASE TEMPERATURE OF 100°C ON MOTOR. MOTOR MOUNTED ON A 10" X 10" X 1/4" ALUMINUM HEATSINK. THERMOSTAT IN STATOR WINDINGS WILL OPEN IF WINDING TEMPERATURE EXCEEDS 155°C. THIS ALLOWS FOR AN APPROXIMATE +10% HEADROOM IN THE CONTINUOUS TORQUE RATING BEFORE THERMOSTAT OPENS.

MECHANICAL NOTES:

- AXIAL LOAD: 25 LBS MAX
- RADIAL LOAD: 40 LBS MAX @ 1" FROM FACE
- MOTOR SEALED TO IP65.
- MOTOR WEIGHT: 9.3 LBS. [4.2 Kg]
- MOTOR FINISH: BLACK EPOXY
- MOTOR OUTPUT SHAFT: STAINLESS STEEL
- INCHES (MILLIMETERS)

ENCODER: (290-00107)

OH48-409656-L6-5V

CONNECTION CHART

MOTOR CONNECTOR:
PT02E-14-5P(027)
(270-00026)

MOTOR WIRE LEADS	WIRE FUNCTION	WIRE COLOR
A	ΦR	RED
B	ΦS	BLACK
C	ΦT	BLUE
D	PE GND	GRN/YEL
E	-	-

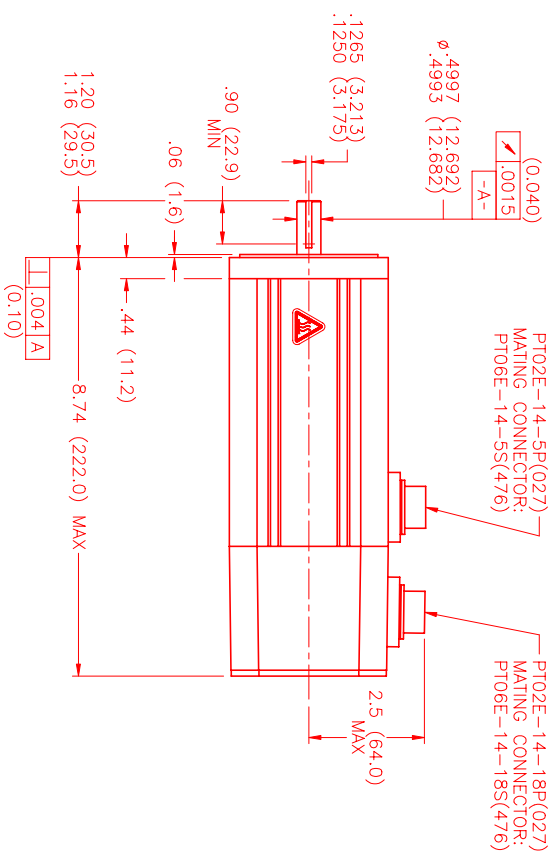
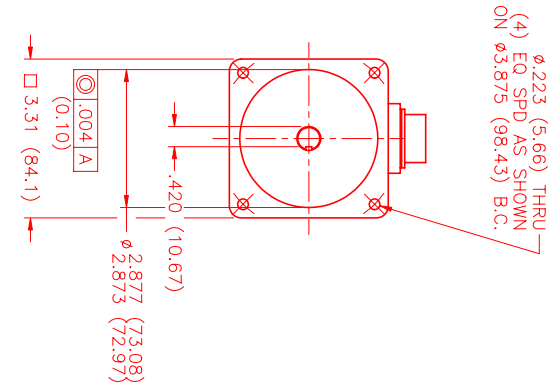
ENCODER/THERM CONNECTOR:
PT02E-14-18P(027)
(270-00024)

ENC/THERM WIRE LEADS	PIN	WIRE FUNCTION	WIRE COLOR
	T	GROUND	BLACK
	K	+5VDC	RED
	B	CH A	BLUE
	C	CH A	BLUE/BLK
	N	CH B	GREEN
	P	CH B	GRN/BLK
	M	CH Z	YELLOW
	U	CH Z	YEL/BLK
	E	CH U	BROWN
	R	CH U	BRN/BLK
	F	CH V	GRAY
	S	CH V	GRAY/BLK
	G	CH W	WHITE
	H	CH W	WHI/BLK
	D	GND/CABLE	SHLD
	A	THERM	BLACK
	L	THERM	BLACK
	J	GND	GRN/YEL

MOTOR & HALL POSITION CHART

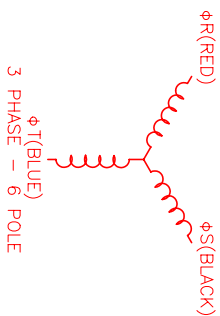
HALL LEADS	BROWN	GRAY	WHITE
MOTOR LEADS	BLACK respect to RED	RED respect to BLUE	BLUE respect to BLACK
VIEW ON THE OSCILLOSCOPE	AAA	AAA	AAA

*MOTOR ROTATION CCM (COUNTER CLOCKWISE) (LOOKING AT THE FACE OF THE MOTOR)



PT02E-14-5P(027)
MATING CONNECTOR:
PT06E-14-5S(476)

PT02E-14-18P(027)
MATING CONNECTOR:
PT06E-14-18S(476)



NO.	PART NUMBER	DESCRIPTION	QTY.
1	290-00107	Encoder	1
2	48-409656-L6-5V	Encoder Cable	1
3	290-00107	Encoder	1
4	48-409656-L6-5V	Encoder Cable	1
5	290-00107	Encoder	1
6	48-409656-L6-5V	Encoder Cable	1
7	290-00107	Encoder	1
8	48-409656-L6-5V	Encoder Cable	1
9	290-00107	Encoder	1
10	48-409656-L6-5V	Encoder Cable	1
11	290-00107	Encoder	1
12	48-409656-L6-5V	Encoder Cable	1
13	290-00107	Encoder	1
14	48-409656-L6-5V	Encoder Cable	1
15	290-00107	Encoder	1
16	48-409656-L6-5V	Encoder Cable	1
17	290-00107	Encoder	1
18	48-409656-L6-5V	Encoder Cable	1
19	290-00107	Encoder	1
20	48-409656-L6-5V	Encoder Cable	1
21	290-00107	Encoder	1
22	48-409656-L6-5V	Encoder Cable	1
23	290-00107	Encoder	1
24	48-409656-L6-5V	Encoder Cable	1
25	290-00107	Encoder	1
26	48-409656-L6-5V	Encoder Cable	1
27	290-00107	Encoder	1
28	48-409656-L6-5V	Encoder Cable	1
29	290-00107	Encoder	1
30	48-409656-L6-5V	Encoder Cable	1
31	290-00107	Encoder	1
32	48-409656-L6-5V	Encoder Cable	1
33	290-00107	Encoder	1
34	48-409656-L6-5V	Encoder Cable	1
35	290-00107	Encoder	1
36	48-409656-L6-5V	Encoder Cable	1
37	290-00107	Encoder	1
38	48-409656-L6-5V	Encoder Cable	1
39	290-00107	Encoder	1
40	48-409656-L6-5V	Encoder Cable	1
41	290-00107	Encoder	1
42	48-409656-L6-5V	Encoder Cable	1
43	290-00107	Encoder	1
44	48-409656-L6-5V	Encoder Cable	1
45	290-00107	Encoder	1
46	48-409656-L6-5V	Encoder Cable	1
47	290-00107	Encoder	1
48	48-409656-L6-5V	Encoder Cable	1
49	290-00107	Encoder	1
50	48-409656-L6-5V	Encoder Cable	1
51	290-00107	Encoder	1
52	48-409656-L6-5V	Encoder Cable	1
53	290-00107	Encoder	1
54	48-409656-L6-5V	Encoder Cable	1
55	290-00107	Encoder	1
56	48-409656-L6-5V	Encoder Cable	1
57	290-00107	Encoder	1
58	48-409656-L6-5V	Encoder Cable	1
59	290-00107	Encoder	1
60	48-409656-L6-5V	Encoder Cable	1
61	290-00107	Encoder	1
62	48-409656-L6-5V	Encoder Cable	1
63	290-00107	Encoder	1
64	48-409656-L6-5V	Encoder Cable	1
65	290-00107	Encoder	1
66	48-409656-L6-5V	Encoder Cable	1
67	290-00107	Encoder	1
68	48-409656-L6-5V	Encoder Cable	1
69	290-00107	Encoder	1
70	48-409656-L6-5V	Encoder Cable	1
71	290-00107	Encoder	1
72	48-409656-L6-5V	Encoder Cable	1
73	290-00107	Encoder	1
74	48-409656-L6-5V	Encoder Cable	1
75	290-00107	Encoder	1
76	48-409656-L6-5V	Encoder Cable	1
77	290-00107	Encoder	1
78	48-409656-L6-5V	Encoder Cable	1
79	290-00107	Encoder	1
80	48-409656-L6-5V	Encoder Cable	1
81	290-00107	Encoder	1
82	48-409656-L6-5V	Encoder Cable	1
83	290-00107	Encoder	1
84	48-409656-L6-5V	Encoder Cable	1
85	290-00107	Encoder	1
86	48-409656-L6-5V	Encoder Cable	1
87	290-00107	Encoder	1
88	48-409656-L6-5V	Encoder Cable	1
89	290-00107	Encoder	1
90	48-409656-L6-5V	Encoder Cable	1
91	290-00107	Encoder	1
92	48-409656-L6-5V	Encoder Cable	1
93	290-00107	Encoder	1
94	48-409656-L6-5V	Encoder Cable	1
95	290-00107	Encoder	1
96	48-409656-L6-5V	Encoder Cable	1
97	290-00107	Encoder	1
98	48-409656-L6-5V	Encoder Cable	1
99	290-00107	Encoder	1
100	48-409656-L6-5V	Encoder Cable	1

REV.	DESCRIPTION	DATE	APPD.
PRELIMINARY		3/8/01	AJS

REVISIONS

REV.	DESCRIPTION	DATE	APPD.
PRELIMINARY		3/8/01	AJS

NO.	PART NUMBER	DESCRIPTION	QTY.
1	290-00107	Encoder	1
2	48-409656-L6-5V	Encoder Cable	1
3	290-00107	Encoder	1
4	48-409656-L6-5V	Encoder Cable	1
5	290-00107	Encoder	1
6	48-409656-L6-5V	Encoder Cable	1
7	290-00107	Encoder	1
8	48-409656-L6-5V	Encoder Cable	1
9	290-00107	Encoder	1
10	48-409656-L6-5V	Encoder Cable	1
11	290-00107	Encoder	1
12	48-409656-L6-5V	Encoder Cable	1
13	290-00107	Encoder	1
14	48-409656-L6-5V	Encoder Cable	1
15	290-00107	Encoder	1
16	48-409656-L6-5V	Encoder Cable	1
17	290-00107	Encoder	1
18	48-409656-L6-5V	Encoder Cable	1
19	290-00107	Encoder	1
20	48-409656-L6-5V	Encoder Cable	1
21	290-00107	Encoder	1
22	48-409656-L6-5V	Encoder Cable	1
23	290-00107	Encoder	1
24	48-409656-L6-5V	Encoder Cable	1
25	290-00107	Encoder	1
26	48-409656-L6-5V	Encoder Cable	1
27	290-00107	Encoder	1
28	48-409656-L6-5V	Encoder Cable	1
29	290-00107	Encoder	1
30	48-409656-L6-5V	Encoder Cable	1
31	290-00107	Encoder	1
32	48-409656-L6-5V	Encoder Cable	1
33	290-00107	Encoder	1
34	48-409656-L6-5V	Encoder Cable	1
35	290-00107	Encoder	1
36	48-409656-L6-5V	Encoder Cable	1
37	290-00107	Encoder	1
38	48-409656-L6-5V	Encoder Cable	1
39	290-00107	Encoder	1
40	48-409656-L6-5V	Encoder Cable	1
41	290-00107	Encoder	1
42	48-409656-L6-5V	Encoder Cable	1
43	290-00107	Encoder	1
44	48-409656-L6-5V	Encoder Cable	1
45	290-00107	Encoder	1
46	48-409656-L6-5V	Encoder Cable	1
47	290-00107	Encoder	1
48	48-409656-L6-5V	Encoder Cable	1
49	290-00107	Encoder	1
50	48-409656-L6-5V	Encoder Cable	1
51	290-00107	Encoder	1
52	48-409656-L6-5V	Encoder Cable	1
53	290-00107	Encoder	1
54	48-409656-L6-5V	Encoder Cable	1
55	290-00107	Encoder	1
56	48-409656-L6-5V	Encoder Cable	1
57	290-00107	Encoder	1
58	48-409656-L6-5V	Encoder Cable	1
59	290-00107	Encoder	1
60	48-409656-L6-5V	Encoder Cable	1
61	290-00107	Encoder	1
62	48-409656-L6-5V	Encoder Cable	1
63	290-00107	Encoder	1
64	48-409656-L6-5V	Encoder Cable	1
65	290-00107	Encoder	1
66	48-409656-L6-5V	Encoder Cable	1
67	290-00107	Encoder	1
68	48-409656-L6-5V	Encoder Cable	1
69	290-00107	Encoder	1
70	48-409656-L6-5V	Encoder Cable	1
71	290-00107	Encoder	1
72	48-409656-L6-5V	Encoder Cable	1
73	290-00107	Encoder	1
74	48-409656-L6-5V	Encoder Cable	1
75	290-00107	Encoder	1
76	48-409656-L6-5V	Encoder Cable	1
77	290-00107	Encoder	1
78	48-409656-L6-5V	Encoder Cable	1
79	290-00107	Encoder	1
80	48-409656-L6-5V	Encoder Cable	1