

MOTOR DATA @ 230 VAC (SINE)

MOTOR PARAMETERS	UNITS	VALUE
HORSEPOWER	HP	1.62
KILOWATTS	KW	1.20
MAX. OPERATING SPEED	N MAX RPM	5000
SPEED @ RATED TORQUE	N RATED RPM	4000
* CONTINUOUS RATED TORQUE @ 4000 RPM	IN-LBS[N_m]	25.5[12.9]
* CONTINUOUS STALL TORQUE	IN-LBS[N_m]	30.0[13.4]
CONTINUOUS LINE CURRENT	AMPS/[RMS/φ]	5.2
PEAK TORQUE	IN-LBS[N_m]	109.9[12.42]
PEAK CURRENT	AMPS/[RMS/φ]	19.0
MAX. THEORETICAL ACCEL.	RAD/SEC ²	110,898
TORQUE SENSITIVITY	Kt [IN-LBS/AMP/[RMS/φ]/[Nm/AMP/[RMS/φ]]	5.8[0.66]
BACK EMF (LINE TO LINE)	Vrms/Krpm	36.6
D.C. RESISTANCE (P-P)	OHMS	1.5
INDUCTANCE (P-P)	MILLIHENRIES	5.1
ROTOR INERTIA	Jm [IN-LBS-SEC ²] [Kg-M ²]	0.000991[0.0001116]
STATIC FRICTION	Tf [IN-LBS[N_m]]	0.5[0.06]

*25°C AMBIENT WITH A MAXIMUM CASE TEMPERATURE OF 100°C ON MOTOR. MOTOR MOUNTED ON A 10" X 10" X 1/4" ALUMINUM HEATSINK. THERMOSTAT IN STATOR WINDINGS WILL OPEN IF WINDING TEMPERATURE EXCEEDS 155°C. THIS ALLOWS FOR AN APPROXIMATE +10% HEADROOM IN THE CONTINUOUS TORQUE RATING BEFORE THERMOSTAT OPENS.

MECHANICAL NOTES:

- AXIAL LOAD: 25 LBS MAX
- RADIAL LOAD: 40 LBS MAX @ 1" FROM FACE
- MOTOR SEALED TO IP65.
- MOTOR WEIGHT: 9.3 LBS. [4.2 Kg]
- MOTOR FINISH: BLACK EPOXY
- MOTOR OUTPUT SHAFT: STAINLESS STEEL
- INCHES (MILLIMETERS)

ENCODER: (290-00052)
OH48-2000P6-L6-5V

CONNECTION CHART

ENCODER/THERM CONNECTOR:
PT02E-14-18P(027)
(270-00024)

ENC/THERM WIRE LEADS	WIRE FUNCTION	WIRE COLOR
PIN	GROUND	BLACK
T	+5VDC	RED
K	CH A	BLUE
B	CH A	BLUE
C	CH A	BLUE/BLK
N	CH B	GREEN
P	CH B	GRN/BLK
M	CH Z	YELLOW
U	CH Z	YEL/BLK
E	CH U	BROWN
R	CH U	BRN/BLK
F	CH V	GRAY
S	CH V	GRAY/BLK
G	CH W	WHITE
H	CH W	WHT/BLK
D	GND/CABLE	SHLD
A	THERM	BLACK
L	THERM	BLACK
J	GND	GRN/YEL

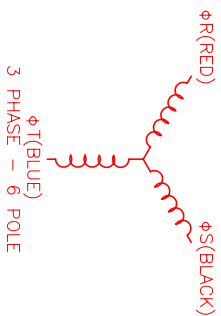
MOTOR CONNECTOR:
PT02E-14-5P(027)
(270-00026)

MOTOR WIRE LEADS	WIRE FUNCTION	WIRE COLOR
PIN	φR	RED
A	φS	BLACK
B	φT	BLUE
C	PE GND	GRN/YEL
D	—	—
E	—	—

MOTOR & HALL POSITION CHART

HALL LEADS	BROWN	GRAY	WHITE
MOTOR LEADS	BLACK respect to RED	RED respect to BLUE	BLUE respect to BLACK
VIEW ON THE OSCILLOSCOPE	AAA	AAA	AAA

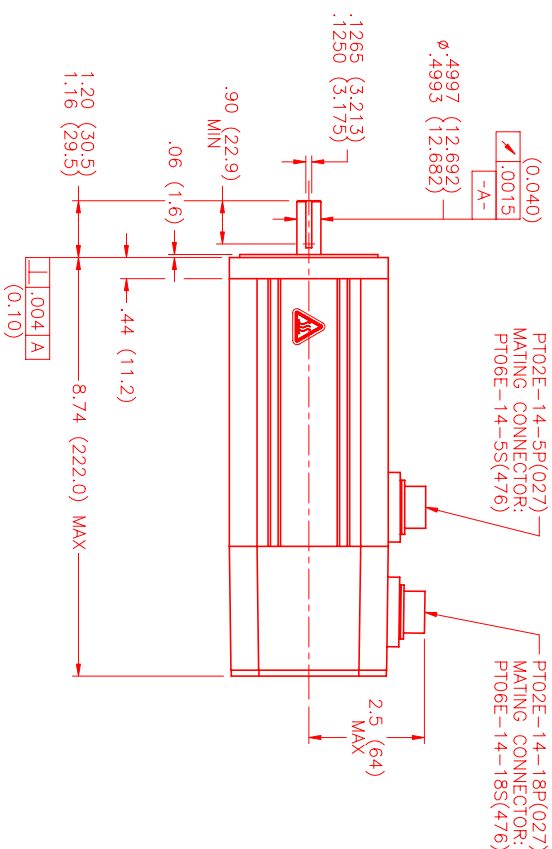
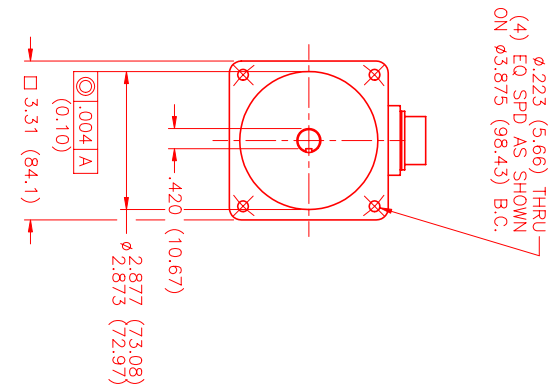
*MOTOR ROTATION CRY (COUNTER CLOCKWISE) (LOOKING AT THE FACE OF THE MOTOR)



REV#	DESCRIPTION	DATE	APPD.
PRELIMINARY		10/21/99	MS

REVISIONS

REV#	DESCRIPTION	DATE	APPD.
PRELIMINARY		10/21/99	MS



NO.	PART NUMBER	DESCRIPTION	QTY.
1	MPM892ASG6J1N	230VAC SINE MOTOR	1

MTS Automation Division

DATE	BY	APPD.
10/21/99	MS	MS

NO.	PART NUMBER	DESCRIPTION	QTY.
1	MPM892ASG6J1N	230VAC SINE MOTOR	1