

MOTOR DATA @ 110 VAC (TRAP)

MOTOR PARAMETERS	UNITS	VALUE
HORSEPOWER	HP RATED	0.34
	KW RATED	0.26
MAX. OPERATING SPEED	N. MAX RPM	3600
SPEED @ RATED TORQUE	N RATED RPM	2700
* CONTINUOUS RATED TORQUE @ 2700 RPM	IN-LBS [Nm]	8.0 [.90]
* CONTINUOUS STALL TORQUE	IN-LBS [Nm]	10.0 [1.13]
CONTINUOUS LINE CURRENT	AMPS	3.1
PEAK TORQUE	IN-LBS [Nm]	30.0 [3.4]
PEAK CURRENT	AMPS	9.4
MAX. THEORETICAL ACCEL.	RAD/SEC ²	188,679
TORQUE SENSITIVITY	Kt [IN-LBS/AMP] [Nm/AMP]	3.2 [.36]
BACK EMF (LINE TO LINE)	Vrms/Krpm	28.3
D.C. RESISTANCE (P-P)	OHMS	7.0
INDUCCANCE (P-P)	MILLIHENRIES	11.0
ROTOR INERTIA	Jm [IN-LBS-SEC ²] [Kg-M ²]	.000159 [.0000179]
STATIC FRICTION	Tf [IN-LBS] [Nm]	.8 [.09]

*25°C AMBIENT WITH A MAXIMUM CASE TEMPERATURE OF 100°C ON MOTOR. MOTOR MOUNTED ON A 10" X 10" X 1/4" ALUMINUM HEATSINK. THERMOSTAT IN STATOR WINDINGS WILL OPEN IF WINDING TEMPERATURE EXCEEDS 155°C. THIS ALLOWS FOR AN APPROXIMATE +10% HEADROOM IN THE CONTINUOUS TORQUE RATING BEFORE THERMOSTAT OPENS.

MECHANICAL NOTES:

1. AXIAL LOAD: 15 LBS MAX
2. RADIAL LOAD: 20 LBS MAX @ 1" FROM FACE
3. MOTOR SEALED TO IP65.
4. MOTOR WEIGHT: 3.6 LBS. [1.6 kg]
5. MOTOR FINISH: BLACK EPOXY
6. MOTOR OUTPUT SHAFT: STAINLESS STEEL
7. INCHES (MILLIMETERS)

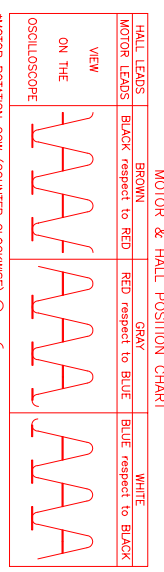
ENCODER: (290-00056)
OH35-2000P4-L6-5V

CONNECTION CHART

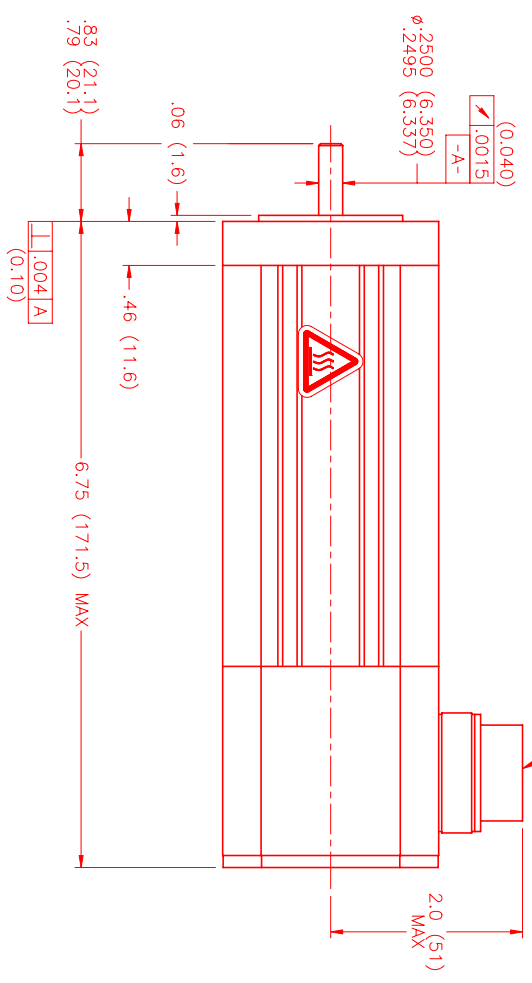
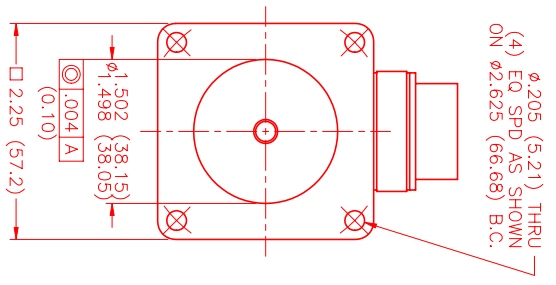
MOTOR/ENCODER/THERM CONNECTOR:
PT02E-16-23P(027)
(270-00219)

ENC/THERM	WIRE FUNCTION	WIRE COLOR	LEADS
PIN	FUNCTION	COLOR	
T	GROUND	BLACK	
E	+5VDC	RED	
F	CH A	BLUE	
U	CH A\	BLUE/BLK	
G	CH B	GREEN	
V	CH B\	GRN/BLK	
H	CH Z	YELLOW	
W	CH Z\	YEL/BLK	
J	CH U	BROWN	
K	CH U\	BRN/BLK	
X	CH V	GRAY	
L	CH V\	GRAY/BLK	
Y	CH W	WHITE	
M	CH W\	WHT/BLK	
N	GND/CABLE	SHLD	
S	THERM	BLACK	
R	THERM	BLACK	
P	-	-	
Z	-	-	

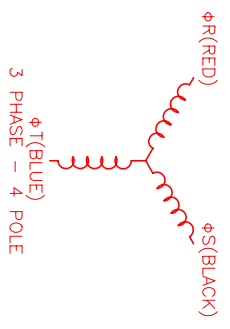
MOTOR WIRE	WIRE FUNCTION	WIRE COLOR	LEADS
PIN	FUNCTION	COLOR	
A	ΦR	RED	
B	ΦS	BLACK	
C	ΦT	BLUE	
D	PE GND	GRN/YEL	



*MOTOR ROTATION CW (COUNTER CLOCKWISE) (LOOKING AT THE FACE OF THE MOTOR)



PT02E-16-23P(027)
MATING CONNECTOR:
PT06E-16-23S(476)



NO.	PART NUMBER	DESCRIPTION	QTY.
UNLESS SPECIFIED			
DECIMAL ANGLES	± .005		
FRAC. ANGLES	± .002		
FRAC. ANGLES	± .001		
FRAC. ANGLES	± .0005		
FRAC. ANGLES	± .0002		
FRAC. ANGLES	± .0001		
FRAC. ANGLES	± .00005		
FRAC. ANGLES	± .00002		
FRAC. ANGLES	± .00001		
FRAC. ANGLES	± .000005		
FRAC. ANGLES	± .000002		
FRAC. ANGLES	± .000001		
FRAC. ANGLES	± .0000005		
FRAC. ANGLES	± .0000002		
FRAC. ANGLES	± .0000001		
FRAC. ANGLES	± .00000005		
FRAC. ANGLES	± .00000002		
FRAC. ANGLES	± .00000001		
FRAC. ANGLES	± .000000005		
FRAC. ANGLES	± .000000002		
FRAC. ANGLES	± .000000001		
FRAC. ANGLES	± .0000000005		
FRAC. ANGLES	± .0000000002		
FRAC. ANGLES	± .0000000001		
FRAC. ANGLES	± .00000000005		
FRAC. ANGLES	± .00000000002		
FRAC. ANGLES	± .00000000001		
FRAC. ANGLES	± .000000000005		
FRAC. ANGLES	± .000000000002		
FRAC. ANGLES	± .000000000001		
FRAC. ANGLES	± .0000000000005		
FRAC. ANGLES	± .0000000000002		
FRAC. ANGLES	± .0000000000001		
FRAC. ANGLES	± .00000000000005		
FRAC. ANGLES	± .00000000000002		
FRAC. ANGLES	± .00000000000001		
FRAC. ANGLES	± .000000000000005		
FRAC. ANGLES	± .000000000000002		
FRAC. ANGLES	± .000000000000001		
FRAC. ANGLES	± .0000000000000005		
FRAC. ANGLES	± .0000000000000002		
FRAC. ANGLES	± .0000000000000001		
FRAC. ANGLES	± .00000000000000005		
FRAC. ANGLES	± .00000000000000002		
FRAC. ANGLES	± .00000000000000001		
FRAC. ANGLES	± .000000000000000005		
FRAC. ANGLES	± .000000000000000002		
FRAC. ANGLES	± .000000000000000001		
FRAC. ANGLES	± .0000000000000000005		
FRAC. ANGLES	± .0000000000000000002		
FRAC. ANGLES	± .0000000000000000001		
FRAC. ANGLES	± .00000000000000000005		
FRAC. ANGLES	± .00000000000000000002		
FRAC. ANGLES	± .00000000000000000001		
FRAC. ANGLES	± .000000000000000000005		
FRAC. ANGLES	± .000000000000000000002		
FRAC. ANGLES	± .000000000000000000001		
FRAC. ANGLES	± .0000000000000000000005		
FRAC. ANGLES	± .0000000000000000000002		
FRAC. ANGLES	± .0000000000000000000001		
FRAC. ANGLES	± .00000000000000000000005		
FRAC. ANGLES	± .00000000000000000000002		
FRAC. ANGLES	± .00000000000000000000001		
FRAC. ANGLES	± .000000000000000000000005		
FRAC. ANGLES	± .000000000000000000000002		
FRAC. ANGLES	± .000000000000000000000001		
FRAC. ANGLES	± .0000000000000000000000005		
FRAC. ANGLES	± .0000000000000000000000002		
FRAC. ANGLES	± .0000000000000000000000001		
FRAC. ANGLES	± .00000000000000000000000005		
FRAC. ANGLES	± .00000000000000000000000002		
FRAC. ANGLES	± .00000000000000000000000001		
FRAC. ANGLES	± .000000000000000000000000005		
FRAC. ANGLES	± .000000000000000000000000002		
FRAC. ANGLES	± .000000000000000000000000001		
FRAC. ANGLES	± .0000000000000000000000000005		
FRAC. ANGLES	± .0000000000000000000000000002		
FRAC. ANGLES	± .0000000000000000000000000001		
FRAC. ANGLES	± .00000000000000000000000000005		
FRAC. ANGLES	± .00000000000000000000000000002		
FRAC. ANGLES	± .00000000000000000000000000001		
FRAC. ANGLES	± .000000000000000000000000000005		
FRAC. ANGLES	± .000000000000000000000000000002		
FRAC. ANGLES	± .000000000000000000000000000001		
FRAC. ANGLES	± .0000000000000000000000000000005		
FRAC. ANGLES	± .0000000000000000000000000000002		
FRAC. ANGLES	± .0000000000000000000000000000001		
FRAC. ANGLES	± .00000000000000000000000000000005		
FRAC. ANGLES	± .00000000000000000000000000000002		
FRAC. ANGLES	± .00000000000000000000000000000001		
FRAC. ANGLES	± .000000000000000000000000000000005		
FRAC. ANGLES	± .000000000000000000000000000000002		
FRAC. ANGLES	± .000000000000000000000000000000001		
FRAC. ANGLES	± .0000000000000000000000000000000005		
FRAC. ANGLES	± .0000000000000000000000000000000002		
FRAC. ANGLES	± .0000000000000000000000000000000001		
FRAC. ANGLES	± .00000000000000000000000000000000005		
FRAC. ANGLES	± .00000000000000000000000000000000002		
FRAC. ANGLES	± .00000000000000000000000000000000001		
FRAC. ANGLES	± .000000000000000000000000000000000005		
FRAC. ANGLES	± .000000000000000000000000000000000002		
FRAC. ANGLES	± .000000000000000000000000000000000001		
FRAC. ANGLES	± .0000000000000000000000000000000000005		
FRAC. ANGLES	± .0000000000000000000000000000000000002		
FRAC. ANGLES	± .0000000000000000000000000000000000001		
FRAC. ANGLES	± .00000000000000000000000000000000000005		
FRAC. ANGLES	± .00000000000000000000000000000000000002		
FRAC. ANGLES	± .00000000000000000000000000000000000001		
FRAC. ANGLES	± .000000000000000000000000000000000000005		
FRAC. ANGLES	± .000000000000000000000000000000000000002		
FRAC. ANGLES	± .000000000000000000000000000000000000001		
FRAC. ANGLES	± .0000000000000000000000000000000000000005		
FRAC. ANGLES	± .0000000000000000000000000000000000000002		
FRAC. ANGLES	± .0000000000000000000000000000000000000001		
FRAC. ANGLES	± .005		
FRAC. ANGLES	± .002		
FRAC. ANGLES	± .001		
FRAC. ANGLES	± .0005		
FRAC. ANGLES	± .0002		
FRAC. ANGLES	± .0001		
FRAC. ANGLES	± .005		
FRAC. ANGLES	± .002		
FRAC. ANGLES	± .001		
FRAC. ANGLES	± .0005		
FRAC. ANGLES	± .0002		
FRAC. ANGLES	± .0001		
FRAC. ANGLES	± .005		
FRAC. ANGLES	± .002		
FRAC. ANGLES	± .001		
FRAC. ANGLES	± .0005		
FRAC. ANGLES	± .0002		
FRAC. ANGLES	± .0001		
FRAC. ANGLES	± .005		
FRAC. ANGLES	± .002		
FRAC. ANGLES	± .001		
FRAC. ANGLES	± .0005		
FRAC. ANGLES	± .0002		
FRAC. ANGLES	± .0001		
FRAC. ANGLES	± .005		
FRAC. ANGLES	± .002		
FRAC. ANGLES	± .001		
FRAC. ANGLES	± .0005		
FRAC. ANGLES	± .0002		
FRAC. ANGLES	± .0001		