

MOTOR DATA @ 110 VAC (TRAP)

MOTOR PARAMETERS	UNITS	VALUE
HORSEPOWER	HP	.34
KILOWATTS	KW RATED	.26
MAX. OPERATING SPEED	N. MAX RPM	3600
SPEED @ RATED TORQUE	N RATED RPM	2700
* CONTINUOUS RATED TORQUE @ 2700 RPM	IN-LBS[Nm]	8.0[.90]
* CONTINUOUS STALL TORQUE	IN-LBS[Nm]	10.0[1.12]
CONTINUOUS LINE CURRENT	AMPS	3.1
PEAK TORQUE	IN-LBS[Nm]	30.0[3.4]
PEAK CURRENT	AMPS	9.4
MAX. THEORETICAL ACCEL.	RAD/SEC ²	163.043
TORQUE SENSITIVITY	Kt IN-LBS/AMP[Nm/AMP]	3.2[.36]
BACK EMF (LINE TO LINE)	Vrms/Krpm	28.3
D.C. RESISTANCE (P-P)	OHMS	7.0
INDUCTANCE (P-P)	MILLIHENRIES	11.0
ROTOR INERTIA W/BRAKE	Jm [IN-LBS-SEC ²] [Kg-M ²]	.000184[.0000207]
STATIC FRICTION	Tf [IN-LBS] [Nm]	.8[.09]

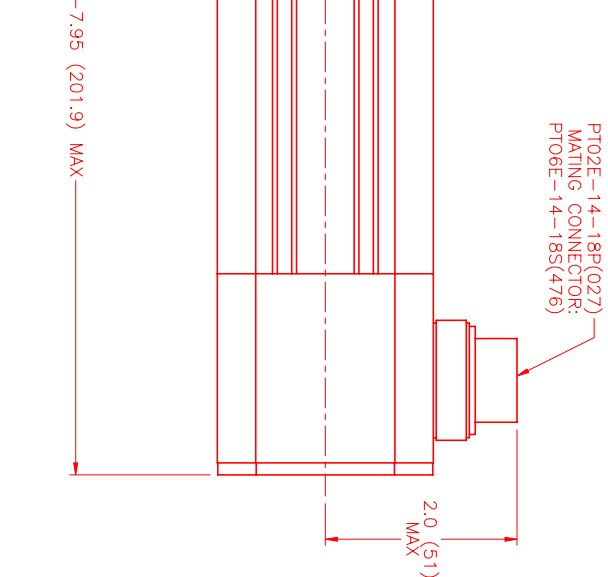
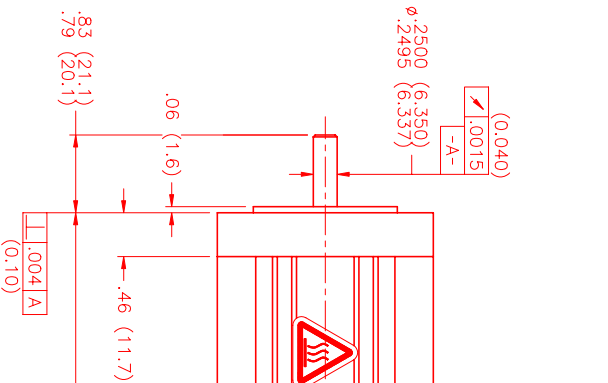
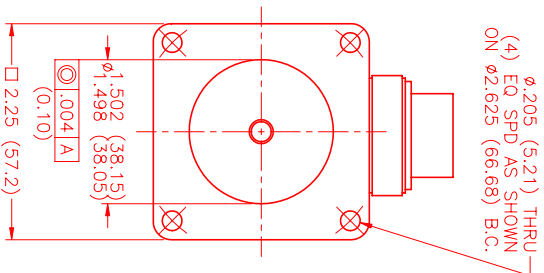
*25°C AMBIENT WITH A MAXIMUM CASE TEMPERATURE OF 100°C ON MOTOR. MOTOR MOUNTED ON A 10" X 10" X 1/4" ALUMINUM HEATSINK. THERMOSTAT IN STATOR WINDINGS WILL OPEN IF WINDING TEMPERATURE EXCEEDS 155°C. THIS ALLOWS FOR AN APPROXIMATE +10% HEADROOM IN THE CONTINUOUS TORQUE RATING BEFORE THERMOSTAT OPENS.

MECHANICAL NOTES:

1. AXIAL LOAD: 15 LBS MAX
2. RADIAL LOAD: 20 LBS MAX @ 1" FROM FACE
3. MOTOR SEALED TO IP65.
4. MOTOR WEIGHT: 4.5 LBS [2.0 Kg]
5. MOTOR FINISH: BLACK EPOXY
6. MOTOR OUTPUT SHAFT: STAINLESS STEEL
7. INCHES (MILLIMETERS)

FAILSAFE BRAKE:

MIN HOLDING TORQUE: 10 IN-LBS
INPUT VOLTAGE: 24 VOLTS

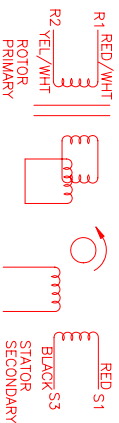


CONNECTION CHART

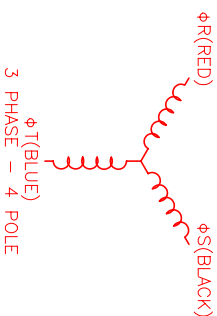
MOTOR/THERM/RES/BRAKE CONNECTOR:
PT02E-14-18P(027)
(270-00024)

MTR/THERM/RES/BRK WIRE LEADS	PIN	WIRE FUNCTION	WIRE COLOR
A	φR	RED	RED
B	φS	BLACK	BLACK
C	φT	BLUE	BLUE
D	PE GND	GRN/YEL	GRN/YEL
U	THERM	BLACK	BLACK
N	THERM	BLACK	BLACK
H	SIN	YELLOW	YELLOW
G	COS GND	BLACK	BLACK
S	COS	RED	RED
F	SIN GND	BLUE	BLUE
R	REF GND	YEL/WHIT	YEL/WHIT
E	REF	RED/WHIT	RED/WHIT
J	RES SHLD	GRN/YEL	GRN/YEL
K	BRK (+)	DIODE	DIODE
L	BRK (-)	IN4007	IN4007
M	BRK SHLD	-	-
P	-	-	-
T	-	-	-

PT02E-14-18P(027)
MATING CONNECTOR:
PT06E-14-18S(476)



SCHEMATIC DRAWING FOR
BRUSHLESS RESOLVER



DATE: 3/7/REV/110/ENG/RES/CN/BRK	DRAWING NUMBER: MPM664BTF6G1R		
REVISIONS			
REV.	DESCRIPTION	DATE	APP'D.
	PRELIMINARY	12/8/00	AJS

NO. PART NUMBER	DESCRIPTION	QTY.
UNLESS SPECIFIED		
DESIGN: AJS # 205	MTS Automation Division	
DESIGN: AJS # 202		
DESIGN: AJS # 172		
DESIGN: AJS		
DATE: 12/8/00	TITLE: "B"/TRAP/110/ENG/RES/CN/BRK	REV:
CHECKED:	MATERIAL:	
APPROVED:	DRAWING NUMBER: MPM664BTF6G1R	SCALE: 1:1