

MOTOR DATA @ 110 VAC (TRAP)		UNITS	VALUE
MOTOR PARAMETERS			
HORSEPOWER	HP RATED	HP	0.36
	KW RATED	KW	0.27
MAX. OPERATING SPEED	N MAX	RPM	5500
SPEED @ RATED TORQUE	N RATED	RPM	4500
* CONTINUOUS RATED TORQUE @ 4500 RPM	IN-LBS[In]	IN-LBS[In]	5.01.561
* CONTINUOUS STALL TORQUE	IN-LBS[In]	IN-LBS[In]	7.51.851
CONTINUOUS LINE CURRENT	AMPS	AMPS	3.8
PEAK TORQUE	IN-LBS[In]	IN-LBS[In]	22.512.541
PEAK CURRENT	AMPS	AMPS	11.3
MAX. THEORETICAL ACCEL.	RAD/SEC ²	RAD/SEC ²	175.781
TORQUE SENSITIVITY	KI [IN-LBS/AMP][Nm/AMP]	KI [IN-LBS/AMP][Nm/AMP]	2.01.231
BACK EMF (LINE TO LINE)	±10%	Vrms/Krpm	17.8
D.C. RESISTANCE (P-P)	±10%	OHMS	5.2
INDUCTANCE (P-P)	±10%	MILLIHENRIES	7.0
ROTOR INERTIA	Jm	IN-LBS-SEC ² [Kg-M ²]	0.00012810.00001451
STATIC FRICTION	Tf	IN-LBS[In]	.651.0731

CONNECTION CHART			
MOTOR/THERM CONNECTOR: BEGA089NN00000007000 (270-00236)			
PIN	WIRE FUNCTION	WIRE COLOR	WIRE LEADS
1	ΦR(U1)	RED	RED
2	PE GND	GRN/YEL	BLACK
3	ΦS(W1)	BLACK	BLACK
4	ΦT(V1)	BLUE	BLUE
A	-	-	-
B	-	-	-
C	THERM	BLACK	BLACK
D	THERM	BLACK	BLACK

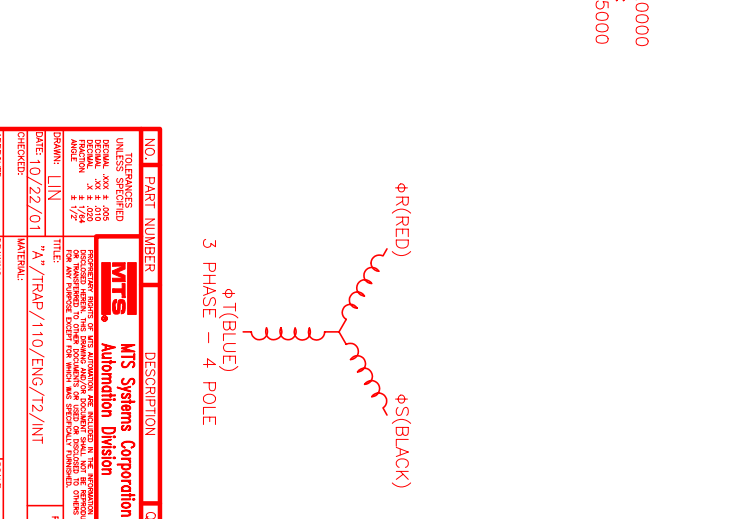
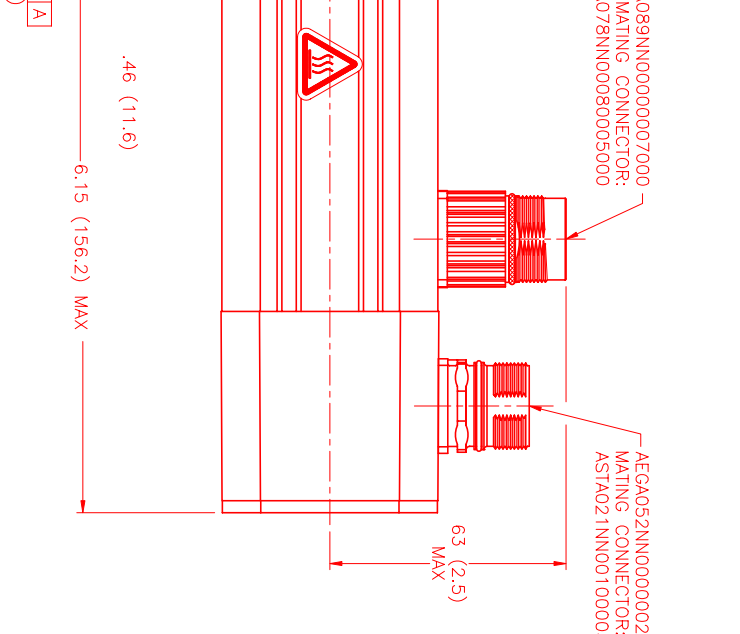
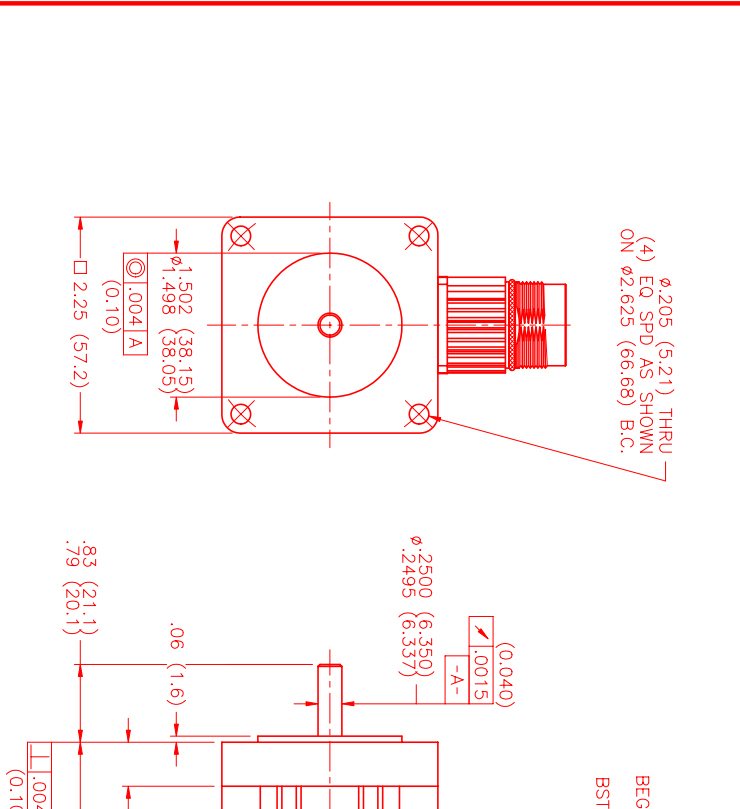
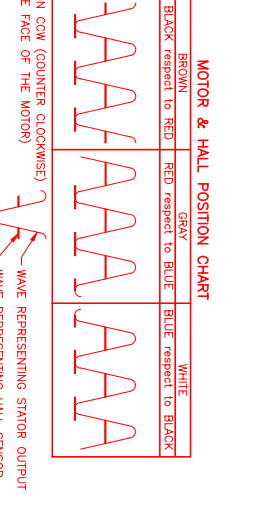
ENCODER CONNECTOR:			
AEGA052NN00000020000 (270-00257)			
PIN	WIRE FUNCTION	WIRE COLOR	WIRE LEADS
1	GND(OV)	BLACK	BLACK
2	CH A(A)	BLUE/BLK	BLUE/BLK
3	CH A(A)	BLUE	BLUE
4	CH B(B)	GREEN	GREEN
5	CH B(B)	GRN/BLK	GRN/BLK
6	CH Z(Z)	YELLOW	YELLOW
7	CH Z(Z)	YEL/BLK	YEL/BLK
8	+5V(+5V)	RED	RED
9	-	-	-
10	CH U(ULG U)	BROWN	BROWN
11	CH V(ULG V)	GRAY	GRAY
12	CH W(ULG W)	WHITE	WHITE

- *25°C AMBIENT WITH A MAXIMUM CASE TEMPERATURE OF 100°C ON MOTOR. MOTOR MOUNTED ON A 10" X 10" X 1/4" ALUMINUM HEATSINK. THERMOSTAT IN STATOR WINDINGS WILL OPEN IF WINDING TEMPERATURE EXCEEDS 155°C. THIS ALLOWS FOR AN APPROXIMATE +10% HEADROOM IN THE CONTINUOUS TORQUE RATING BEFORE THERMOSTAT OPENS.
- MECHANICAL NOTES:**
1. AXIAL LOAD: 15 LBS MAX
 2. RADIAL LOAD: 20 LBS MAX @ 1" FROM FACE
 3. MOTOR SEALED TO IP65.
 4. MOTOR WEIGHT: 3.1 LBS [1.4 Kg]
 5. MOTOR FINISH: BLACK EPOXY
 6. MOTOR OUTPUT SHAFT: STAINLESS STEEL
 7. MILLIMETERS (INCHES)

ENCODER: (290-00056)
OH35-2000P4-L6-SV

BEGA089NN00000007000
MATING CONNECTOR:
BSTA078NN00080005000

AEGA052NN00000020000
MATING CONNECTOR:
ASTA021NN00100005000



NO.	PART NUMBER	DESCRIPTION	QTY.
1	MOTOR	MOTOR	1

UNLESS SPECIFIED OTHERWISE

DECIMAL: .001

FRACTIONAL: 1/32

DATE: 10/22/01

SCALE: 1:1

APPROVED: [Signature]

REV.	DESCRIPTION	DATE	APP.
1	PRELIMINARY	11/7/01	LIN

DATE: 11/7/01

REVISIONS

FORMING NUMBER: MPM663ATF6JN2N