

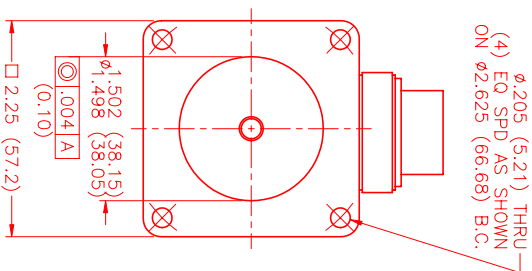
MOTOR DATA @ 110 VAC (TRAP)

MOTOR PARAMETERS	UNITS	VALUE
HORSEPOWER	HP	0.36
KILOWATTS	KW	0.27
MAX. OPERATING SPEED	N. MAX RPM	5500
SPEED @ RATED TORQUE	N RATED RPM	4500
* CONTINUOUS RATED TORQUE @ 4500 RPM	IN-LBS [Nm]	5.0 [.56]
* CONTINUOUS STALL TORQUE	IN-LBS [Nm]	7.5 [.85]
CONTINUOUS LINE CURRENT	AMPS	3.8
PEAK TORQUE	IN-LBS [Nm]	22.5 [2.54]
PEAK CURRENT	AMPS	11.3
MAX. THEORETICAL ACCEL.	RAD/SEC ²	175,781
TORQUE SENSITIVITY	Kt [IN-LBS/AMP [Nm/AMP]	2.0 [.23]
BACK EMF (LINE TO LINE)	Vrms/Krpm	17.8
D.C. RESISTANCE (P-P)	OHMS	5.2
INDUCTANCE (P-P)	MILLIHENRIES	7.0
ROTOR INERTIA	Jm [IN-LBS-SEC ²] [Kg-M ²]	.000128 [.0000145]
STATIC FRICTION	Tf [IN-LBS] [Nm]	.65 [.073]

*25°C AMBIENT WITH A MAXIMUM CASE TEMPERATURE OF 100°C ON MOTOR. MOTOR MOUNTED ON A 10" X 10" X 10" X 1/4" ALUMINUM HEATSINK. THERMOSTAT IN STATOR WINDINGS WILL OPEN IF WINDING TEMPERATURE EXCEEDS 155°C. THIS ALLOWS FOR AN APPROXIMATE +10% HEADROOM IN THE CONTINUOUS TORQUE RATING BEFORE THERMOSTAT OPENS.

MECHANICAL NOTES:

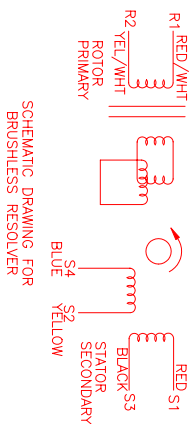
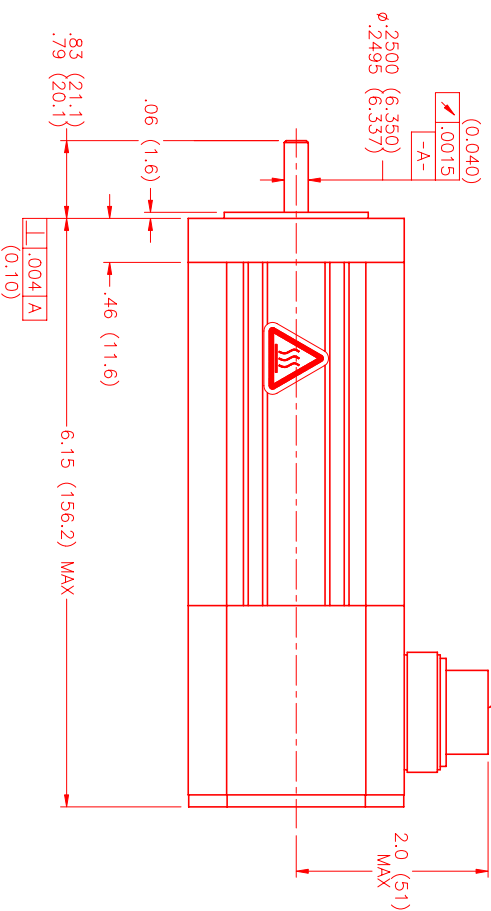
1. AXIAL LOAD: 15 LBS MAX
2. RADIAL LOAD: 20 LBS MAX @ 1" FROM FACE
3. MOTOR SEALED TO IP65.
4. MOTOR WEIGHT: 3.1 LBS. [1.4 Kg]
5. MOTOR FINISH: BLACK EPOXY
6. MOTOR OUTPUT SHAFT: STAINLESS STEEL
7. INCHES (MILLIMETERS)



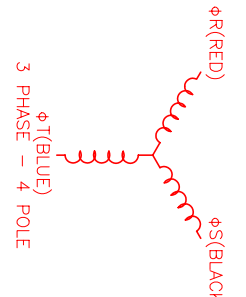
CONNECTION CHART MOTOR/THERM/RESOLVER CONNECTOR: PT02E-14-18P(027) (270-00024)

MTR/THERM/RES	WIRE FUNCTION	WIRE COLOR
A	ΦR	RED
B	ΦS	BLACK
C	ΦT	BLUE
D	PE GND	GRN/YEL
U	THERM	BLACK
N	THERM	BLACK
H	SIN	YELLOW
G	COS GND	BLACK
S	COS	RED
F	SIN GND	BLUE
R	REF GND	YEL/WHI
E	REF	RED/WHI
J	RES SHLD	GRN/YEL
K	-	-
L	-	-
M	-	-
P	-	-
T	-	-

PT02E-14-18P(027)
MATING CONNECTOR:
PT06E-14-18S(476)



SCHEMATIC DRAWING FOR BRUSHLESS RESOLVER



3 PHASE - 4 POLE

TITLE: X/T/RA/110/ENG/RES/CONN DRAWING NUMBER: MPM663ATF6G1N	
REVISIONS	
REV. 1	DESCRIPTION: DATE: 4/12/00 APP'D: LIN
REV. 2	PRELIMINARY
NO. 1	PART NUMBER: DESCRIPTION: QTY:
UNLESS SPECIFIED	
DECIMAL: .001	
FRACTIONAL: 1/32	
ANGLE: 1/2°	
DATE: 11/25/98	TITLE: "A" /TRAP/110/ENG/RES/CONN
DRAWN: MVS	CHECKED: MVS
APPROVED: MVS	MATERIAL: MPM663ATF6G1N
SCALE: 1:1	