

MOTOR DATA @ 110 VAC (TRAP)

MOTOR PARAMETERS	UNITS	VALUE
HORSEPOWER	HP	.16
KILOWATTS	KW	.12
MAX. OPERATING SPEED	N. MAX RPM	3000
SPEED @ RATED TORQUE	RPM	2500
* CONTINUOUS RATED TORQUE @ 2500 RPM	IN-LBS[Nm]	4.01(.45)
* CONTINUOUS STALL TORQUE	IN-LBS[Nm]	5.0(.56)
CONTINUOUS LINE CURRENT	AMPS	1.6
PEAK TORQUE	IN-LBS[Nm]	15.1(1.7)
PEAK CURRENT	AMPS	4.7
MAX. THEORETICAL ACCEL.	RAD/SEC ²	123,770
TORQUE SENSITIVITY	Kt [IN-LBS/AMP] Nm/AMP	3.2(.36)
BACK EMF (LINE TO LINE)	Vrms/Krpm	28.3
D.C. RESISTANCE (P-P)	OHMS	18.5
INDUCTANCE (P-P)	MILLIHENRIES	26.4
ROTOR INERTIA W/ BRAKE	Jm [IN-LBS-SEC ²] Kg-M ²	.000122(.0000137)
STATIC FRICTION	Tf [IN-LBS] [Nm]	.5[.06]

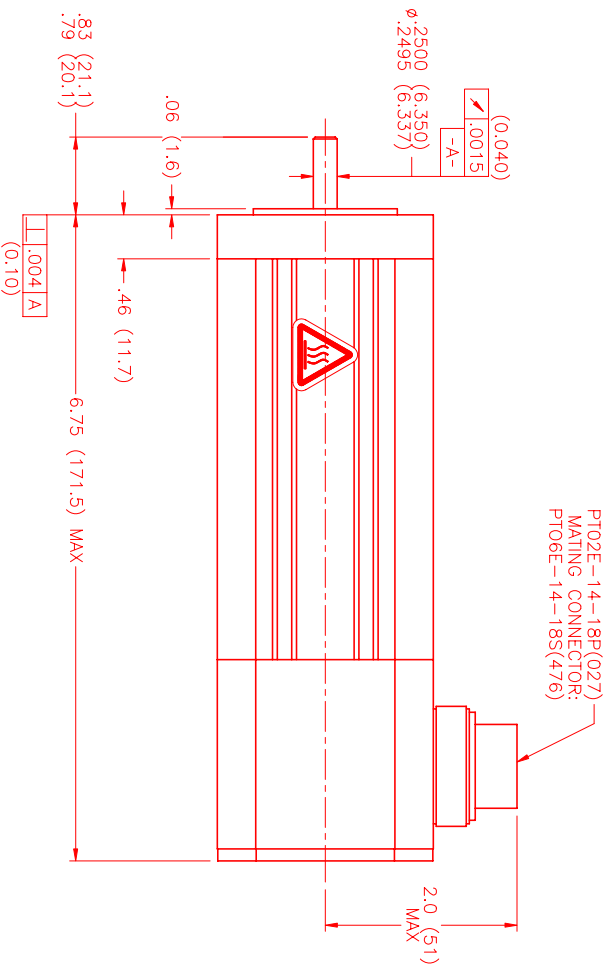
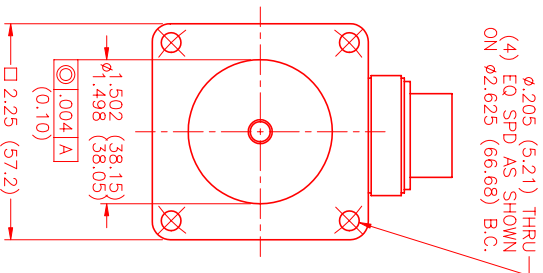
*25°C AMBIENT WITH A MAXIMUM CASE TEMPERATURE OF 100°C ON MOTOR. MOTOR MOUNTED ON A 10" X 10" X 1/4" ALUMINUM HEATSINK. THERMOSTAT IN STATOR WINDINGS WILL OPEN IF WINDING TEMPERATURE EXCEEDS 155°C. THIS ALLOWS FOR AN APPROXIMATE +10% HEADROOM IN THE CONTINUOUS TORQUE RATING BEFORE THERMOSTAT OPENS.

MECHANICAL NOTES:

1. AXIAL LOAD: 15 LBS MAX
2. RADIAL LOAD: 20 LBS MAX @ 1" FROM FACE
3. MOTOR SEALED TO IP65.
4. MOTOR WEIGHT: 3.5 LBS [1.6 Kg]
5. MOTOR FINISH: BLACK EPOXY
6. MOTOR OUTPUT SHAFT: STAINLESS STEEL
7. INCHES (MILLIMETERS)

FAILSAFE BRAKE:

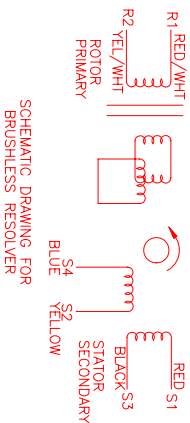
MIN HOLDING TORQUE: 10 IN-LBS
INPUT VOLTAGE: 24 VOLTS



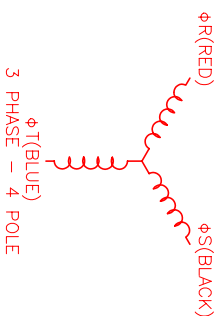
CONNECTION CHART MOTOR/THERM/RES/BRAKE CONNECTOR: PT02E-14-18P(027) (270-00024)

MTR/THERM/RES/BRK	WIRE FUNCTION	WIRE COLOR	WIRE LEADS
A	φR	RED	RED
B	φS	BLACK	BLACK
C	φT	BLUE	BLUE
D	PE GND	GRN/YEL	GRN/YEL
U	THERM	BLACK	BLACK
N	THERM	BLACK	BLACK
H	SIN	YELLOW	YELLOW
G	COS GND	BLACK	BLACK
S	COS	RED	RED
F	SIN GND	BLUE	BLUE
R	REF GND	YEL/WHI	YEL/WHI
E	REF	RED/WHI	RED/WHI
J	RES SHLD	GRN/YEL	GRN/YEL
K	BRK (+)	DIODE	DIODE
L	BRK (-)	IN4007	IN4007
M	BRK SHLD	-	-
P	-	-	-
T	-	-	-

PT02E-14-18P(027)
MATING CONNECTOR:
PT06E-14-18S(476)



SCHEMATIC DRAWING FOR
BRUSHLESS RESOLVER



REV.	DESCRIPTION	DATE	APP'D.
PRELIMINARY		12/14/00	MVS

REVISIONS

REV.	DESCRIPTION	DATE	APP'D.
PRELIMINARY		12/14/00	MVS

NO.	PART NUMBER	DESCRIPTION	QTY.
1	MPM662BTF6G1R	MOTOR	1

UNLESS SPECIFIED	DESCRIPTION
STANDARD	MTS Systems Corporation
DESIGN	Automation Division
DATE	12/14/00
SCALE	1:1
CHECKED	MVS
APPROVED	MVS