

MOTOR DATA @ 230 VAC (SINE)

MOTOR PARAMETERS	UNITS	VALUE
HORSEPOWER	HP	0.22
KILOWATTS	KW	0.16
MAX. OPERATING SPEED	N. MAX RPM	5000
SPEED @ RATED TORQUE	RPM	4000
* CONTINUOUS RATED TORQUE @ 4000 RPM	IN-LBS [Nm]	3.4 [0.38]
* CONTINUOUS STALL TORQUE	IN-LBS [Nm]	5.0 [0.56]
CONTINUOUS LINE CURRENT	AMPS (RMS/φ)	1.1
PEAK TORQUE	IN-LBS [Nm]	15.1 [1.7]
PEAK CURRENT	AMPS (RMS/φ)	3.3
MAX. THEORETICAL ACCEL.	RAD/SEC ²	123,770
TORQUE SENSITIVITY	Kt IN-LBS/AMP (RMS/φ) [Nm/AMP (RMS/φ)]	4.50 [0.51]
BACK EMF (LINE TO LINE)	Vrms/Krpm	28.3
D.C. RESISTANCE (P-P)	OHMS	18.5
INDUCTANCE (P-P)	MILLIHENRIES	26.4
ROTOR INERTIA W/ BRAKE	Jm [IN-LBS-SEC ²] [Kg-M ²]	0.000122 [0.0000137]
STATIC FRICTION	Tf [IN-LBS] [Nm]	0.5 [0.06]

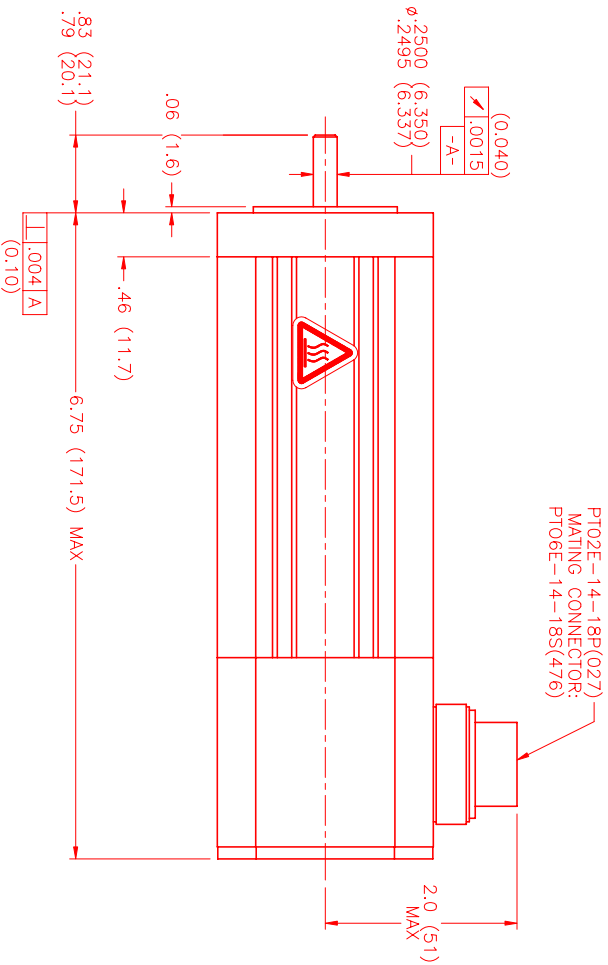
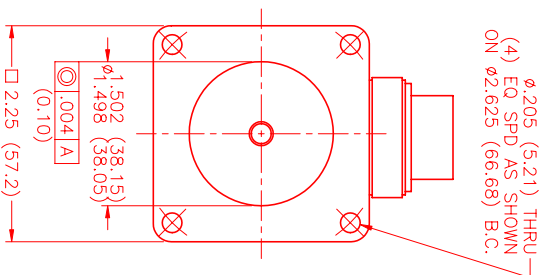
*25°C AMBIENT WITH A MAXIMUM CASE TEMPERATURE OF 100°C ON MOTOR. MOTOR MOUNTED ON A 10" X 10" X 1/4" ALUMINUM HEATSINK. THERMOSTAT IN STATOR WINDINGS WILL OPEN IF WINDING TEMPERATURE EXCEEDS 155°C. THIS ALLOWS FOR AN APPROXIMATE +10% HEADROOM IN THE CONTINUOUS TORQUE RATING BEFORE THERMOSTAT OPENS.

MECHANICAL NOTES:

- AXIAL LOAD: 15 LBS MAX
- RADIAL LOAD: 20 LBS MAX @ 1" FROM FACE
- MOTOR SEALED TO IP65.
- MOTOR WEIGHT: 3.5 LBS [1.6 Kg]
- MOTOR FINISH: BLACK EPOXY
- MOTOR OUTPUT SHAFT: STAINLESS STEEL
- INCHES (MILLIMETERS)

FAILSAFE BRAKE:

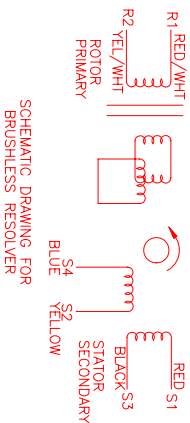
MIN HOLDING TORQUE: 10 IN-LBS
INPUT VOLTAGE: 24 VOLTS



CONNECTION CHART MOTOR/THERM/RES/BRAKE CONNECTOR: PT02E-14-18P(027) (270-00024)

MTR/THERM/RES/BRK	WIRE FUNCTION	WIRE COLOR	WIRE LEADS
A	φR	RED	RED
B	φS	BLACK	BLACK
C	φT	BLUE	BLUE
D	PE GND	GRN/YEL	GRN/YEL
U	THERM	BLACK	BLACK
N	THERM	BLACK	BLACK
H	SIN	YELLOW	YELLOW
G	COS GND	BLACK	BLACK
S	COS	RED	RED
F	SIN GND	BLUE	BLUE
R	REF GND	YEL/WHI	YEL/WHI
E	REF	RED/WHI	RED/WHI
J	RES SHLD	GRN/YEL	GRN/YEL
K	BRK (+)	DIODE	DIODE
L	BRK (-)	IN4007	IN4007
M	BRK SHLD	-	-
P	-	-	-
T	-	-	-

PT02E-14-18P(027)
MATING CONNECTOR:
PT06E-14-18S(476)



SCHEMATIC DRAWING FOR
BRUSHLESS RESOLVER

REV#	DESCRIPTION	DATE	APP'D.
PRELIMINARY		7/13/01	MS

REVISIONS

REV#	DESCRIPTION	DATE	APP'D.
PRELIMINARY		7/13/01	MS

NO.	PART NUMBER	DESCRIPTION	QTY.
1	PT02E-14-18P(027)	MOTOR/THERM/RES/BRAKE CONNECTOR	1

UNLESS SPECIFIED	DESCRIPTION
DRINKING WATER	FOR ALL PURPOSES
DRINKING WATER	FOR ALL PURPOSES
DRINKING WATER	FOR ALL PURPOSES
DRINKING WATER	FOR ALL PURPOSES

DATE	7/13/01
DESIGNED BY	MS
CHECKED BY	MS
APPROVED BY	MS

TITLE	"B"/SINE/230/ENG/RES/CON/BRK
MATERIAL	STAINLESS STEEL
SCALE	1:1

DATE	7/13/01
DESIGNED BY	MS
CHECKED BY	MS
APPROVED BY	MS

DATE	7/13/01
DESIGNED BY	MS
CHECKED BY	MS
APPROVED BY	MS