

MOTOR DATA @ 460 VAC (SINE)

MOTOR PARAMETERS	UNITS	VALUE
HORSEPOWER	HP RATED	28.8
KILOWATTS	KW RATED	21.5
MAX. OPERATING SPEED	N MAX	3000
SPEED @ RATED TORQUE	N RATED	2400
* CONTINUOUS RATED TORQUE @ 2400 RPM	IN-LBS [Nm]	757.0 [85.0]
* CONTINUOUS STALL TORQUE	IN-LBS [Nm]	880.0 [98.8]
CONTINUOUS LINE CURRENT	AMPS (RMS) (φ)	34.6
PEAK TORQUE	IN-LBS [Nm]	2640.0 [296.0]
PEAK CURRENT	AMPS (RMS) (φ)	106.1
MAX. THEORETICAL ACCEL.	RAD/SEC ²	23.677
TORQUE SENSITIVITY	Kt [IN-LBS/AMP (RMS) (φ) / Nm / AMP (RMS) (φ)]	24.9 [2.81]
BACK EMF (LINE TO LINE)	Vrms / Krpm	158.0
D.C. RESISTANCE (P-P)	OHMS	2.29
INDUCTANCE (P-P)	MILLIHENRIES	4.8
ROTOR INERTIA W./BRAKE	Jm [IN-LBS-SEC ² [Kg-M ²]	.1115 [0.126]
STATIC FRICTION	Tf [IN-LBS] [Nm]	11.4 [1.3]

*25°C AMBIENT WITH A MAXIMUM CASE TEMPERATURE OF 100°C ON MOTOR. MOTOR MOUNTED ON A 14" X 14" X 14" X 3/4" ALUMINUM HEATSINK. THERMOSTAT IN STATOR WINDINGS WILL OPEN IF WINDING TEMPERATURE EXCEEDS 155°C. THIS ALLOWS FOR AN APPROXIMATE +10% HEADROOM IN THE CONTINUOUS TORQUE RATING BEFORE THERMOSTAT OPENS.

MECHANICAL NOTES:

- AXIAL LOAD: 100 LBS MAX
- RADIAL LOAD: 250 LBS MAX @ 1" FROM FACE
- MOTOR SEALED TO IP65.
- MOTOR WEIGHT: 147 LBS. [67 Kg]
- MOTOR FINISH: BLACK EPOXY
- MILLIMETERS (INCHES)

FAILSAFE BRAKE:

MIN HOLDING TORQUE: 90 FT-LBS
INPUT VOLTAGE: 24 VOLTS

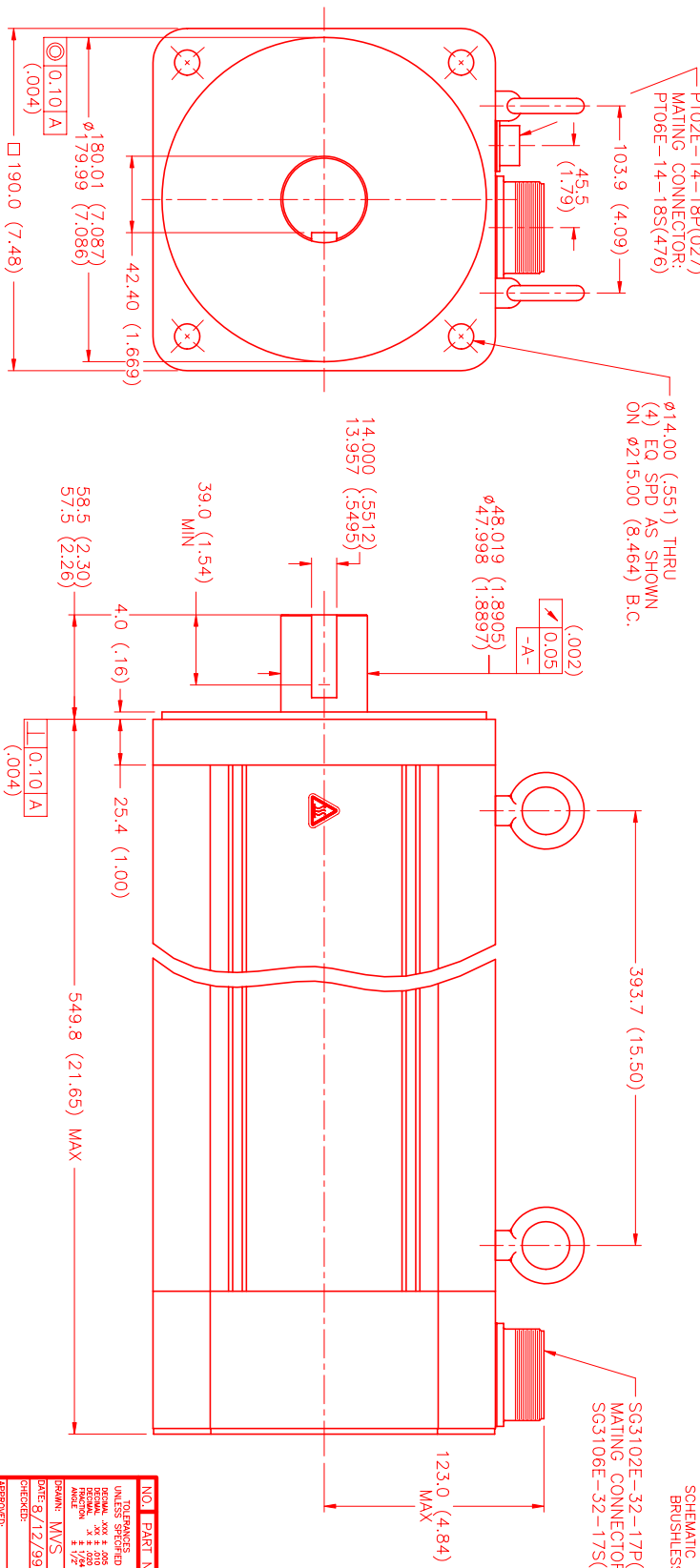
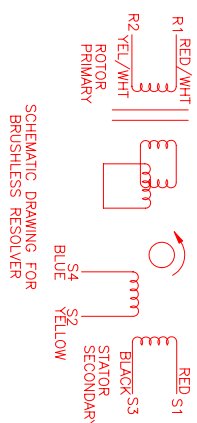
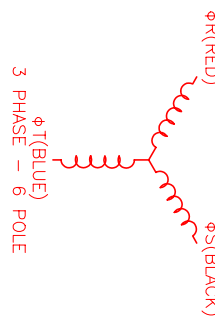
CONNECTION CHART

MOTOR CONNECTOR:
SG3102E-32-17P(027)
(270-00066)

PIN	WIRE FUNCTION	WIRE COLOR	LEADS
A	φR	RED	
B	φS	BLACK	
C	φT	BLUE	
D	PE GND	GRN/YEL	

RES/THERM/BRK CONNECTOR:
PT02E-14-18P(027)
(270-00024)

PIN	WIRE FUNCTION	WIRE COLOR	LEADS
U	THERM	BLACK	
N	THERM	BLACK	
H	SIN	YELLOW	
G	COS GND	BLACK	
S	COS	RED	
F	SIN GND	BLUE	
R	REF GND	YEL/WHI	
E	REF	RED/WHI	
D	RES SHLD	GRN/YEL	
P	GND	GRN/YEL	
A	BRK (+)	DIODE	
B	BRK (-)	1N4007	
C	BRK SHLD	-	
J	-	-	
K	-	-	
L	-	-	
M	-	-	
T	-	-	



SG3102E-32-17P(027)
MATING CONNECTOR:
SG3106E-32-17S(476)

NO.	PART NUMBER	DESCRIPTION	QTY.
1	RES/CONN/BRK	RES/CONN/BRK	1
2	MOTOR	MOTOR	1

UNLESS SPECIFIED	DECIMAL ANG ± .005
FRONT VIEW	± .002
BACK VIEW	± .002
ANGLES	± 1/2°
FINISH	AS SHOWN
DATE: 8/12/99	TITLE: "C"/SN/460/MET/RES/CONN/BRK
DESIGNED BY: MVS	CHECKED BY: MVS
APPROVED BY:	DRAWING NUMBER: MPM1903CSU7G1R
	SCALE: 1/2:1

DATE: 8/12/99	REV: PRELIMINARY
DESCRIPTION: RES/CONN/BRK	DATE: 8/17/00
REVISIONS:	APPD: LIN
DRAWING NUMBER: MPM1903CSU7G1R	

MTS Systems Corporation
Automation Division