

MOTOR DATA @ 230 VAC (TRAP)

MOTOR PARAMETERS	UNITS	VALUE
HORSEPOWER	HP RATED	28.8
KILOWATTS	KW RATED	21.5
MAX. OPERATING SPEED	N. MAX RPM	3000
SPEED @ RATED TORQUE	RPM	2400
* CONTINUOUS RATED TORQUE @ 2400 RPM	IN-LBS[Nm]	757.0[85.0]
* CONTINUOUS STALL TORQUE	IN-LBS[Nm]	880.0[98.8]
CONTINUOUS LINE CURRENT	AMPS	98.8
PEAK TORQUE	IN-LBS[Nm]	1780.0[200.0]
PEAK CURRENT	AMPS	200.0
MAX. THEORETICAL ACCEL.	RAD/SEC ²	17,282
TORQUE SENSITIVITY	Kt IN-LBS/AMP[Nm/AMP]	8.9[1.0]
BACK EMF (LINE TO LINE)	Vrms/Krpm	79.0
D.C. RESISTANCE (P-P)	OHMS	.06
INDUCTANCE (P-P)	MILLIHENRIES	1.00
ROTOR INERTIA	Jm IN-LBS-SEC ² [Kg-M ²]	.103[.0116]
STATIC FRICTION	Tf IN-LBS[Nm]	11.4[1.3]

*25°C AMBIENT WITH A MAXIMUM CASE TEMPERATURE OF 100°C ON MOTOR. MOTOR MOUNTED ON A 14" X 14" X 3/4" ALUMINUM HEATSINK. THERMOSTAT IN STATOR WINDINGS WILL OPEN IF WINDING TEMPERATURE EXCEEDS 155°C. THIS ALLOWS FOR AN APPROXIMATE +10% HEADROOM IN THE CONTINUOUS TORQUE RATING BEFORE THERMOSTAT OPENS.

- MECHANICAL NOTES:**
- AXIAL LOAD: 100 LBS MAX
 - RADIAL LOAD: 250 LBS MAX @ 1" FROM FACE
 - MOTOR SEALED TO IP65
 - MOTOR WEIGHT: 136 LBS [62 kg]
 - MOTOR FINISH: BLACK EPOXY
 - MILLIMETERS (INCHES)

ENCODER: (290-00052)
OH48-2000P6-L6-5V

CONNECTION CHART

MOTOR CONNECTOR:
SG3102E-32-17P(027)
(270-00066)

MOTOR WIRE LEADS	WIRE FUNCTION	WIRE COLOR
A	ΦR	BLACK
B	ΦS	RED
C	ΦT	BLUE
D	PE GND	GRN/YEL

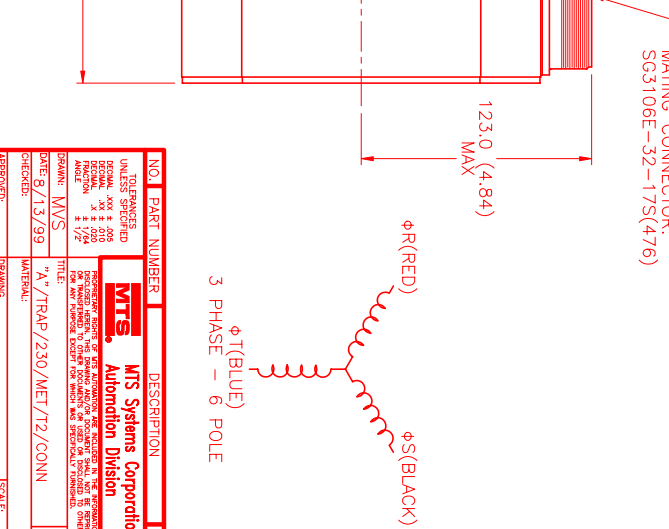
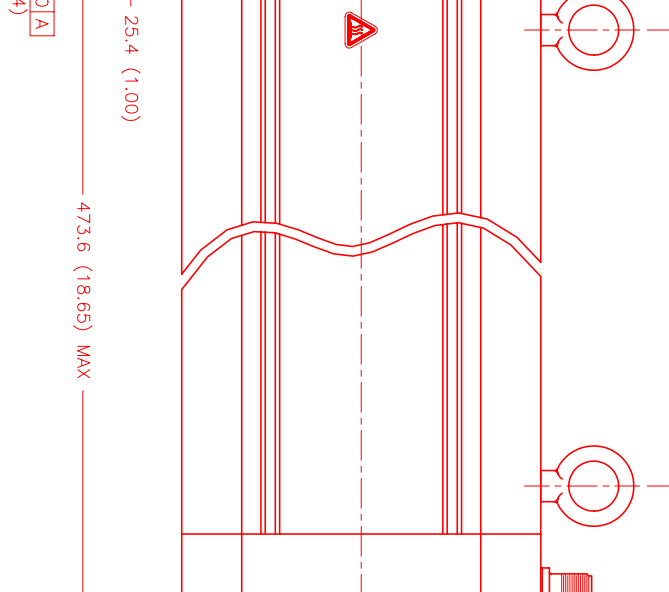
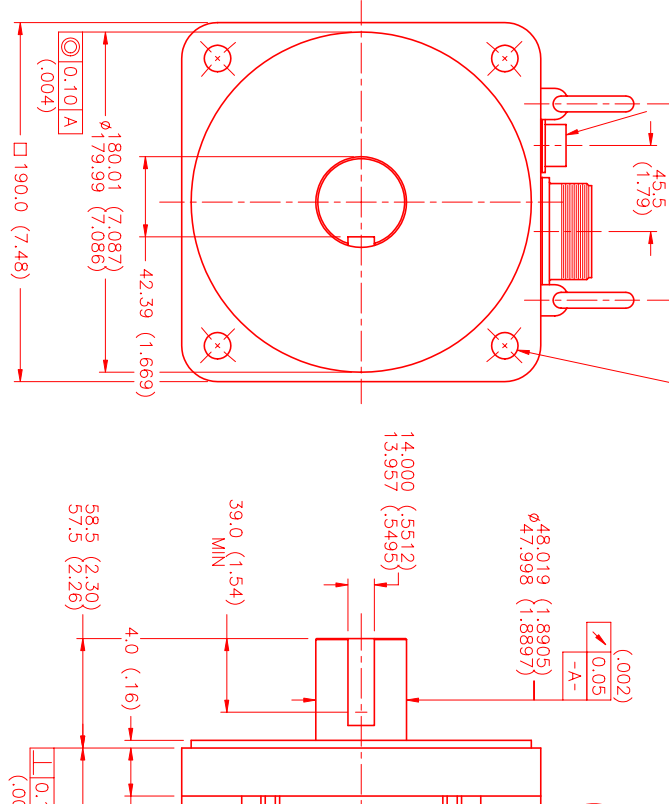
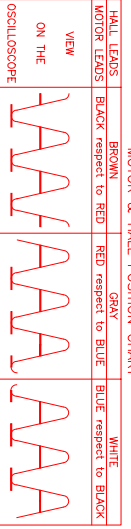
ENCODER/THERM CONNECTOR:

PT02E-14-18P(027)
(270-00024)

ENC/THERM WIRE LEADS	WIRE FUNCTION	WIRE COLOR
T	GROUND	BLACK
K	+5VDC	RED
B	CH A	BLUE
C	CH A'	BLUE/BLK
N	CH B	GREEN
P	CH B'	GRN/BLK
M	CH Z	YELLOW
U	CH Z'	YEL/BLK
E	CH U	BROWN
R	CH U'	BRN/BLK
F	CH V	GRAY
S	CH V'	GRAY/BLK
G	CH W	WHITE
H	CH W'	WHT/BLK
D	GND/CABLE	SHLD
A	THERM	BLACK
L	THERM	BLACK
J	GND	GRN/YEL

MOTOR & HALL POSITION CHART

HALL LEADS	BROWN	GRAY	WHITE
MOTOR LEADS	BLACK respect to RED	RED respect to BLUE	BLUE respect to BLACK



NO.	PART NUMBER	DESCRIPTION	QTY.
1	SG3102E-32-17P(027)	MOTOR	1
2	PT02E-14-18P(027)	ENCODER/THERM CONNECTOR	1
3	OH48-2000P6-L6-5V	ENCODER	1

REV.	DESCRIPTION	DATE	APPD.
1	PRELIMINARY	8/13/99	MVS

DATE: 8/13/99
DRAWN: MVS
CHECKED: MVS
APPROVED: MVS

SCALE: 1/2=1