

MOTOR DATA @ 230 VAC (TRAP)

MOTOR PARAMETERS	UNITS	VALUE
HORSEPOWER	HP	28.8
KILOWATTS	KW	21.5
MAX. OPERATING SPEED	N MAX RPM	3000
SPEED @ RATED TORQUE	N RATED RPM	2400
* CONTINUOUS RATED TORQUE @ 2400 RPM	IN-LBS[Nm]	757.0[85.0]
* CONTINUOUS STALL TORQUE	IN-LBS[Nm]	880.0[98.8]
CONTINUOUS LINE CURRENT	AMPS	98.8
PEAK TORQUE	IN-LBS[Nm]	1780.0[200.0]
PEAK CURRENT	AMPS	200.0
MAX. THEORETICAL ACCEL.	RAD/SEC ²	17,282
TORQUE SENSITIVITY	Kt[IN-LBS/AMP][Nm/AMP]	8.9[1.0]
BACK EMF (LINE TO LINE)	Vrms/Krpm	79.0
D.C. RESISTANCE (P-P)	OHMS	0.06
INDUCTANCE (P-P)	MILLIHENRIES	1.00
ROTOR INERTIA	Jm[IN-LBS-SEC ²][Kg-M ²]	.103[.016]
STATIC FRICTION	Tf[IN-LBS][Nm]	11.4[1.3]

*25°C AMBIENT WITH A MAXIMUM CASE TEMPERATURE OF 100°C ON MOTOR. MOTOR MOUNTED ON A 14" X 14" X 3/4" ALUMINUM HEATSINK. THERMOSTAT IN STATOR WINDINGS WILL OPEN IF WINDING TEMPERATURE EXCEEDS 155°C. THIS ALLOWS FOR AN APPROXIMATE +10% HEADROOM IN THE CONTINUOUS TORQUE RATING BEFORE THERMOSTAT OPENS.

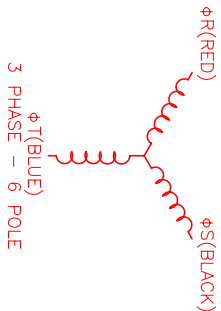
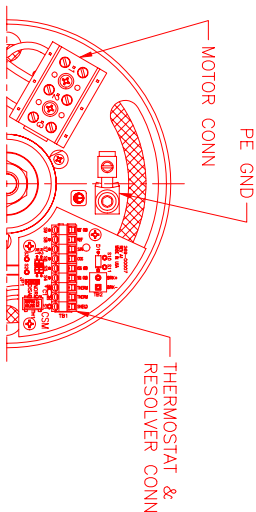
MECHANICAL NOTES:

- AXIAL LOAD: 100 LBS MAX
- RADIAL LOAD: 250 LBS MAX @ 1" FROM FACE
- MOTOR SEALED TO IP65.
- MOTOR WEIGHT: 130 LBS. [59.0 kg]
- MOTOR FINISH: BLACK EPOXY
- MILLIMETERS (INCHES)

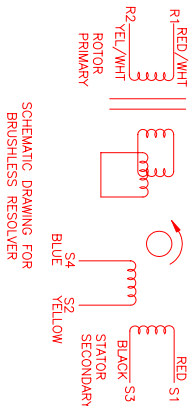
CONNECTION CHART

MOTOR WIRE LEADS	WIRE FUNCTION	WIRE COLOR
1	ΦS	BLACK
2	ΦT	BLUE
3	PE GND	-

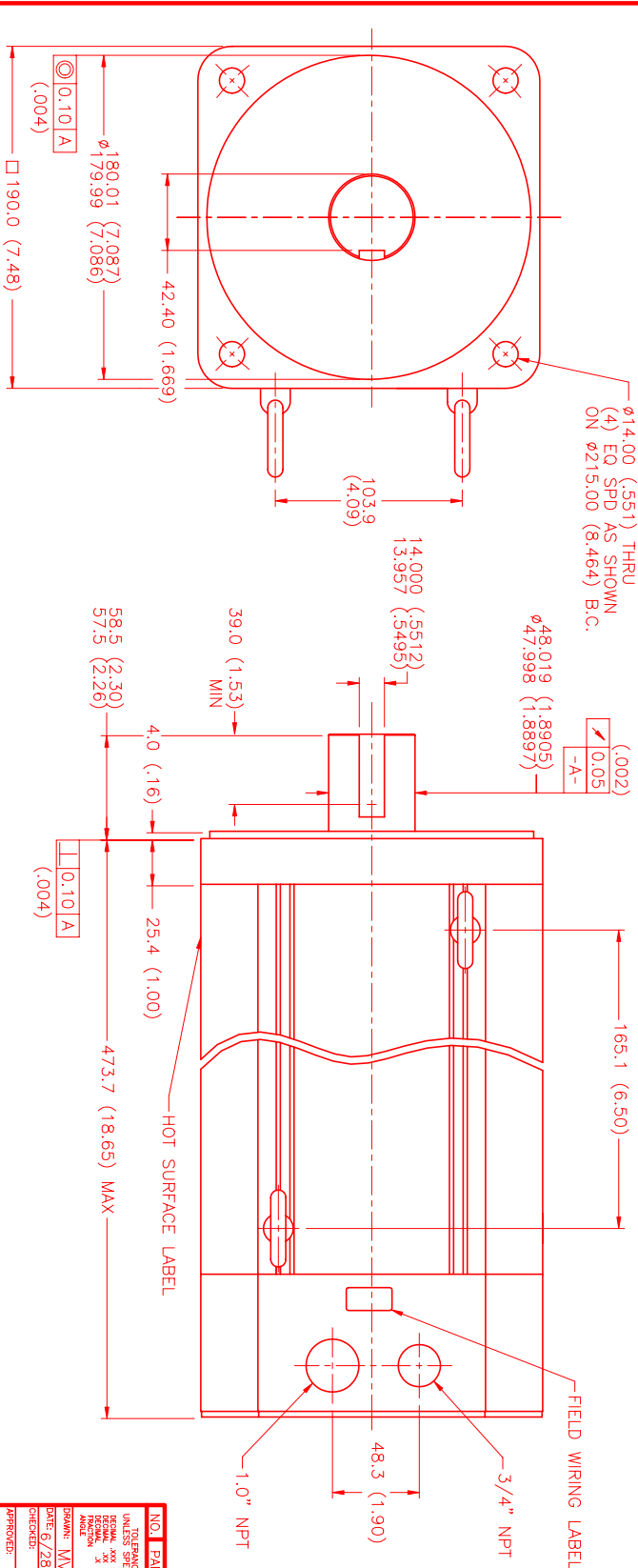
RES/THERM WIRE LEADS	WIRE FUNCTION	WIRE COLOR
S9	REF GND	YEL/WHI
S8	REF	RED/WHI
S7	SIN	YELLOW
S6	COS	RED
S5	COS GND	BLACK
S4	SIN GND	BLUE
S3	THERM	BLACK
S2	THERM	BLACK
S1	RES SHLD	GRN/YEL



3 PHASE - 6 POLE



SCHEMATIC DRAWING FOR BRUSHLESS RESOLVER



NO.	PART NUMBER	DESCRIPTION	QTY.
1	MPM1903ATG7G3N	TRAP	1

REV.	DESCRIPTION	DATE	APP.
PRELIMINARY		8/12/99	MVS

NO.	PART NUMBER	DESCRIPTION	QTY.
1	MPM1903ATG7G3N	TRAP	1

NO.	PART NUMBER	DESCRIPTION	QTY.
1	MPM1903ATG7G3N	TRAP	1

MTS Automation Division

DATE: 6/28/99

APPROVED: MVS

SCALE: 1/2=1