

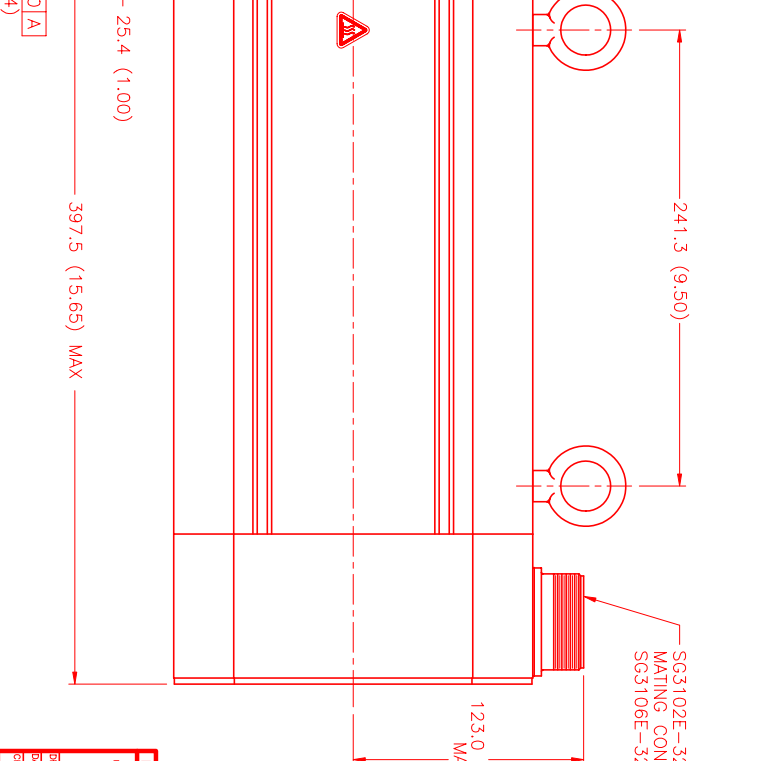
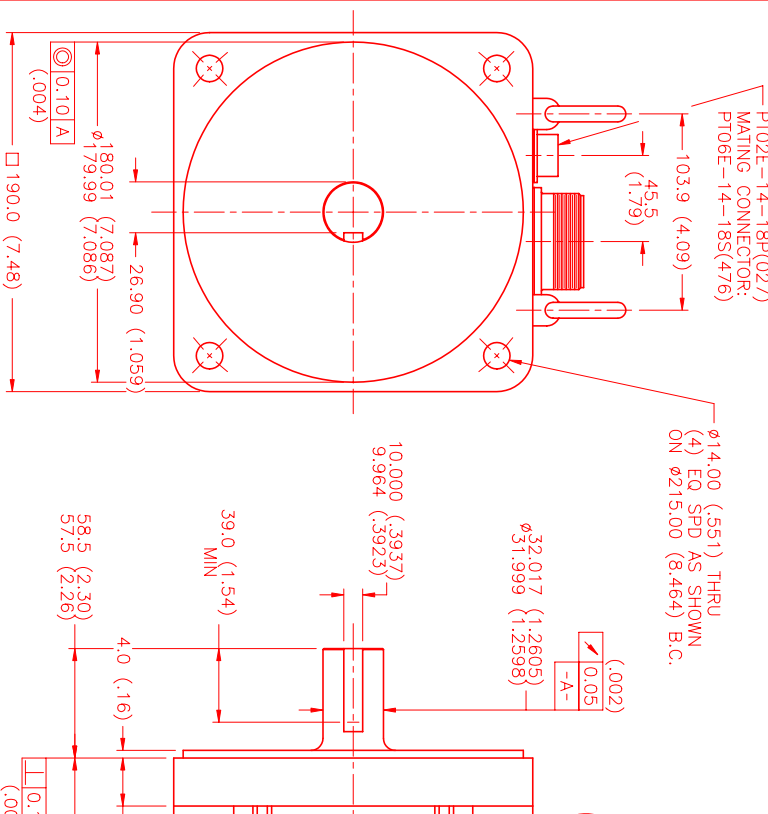
MOTOR DATA @ 460 VAC (SINE)

| MOTOR PARAMETERS | UNITS | VALUE |
|--------------------------------------|---|-----------------------------|
| HORSEPOWER | HP RATED | 10.4 |
| KILOWATTS | KW RATED | 7.8 |
| MAX. OPERATING SPEED | N MAX | 1500 |
| SPEED @ RATED TORQUE | N RATED | 1200 |
| * CONTINUOUS RATED TORQUE @ 1200 RPM | IN-LBS [Nm] | 550.0 [61.8] |
| * CONTINUOUS STALL TORQUE | IN-LBS [Nm] | 640.0 [71.9] |
| CONTINUOUS LINE CURRENT | AMPS [RMS/φ] | 12.7 |
| PEAK CURRENT | AMPS [RMS/φ] | 1920.0 [215.0] |
| MAX. THEORETICAL ACCEL. | RAD/SEC ² | 38.2 |
| TORQUE SENSITIVITY | Kt [N-LBS/AMPERE/φ] [Nm/AMPERE/φ] | 26.890 |
| BACK EMF (LINE TO LINE) | Vrms/Krpm | 49.5 [5.59] |
| D.C. RESISTANCE (P-P) | OHMS | 316.0 |
| INDUCTANCE (P-P) | MILLIHENRIES | 2.0 |
| ROTOR INERTIA | Jm [N-LBS-SEC ²] [Kg-M ²] | 29.3 |
| STATIC FRICTION | Tf [N-LBS] [Nm] | .0714 [0.0807] 9.8 [1.1] |

*25°C AMBIENT WITH A MAXIMUM CASE TEMPERATURE OF 100°C ON MOTOR. MOTOR MOUNTED ON A 14" X 14" X 3/4" ALUMINUM HEATSINK. THERMOSTAT IN STATOR WINDINGS WILL OPEN IF WINDING TEMPERATURE EXCEEDS 155°C. THIS ALLOWS FOR AN APPROXIMATE +10% HEADROOM IN THE CONTINUOUS TORQUE RATING BEFORE THERMOSTAT OPENS.

- MECHANICAL NOTES:**
- AXIAL LOAD: 100 LBS MAX
 - RADIAL LOAD: 250 LBS MAX @ 1" FROM FACE
 - MOTOR SEALED TO IP65
 - MOTOR WEIGHT: 100 LBS [45.4 kg]
 - MOTOR FINISH: BLACK EPOXY
 - MILLIMETERS (INCHES)

ENCODER: (290-00107)
OH48-4096P6-16-5V

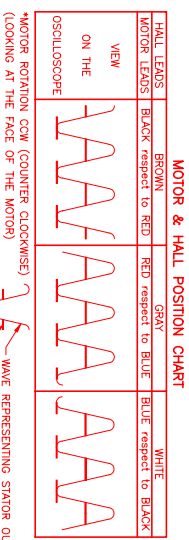
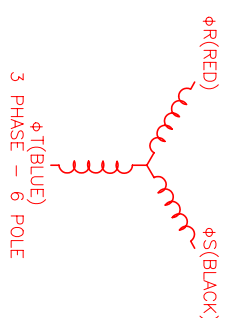


CONNECTION CHART
ENCODER/THERM CONNECTOR:
PT02E-14-18P(027)
(270-00024)

| ENC/THERM | WIRE FUNCTION | WIRE COLOR | LEADS |
|-----------|---------------|------------|-------|
| T | GROUND | BLACK | |
| K | +5VDC | RED | |
| B | CH A | BLUE | |
| C | CH A \ | BLUE/BLK | |
| N | CH B | GREEN | |
| P | CH B \ | GRN/BLK | |
| M | CH Z | YELLOW | |
| U | CH Z \ | YEL/BLK | |
| E | CH U | BROWN | |
| R | CH U \ | BRN/BLK | |
| F | CH V | GRAY | |
| S | CH V \ | GRAY/BLK | |
| G | CH W | WHITE | |
| H | CH W \ | WHT/BLK | |
| D | GND/CABLE | SHLD | |
| A | THERM | BLACK | |
| L | THERM | BLACK | |
| J | GND | GRN/YEL | |

MOTOR CONNECTOR:
SG3102E-32-17P(027)
(270-00066)

| MOTOR WIRE | WIRE FUNCTION | WIRE COLOR | LEADS |
|------------|---------------|------------|-------|
| A | φR | RED | |
| B | φS | BLACK | |
| C | φT | BLUE | |
| D | PE GND | GRN/YEL | |



SG3102E-32-17P(027)
MATING CONNECTOR:
SG3106E-32-17S(476)

| | | |
|----------------------|------------------------------------|--------------|
| NO. PART NUMBER | DESCRIPTION | QTY. |
| UNLESS SPECIFIED | | |
| DECIMAL: .005 & .006 | MTS MTS Systems Corporation | |
| DECIMAL: .007 & .008 | Automation Division | |
| DECIMAL: .009 & .010 | | |
| ANGLES: 1/2° | | |
| FORM: MS | | |
| DATE: 1/3/02 | TITLE: "D"/SINE/460/MET/T4096/CONN | REV: |
| CHECKED: | MATERIAL: | |
| APPROVED: | DRAWING NUMBER: MPM1902DSU74Z1N | SCALE: 1/2:1 |