

MOTOR DATA @ 230 VAC (TRAP)

MOTOR PARAMETERS	UNITS	VALUE
HORSEPOWER	HP RATED	20.9
KILOWATTS	KW RATED	15.6
MAX. OPERATING SPEED	N. MAX RPM	3000
SPEED @ RATED TORQUE	N RATED RPM	2400
* CONTINUOUS RATED TORQUE @ 2400 RPM	IN-LBS[Nm]	550.0[61.8]
* CONTINUOUS STALL TORQUE	IN-LBS[Nm]	640.0[71.9]
CONTINUOUS LINE CURRENT	AMPS	71.9
PEAK TORQUE	IN-LBS[Nm]	1780.0[200.0]
PEAK CURRENT	AMPS	200.0
MAX. THEORETICAL ACCEL.	RAD/SEC ²	22,278
TORQUE SENSITIVITY	Kt IN-LBS/Amp[Nm/Amp]	8.9[1.0]
BACK EMF (LINE TO LINE)	Vrms/Krpm	79.0
D.C. RESISTANCE (P-P)	OHMS	1.11
INDUCTANCE (P-P)	MILLIHENRIES	1.65
ROTOR INERTIA W/ BRAKE	Jm IN-LBS-SEC ² [Kg-M ²]	.0799[.00900]
STATIC FRICTION	Tf IN-LBS[Nm]	9.8[1.1]

*25°C AMBIENT WITH A MAXIMUM CASE TEMPERATURE OF 100°C ON MOTOR. MOTOR MOUNTED ON A 14" X 14" X 3/4" ALUMINUM HEATSINK. THERMOSTAT IN STATOR WINDINGS WILL OPEN IF WINDING TEMPERATURE EXCEEDS 155°C. THIS ALLOWS FOR AN APPROXIMATE +10% HEADROOM IN THE CONTINUOUS TORQUE RATING BEFORE THERMOSTAT OPENS.

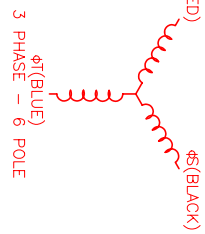
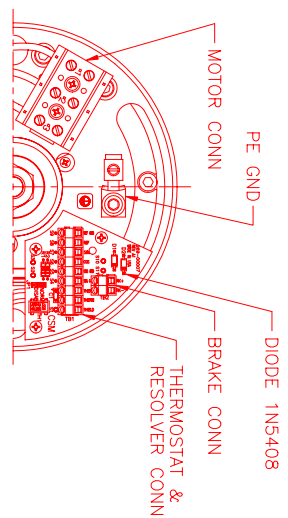
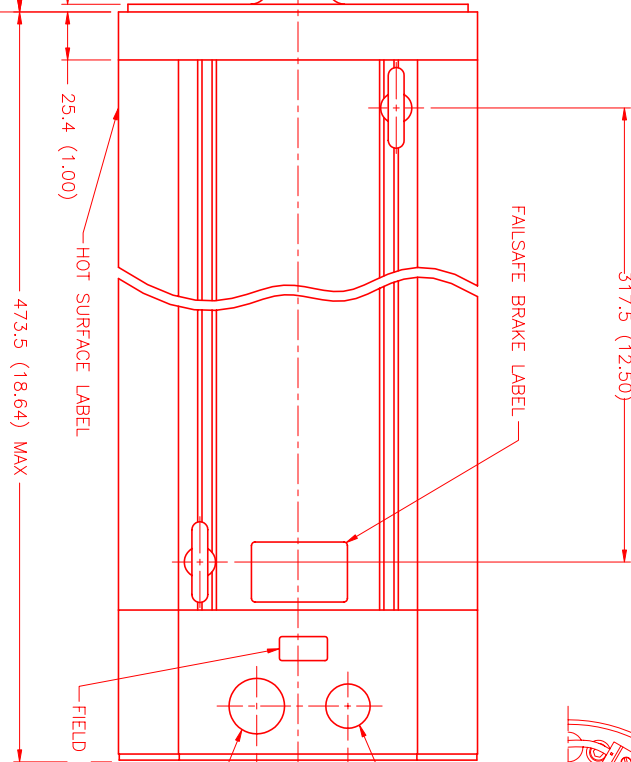
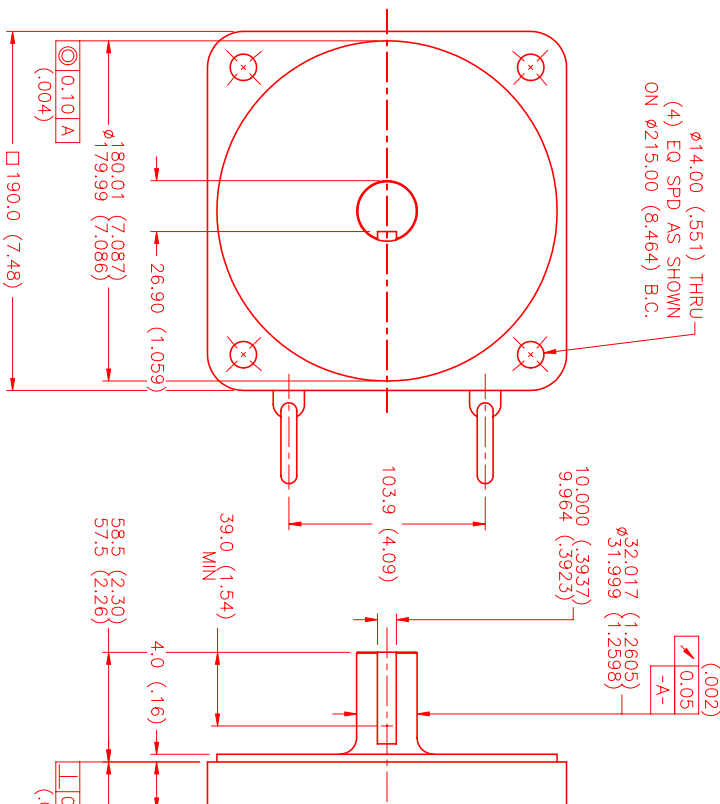
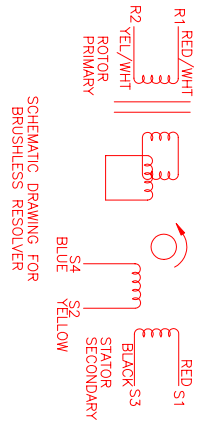
- MECHANICAL NOTES:**
- AXIAL LOAD: 100 LBS MAX
 - RADIAL LOAD: 250 LBS MAX @ 1" FROM FACE
 - MOTOR SEALED TO IP65.
 - MOTOR WEIGHT: 117 LBS. [53.1 kg]
 - MOTOR FINISH: BLACK EPOXY
 - MILLIMETERS (INCHES)

FAILSAFE BRAKE:
MIN. HOLDING TORQUE: 90 FT-LBS.
INPUT VOLTAGE: 24 VOLTS

CONNECTION CHART

MOTOR WIRE LEADS	WIRE FUNCTION	WIRE COLOR
1	φR	RED
2	φS	BLACK
3	φT	BLUE
-	PE_GND	GRN/YEL

RES/THERM/BRK WIRE LEADS	WIRE FUNCTION	WIRE COLOR
S11	BRK (+)	DIODE
S10	BRK (-)	1N5408
S9	REF_GND	YEL/WHI
S8	REF	RED/WHI
S7	SIN	YELLOW
S6	COS	RED
S5	COS_GND	BLACK
S4	SIN_GND	BLUE
S3	THERM	BLACK
S2	THERM	BLACK
S1	GND/SHLD	GRN/YEL



REV.	DESCRIPTION	DATE	APP'D.
PRELIMINARY		3/24/99	MVS
UPDATE		8/27/02	LIN

NO.	PART NUMBER	DESCRIPTION	QTY.
1	MPM1902ATG7G3R	20.9 HP 230VAC 3PH 3000 RPM	1

DRAWING NUMBER: MPM1902ATG7G3R
 SCALE: 1/2:1
 DATE: 3/24/99
 DRAWN: MVS
 CHECKED: MVS
 APPROVED: MVS

MTS
Automation Division