

### MOTOR DATA @ 230 VAC (TRAP)

MOTOR PARAMETERS	UNITS	VALUE
HORSEPOWER	HP	10.2
KILOWATTS	KW	7.6
MAX. OPERATING SPEED	N MAX	2400
SPEED @ RATED TORQUE	N RATED	2100
* CONTINUOUS RATED TORQUE @ 2100 RPM	IN-LBS [Nm]	306.0 [34.6]
* CONTINUOUS STALL TORQUE	IN-LBS [Nm]	360.0 [40.7]
CONTINUOUS LINE CURRENT	AMPS	34.0
PEAK TORQUE	IN-LBS [Nm]	1081.0 [122.2]
PEAK CURRENT	AMPS	102.0
MAX. THEORETICAL ACCEL.	RAD/SEC <sup>2</sup>	30,710
TORQUE SENSITIVITY	Kt [IN-LBS/AMP] [Nm/AMP]	10.6 [1.2]
BACK EMF (LINE TO LINE)	Vrms/Krpm	93.0
D.C. RESISTANCE (P-P)	OHMS	1.18
INDUCTANCE (P-P)	MILLIHENRIES	1.7
ROTOR INERTIA	Jm [IN-LBS-SEC <sup>2</sup> ] [Kg-M <sup>2</sup> ]	.0352 [0.0397]
STATIC FRICTION	Tf [IN-LBS] [Nm]	4.2 [.47]

\*25C AMBIENT WITH A MAXIMUM CASE TEMPERATURE OF 100°C ON MOTOR. MOTOR MOUNTED ON A 12" X 12" X 1/2" ALUMINUM HEATSINK. THERMOSTAT IN STATOR WINDINGS WILL OPEN IF WINDING TEMPERATURE EXCEEDS 155°C. THIS ALLOWS FOR AN APPROXIMATE +10% HEADROOM IN THE CONTINUOUS TORQUE RATING BEFORE THERMOSTAT OPENS.

#### MECHANICAL NOTES:

- AXIAL LOAD: 50 LBS MAX
- RADIAL LOAD: 150 LBS MAX @ 1" FROM FACE
- MOTOR SEALED TO IP65.
- MOTOR WEIGHT: 81 LBS. [36.7 Kg]
- MOTOR FINISH: BLACK EPOXY
- MOTOR OUTPUT SHAFT: STAINLESS STEEL
- MILLIMETERS (INCHES)

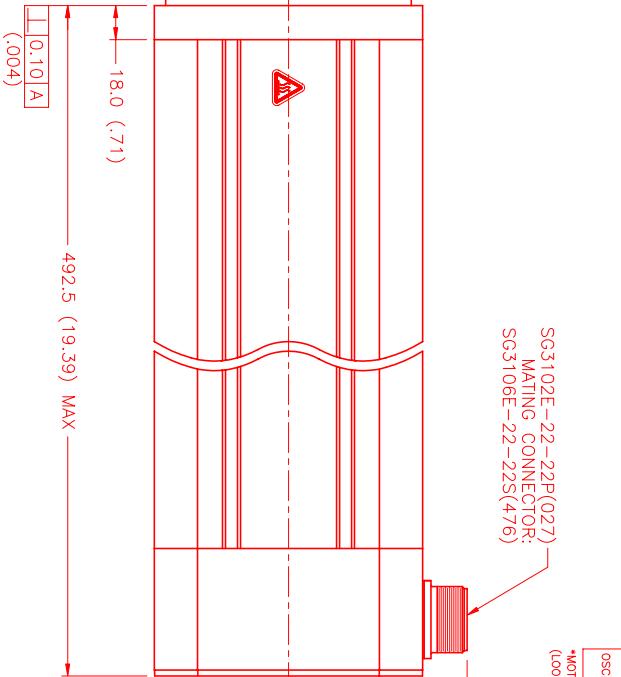
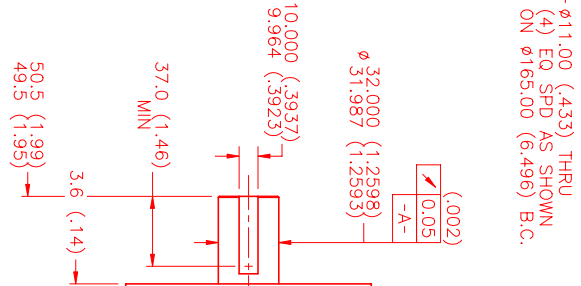
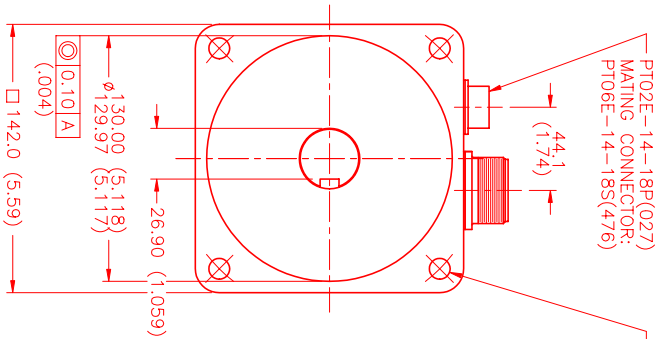
#### ENCODER: (290-00052) OH48-2000P6-L6-SV

#### CONNECTION CHART MOTOR CONNECTOR: SG3102E-22-22P(027) (270-00017)

PIN	WIRE FUNCTION	WIRE COLOR
A	ΦR	RED
B	ΦS	BLACK
C	ΦT	BLUE
D	PE GND	GRN/YEL

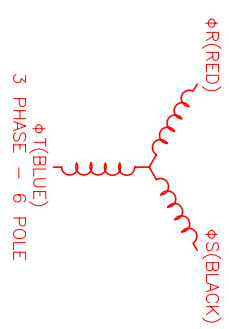
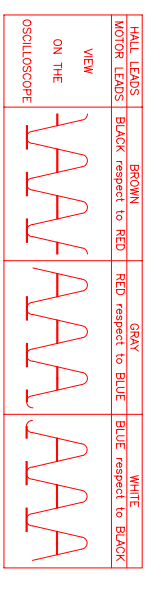
#### ENCODER/THERM CONNECTOR: PT02E-14-18P(027) (270-00024)

PIN	WIRE FUNCTION	WIRE COLOR
T	GROUND	BLACK
K	+5VDC	RED
B	CH A	BLUE
C	CH A	BLUE/BLK
N	CH B	GREEN
P	CH B	GRN/BLK
M	CH Z	YELLOW
U	CH Z	YEL/BLK
E	CH U	BROWN
R	CH U	BRN/BLK
F	CH V	GRAY
S	CH V	GRAY/BLK
G	CH W	WHITE
H	CH W	WHT/BLK
D	GND/CABLE	SHLD
A	THERM	BLACK
L	THERM	BLACK
J	GND	GRN/YEL



#### SG3102E-22-22P(027) MATING CONNECTOR: SG3106E-22-22S(476)

#### \*MOTOR ROTATION C/W (COUNTER CLOCKWISE) (LOOKING AT THE FACE OF THE MOTOR)



NO.	PART NUMBER	DESCRIPTION	QTY.
1	MPM1424ATG7JN11N	MOTOR	1

REV.	DESCRIPTION	DATE	APP.
PRELIMINARY		4/12/99	MVS

NO.	PART NUMBER	DESCRIPTION	QTY.
1	MPM1424ATG7JN11N	MOTOR	1

**MTS**  
Automation Division

DATE: 4/12/99  
DRAWN: MVS  
CHECKED:  
APPROVED:  
SCALE: 1/2=1