

### MOTOR DATA @ 460 VAC (TRAP)

MOTOR PARAMETERS	UNITS	VALUE
HORSEPOWER	HP RATED	6.0
KILOWATTS	KW RATED	4.5
MAX. OPERATING SPEED	N MAX	1750
SPEED @ RATED TORQUE	N RATED	1500
* CONTINUOUS RATED TORQUE @ 1500 RPM	IN-LBS [Nm]	252.0 [28.2]
* CONTINUOUS STALL TORQUE	IN-LBS [Nm]	280.0 [31.5]
CONTINUOUS LINE CURRENT	AMPS	10.6
PEAK TORQUE	IN-LBS [Nm]	840.0 [94.4]
PEAK CURRENT	AMPS	31.6
MAX. THEORETICAL ACCEL.	RAD/SEC <sup>2</sup>	28,378
TORQUE SENSITIVITY	Kt [IN-LBS/AMP [Nm/AMP]	25.8 [2.9]
BACK EMF (LINE TO LINE)	Vrms/Krpm	230.0
D.C. RESISTANCE (P-P)	OHMS	1.7
INDUCTANCE (P-P)	MILLIHENRIES	16.9
ROTOR INERTIA W./BRAKE	Jm [IN-LBS-SEC <sup>2</sup> [Kg-M <sup>2</sup> ]	.0843 [0.0095]
STATIC FRICTION	Tf [IN-LBS] [Nm]	3.6 [0.41]

\*25°C AMBIENT WITH A MAXIMUM CASE TEMPERATURE OF 100°C ON MOTOR. MOTOR MOUNTED ON A 12" X 12" X 1/2" ALUMINUM HEATSINK. THERMOSTAT IN STATOR WINDINGS WILL OPEN IF WINDING TEMPERATURE EXCEEDS 155°C. THIS ALLOWS FOR AN APPROXIMATE +10% HEADROOM IN THE CONTINUOUS TORQUE RATING BEFORE THERMOSTAT OPENS.

#### MECHANICAL NOTES:

- AXIAL LOAD: 50 LBS MAX
- RADIAL LOAD: 150 LBS MAX @ 1" FROM FACE
- MOTOR SEALED TO IP65.
- MOTOR WEIGHT: 73 LBS. [ 33.1 kg]
- MOTOR FINISH: BLACK EPOXY
- MOTOR OUTPUT SHAFT: STAINLESS STEEL
- MILLIMETERS (INCHES)

**PERMANENT MAGNET BRAKE:**  
MIN HOLDING TORQUE: 40 Nm  
INPUT VOLTAGE: 24 VDC

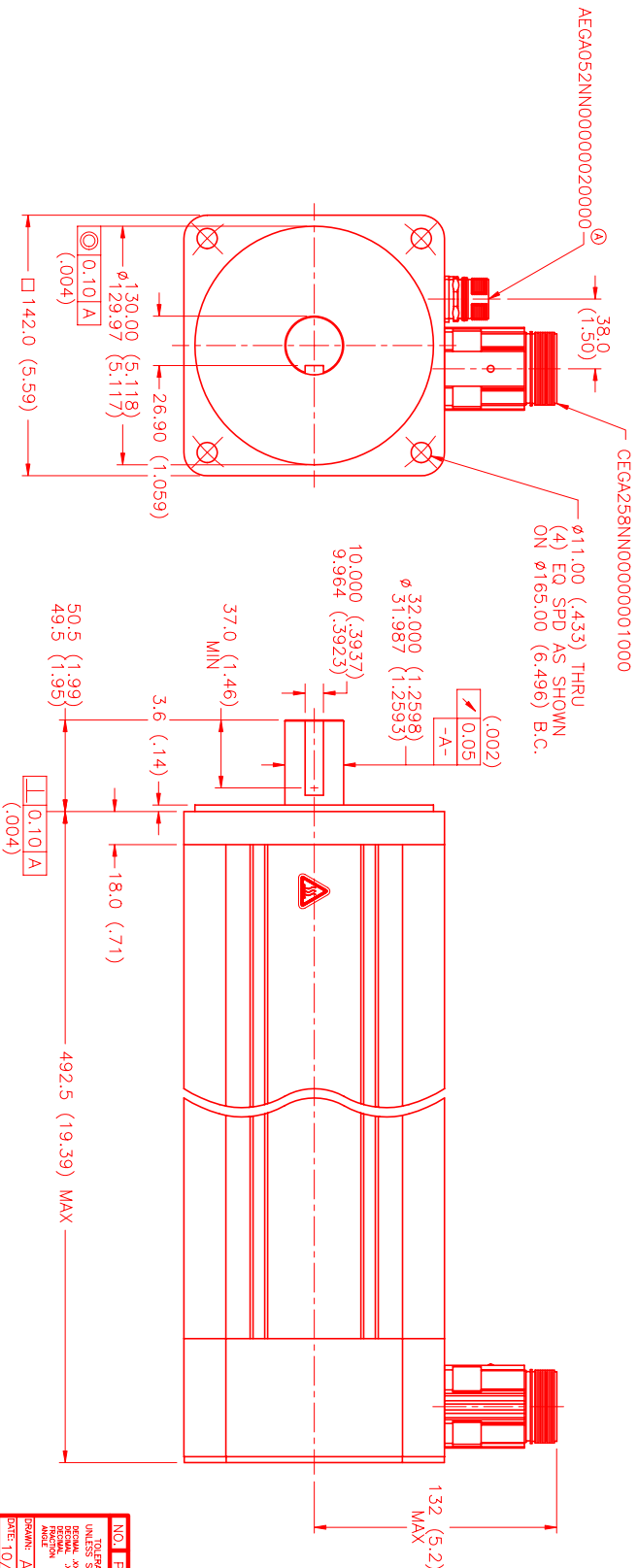
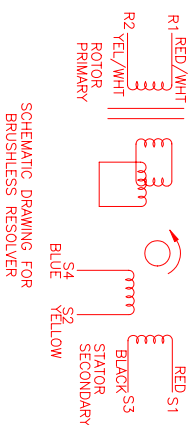
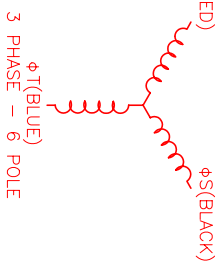
#### CONNECTION CHART

RESOLVER CONNECTOR:  
@AEGA052NN000000200000  
(270-00257)

MOTOR/BRAKE/THERM CONNECTOR:  
CEGA258NN0000001000  
(270-00325)

PIN	WIRE FUNCTION	WIRE COLOR
1	REF (R1)	RED/WHT
2	REF GND (R2)	YEL/WHT
4	COS GND (S1)	BLACK
5	COS (S3)	RED
6	SIN (S2)	YELLOW
7	SIN GND (S4)	BLUE
8	-	-
9	-	-
10	-	-
11	-	-
12	-	-

PIN	WIRE FUNCTION	WIRE COLOR
U	ΦR (U1)	RED
PE	PE GND	GRN/YEL
W	ΦS (W1)	BLACK
V	Φ T (V1)	BLUE
+	BRK (+)	DIODE
-	BRK (-)	1N4007
1	THERM	BLACK
2	THERM	BLACK



REV.	DESCRIPTION	DATE	APP'D.
A	PRELIMINARY	11/16/00	AJS
A	E.C.O. - 620	4/11/01	AJS

#### REVISIONS

REV.	DESCRIPTION	DATE	APP'D.
A	PRELIMINARY	11/16/00	AJS
A	E.C.O. - 620	4/11/01	AJS

NO.	PART NUMBER	DESCRIPTION	QTY.
1	AJS	TRAP/460/MET/RES/INTER/BINDER	A

MTS Systems Corporation  
Automation Division

NO.	PART NUMBER	DESCRIPTION	QTY.
1	AJS	TRAP/460/MET/RES/INTER/BINDER	A