

### MOTOR DATA @ 460 VAC (TRAP)

MOTOR PARAMETERS	UNITS	VALUE
HORSEPOWER	HP RATED	4.5
KILOWATTS	KW RATED	3.4
MAX. OPERATING SPEED	N. MAX RPM	1750
SPEED @ RATED TORQUE	N RATED RPM	1500
* CONTINUOUS RATED TORQUE @ 1500 RPM	IN-LBS[Nm]	190.0[21.3]
* CONTINUOUS STALL TORQUE	IN-LBS[Nm]	210.0[23.7]
CONTINUOUS LINE CURRENT	AMPS	7.9
PEAK TORQUE	IN-LBS[Nm]	630.0[70.8]
PEAK CURRENT	AMPS	23.7
MAX. THEORETICAL ACCEL.	RAD/SEC <sup>2</sup>	29,858
TORQUE SENSITIVITY	Kt [IN-LBS/AMP][Nm/AMP]	26.6[3.0]
BACK EMF (LINE TO LINE)	Vrms/Krpm	230.0
D.C. RESISTANCE (P-P)	OHMS	2.5
INDUCTANCE (P-P)	MILLIHENRIES	23.0
ROTOR INERTIA W/ BRAKE	Jm [IN-LBS-SEC <sup>2</sup> ][Kg-M <sup>2</sup> ]	.0211[.00238]
STATIC FRICTION	Tf [IN-LBS][Nm]	3.0[.34]

\*25°C AMBIENT WITH A MAXIMUM CASE TEMPERATURE OF 100°C ON MOTOR. MOTOR MOUNTED ON A 12" X 12" X 1/2" ALUMINUM HEAT-SINK. THERMOSTAT IN STATOR WINDINGS WILL OPEN IF WINDING TEMPERATURE EXCEEDS 155°C. THIS ALLOWS FOR AN APPROXIMATE +10% HEADROOM IN THE CONTINUOUS TORQUE RATING BEFORE THERMOSTAT OPENS.

#### MECHANICAL NOTES:

- AXIAL LOAD: 50 LBS MAX
- RADIAL LOAD: 150 LBS MAX @ 1" FROM FACE
- MOTOR SEALED TO IP65.
- MOTOR WEIGHT: 60 LBS. [ 27.2 kg]
- MOTOR FINISH: BLACK EPOXY
- MOTOR OUTPUT SHAFT: STAINLESS STEEL
- MILLIMETERS (INCHES)

#### FAIL SAFE BRAKE:

MIN HOLDING TORQUE: 360 IN-LBS  
INPUT VOLTAGE: 24 VOLTS

#### CONNECTION CHART

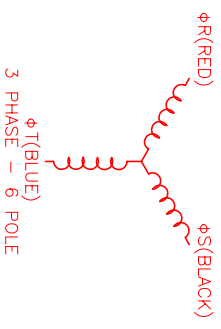
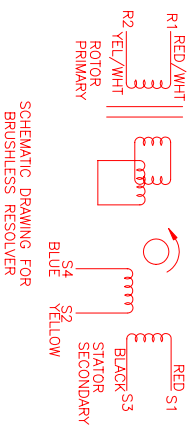
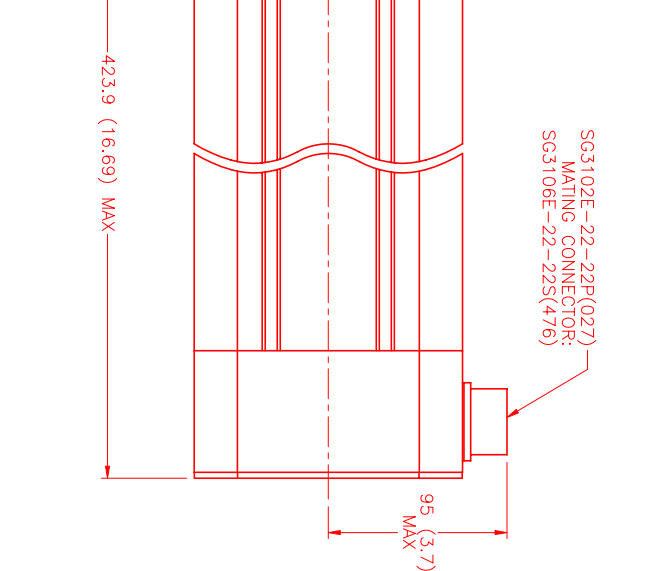
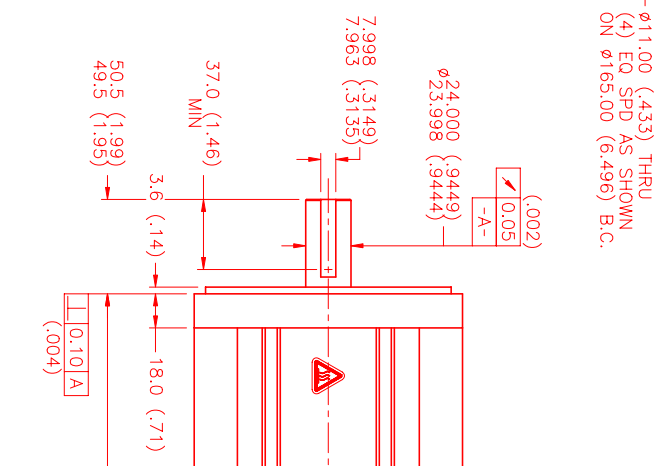
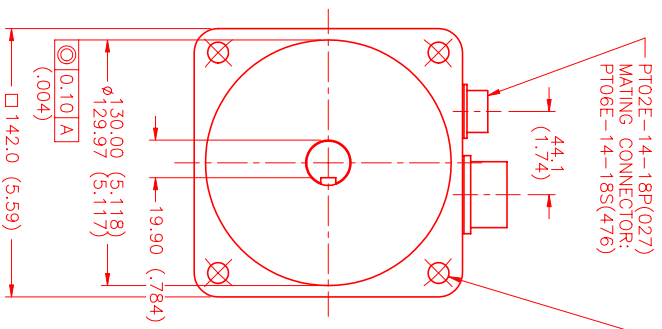
MOTOR CONNECTOR:  
SG3102E-22-22P(027)  
(270-00017)

MOTOR WIRE LEADS	WIRE FUNCTION	WIRE COLOR
A	ΦR	RED
B	ΦS	BLACK
C	ΦT	BLUE
D	PE GND	GRN/YEL

#### RESOLVER/THERM CONNECTOR:

RESOLVER/THERM CONNECTOR:  
PT02E-14-18P(027)  
(270-00024)

RES/THERM/BRK WIRE LEADS	WIRE FUNCTION	WIRE COLOR
U	THERM	BLACK
N	THERM	BLACK
H	SIN	YELLOW
G	COS GND	BLACK
S	COS	RED
F	SIN GND	BLUE
R	REF GND	YEL/WHT
E	REF	RED/WHT
D	RES SHLD	GRN/YEL
P	GND	GRN/YEL
A	BRK (+)	DIODE
B	BRK (-)	1N4007
C	BRK SHLD	-
J	-	-
K	-	-
L	-	-
M	-	-
T	-	-



NO.	PART NUMBER	DESCRIPTION	QTY.
1	MTS	MTS Systems Corporation Automation Division	
2	MTS	MTS Systems Corporation Automation Division	
3	MTS	MTS Systems Corporation Automation Division	
4	MTS	MTS Systems Corporation Automation Division	
5	MTS	MTS Systems Corporation Automation Division	
6	MTS	MTS Systems Corporation Automation Division	
7	MTS	MTS Systems Corporation Automation Division	
8	MTS	MTS Systems Corporation Automation Division	
9	MTS	MTS Systems Corporation Automation Division	
10	MTS	MTS Systems Corporation Automation Division	
11	MTS	MTS Systems Corporation Automation Division	
12	MTS	MTS Systems Corporation Automation Division	
13	MTS	MTS Systems Corporation Automation Division	
14	MTS	MTS Systems Corporation Automation Division	
15	MTS	MTS Systems Corporation Automation Division	
16	MTS	MTS Systems Corporation Automation Division	
17	MTS	MTS Systems Corporation Automation Division	
18	MTS	MTS Systems Corporation Automation Division	
19	MTS	MTS Systems Corporation Automation Division	
20	MTS	MTS Systems Corporation Automation Division	
21	MTS	MTS Systems Corporation Automation Division	
22	MTS	MTS Systems Corporation Automation Division	
23	MTS	MTS Systems Corporation Automation Division	
24	MTS	MTS Systems Corporation Automation Division	
25	MTS	MTS Systems Corporation Automation Division	
26	MTS	MTS Systems Corporation Automation Division	
27	MTS	MTS Systems Corporation Automation Division	
28	MTS	MTS Systems Corporation Automation Division	
29	MTS	MTS Systems Corporation Automation Division	
30	MTS	MTS Systems Corporation Automation Division	
31	MTS	MTS Systems Corporation Automation Division	
32	MTS	MTS Systems Corporation Automation Division	
33	MTS	MTS Systems Corporation Automation Division	
34	MTS	MTS Systems Corporation Automation Division	
35	MTS	MTS Systems Corporation Automation Division	
36	MTS	MTS Systems Corporation Automation Division	
37	MTS	MTS Systems Corporation Automation Division	
38	MTS	MTS Systems Corporation Automation Division	
39	MTS	MTS Systems Corporation Automation Division	
40	MTS	MTS Systems Corporation Automation Division	
41	MTS	MTS Systems Corporation Automation Division	
42	MTS	MTS Systems Corporation Automation Division	
43	MTS	MTS Systems Corporation Automation Division	
44	MTS	MTS Systems Corporation Automation Division	
45	MTS	MTS Systems Corporation Automation Division	
46	MTS	MTS Systems Corporation Automation Division	
47	MTS	MTS Systems Corporation Automation Division	
48	MTS	MTS Systems Corporation Automation Division	
49	MTS	MTS Systems Corporation Automation Division	
50	MTS	MTS Systems Corporation Automation Division	
51	MTS	MTS Systems Corporation Automation Division	
52	MTS	MTS Systems Corporation Automation Division	
53	MTS	MTS Systems Corporation Automation Division	
54	MTS	MTS Systems Corporation Automation Division	
55	MTS	MTS Systems Corporation Automation Division	
56	MTS	MTS Systems Corporation Automation Division	
57	MTS	MTS Systems Corporation Automation Division	
58	MTS	MTS Systems Corporation Automation Division	
59	MTS	MTS Systems Corporation Automation Division	
60	MTS	MTS Systems Corporation Automation Division	
61	MTS	MTS Systems Corporation Automation Division	
62	MTS	MTS Systems Corporation Automation Division	
63	MTS	MTS Systems Corporation Automation Division	
64	MTS	MTS Systems Corporation Automation Division	
65	MTS	MTS Systems Corporation Automation Division	
66	MTS	MTS Systems Corporation Automation Division	
67	MTS	MTS Systems Corporation Automation Division	
68	MTS	MTS Systems Corporation Automation Division	
69	MTS	MTS Systems Corporation Automation Division	
70	MTS	MTS Systems Corporation Automation Division	
71	MTS	MTS Systems Corporation Automation Division	
72	MTS	MTS Systems Corporation Automation Division	
73	MTS	MTS Systems Corporation Automation Division	
74	MTS	MTS Systems Corporation Automation Division	
75	MTS	MTS Systems Corporation Automation Division	
76	MTS	MTS Systems Corporation Automation Division	
77	MTS	MTS Systems Corporation Automation Division	
78	MTS	MTS Systems Corporation Automation Division	
79	MTS	MTS Systems Corporation Automation Division	
80	MTS	MTS Systems Corporation Automation Division	
81	MTS	MTS Systems Corporation Automation Division	
82	MTS	MTS Systems Corporation Automation Division	
83	MTS	MTS Systems Corporation Automation Division	
84	MTS	MTS Systems Corporation Automation Division	
85	MTS	MTS Systems Corporation Automation Division	
86	MTS	MTS Systems Corporation Automation Division	
87	MTS	MTS Systems Corporation Automation Division	
88	MTS	MTS Systems Corporation Automation Division	
89	MTS	MTS Systems Corporation Automation Division	
90	MTS	MTS Systems Corporation Automation Division	
91	MTS	MTS Systems Corporation Automation Division	
92	MTS	MTS Systems Corporation Automation Division	
93	MTS	MTS Systems Corporation Automation Division	
94	MTS	MTS Systems Corporation Automation Division	
95	MTS	MTS Systems Corporation Automation Division	
96	MTS	MTS Systems Corporation Automation Division	
97	MTS	MTS Systems Corporation Automation Division	
98	MTS	MTS Systems Corporation Automation Division	
99	MTS	MTS Systems Corporation Automation Division	
100	MTS	MTS Systems Corporation Automation Division	