

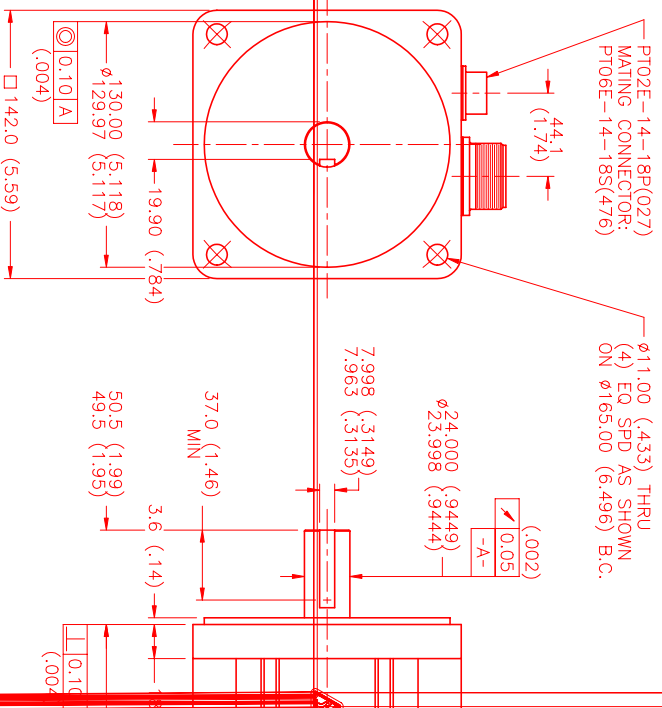
MOTOR DATA @ 380 VAC (TRAP)

MOTOR PARAMETERS	UNITS	VALUE
MOTOR HORSEPOWER	HP RATED	3.8
	KW RATED	2.9
MAX. OPERATING SPEED	N MAX	1450
SPEED @ RATED TORQUE	N RATED	1240
* CONTINUOUS RATED TORQUE @ 1240 RPM	IN-LBS [Nm]	193.0 [21.8]
* CONTINUOUS STALL TORQUE	IN-LBS [Nm]	210.0 [23.7]
CONTINUOUS LINE CURRENT	AMPS	7.9
PEAK TORQUE	IN-LBS [Nm]	630.0 [71.2]
PEAK CURRENT	AMPS	23.7
MAX. THEORETICAL ACCEL.	RAD/SEC ²	33.511
TORQUE SENSITIVITY	Kt [N-LBS/AMP] [Nm/AMP]	25.8 [2.9]
BACK EMF (LINE TO LINE)	Vrms/Krpm	230.0
D.C. RESISTANCE (P-P)	OHMS	2.5
INDUCTANCE (P-P)	MILLIHENRIES	23.0
ROTOR INERTIA	Jm [N-LBS-SEC ²] [Kg-M ²]	.0188 [0.0212]
STATIC FRICTION	Tf [N-LBS] [Nm]	3.0 [.34]

*25°C AMBIENT WITH A MAXIMUM CASE TEMPERATURE OF 100°C ON MOTOR. MOTOR MOUNTED ON A 12" X 12" X 1/2" ALUMINUM HEATSINK. THERMOSTAT IN STATOR WINDINGS WILL OPEN IF WINDING TEMPERATURE EXCEEDS 155°C. THIS ALLOWS FOR AN APPROXIMATE +10% HEADROOM IN THE CONTINUOUS TORQUE RATING BEFORE THERMOSTAT OPENS.

MECHANICAL NOTES:

- AXIAL LOAD: 50 LBS MAX
- RADIAL LOAD: 150 LBS MAX @ 1" FROM FACE
- MOTOR SEALED TO IP65.
- MOTOR WEIGHT: 48.8 LBS. [22.1 kg]
- MOTOR FINISH: BLACK EPOXY
- MOTOR OUTPUT SHAFT: STAINLESS STEEL
- MILLIMETERS (INCHES)



CONNECTION CHART

MOTOR CONNECTOR:
SG3102E-22-22P(027)
(270-00017)

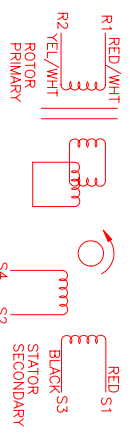
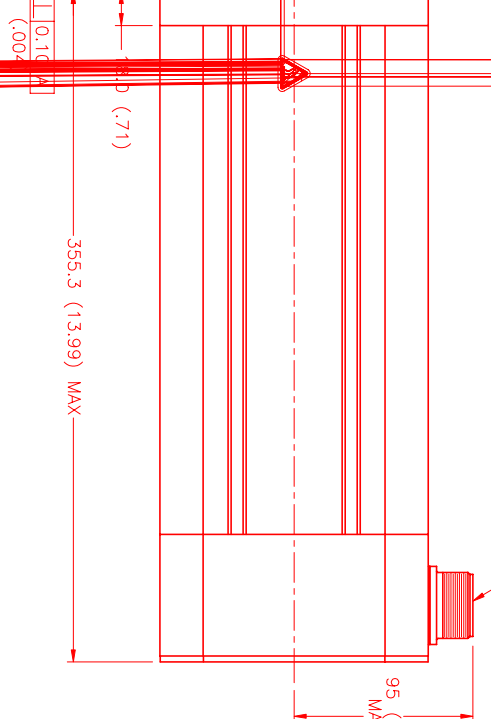
PIN	WIRE FUNCTION	WIRE COLOR
A	ΦR	RED
B	ΦS	BLACK
C	ΦT	BLUE
D	PE GND	GRN/YEL

RESOLVER/THERM CONNECTOR:

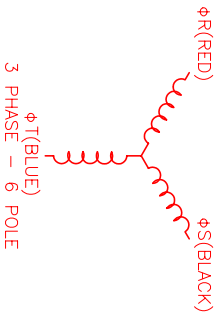
PT02E-14-18P(027)
(270-00024)

PIN	WIRE FUNCTION	WIRE COLOR
U	THERM	BLACK
N	THERM	BLACK
H	SIN	YELLOW
G	COS GND	BLACK
S	COS	RED
F	SIN GND	BLUE
R	REF GND	YEL/WHI
E	REF	RED/WHI
D	RES. SHLD	GRN/YEL
P	GND	GRN/YEL
A	-	-
B	-	-
C	-	-
J	-	-
K	-	-
L	-	-
M	-	-
T	-	-

SG3102E-22-22P(027)
MATING CONNECTOR:
SG3106E-22-22S(476)



SCHEMATIC DRAWING FOR BRUSHLESS RESOLVER



3 PHASE - 6 POLE

NO.	PART NUMBER	DESCRIPTION	QTY.
UNLESS SPECIFIED			
REVISIONS			
DATE			
APPROVED			
DESIGNED BY			
CHECKED			
DRAWN			
MATERIAL			
SCALE			

MTS
Automation Division

DATE: 7/11/00
DRAWN: AIS
CHECKED: [Signature]
APPROVED: [Signature]
MATERIAL: [Blank]
SCALE: 1/2:1