

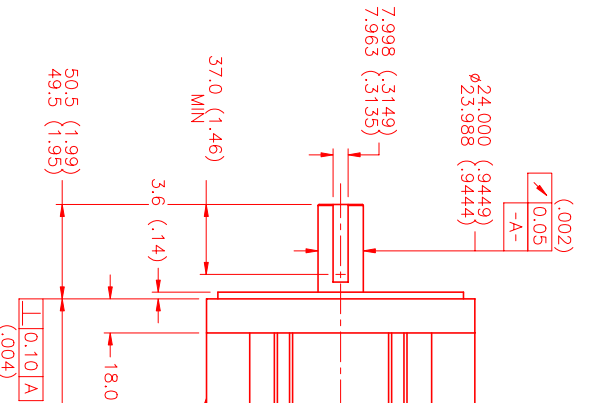
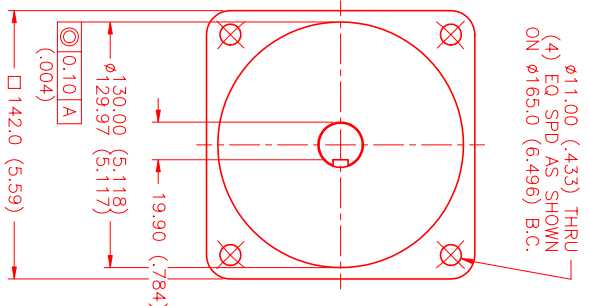
MOTOR DATA @ 230 VAC (TRAP)

MOTOR PARAMETERS	UNITS	VALUE
HORSEPOWER	HP	4.5
KILOWATTS	KW RATED	3.4
MAX. OPERATING SPEED	N. MAX RPM	1750
SPEED @ RATED TORQUE	RATED RPM	1500
* CONTINUOUS RATED TORQUE @ 1500 RPM	IN-LBS[Nm]	190.0[21.3]
* CONTINUOUS STALL TORQUE	IN-LBS[Nm]	210.0[23.7]
CONTINUOUS LINE CURRENT	AMPS	15.8
PEAK TORQUE	IN-LBS[Nm]	630.0[70.8]
PEAK CURRENT	AMPS	47.4
MAX. THEORETICAL ACCEL.	RAD/SEC ²	29,858
TORQUE SENSITIVITY	Kt IN-LBS/AMP[Nm/AMP]	13.3[1.5]
BACK EMF (LINE TO LINE)	Vrms/Krpm	115.0
D.C. RESISTANCE (P-P)	OHMS	0.72
INDUCTANCE (P-P)	MILLIHENRIES	6.1
ROTOR INERTIA W/BRAKE	Jm [IN-LBS-SEC ²][Kg-M ²]	.0211[.00238]
STATIC FRICTION	Tf [IN-LBS][Nm]	3.0[0.34]

*25°C AMBIENT WITH A MAXIMUM CASE TEMPERATURE OF 100°C ON MOTOR. MOTOR MOUNTED ON A 12" X 12" X 1/2" ALUMINUM HEATSINK. THERMOSTAT IN STATOR WINDINGS WILL OPEN IF WINDING TEMPERATURE EXCEEDS 155°C. THIS ALLOWS FOR AN APPROXIMATE +10% HEADROOM IN THE CONTINUOUS TORQUE RATING BEFORE THERMOSTAT OPENS.

MECHANICAL NOTES:

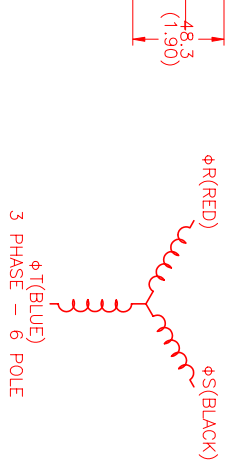
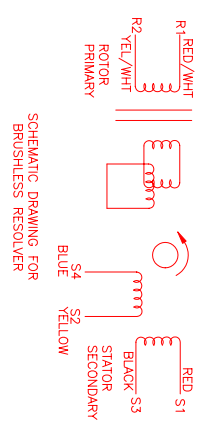
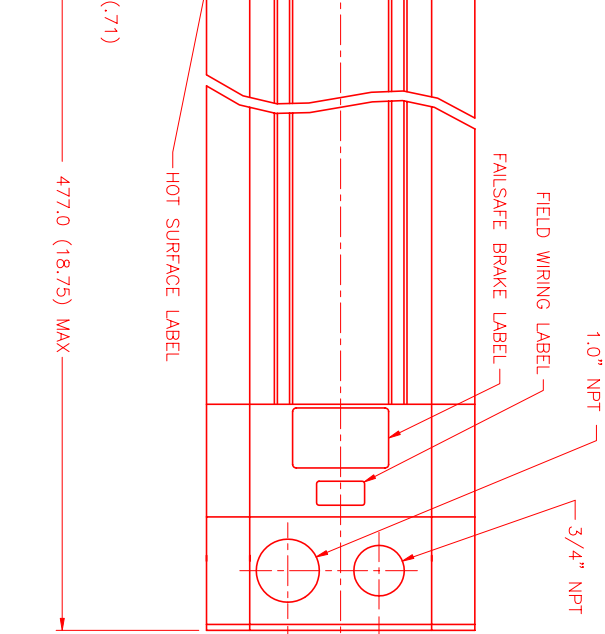
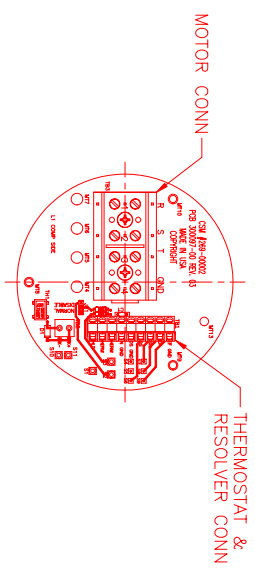
- AXIAL LOAD: 50 LBS MAX
- RADIAL LOAD: 150 LBS MAX @ 1" FROM FACE
- MOTOR SEALED TO IP65.
- MOTOR WEIGHT: 63 LBS. [27.6 Kg]
- MOTOR FINISH: BLACK EPOXY
- MOTOR OUTPUT SHAFT: STAINLESS STEEL
- MILLIMETERS (INCHES)



CONNECTION CHART

TERMINAL	WIRE FUNCTION	WIRE COLOR
1	ϕ R	RED
2	ϕ S	BLACK
3	ϕ T	BLUE
4	PE GND	GRN/YEL

RES/THERM/BRAKE	WIRE FUNCTION	WIRE COLOR
S11	BRAKE (+)	DIODE
S10	BRAKE (-)	IN4007
S9	REF. GND	YEL/WHITE
S8	REF	RED/WHITE
S7	SIN	YELLOW
S6	COS	RED
S5	COS GND	BLACK
S4	SIN GND	BLUE
S3	THERM	BLACK
S2	THERM	BLACK
S1	GND/SHIELD	GREEN



REV.	DESCRIPTION	DATE	APP'D.
PRELIMINARY		8/4/99	MVS

NO.	PART NUMBER	DESCRIPTION	QTY.
1	MPM1422BTG7G3R	Brushless Resolver	1

MTS Systems Corporation
 Automation Division
 DATE: 8/4/99
 DRAWING NUMBER: MPM1422BTG7G3R
 SCALE: 1/2:1