

MOTOR DATA @ 230 VAC (SINE)

MOTOR PARAMETERS	UNITS	VALUE
HORSEPOWER	HP	6.8
KILOWATTS	KW	5.1
MAX. OPERATING SPEED	N MAX RPM	2700
SPEED @ RATED TORQUE	N RATED RPM	2400
* CONTINUOUS RATED TORQUE @ 2400 RPM	IN-LBS[Nm]	179.0[20.2]
* CONTINUOUS STALL TORQUE	IN-LBS[Nm]	210.0[23.7]
CONTINUOUS LINE CURRENT	AMPS[RMS/φ]	18.7
PEAK TORQUE	IN-LBS[Nm]	630.0[70.8]
PEAK CURRENT	AMPS[RMS/φ]	56.3
MAX. THEORETICAL ACCEL.	RAD/SEC ²	33,511
TORQUE SENSITIVITY	Kt [N-LBS/AMP/RMS/φ] [Nm/AMP/RMS/φ]	11.2[1.26]
BACK EMF (LINE TO LINE)	Vrms/Krpm	70.0
D.C. RESISTANCE (P-P)	OHMS	0.24
INDUCTANCE (P-P)	MILLIHENRIES	2.0
ROTOR INERTIA	Jm [IN-LBS-SEC ²] [Kg-M ²]	.0188[.00212]
STATIC FRICTION	Tf [IN-LBS] [Nm]	3.0[0.34]

CONNECTION CHART

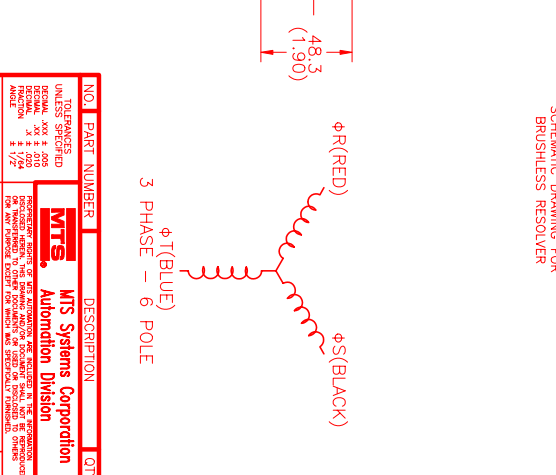
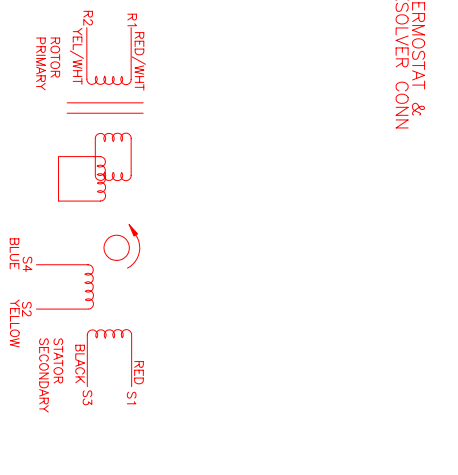
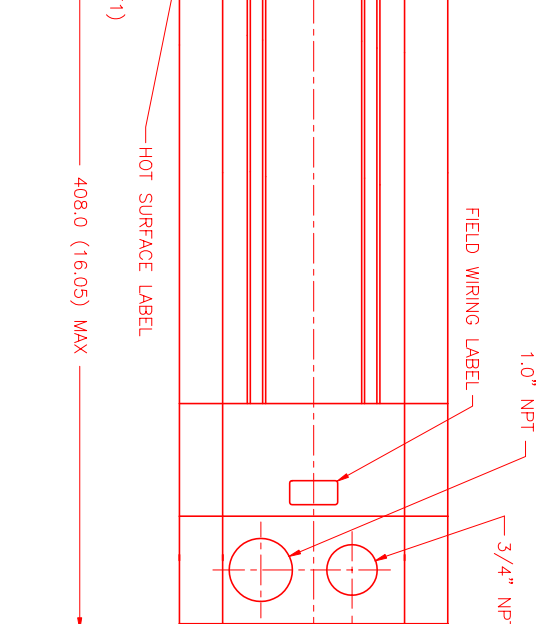
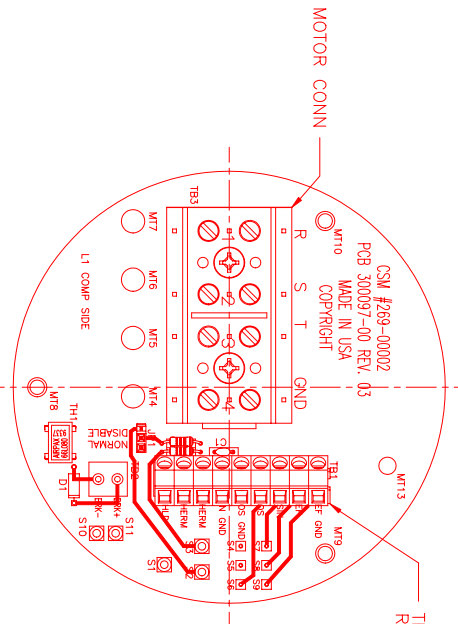
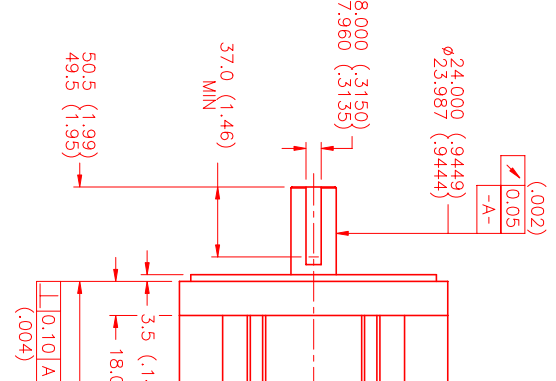
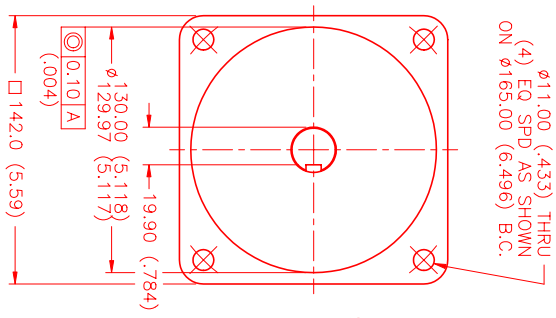
MOTOR WIRE LEADS	WIRE FUNCTION	WIRE COLOR
1	ΦS	RED
2	ΦS	BLACK
3	ΦT	BLUE
4	PE GND	GRN/YEL

RES/THERM WIRE LEADS	WIRE FUNCTION	WIRE COLOR
S9	REF GND	YEL/WHI
S8	REF	RED/WHI
S7	SIN	YELLOW
S6	COS	RED
S5	COS GND	BLACK
S4	SIN GND	BLUE
S3	THERM	BLACK
S2	THERM	BLACK
S1	RES SHLD	GRN/YEL

*25°C AMBIENT WITH A MAXIMUM CASE TEMPERATURE OF 100°C ON MOTOR. MOTOR MOUNTED ON A 12" X 12" X 1/2" ALUMINUM HEATSINK. THERMOSTAT IN STATOR WINDINGS WILL OPEN IF WINDING TEMPERATURE EXCEEDS 155°C. THIS ALLOWS FOR AN APPROXIMATE +10% HEADROOM IN THE CONTINUOUS TORQUE RATING BEFORE THERMOSTAT OPENS.

MECHANICAL NOTES:

- AXIAL LOAD: 50 LBS MAX
- RADIAL LOAD: 150 LBS MAX @ 1" FROM FACE
- MOTOR SEALED TO IP65.
- MOTOR WEIGHT: 51 LBS. [23 Kg]
- MOTOR FINISH: BLACK EPOXY
- MOTOR OUTPUT SHAFT: STAINLESS STEEL
- MILLIMETERS (INCHES)



REV.	DESCRIPTION	DATE	APPD.
PRELIMINARY		3/12/02	AJS

NO.	PART NUMBER	DESCRIPTION	QTY.
1	MPM1422ASG7G3N	230VAC SINE MOTOR	1

MTS MTS Systems Corporation
 Automation Division
 10000 MTS Way, Suite 200
 Dallas, TX 75243
 Phone: 972.980.9300
 Fax: 972.980.9301
 Email: sales@mts.com
 Website: www.mts.com

DATE: 3/12/02
 DRAWN: AJS
 CHECKED: AJS
 APPROVED: AJS

TITLE: "A" SINE/230VAC/RES/NPT
 MATERIAL: ALUMINUM
 QUANTITY: 1/2-1