

MOTOR DATA @ 460 VAC (TRAP)

MOTOR PARAMETERS	UNITS	VALUE
HORSEPOWER	HP RATED	2.4
	KW RATED	1.8
MAX. OPERATING SPEED	N MAX	2100
SPEED @ RATED TORQUE	N RATED	1500
* CONTINUOUS RATED TORQUE	IN-LBS [Nm]	104.0 [11.7]
* CONTINUOUS STALL TORQUE	IN-LBS [Nm]	116.2 [13.1]
CONTINUOUS LINE CURRENT	AMPS	4.7
PEAK TORQUE	IN-LBS [Nm]	406.7 [45.7]
PEAK CURRENT	AMPS	16.4
MAX. THEORETICAL ACCEL	RD/SEC ²	41,081
TORQUE SENSITIVITY	Kt IN-LBS/AMF [Nm/AMp]	24.8 [2.84]
BACK EMF (LINE TO LINE)	Vrms/Krpm	220.0
D.C. RESISTANCE (P-P)	OHMS	3.9
INDUCTANCE (P-P)	MILLIHENRIES	29.6
ROTOR INERTIA W/BRAKE	Jm IN-LBS-SEC ² [Kg-M ²]	.00991 [0.012]
STATIC FRICTION	Tf IN-LBS [Nm]	1.8 [2]

*25°C AMBIENT WITH A MAXIMUM CASE TEMPERATURE OF 100°C ON MOTOR. MOTOR MOUNTED ON A 12" X 12" X 1/2" ALUMINUM HEATSINK. THERMOSTAT IN STATOR WINDINGS WILL OPEN IF WINDING TEMPERATURE EXCEEDS 155°C. THIS ALLOWS FOR AN APPROXIMATE +10% HEADROOM IN THE CONTINUOUS TORQUE RATING BEFORE THERMOSTAT OPENS.

- MECHANICAL NOTES:**
- AXIAL LEAD: 50 LBS MAX
 - RADIAL LOAD: 100 LBS MAX @ 1" FROM FACE
 - MOTOR SEALED TO IP65.
 - MOTOR WEIGHT: 41.2 LBS. [18.7 Kg]
 - MOTOR FINISH: BLACK EPOXY
 - MOTOR OUTPUT SHAFT: STAINLESS STEEL
 - INCHES (MILLIMETERS)

FAILURE BRAKE:
MIN HOLDING TORQUE: 240 IN-LBS
INPUT VOLTAGE: 24 VOLTS

CONNECTION CHART

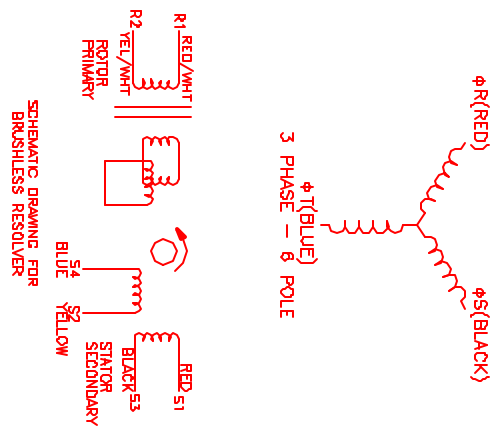
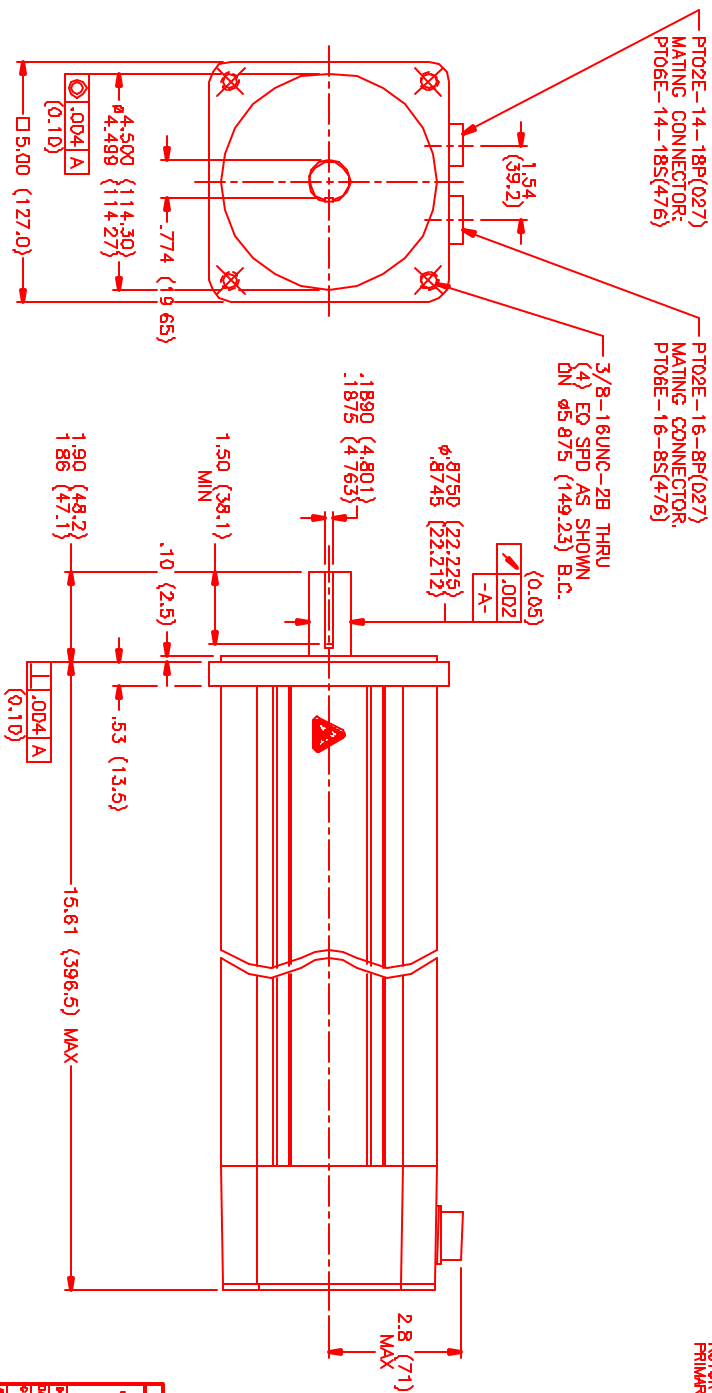
MOTOR/BRAKE CONNECTOR:
PT02E-16-8P(027)
(270-00032)

MOTOR/BRAKE WIRE LEADS	WIRE FUNCTION	WIRE COLOR
A	Φ R	RED
B	Φ S	BLACK
C	Φ T	BLUE
D	PE GND	GRN/YEL
E	BRK SHLD	-
F	BRK (+)	DIODE
G	BRK (-)	DIODE
H	-	-

RESOLVER/THERM CONNECTOR:
PT02E-14-18P(027)
(270-00024)

RES/THERM WIRE LEADS	WIRE FUNCTION	WIRE COLOR
U	THERM	BLACK
N	THERM	YELLOW
H	SIN	YELLOW
G	COS GND	BLACK
S	COS	BLACK
F	SIN GND	RED
R	REF GND	BLUE
E	REF	RED/WHI
D	RES. SHLD	GRN/YEL
P	GND	GRN/YEL
A	-	-
B	-	-
C	-	-
J	-	-
K	-	-
L	-	-
M	-	-
T	-	-

TITLE		REVISONS	
7/148/REV/ENR/CONV/BRK	REVISION	DATE	APP.
	PRELIMINARY	1/27/00	LIN



NO.	PART NUMBER	DESCRIPTION	QTY.
1	RESOLVER	MPS Systems Corporation Automation Division	
2	BRK	RESOLVER	
3	RESOLVER	RESOLVER	
4	RESOLVER	RESOLVER	
5	RESOLVER	RESOLVER	
6	RESOLVER	RESOLVER	
7	RESOLVER	RESOLVER	
8	RESOLVER	RESOLVER	
9	RESOLVER	RESOLVER	
10	RESOLVER	RESOLVER	
11	RESOLVER	RESOLVER	
12	RESOLVER	RESOLVER	
13	RESOLVER	RESOLVER	
14	RESOLVER	RESOLVER	
15	RESOLVER	RESOLVER	
16	RESOLVER	RESOLVER	
17	RESOLVER	RESOLVER	
18	RESOLVER	RESOLVER	
19	RESOLVER	RESOLVER	
20	RESOLVER	RESOLVER	
21	RESOLVER	RESOLVER	
22	RESOLVER	RESOLVER	
23	RESOLVER	RESOLVER	
24	RESOLVER	RESOLVER	
25	RESOLVER	RESOLVER	
26	RESOLVER	RESOLVER	
27	RESOLVER	RESOLVER	
28	RESOLVER	RESOLVER	
29	RESOLVER	RESOLVER	
30	RESOLVER	RESOLVER	
31	RESOLVER	RESOLVER	
32	RESOLVER	RESOLVER	
33	RESOLVER	RESOLVER	
34	RESOLVER	RESOLVER	
35	RESOLVER	RESOLVER	
36	RESOLVER	RESOLVER	
37	RESOLVER	RESOLVER	
38	RESOLVER	RESOLVER	
39	RESOLVER	RESOLVER	
40	RESOLVER	RESOLVER	
41	RESOLVER	RESOLVER	
42	RESOLVER	RESOLVER	
43	RESOLVER	RESOLVER	
44	RESOLVER	RESOLVER	
45	RESOLVER	RESOLVER	
46	RESOLVER	RESOLVER	
47	RESOLVER	RESOLVER	
48	RESOLVER	RESOLVER	
49	RESOLVER	RESOLVER	
50	RESOLVER	RESOLVER	
51	RESOLVER	RESOLVER	
52	RESOLVER	RESOLVER	
53	RESOLVER	RESOLVER	
54	RESOLVER	RESOLVER	
55	RESOLVER	RESOLVER	
56	RESOLVER	RESOLVER	
57	RESOLVER	RESOLVER	
58	RESOLVER	RESOLVER	
59	RESOLVER	RESOLVER	
60	RESOLVER	RESOLVER	
61	RESOLVER	RESOLVER	
62	RESOLVER	RESOLVER	
63	RESOLVER	RESOLVER	
64	RESOLVER	RESOLVER	
65	RESOLVER	RESOLVER	
66	RESOLVER	RESOLVER	
67	RESOLVER	RESOLVER	
68	RESOLVER	RESOLVER	
69	RESOLVER	RESOLVER	
70	RESOLVER	RESOLVER	
71	RESOLVER	RESOLVER	
72	RESOLVER	RESOLVER	
73	RESOLVER	RESOLVER	
74	RESOLVER	RESOLVER	
75	RESOLVER	RESOLVER	
76	RESOLVER	RESOLVER	
77	RESOLVER	RESOLVER	
78	RESOLVER	RESOLVER	
79	RESOLVER	RESOLVER	
80	RESOLVER	RESOLVER	
81	RESOLVER	RESOLVER	
82	RESOLVER	RESOLVER	
83	RESOLVER	RESOLVER	
84	RESOLVER	RESOLVER	
85	RESOLVER	RESOLVER	
86	RESOLVER	RESOLVER	
87	RESOLVER	RESOLVER	
88	RESOLVER	RESOLVER	
89	RESOLVER	RESOLVER	
90	RESOLVER	RESOLVER	
91	RESOLVER	RESOLVER	
92	RESOLVER	RESOLVER	
93	RESOLVER	RESOLVER	
94	RESOLVER	RESOLVER	
95	RESOLVER	RESOLVER	
96	RESOLVER	RESOLVER	
97	RESOLVER	RESOLVER	
98	RESOLVER	RESOLVER	
99	RESOLVER	RESOLVER	
100	RESOLVER	RESOLVER	