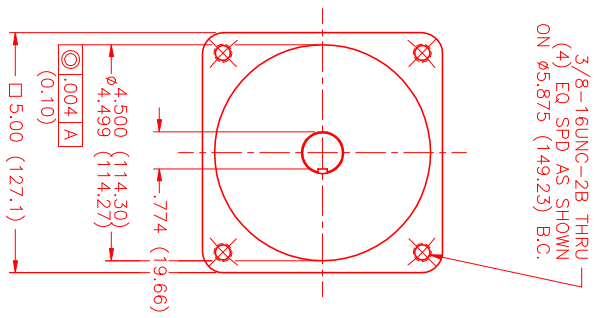


**MOTOR DATA @ 230 VAC (TRAP)**

MOTOR PARAMETERS	UNITS	VALUE
HORSEPOWER	HP	2.4
KILOWATTS	KW RATED	1.8
MAX. OPERATING SPEED	N MAX	2100
SPEED @ RATED TORQUE	RPM	1500
* CONTINUOUS RATED TORQUE @ 1500 RPM	IN-LBS [Nm]	104.0 [11.7]
* CONTINUOUS STALL TORQUE	IN-LBS [Nm]	116.2 [13.1]
CONTINUOUS LINE CURRENT	AMPS	9.4
PEAK CURRENT	IN-LBS [Nm]	406.7 [45.7]
MAX. THEORETICAL ACCEL.	AMPS	32.8
TORQUE SENSITIVITY	RAD/SEC <sup>2</sup>	41,081
BACK EMF (LINE TO LINE)	Kt [IN-LBS/AMP] [Nm/AMP]	12.4 [1.42]
D.C. RESISTANCE (P-P)	Vrms/Krpm	110.0
INDUCTANCE (P-P)	OHMS	1.1
ROTOR INERTIA W/BRAKE	MILLIHENRIES	8.1
STATIC FRICTION	Jm [IN-LBS-SEC <sup>2</sup> ] [Kg-M <sup>2</sup> ]	.0099 [0.0112]
	Tf [IN-LBS] [Nm]	1.8 [0.20]

\*25°C AMBIENT WITH A MAXIMUM CASE TEMPERATURE OF 100°C ON MOTOR. MOTOR MOUNTED ON A 12" X 12" X 1/2" ALUMINUM HEATSINK. THERMOSTAT IN STATOR WINDINGS WILL OPEN IF WINDING TEMPERATURE EXCEEDS 155°C. THIS ALLOWS FOR AN APPROXIMATE +10% HEADROOM IN THE CONTINUOUS TORQUE RATING BEFORE THERMOSTAT OPENS.

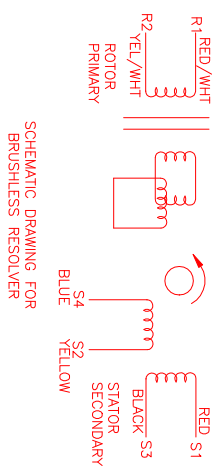
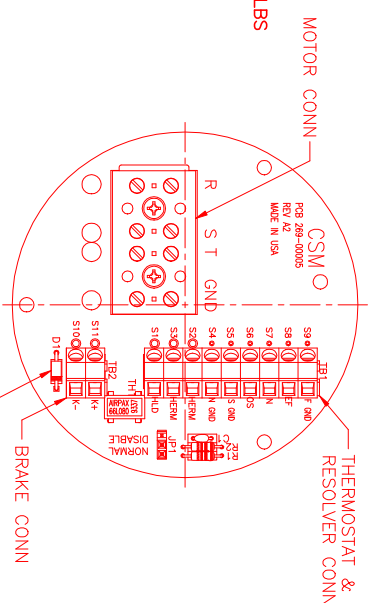
- MECHANICAL NOTES:**
- AXIAL LOAD: 50 LBS MAX
  - RADIAL LOAD: 100 LBS MAX @ 1" FROM FACE
  - MOTOR SEALED TO IP65.
  - MOTOR WEIGHT: 42.6 LBS. [ 19.3 kg ]
  - MOTOR FINISH: BLACK EPOXY
  - MOTOR OUTPUT SHAFT: STAINLESS STEEL
  - INCHES (MILLIMETERS)



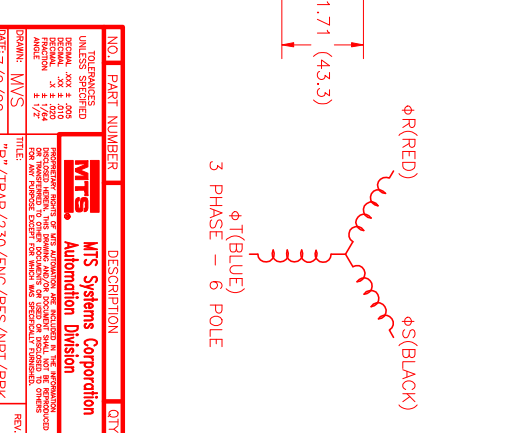
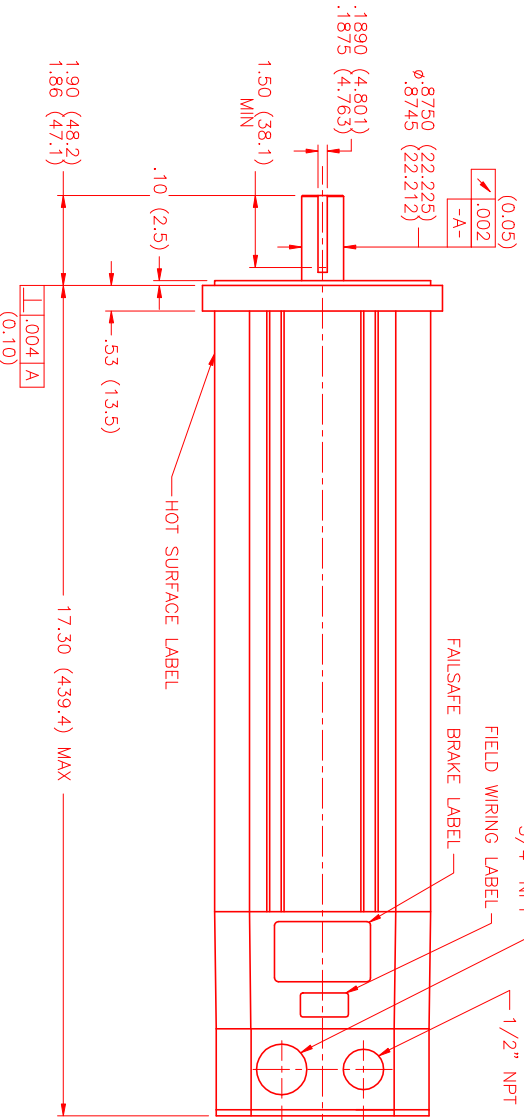
**CONNECTION CHART**

MOTOR WIRE LEADS	WIRE FUNCTION	WIRE COLOR
S1	BRK (+)	BLUE
S10	BRK (-)	BLUE
S9	REF GND	YEL/WHIT
S8	REF	RED/WHIT
S7	SIN	YELLOW
S6	COS	RED
S5	COS GND	BLACK
S4	SIN GND	BLUE
S3	THERM	BLACK
S2	THERM	BLACK
S1	RES SHLD	GRN/YEL

RES/THERM/BRAKE WIRE LEADS	WIRE FUNCTION	WIRE COLOR
S11	BRK (+)	BLUE
S10	BRK (-)	BLUE
S9	REF GND	YEL/WHIT
S8	REF	RED/WHIT
S7	SIN	YELLOW
S6	COS	RED
S5	COS GND	BLACK
S4	SIN GND	BLUE
S3	THERM	BLACK
S2	THERM	BLACK
S1	RES SHLD	GRN/YEL



SCHEMATIC DRAWING FOR BRUSHLESS RESOLVER



NO.	PART NUMBER	DESCRIPTION	QTY.
UNLESS SPECIFIED			
DRAWN	DATE	BY	APP'D
DESIGNED	7/9/99	MVS	
CHECKED			
APPROVED			

**MTS** Automation Division  
 MPM1143BTG6G3R  
 SCALE: 1/2:1