

MOTOR DATA @ 230 VAC (SINE)

MOTOR PARAMETERS	UNITS	VALUE
HORSEPOWER	HP RATED	2.4
KILOWATTS	KW RATED	1.8
MAX. OPERATING SPEED	N MAX	2100
SPEED @ RATED TORQUE	RPM	1500
* CONTINUOUS RATED TORQUE @ 1500 RPM	IN-LBS [Nm]	104.0 [11.7]
* CONTINUOUS STALL TORQUE	IN-LBS [Nm]	116.2 [13.1]
CONTINUOUS LINE CURRENT	AMPS (RMS/φ)	6.6
PEAK TORQUE	IN-LBS [Nm]	406.7 [45.7]
PEAK CURRENT	AMPS (RMS/φ)	23.2
MAX. THEORETICAL ACCEL.	RAD/SEC ²	42,811
TORQUE SENSITIVITY	Kt [N·BS/AMPRMS/φ] [Nm/AMPRMS/φ]	17.5 [1.98]
BACK EMF (LINE TO LINE)	Vrms/krpm	110.0
D.C. RESISTANCE (P-P)	OHMS	1.1
INDUCTANCE (P-P)	MILLIHENRIES	8.1
ROTOR INERTIA	Jm [IN-LBS-SEC ²] [Kg-M ²]	.0095 [0.00107]
STATIC FRICTION	Tf [IN-LBS] [Nm]	1.8 [2]

*25°C AMBIENT WITH A MAXIMUM CASE TEMPERATURE OF 100°C ON MOTOR. MOTOR MOUNTED ON A 12" X 12" X 1/2" ALUMINUM HEATSINK. THERMOSTAT IN STATOR WINDINGS WILL OPEN IF WINDING TEMPERATURE EXCEEDS 155°C. THIS ALLOWS FOR AN APPROXIMATE +10% HEADROOM IN THE CONTINUOUS TORQUE RATING BEFORE THERMOSTAT OPENS.

- MECHANICAL NOTES:**
- AXIAL LOAD: 50 LBS MAX
 - RADIAL LOAD: 100 LBS MAX @ 1" FROM FACE
 - MOTOR SEALED TO IP65.
 - MOTOR WEIGHT: 35.2 LBS. [16.0 kg]
 - MOTOR FINISH: BLACK EPOXY
 - MOTOR OUTPUT SHAFT: STAINLESS STEEL
 - MILLIMETERS (INCHES)

ENCODER: (290-00073)
OH48-2048P6-L6-5V

CONNECTION CHART

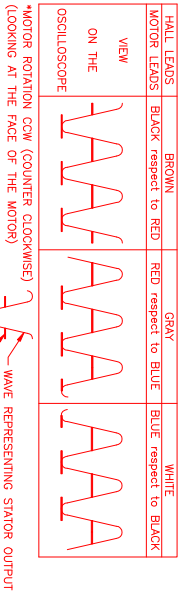
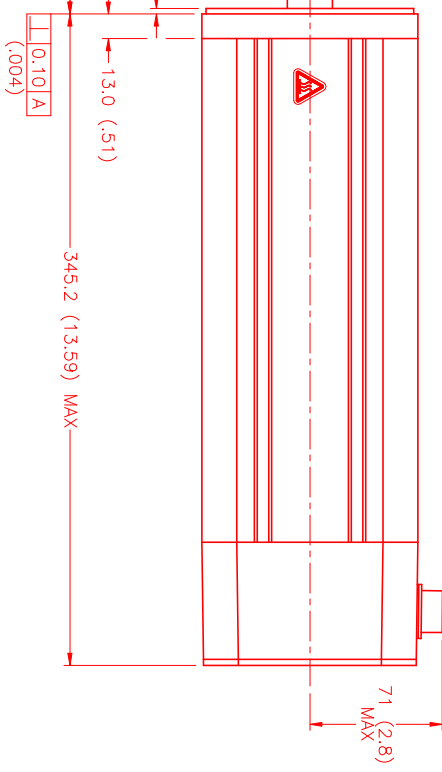
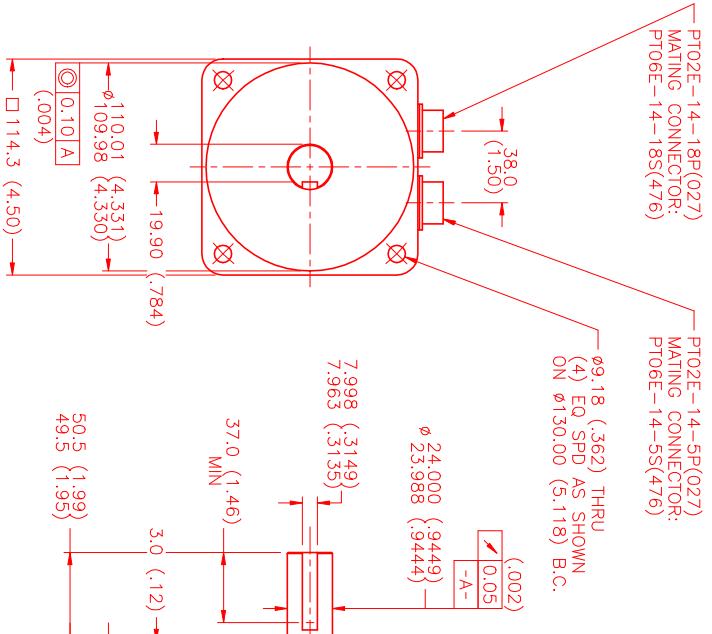
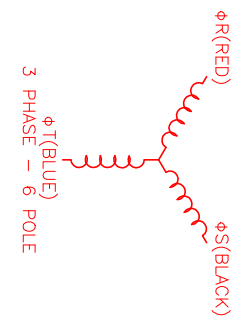
MOTOR CONNECTOR:
PT02E-14-5P(027)
(270-00026)

PIN	WIRE FUNCTION	WIRE COLOR
A	φR	RED
B	φS	BLACK
C	φT	BLUE
D	PE GND	GRN/YEL
E	-	-

ENCODER/THERM CONNECTOR:

PT02E-14-18P(027)
(270-00024)

PIN	WIRE FUNCTION	WIRE COLOR
T	GROUND	BLACK
K	+5VDC	RED
B	CH A	BLUE
C	CH A\	BLUE/BLK
N	CH B	GREEN
P	CH B\	GRN/BLK
M	CH Z	YELLOW
U	CH Z\	YEL/BLK
E	CH U	BROWN
R	CH U\	BRN/BLK
F	CH V	GRAY
S	CH V\	GRAY/BLK
G	CH W	WHITE
H	CH W\	WHT/BLK
D	GND/CABLE	SHLD
A	THERM	BLACK
L	THERM	BLACK
J	GND	GRN/YEL



REV.	DESCRIPTION	DATE	APPD.
1	PRELIMINARY	10/25/99	MVS

NO.	PART NUMBER	DESCRIPTION	QTY.
UNLESS SPECIFIED			
DESIGN: MVS			
DATE: 10/25/99			
CHECKED:			
APPROVED:			
SCALE: 1/2:1			

MTS
Automation Division

FORMING NUMBER: MPM1143BSG7JY1N