

MOTOR DATA @ 230 VAC (TRAP)

MOTOR PARAMETERS	UNITS	VALUE
HORSEPOWER	HP RATED	3.3
KILOWATTS	KW RATED	2.5
MAX. OPERATING SPEED	N MAX	4200
SPEED @ RATED TORQUE	RPM	3000
* CONTINUOUS RATED TORQUE @ 3000 RPM	IN-LBS [Nm]	69.1 [7.8]
* CONTINUOUS STALL TORQUE	IN-LBS [Nm]	83.0 [9.3]
CONTINUOUS LINE CURRENT	AMPS	13.4
PEAK CURRENT	AMPS	290.5 [32.7]
MAX. THEORETICAL ACCEL.	RAD/SEC ²	46.8
TORQUE SENSITIVITY	Kt IN-LBS/AMP [Nm/AMP]	41.500
BACK EMF (LINE TO LINE)	Vrms/Krpm	6.2 [0.71]
D.C. RESISTANCE (P-P)	OHMS	55.0
INDUCTANCE (P-P)	MILLIHENRIES	0.40
ROTOR INERTIA W/BRAKE	Jm [IN-LBS-SEC ²] Kg-M ²	2.8
STATIC FRICTION	Tf [IN-LBS] [Nm]	.0070 [0.0079]

CONNECTION CHART

MOTOR/BRAKE CONNECTOR:
PT02E-16-8P(027)
(270-00032)

PIN	WIRE FUNCTION	WIRE COLOR
A	ΦR	RED
B	ΦS	BLACK
C	ΦT	BLUE
D	PE SHLD	GRN/YEL
E	BRK SHLD	-
F	BRK (+)	DIODE
G	BRK (-)	1N4007
H	-	-

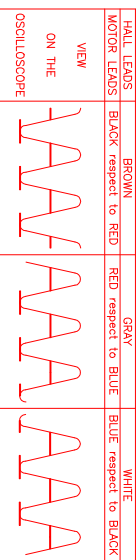
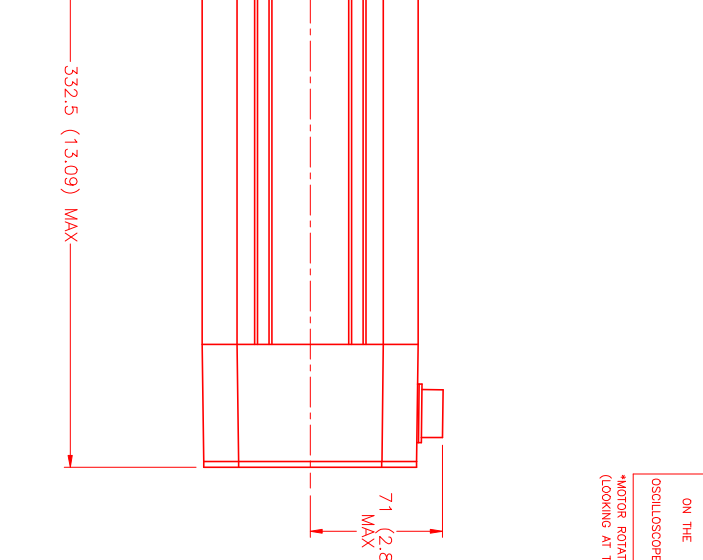
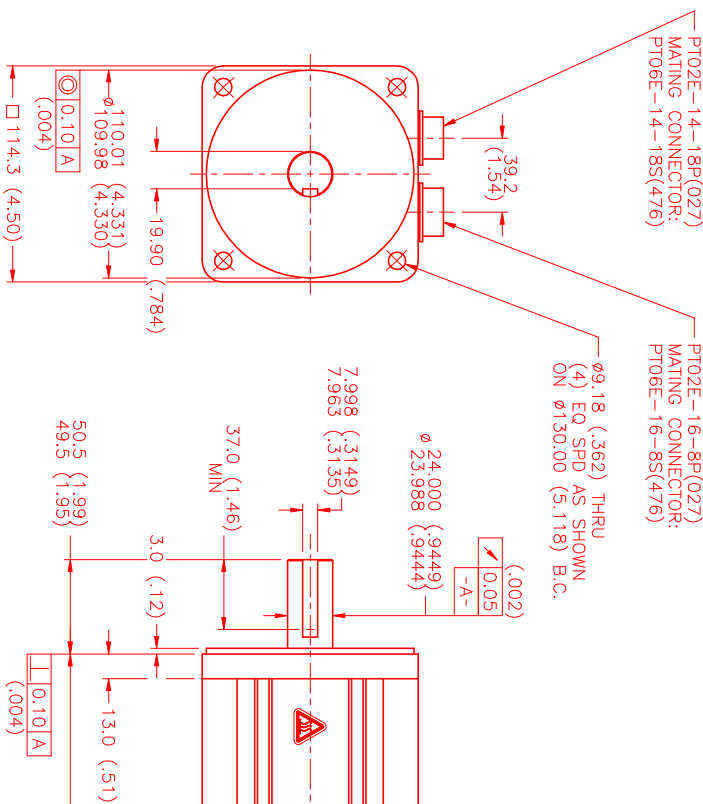
ENCODER/THERM CONNECTOR:
PT02E-14-18P(027)
(270-00024)

PIN	WIRE FUNCTION	WIRE COLOR
T	GROUND	BLACK
K	+5VDC	RED
B	CH A	BLUE
C	CH A	BLUE/BLK
N	CH B	GREEN
P	CH B	GRN/BLK
M	CH Z	YELLOW
U	CH Z	YEL/BLK
E	CH U	BROWN
R	CH U	BRN/BLK
F	CH V	GRAY
S	CH V	GRAY/BLK
G	CH W	WHITE
H	CH W	WHT/BLK
D	GND/CABLE SHLD	BLK
A	THERM	BLACK
L	THERM	BLACK
J	GND	GRN/YEL

*25°C AMBIENT WITH A MAXIMUM CASE TEMPERATURE OF 100°C ON MOTOR. MOTOR MOUNTED ON A 12" X 12" X 1/2" ALUMINUM HEATSINK. THERMOSTAT IN STATOR WINDINGS WILL OPEN IF WINDING TEMPERATURE EXCEEDS 155°C. THIS ALLOWS FOR AN APPROXIMATE +10% HEADROOM IN THE CONTINUOUS TORQUE RATING BEFORE THERMOSTAT OPENS.

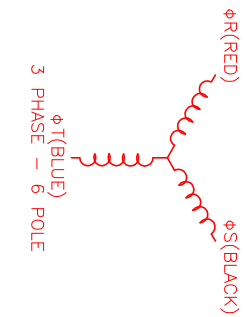
- MECHANICAL NOTES:**
- AXIAL LOAD: 50 LBS MAX
 - RADIAL LOAD: 100 LBS MAX @ 1" FROM FACE
 - MOTOR SEALED TO IP65.
 - MOTOR WEIGHT: 31.8 LBS. [14.4 kg]
 - MOTOR FINISH: BLACK EPOXY
 - MOTOR OUTPUT SHAFT: STAINLESS STEEL
 - MILLIMETERS (INCHES)

ENCODER: (290-00052)
OIH48-2000P6-L6-5V
FAILSAFE BRAKE:
MIN HOLDING TORQUE: 240 IN-LBS
INPUT VOLTAGE: 24 VOLTS



*MOTOR ROTATION C/W (COUNTER CLOCKWISE) (LOOKING AT THE FACE OF THE MOTOR)

WAVE REPRESENTING STATOR OUTPUT
WAVE REPRESENTING HALL SENSOR



NO.	PART NUMBER	DESCRIPTION	QTY.
UNLDES	REVISED		
DATE: 7/20/99	BY: MVS		
APPROVED:			

MTS MTS Systems Corporation
Automation Division

RESISTIVE HEATING OF THE MOTOR IS LIMITED IN THE PROPORTION TO THE SQUARE OF THE CURRENT. THE MOTOR IS NOT TO BE OPERATED AT A CURRENT EXCEEDING THE RATED CURRENT. THE MOTOR IS NOT TO BE OPERATED AT A CURRENT EXCEEDING THE RATED CURRENT.

SCALE: 1/2:1

DATE: 7/20/99

REVISIONS

REV.	DESCRIPTION	DATE	APPD.
1	PRELIMINARY	7/20/99	MVS

NUMBER: MPM1142ATG7JN1R