

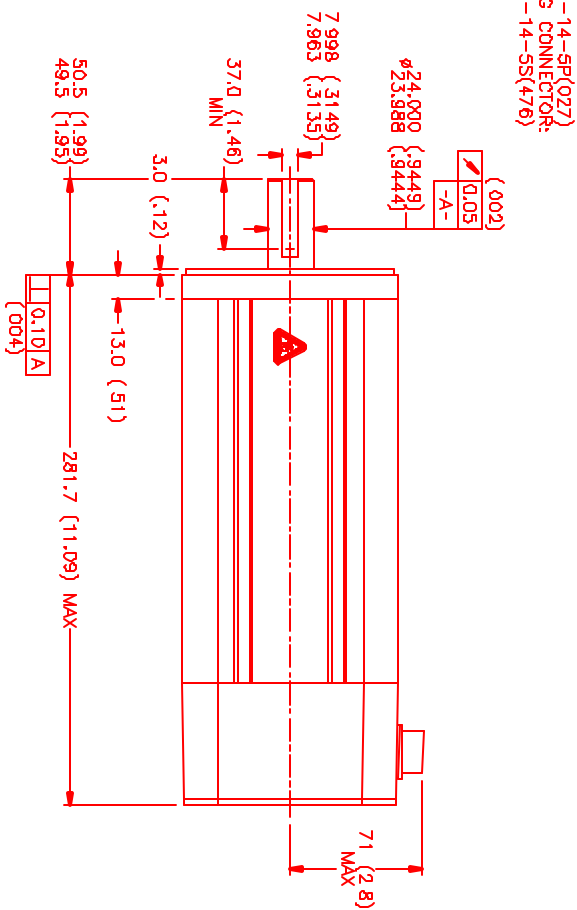
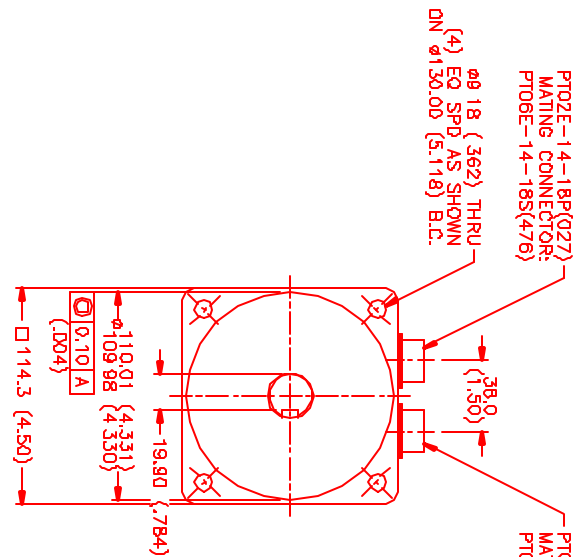
MOTOR DATA @ 230 VAC (SINE)

MOTOR PARAMETERS	UNITS	VALUE
MOTOR HORSEPOWER	HP	3.3
KILOWATTS	KW	2.5
MAX. OPERATING SPEED	N MAX	4200
SPEED @ RATED TORQUE	N RATED	3000
* CONTINUOUS RATED TORQUE	IN-LBS [Nm]	69.1 [7.8]
* CONTINUOUS STALL TORQUE	IN-LBS [Nm]	83.0 [9.3]
CONTINUOUS LINE CURRENT	AMPS [RMS/Φ]	9.5
PEAK CURRENT	IN-LBS [Nm]	290.5 [32.7]
MAX. THEORETICAL ACCEL	AMPS [RMS/Φ]	33.1
TORQUE SENSITIVITY	RD/SEC*	44.015
BACK EMF (LINE TO LINE)	IN-LBS [Nm]	8.74 [0.99]
D.G. RESISTANCE (P-P)	Vrms/Krpm	55.0
INDUCTANCE (P-P)	OHMS	0.40
ROTOR INERTIA	g·m ²	2.8
STATIC FRICTION	IN-LBS-SEC ² [Kg-M ²]	0.0066 [0.00074]
	IN-LBS [Nm]	1.4 [0.16]

*25°C AMBIENT WITH A MAXIMUM CASE TEMPERATURE OF 100°C ON MOTOR. MOTOR MOUNTED ON A 12" X 12" X 1/2" ALUMINUM HEATSINK. THERMOSTAT IN STATOR WINDINGS WILL OPEN IF WINDING TEMPERATURE EXCEEDS 155°C. THIS ALLOWS FOR AN APPROXIMATE +10% HEADROOM IN THE CONTINUOUS TORQUE RATING BEFORE THERMOSTAT OPENS.

- MECHANICAL NOTES:**
- AXIAL LEAD: 50 LBS MAX
 - RADIAL LOAD: 100 LBS MAX @ 1" FROM FACE
 - MOTOR SEALED TO IP65.
 - MOTOR WEIGHT: 26.4 LBS. [12.0 Kg]
 - MOTOR FINISH: BLACK EPOXY
 - MOTOR OUTPUT SHAFT: STAINLESS STEEL
 - MILLIMETERS (INCHES)

ENCODER: (290-00073)
DH48-2048P8-L8-5V



CONNECTION CHART
ENCODER/THERM CONNECTOR.
PT02E-14-18P(027)
(270-00024)

ENC/THERM	WIRE	LEADS
PIN	FUNCTION	WIRE COLOR
T	GROUND	BLACK
K	+5VDC	RED
B	CH A	BLUE
C	CH A	BLUE/BLK
N	CH B	GREEN
P	CH B	GRN/BLK
M	CH Z	YELLOW
U	CH Z	YEL/BLK
E	CH U	BROWN
R	CH U	BRN/BLK
F	CH V	GRAY
S	CH V	GRAY/BLK
G	CH W	WHITE
H	CH W	WHT/BLK
D	GN/D/GAIE	SHLD
A	THERM	BLACK
L	THERM	BLACK
J	GN/D	GRN/YEL

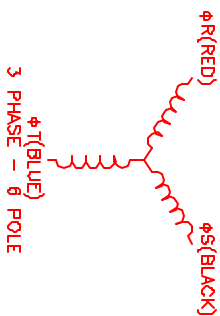
MOTOR CONNECTOR:
PT02E-14-5P(027)
(270-00026)

MOTOR WIRE	LEADS
PIN	FUNCTION
A	ΦR
B	ΦS
C	ΦT
D	PE GND
E	-

MOTOR & HALL POSITION CHART

HALL LEADS	BROWN	GRAY	WHITE
MOTOR LEADS	BLACK	RED	BLUE
VIEW	ON THE	ON THE	ON THE
OSCOPE	WAVEFORM	WAVEFORM	WAVEFORM

MOTOR ROTATION (CW (COUNTER CLOCKWISE) (LOOKING AT THE EDGE OF THE MOTOR)



REV	REVISION	DATE	APP.
1	PRELIMINARY	4/19/00	M/S

NO.	PART NUMBER	DESCRIPTION	QTY.
1	MPM1142ASG7J1N	M/S Systems Corporation Automation Division	1/21