

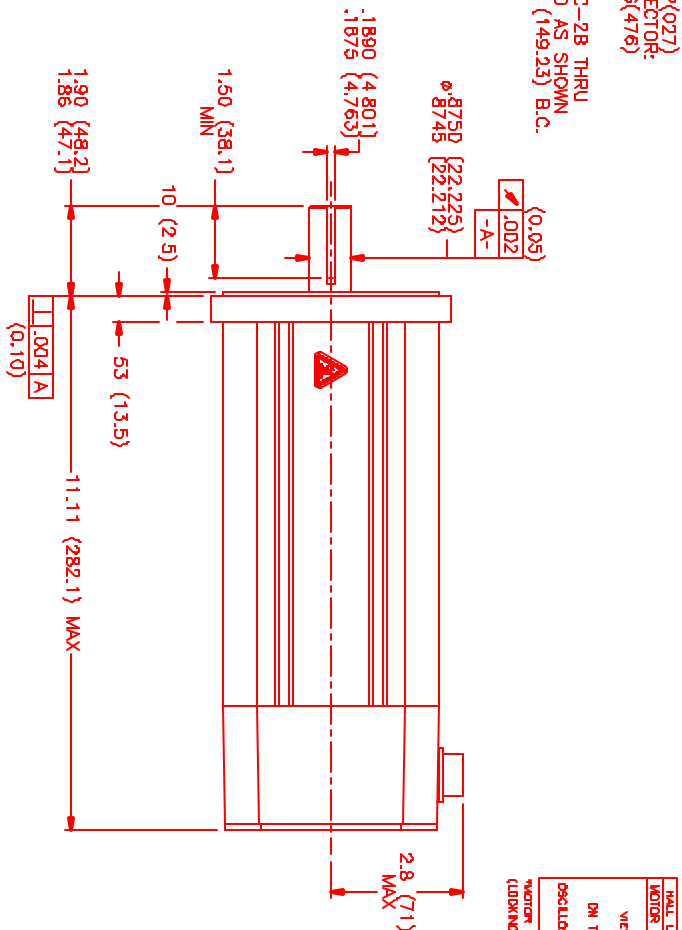
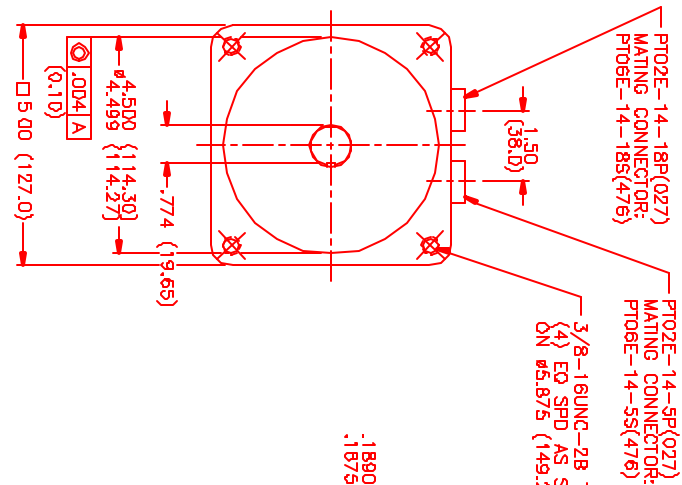
MOTOR DATA @ 230 VAC (SINE)

MOTOR PARAMETERS	UNITS	VALUE
MOTOR HORSEPOWER	HP RATED	3.3
	KW RATED	2.5
MAX. OPERATING SPEED	N MAX RPM	4200
SPEED @ RATED TORQUE	N RATED RPM	3000
* CONTINUOUS RATED TORQUE	N-LEBS [Nm]	69.1 (7.9)
* CONTINUOUS STALL TORQUE	N-LEBS [Nm]	83.0 (9.5)
CONTINUOUS LINE CURRENT	AMPS (RMS/Φ)	9.5
PEAK TORQUE	N-LEBS [Nm]	290.5 (33.7)
PEAK CURRENT	AMPS (RMS/Φ)	32.7
MAX. THEORETICAL ACCEL	RAD/SEC*	44.015
TORQUE SENSITIVITY	Kt [N-LEBS/AMPS/Φ] / [Nm/AMPS/Φ]	8.71 (99)
BACK EMF (LINE TO LINE)	Vrms/Krpm	55.0
D.C. RESISTANCE (P-P)	Ω RMS	.40
INDUCTANCE (P-P)	MILLIHENRIES	2.8
ROTOR INERTIA	μm [N-LEBS-SEC ² /Kg-M ²]	.00661 (0.0074)
STATIC FRICTION	μf [N-LEBS [Nm]	1.4 (1.6)

*25°C AMBIENT WITH A MAXIMUM CASE TEMPERATURE OF 100°C ON MOTOR. MOTOR MOUNTED ON A 12" X 12" X 1/2" ALUMINUM HEAT SINK. THERMOSTAT IN STATOR WINDINGS WILL OPEN IF WINDING TEMPERATURE EXCEEDS 155°C. THIS ALLOWS FOR AN APPROXIMATE +10% HEADROOM IN THE CONTINUOUS TORQUE RATING BEFORE THERMOSTAT OPENS.

- MECHANICAL NOTES:**
- AXIAL LOAD: 50 LBS MAX
 - RADIAL LOAD: 100 LBS MAX @ 1" FROM FACE
 - MOTOR SEALED TO IP65.
 - MOTOR WEIGHT: 26.8 LBS [12.1 Kg]
 - MOTOR FINISH: BLACK EPOXY
 - MOTOR OUTPUT SHAFT: STAINLESS STEEL
 - INCHES (MILLIMETERS)

ENCODER: (290-00023)
DH48-2048P8-L6-SV



CONNECTION CHART
MOTOR CONNECTOR:
PT02E-14-5P(027)
(270-00026)

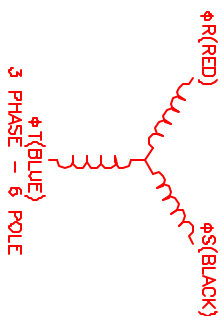
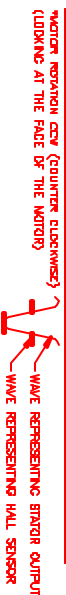
PIN	WIRE FUNCTION	WIRE COLOR
A	ΦR	RED
B	ΦS	BLACK
C	ΦT	BLUE
D	PE GND	GRN/YEL
E	-	-

ENCODER/THERM CONNECTOR:
PT02E-14-18P(027)
(270-00024)

PIN	WIRE FUNCTION	WIRE COLOR
T	GROUND	BLACK
K	+5VDC	RED
B	CH A	BLUE
C	CH A	BLUE/BLK
N	CH B	GREEN
P	CH B	GREEN/BLK
M	CH Z	YELLOW
U	CH Z	YEL/BLK
E	CH U	BROWN
R	CH U	BROWN/BLK
F	CH V	GRAY
S	CH V	GRAY/BLK
G	CH W	WHITE
H	CH W	WHITE/BLK
D	GND/CABLE SHIELD	BLACK
A	THERM	BLACK
L	THERM	BLACK
J	GND	GRN/YEL

MOTOR & HALL POSITION CHART

HALL LEADS	BROWN	GRAY	WHITE
BLACK (wired to RED)	RED (wired to BLUE)	BLUE (wired to BLACK)	



NO.	PART NUMBER	DESCRIPTION	QTY.
1	PT02E-14-5P(027)	MOTOR CONNECTOR	1
2	PT02E-14-18P(027)	ENCODER/THERM CONNECTOR	1
3	PT02E-14-5P(027)	MOTOR CONNECTOR	1
4	PT02E-14-18P(027)	ENCODER/THERM CONNECTOR	1
5	PT02E-14-5P(027)	MOTOR CONNECTOR	1
6	PT02E-14-18P(027)	ENCODER/THERM CONNECTOR	1
7	PT02E-14-5P(027)	MOTOR CONNECTOR	1
8	PT02E-14-18P(027)	ENCODER/THERM CONNECTOR	1
9	PT02E-14-5P(027)	MOTOR CONNECTOR	1
10	PT02E-14-18P(027)	ENCODER/THERM CONNECTOR	1
11	PT02E-14-5P(027)	MOTOR CONNECTOR	1
12	PT02E-14-18P(027)	ENCODER/THERM CONNECTOR	1
13	PT02E-14-5P(027)	MOTOR CONNECTOR	1
14	PT02E-14-18P(027)	ENCODER/THERM CONNECTOR	1
15	PT02E-14-5P(027)	MOTOR CONNECTOR	1
16	PT02E-14-18P(027)	ENCODER/THERM CONNECTOR	1
17	PT02E-14-5P(027)	MOTOR CONNECTOR	1
18	PT02E-14-18P(027)	ENCODER/THERM CONNECTOR	1
19	PT02E-14-5P(027)	MOTOR CONNECTOR	1
20	PT02E-14-18P(027)	ENCODER/THERM CONNECTOR	1
21	PT02E-14-5P(027)	MOTOR CONNECTOR	1
22	PT02E-14-18P(027)	ENCODER/THERM CONNECTOR	1
23	PT02E-14-5P(027)	MOTOR CONNECTOR	1
24	PT02E-14-18P(027)	ENCODER/THERM CONNECTOR	1
25	PT02E-14-5P(027)	MOTOR CONNECTOR	1
26	PT02E-14-18P(027)	ENCODER/THERM CONNECTOR	1
27	PT02E-14-5P(027)	MOTOR CONNECTOR	1
28	PT02E-14-18P(027)	ENCODER/THERM CONNECTOR	1
29	PT02E-14-5P(027)	MOTOR CONNECTOR	1
30	PT02E-14-18P(027)	ENCODER/THERM CONNECTOR	1
31	PT02E-14-5P(027)	MOTOR CONNECTOR	1
32	PT02E-14-18P(027)	ENCODER/THERM CONNECTOR	1
33	PT02E-14-5P(027)	MOTOR CONNECTOR	1
34	PT02E-14-18P(027)	ENCODER/THERM CONNECTOR	1
35	PT02E-14-5P(027)	MOTOR CONNECTOR	1
36	PT02E-14-18P(027)	ENCODER/THERM CONNECTOR	1
37	PT02E-14-5P(027)	MOTOR CONNECTOR	1
38	PT02E-14-18P(027)	ENCODER/THERM CONNECTOR	1
39	PT02E-14-5P(027)	MOTOR CONNECTOR	1
40	PT02E-14-18P(027)	ENCODER/THERM CONNECTOR	1
41	PT02E-14-5P(027)	MOTOR CONNECTOR	1
42	PT02E-14-18P(027)	ENCODER/THERM CONNECTOR	1
43	PT02E-14-5P(027)	MOTOR CONNECTOR	1
44	PT02E-14-18P(027)	ENCODER/THERM CONNECTOR	1
45	PT02E-14-5P(027)	MOTOR CONNECTOR	1
46	PT02E-14-18P(027)	ENCODER/THERM CONNECTOR	1
47	PT02E-14-5P(027)	MOTOR CONNECTOR	1
48	PT02E-14-18P(027)	ENCODER/THERM CONNECTOR	1
49	PT02E-14-5P(027)	MOTOR CONNECTOR	1
50	PT02E-14-18P(027)	ENCODER/THERM CONNECTOR	1
51	PT02E-14-5P(027)	MOTOR CONNECTOR	1
52	PT02E-14-18P(027)	ENCODER/THERM CONNECTOR	1
53	PT02E-14-5P(027)	MOTOR CONNECTOR	1
54	PT02E-14-18P(027)	ENCODER/THERM CONNECTOR	1
55	PT02E-14-5P(027)	MOTOR CONNECTOR	1
56	PT02E-14-18P(027)	ENCODER/THERM CONNECTOR	1
57	PT02E-14-5P(027)	MOTOR CONNECTOR	1
58	PT02E-14-18P(027)	ENCODER/THERM CONNECTOR	1
59	PT02E-14-5P(027)	MOTOR CONNECTOR	1
60	PT02E-14-18P(027)	ENCODER/THERM CONNECTOR	1
61	PT02E-14-5P(027)	MOTOR CONNECTOR	1
62	PT02E-14-18P(027)	ENCODER/THERM CONNECTOR	1
63	PT02E-14-5P(027)	MOTOR CONNECTOR	1
64	PT02E-14-18P(027)	ENCODER/THERM CONNECTOR	1
65	PT02E-14-5P(027)	MOTOR CONNECTOR	1
66	PT02E-14-18P(027)	ENCODER/THERM CONNECTOR	1
67	PT02E-14-5P(027)	MOTOR CONNECTOR	1
68	PT02E-14-18P(027)	ENCODER/THERM CONNECTOR	1
69	PT02E-14-5P(027)	MOTOR CONNECTOR	1
70	PT02E-14-18P(027)	ENCODER/THERM CONNECTOR	1
71	PT02E-14-5P(027)	MOTOR CONNECTOR	1
72	PT02E-14-18P(027)	ENCODER/THERM CONNECTOR	1
73	PT02E-14-5P(027)	MOTOR CONNECTOR	1
74	PT02E-14-18P(027)	ENCODER/THERM CONNECTOR	1
75	PT02E-14-5P(027)	MOTOR CONNECTOR	1
76	PT02E-14-18P(027)	ENCODER/THERM CONNECTOR	1
77	PT02E-14-5P(027)	MOTOR CONNECTOR	1
78	PT02E-14-18P(027)	ENCODER/THERM CONNECTOR	1
79	PT02E-14-5P(027)	MOTOR CONNECTOR	1
80	PT02E-14-18P(027)	ENCODER/THERM CONNECTOR	1
81	PT02E-14-5P(027)	MOTOR CONNECTOR	1
82	PT02E-14-18P(027)	ENCODER/THERM CONNECTOR	1
83	PT02E-14-5P(027)	MOTOR CONNECTOR	1
84	PT02E-14-18P(027)	ENCODER/THERM CONNECTOR	1
85	PT02E-14-5P(027)	MOTOR CONNECTOR	1
86	PT02E-14-18P(027)	ENCODER/THERM CONNECTOR	1
87	PT02E-14-5P(027)	MOTOR CONNECTOR	1
88	PT02E-14-18P(027)	ENCODER/THERM CONNECTOR	1
89	PT02E-14-5P(027)	MOTOR CONNECTOR	1
90	PT02E-14-18P(027)	ENCODER/THERM CONNECTOR	1
91	PT02E-14-5P(027)	MOTOR CONNECTOR	1
92	PT02E-14-18P(027)	ENCODER/THERM CONNECTOR	1
93	PT02E-14-5P(027)	MOTOR CONNECTOR	1
94	PT02E-14-18P(027)	ENCODER/THERM CONNECTOR	1
95	PT02E-14-5P(027)	MOTOR CONNECTOR	1
96	PT02E-14-18P(027)	ENCODER/THERM CONNECTOR	1
97	PT02E-14-5P(027)	MOTOR CONNECTOR	1
98	PT02E-14-18P(027)	ENCODER/THERM CONNECTOR	1
99	PT02E-14-5P(027)	MOTOR CONNECTOR	1
100	PT02E-14-18P(027)	ENCODER/THERM CONNECTOR	1

REV.	DESCRIPTION	DATE	APP.
1	PRELIMINARY	1/27/00	LIN

NO.	PART NUMBER	DESCRIPTION	QTY.
1	PT02E-14-5P(027)	MOTOR CONNECTOR	1
2	PT02E-14-18P(027)	ENCODER/THERM CONNECTOR	1
3	PT02E-14-5P(027)	MOTOR CONNECTOR	1
4	PT02E-14-18P(027)	ENCODER/THERM CONNECTOR	1
5	PT02E-14-5P(027)	MOTOR CONNECTOR	1
6	PT02E-14-18P(027)	ENCODER/THERM CONNECTOR	1
7	PT02E-14-5P(027)	MOTOR CONNECTOR	1
8	PT02E-14-18P(027)	ENCODER/THERM CONNECTOR	1
9	PT02E-14-5P(027)	MOTOR CONNECTOR	1
10	PT02E-14-18P(027)	ENCODER/THERM CONNECTOR	1
11	PT02E-14-5P(027)	MOTOR CONNECTOR	1
12	PT02E-14-18P(027)	ENCODER/THERM CONNECTOR	1
13	PT02E-14-5P(027)	MOTOR CONNECTOR	1
14	PT02E-14-18P(027)	ENCODER/THERM CONNECTOR	1
15	PT02E-14-5P(027)	MOTOR CONNECTOR	1
16	PT02E-14-18P(027)	ENCODER/THERM CONNECTOR	1
17	PT02E-14-5P(027)	MOTOR CONNECTOR	1
18	PT02E-14-18P(027)	ENCODER/THERM CONNECTOR	1
19	PT02E-14-5P(027)	MOTOR CONNECTOR	1
20	PT02E-14-18P(027)	ENCODER/THERM CONNECTOR	1
21	PT02E-14-5P(027)	MOTOR CONNECTOR	1
22	PT02E-14-18P(027)	ENCODER/THERM CONNECTOR	1
23	PT02E-14-5P(027)	MOTOR CONNECTOR	1
24	PT02E-14-18P(027)	ENCODER/THERM CONNECTOR	1
25	PT02E-14-5P(027)	MOTOR CONNECTOR	1
26	PT02E-14-18P(027)	ENCODER/THERM CONNECTOR	1
27	PT02E-14-5P(027)	MOTOR CONNECTOR	1
28	PT02E-14-18P(027)	ENCODER/THERM CONNECTOR	1
29	PT02E-14-5P(027)	MOTOR CONNECTOR	1
30	PT02E-14-18P(027)	ENCODER/THERM CONNECTOR	1
31	PT02E-14-5P(027)	MOTOR CONNECTOR	1
32	PT02E-14-18P(027)	ENCODER/THERM CONNECTOR	1
33	PT02E-14-5P(027)	MOTOR CONNECTOR	1
34	PT02E-14-18P(027)	ENCODER/THERM CONNECTOR	1
35	PT02E-14-5P(027)	MOTOR CONNECTOR	1
36	PT02E-14-18P(027)	ENCODER/THERM CONNECTOR	1
37	PT02E-14-5P(027)	MOTOR CONNECTOR	1
38	PT02E-14-18P(027)	ENCODER/THERM CONNECTOR	1
39	PT02E-14-5P(027)	MOTOR CONNECTOR	1
40	PT02E-14-18P(027)	ENCODER/THERM CONNECTOR	1
41	PT02E-14-5P(027)	MOTOR CONNECTOR	1
42	PT02E-14-18P(027)	ENCODER/THERM CONNECTOR	1
43	PT02E-14-5P(027)	MOTOR CONNECTOR	1
44	PT02E-14-18P(027)	ENCODER/THERM CONNECTOR	1
45	PT02E-14-5P(027)	MOTOR CONNECTOR	1
46	PT02E-14-18P(027)	ENCODER/THERM CONNECTOR	1
47	PT02E-14-5P(027)	MOTOR CONNECTOR	1
48	PT02E-14-18P(027)	ENCODER/THERM CONNECTOR	1
49	PT02E-14-5P(027)	MOTOR CONNECTOR	1
50	PT02E-14-18P(027)	ENCODER/THERM CONNECTOR	1
51	PT02E-14-5P(027)	MOTOR CONNECTOR	1
52	PT02E-14-18P(027)	ENCODER/THERM CONNECTOR	1
53	PT02E-14-5P(027)	MOTOR CONNECTOR	1
54	PT02E-14-18P(027)	ENCODER/THERM CONNECTOR	1
55	PT02E-14-5P(027)	MOTOR CONNECTOR	1
56	PT02E-14-18P(027)	ENCODER/THERM CONNECTOR	1
57	PT02E-14-5P(027)	MOTOR CONNECTOR	1
58	PT02E-14-18P(027)	ENCODER/THERM CONNECTOR	1
59	PT02E-14-5P(027)	MOTOR CONNECTOR	1
60	PT02E-14-18P(027)	ENCODER/THERM CONNECTOR	1
61	PT02E-14-5P(027)	MOTOR CONNECTOR	1
62	PT02E-14-18P(027)	ENCODER/THERM CONNECTOR	1
63	PT02E-14-5P(027)	MOTOR CONNECTOR	1
64	PT02E-14-18P(027)	ENCODER/THERM CONNECTOR	1
65	PT02E-14-5P(027)	MOTOR CONNECTOR	1
66	PT02E-14-18P(027)	ENCODER/THERM CONNECTOR	1
67	PT02E-14-5P(027)	MOTOR CONNECTOR	1
68	PT02E-14-18P(027)	ENCODER/THERM CONNECTOR	1
69	PT02E-14-5P(027)	MOTOR CONNECTOR	1
70	PT02E-14-18P(027)	ENCODER/THERM CONNECTOR	1
71	PT02E-14-5P(027)	MOTOR CONNECTOR	1
72	PT02E-14-18P(027)	ENCODER/THERM CONNECTOR	1
73	PT02E-14-5P(027)	MOTOR CONNECTOR	1