

MOTOR DATA @ 460 VAC (TRAP)

MOTOR PARAMETERS	UNITS	VALUE
HORSEPOWER	HP	2.1
KILOWATTS	KW RATED	1.6
MAX. OPERATING SPEED	N MAX	4200
SPEED @ RATED TORQUE	RPM	3000
* CONTINUOUS RATED TORQUE @ 3000 RPM	IN-LBS[Nm]	45.0[5.1]
* CONTINUOUS STALL TORQUE	IN-LBS[Nm]	54.0[6.1]
CONTINUOUS LINE CURRENT	AMPS	4.4
PEAK TORQUE	IN-LBS[Nm]	189.1[21.3]
PEAK CURRENT	AMPS	15.3
MAX. THEORETICAL ACCEL	RD/SEC ²	54.028
TORQUE SENSITIVITY	K[IN-LBS/AMF]/[Nm/AMF]	12.4[1.42]
BACK EMF (LINE TO LINE)	Vrms/Krpm	110.0
D.C. RESISTANCE (P-P)	OHMS	3.2
INDUCTANCE (P-P)	MILLIHENRIES	24.0
ROTOR INERTIA	IN-LBS-SEC ² [Kg-M ²]	.00351[0.00039]
STATIC FRICTION	Tf	1.0[.11]

*25°C AMBIENT WITH A MAXIMUM CASE TEMPERATURE OF 100°C ON MOTOR. MOTOR MOUNTED ON A 12" X 12" X 1/2" ALUMINUM HEATSINK. THERMOSTAT IN STATOR WINDINGS WILL OPEN IF WINDING TEMPERATURE EXCEEDS 155°C. THIS ALLOWS FOR AN APPROXIMATE +10% HEADROOM IN THE CONTINUOUS TORQUE RATING BEFORE THERMOSTAT OPENS.

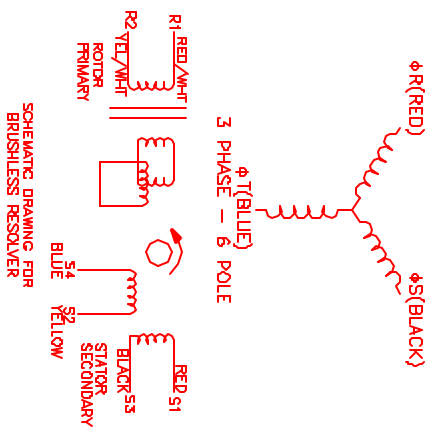
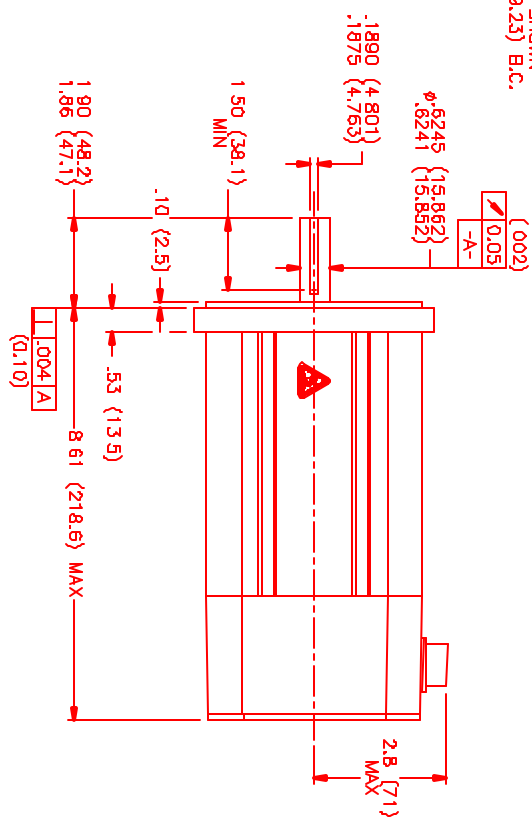
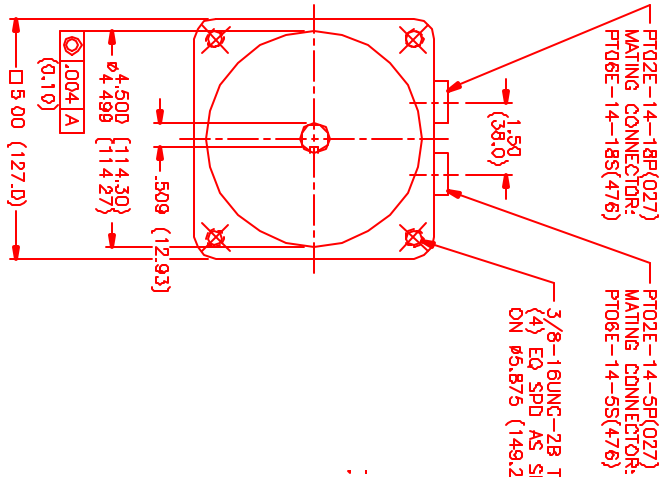
- MECHANICAL NOTES:**
1. AXIAL LOAD: 50 LBS MAX
 2. RADIAL LOAD: 100 LBS MAX @ 1" FROM FACE
 3. MOTOR SEALED TO IP65.
 4. MOTOR WEIGHT: 18.4 LBS. [8.3 Kg]
 5. MOTOR FINISH: BLACK EPOXY
 6. MOTOR OUTPUT SHAFT: STAINLESS STEEL
 7. INCHES (MILLIMETERS)

CONNECTION CHART
MOTOR CONNECTOR:
PT02E-14-8P(027)
(270-00028)

PIN	WIRE FUNCTION	WIRE COLOR
A	ΦR	RED
B	ΦS	BLACK
C	ΦT	BLUE
D	PE GND	GRN/YEL
E	-	-

RESOLVER/THERM CONNECTOR
PT02E-14-18P(027)
(270-00024)

PIN	WIRE FUNCTION	WIRE COLOR
U	THERM	BLACK
N	THERM	BLACK
H	SIN	YELLOW
G	COS GND	BLACK
S	COS	RED
F	SIN GND	BLUE
R	REF GND	YEL/WHI
E	REF	RED/WHI
D	RES SHLD	GRN/YEL
P	GND	GRN/YEL
A	-	-
B	-	-
C	-	-
J	-	-
K	-	-
L	-	-
M	-	-
T	-	-



SCHEMATIC DRAWING FOR BRUSHLESS RESOLVER

REV	REVISION	DATE	APP'D.
1	PRELIMINARY	1/8/99	M/S

NO.	PART NUMBER	DESCRIPTION	QTY.
1	M/S	M/S Systems Corporation Automation Division	

DATE: 1/8/99
DRAWN: M/S
CHECKED: M/S
APPROVED: M/S