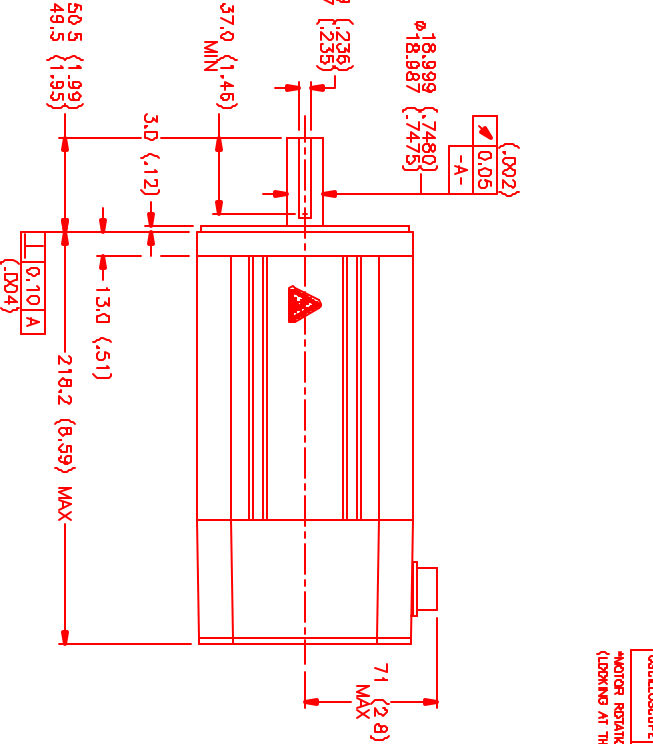
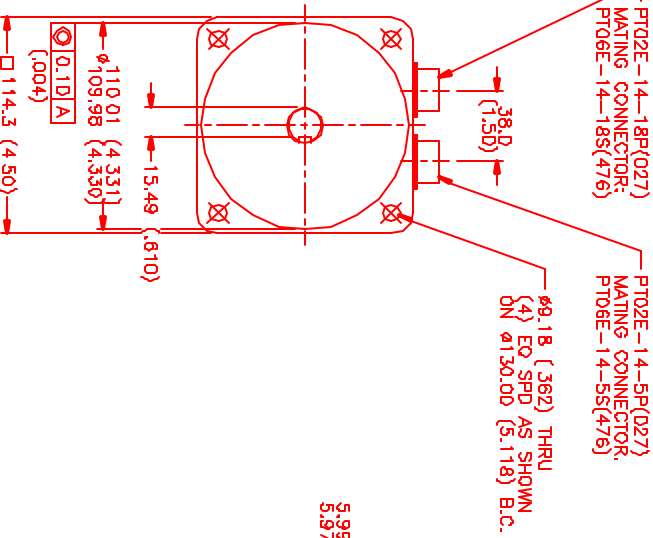


MOTOR DATA @ 230 VAC (SINE)

MOTOR PARAMETERS	UNITS	VALUE
MOTOR HORSEPOWER	HP RATED	2.1
	KW RATED	1.6
MAX. OPERATING SPEED	N MAX	4200
* CONTINUOUS RATED TORQUE @ 3000 RPM	N RATED	3000
* CONTINUOUS STALL TORQUE	IN-LBS[Nm]	45.0[5.1]
CONTINUOUS LINE CURRENT	AMPS[RMS/Φ]	54.0[6.1]
PEAK CURRENT	IN-LBS[Nm]	6.2
	AMPS[RMS/Φ]	189.0[21.4]
MAX. THEORETICAL ACCEL	RD/SEC*	21.6
TORQUE SENSITIVITY	Kt M-LB/AMPS[ΦNm/AM/Φ]	54.000
BACK EMF (LINE TO LINE)	Vrms/Krpm	8.8[.99]
D.C. RESISTANCE (P-P)	ΩHWS	±10% .85
INDUCTANCE (P-P)	MILLIHENRIES	±10% 6.1
ROTOR INERTIA	Jm	IN-LBS-SEC ² [Kg-M ²] .00351[.00039]
STATIC FRICTION	Tl	IN-LBS[Nm] 1.0[.11]

*25°C AMBIENT WITH A MAXIMUM CASE TEMPERATURE OF 100°C ON MOTOR. MOTOR MOUNTED ON A 12" X 12" X 1 1/2" ALUMINUM HEATSINK. THERMOSTAT IN STATOR WINDINGS WILL OPEN IF WINDING TEMPERATURE EXCEEDS 155°C. THIS ALLOWS FOR AN APPROXIMATE +10% HEADROOM IN THE CONTINUOUS TORQUE RATING BEFORE THERMOSTAT OPENS.

- MECHANICAL NOTES:**
1. AXIAL LOAD: 50 LBS MAX
 2. RADIAL LOAD: 100 LBS MAX @ 1" FROM FACE
 3. MOTOR SEALED TO IP65.
 4. MOTOR WEIGHT: 17.8 LBS. [8.1 Kg]
 5. MOTOR FINISH: BLACK EPOXY
 6. MOTOR OUTPUT SHAFT: STAINLESS STEEL
 7. MILLIMETERS (INCHES)



CONNECTION CHART

MOTOR CONNECTOR:
PT02E-14-5P(027)
(27.0-00026)

MOTOR WIRE LEADS	WIRE FUNCTION	WIRE COLOR
A	ΦR	RED
B	ΦS	BLACK
C	ΦT	BLUE
D	PE GND	GRN/YEL
E	-	-

ENCODER/THERM. CONNECTOR:

PT02E-14-18P(027)
(27.0-00024)

ENC/THERM WIRE LEADS	WIRE FUNCTION	WIRE COLOR
T	GROUND	BLACK
K	+5VDC	RED
B	CH A	BLUE
C	CH A\	BLUE/BLK
N	CH B	GREEN
P	CH B\	GRN/BLK
M	CH Z	YELLOW
U	CH Z\	YEL/BLK
E	CH U	BROWN
R	CH U\	BRN/BLK
F	CH V	GRAY
S	CH V\	GRAY/BLK
G	CH W	WHITE
H	CH W\	WHT/BLK
D	GND/CABLE	SHLD
A	THERM	BLACK
L	THERM	BLACK
J	GND	GRN/YEL

ΦR(RED)

ΦS(BLACK)

3 PHASE - 6 POLE

MOTOR & HALL POSITION CHART

HALL LEADS	BROWN	RED	GRAY	WHITE
MOTOR LEADS	BLACK	RED	BLUE	BLACK
VIEW ON THE OSCILOSCOPE	AAAA	AAAA	AAAA	AAAA

*MOTOR ROTATION CCR COUNTS DIRECTION(S) (LOOKING AT THE FACE OF THE MOTOR)

HAVE REPRESENTING STATOR OUTPUT WAVE REPRESENTING HALL SENSOR

REV.	DESCRIPTION	DATE	APP'D.
PRELIMINARY		3/5/01	ALS

NO.	PART NUMBER	DESCRIPTION	QTY.
1	230VAC/ME/72/CONN	230VAC/ME/72/CONN	1/2*1

INS Systems Corporation
Automation Division

DATE: 3/5/01
REV: 1/2*1
TITLE: 230VAC/ME/72/CONN