

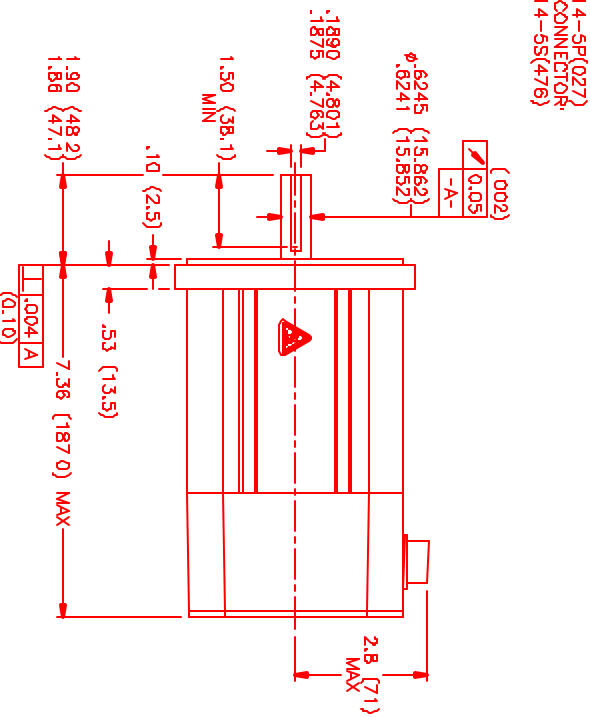
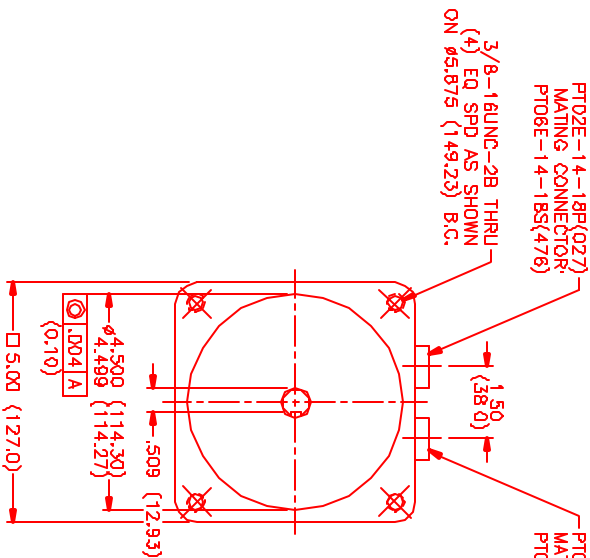
MOTOR DATA @ 230 VAC (TRAP)

MOTOR PARAMETERS	UNITS	VALUE
MOTOR HORSEPOWER	HP RATED	1.3
	KW RATED	1.0
MAX OPERATING SPEED	N MAX	3600
SPEED @ RATED TORQUE	N RATED	3000
* CONTINUOUS RATED TORQUE @ 3000 RPM	IN-LBS(Nm)	28.0(3.2)
* CONTINUOUS STALL TORQUE	IN-LBS(Nm)	38.0(4.3)
CONTINUOUS LINE CURRENT	AMPS	6.0
PEAK CURRENT	IN-LBS(Nm)	114.0(12.9)
	AMPS	18.0
MAX THEORETICAL ACCEL	RAO/SEC ²	60,000
TORQUE SENSITIVITY	Kt IN-LBS/AMP(Nm/AMP)	6.2(1.71)
BACK EMF (LINE TO LINE)	Vrms/Krpm	55.0
D.C. RESISTANCE (P-P)	OHMS	3.2
INDUCTANCE (P-P)	MILLIHENRIES	15.3
ROTOR INERTIA	gm(IN-LBS-SEC ²)(KG-M ²)	.0019(.00021)
STATIC FRICTION	gf (IN-LBS(Nm))	.8(.09)

*25°C AMBIENT WITH A MAXIMUM CASE TEMPERATURE OF 100°C ON MOTOR. MOTOR MOUNTED ON A 12" X 12" X 1 1/2" ALUMINUM HEATSINK. THERMOSTAT IN STATOR WINDINGS WILL OPEN IF WINDING TEMPERATURE EXCEEDS 155°C. THIS ALLOWS FOR AN APPROXIMATE +10% HEADROOM IN THE CONTINUOUS TORQUE RATING BEFORE THERMOSTAT OPENS.

MECHANICAL NOTES:

1. AXIAL LOAD: 50 LBS MAX
2. RADIAL LOAD: 100 LBS MAX @ 1" FROM FACE
3. MOTOR SEALED TO IP65.
4. MOTOR WEIGHT: 13.4 LBS. [6.1 kg]
5. MOTOR FINISH: BLACK EPOXY
6. MOTOR OUTPUT SHAFT: STAINLESS STEEL
7. INCHES (MILLIMETERS)



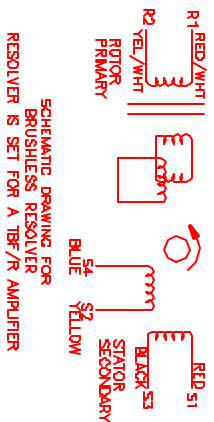
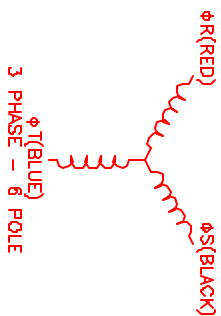
CONNECTION CHART
MOTOR CONNECTOR:
PTO2E-14-5P(027)
(270-00026)

MOTOR WIRE LEADS	WIRE COLOR
A	RED
B	BLACK
C	BLUE
D	GRN/YEL
E	-

RESOLVER/THERM CONNECTOR:
PTO2E-14-18P(027)
(270-00024)

MOTOR WIRE LEADS	RES/THERM WIRE LEADS
A	RES GND
B	RES GND
C	RES GND
D	RES SHLD
E	RES SHLD
F	SIN GND
G	COS
H	COS GND
I	RED
J	RED
K	RED
L	RED
M	RED
N	RED
O	RED
P	RED
Q	RED
R	RED
S	RED
T	RED

REV	REVISIONS	DATE	APPR
1	REVISION	4/10/02	LIN
PREL	MINIART		



NO.	PART NUMBER	DESCRIPTION	QTY.
1	M1140ATG6B11N	M1140ATG6B11N	1

REV	DATE	BY	CHKD
1	4/10/02	WJW	WJW

MKS Systems Corporation
Automation Division
14001 140th Avenue, Suite 100
Chaska, MN 55318
Tel: 763-252-2000
Fax: 763-252-2001
www.mksinc.com